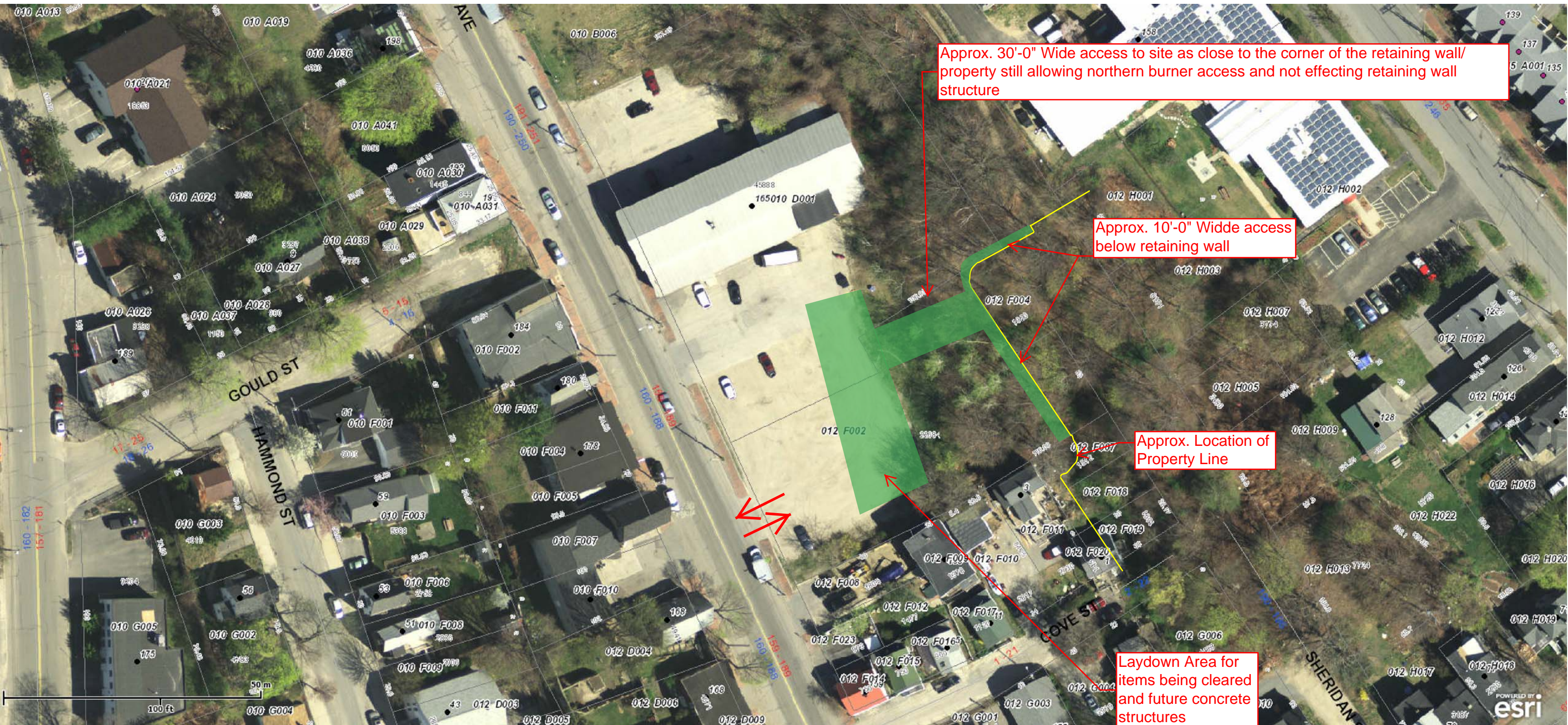


Munjoy Heights Site Access



Copyright 2011 Esri. All rights reserved. Mon Mar 3 2014 07:15:25 AM.

- Notes:**
1. Duration: Approx. 2-3 months from start of project. Once retaining wall is built access is closed off from the site.
 2. Access in and out of site will be limited to initial equipment mobilization, 2-4 trucks of logs being removed from the site, and a few dump truck loads of grubbing materials
 3. Access in and out of the lot can be monitored by a flagger if requested.