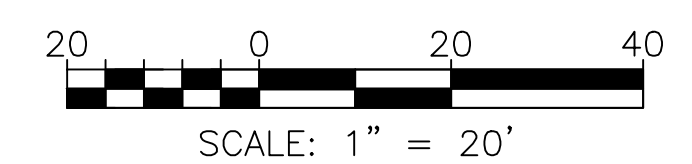
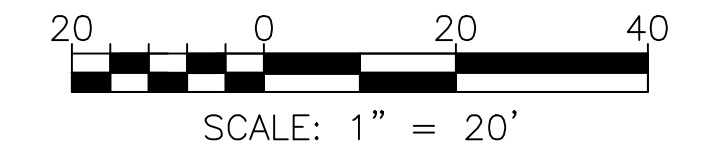
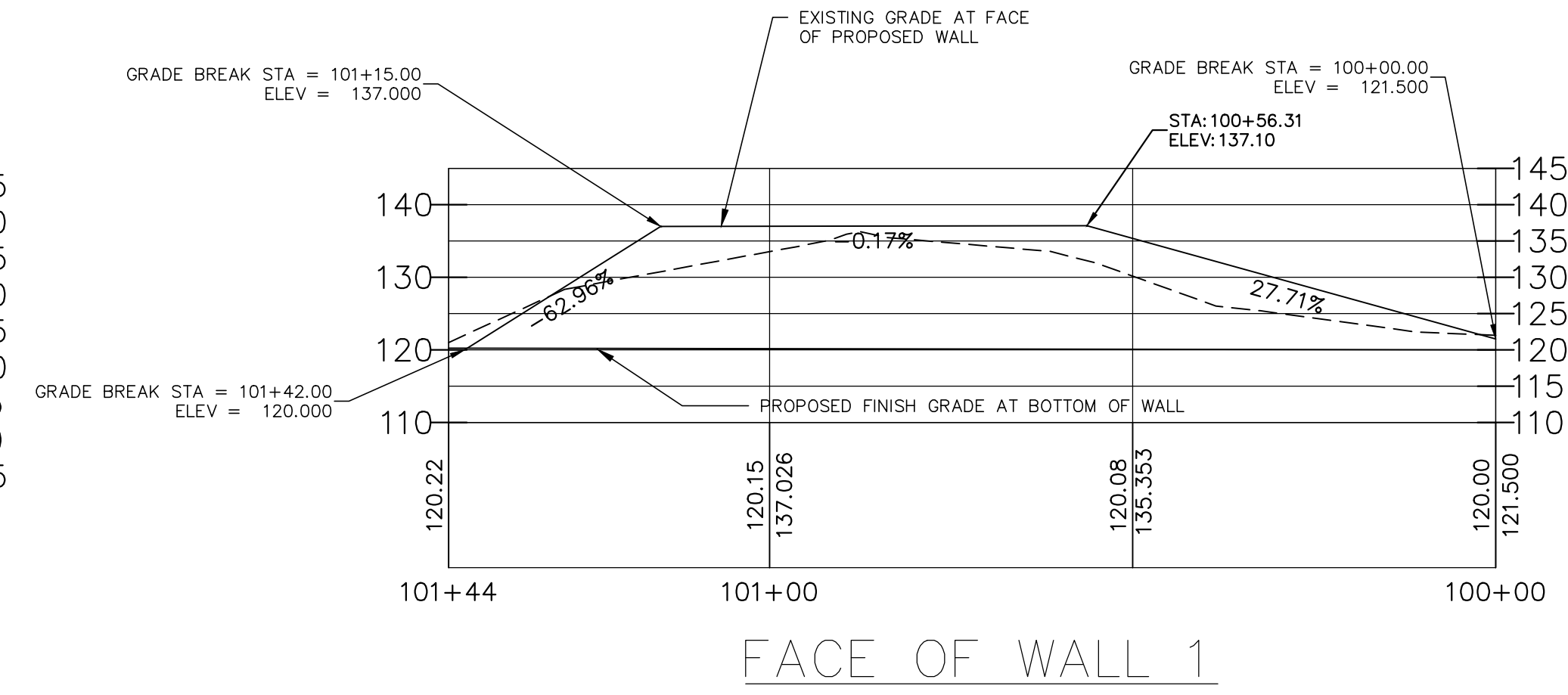
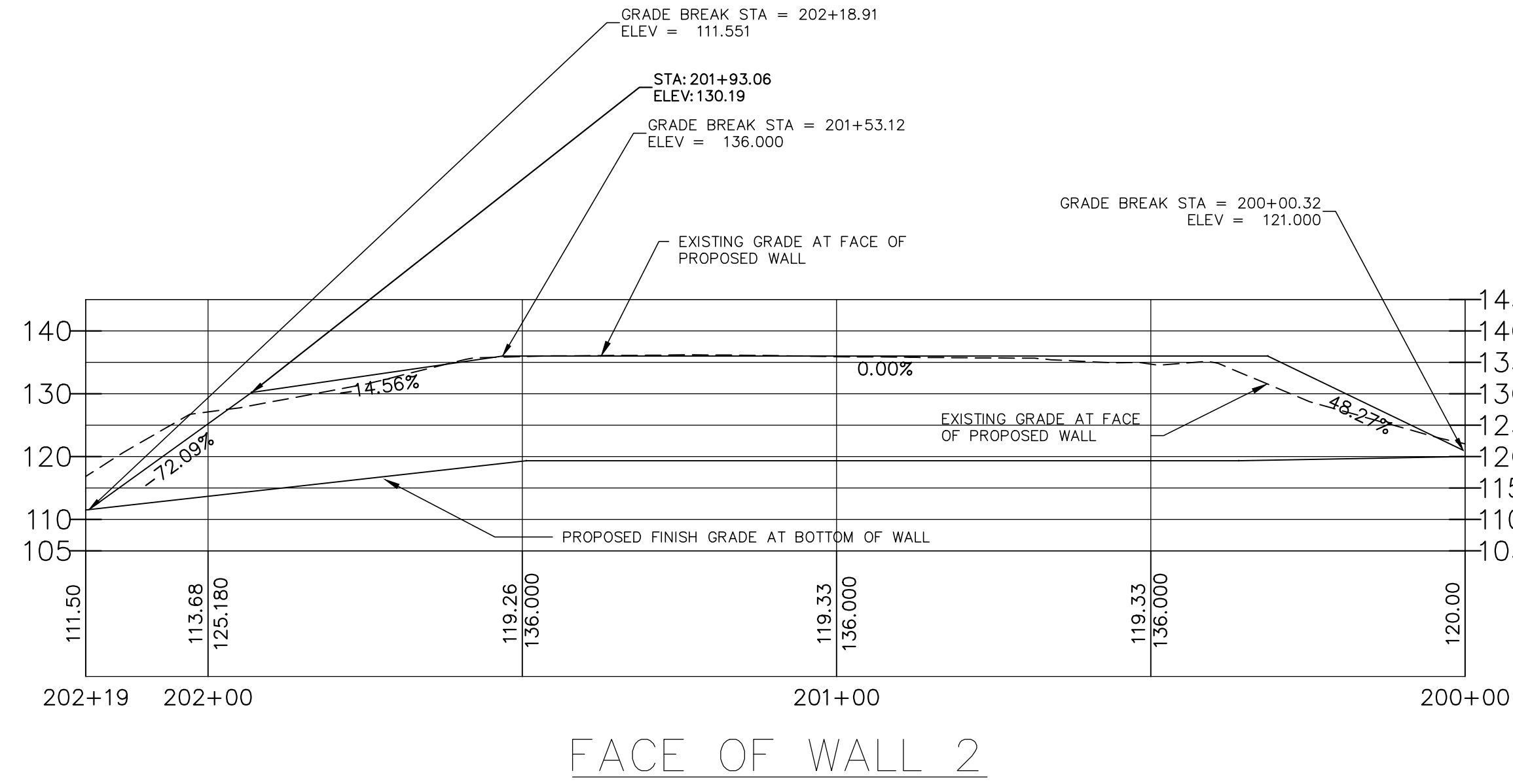


NOTES:  
 1. SUMMIT GEOENGINEERING SERVICES IN COORDINATION WITH STRUCTURAL INTEGRITY CONSULTING ENGINEERS, INC. SHALL PROVIDE THE RETAINING WALL DESIGN, GLOBAL STABILITY ANALYSIS, AND THE DESIGN OF THE TEMPORARY SOIL RESTRAINT MEASURES, AS REQUIRED.



WORKSHOP SUBMISSION  
 75% LEVEL DRAWINGS  
 NOT FOR CONSTRUCTION

ISSUED FOR	BY
CITY SUBMISSION	WHS
WORKSHOP #2	9/23/13
	11/7/13
REVISION	REV. DATE
DRAWING NAME:	WALL 1 & 2 PROFILE PLAN
PROJECT NAME:	MUNJOY HEIGHTS
CLIENT:	REDFERN PROPERTIES, LLC
	P.O. BOX 8816, PORTLAND, MAINE 04104
FILE:	1047_CIVIL
DATE:	9/23/13
JN:	1047
SCALE:	1"=20'
DESIGN BY:	WHS
DRAWN BY:	ZRJ
CHECKED BY:	WHS
DRAWING NO.	C-32