

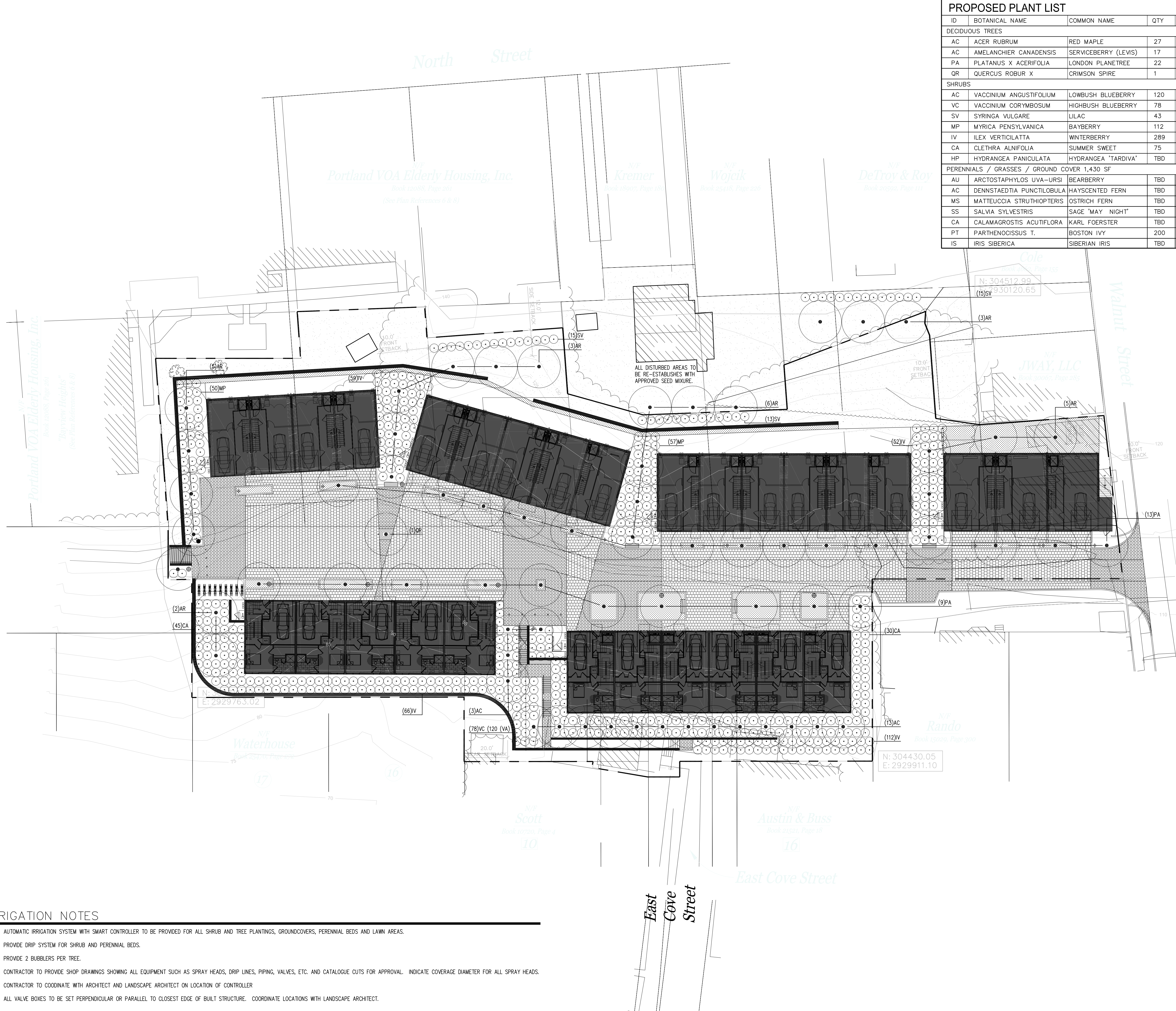
| ID  | BOTANICAL NAME            | COMMON NAME          | QTY | SIZE    |
|---|---------------------------|----------------------|-----|---------|
| <b>PROPOSED PLANT LIST</b>                          |                           |                      |     |         |
| <b>DECIDUOUS TREES</b>                              |                           |                      |     |         |
| AC  | ACER RUBRUM               | RED MAPLE            | 27  | 8"-10'  |
| AC  | AMELANCHIER CANADENSIS    | SERVICEBERRY (LEVIS) | 17  | 8'      |
| PA  | PLATANUS X ACERIFOLIA     | LONDON PLANETREE     | 22  | 12"-14' |
| QR  | QUERCUS ROBUR X           | CRIMSON SPIRE        | 1   | TBD     |
| <b>SHRUBS</b>                                       |                           |                      |     |         |
| AC  | VACCINIUM ANGUSTIFOLIUM   | LOWBUSH BLUEBERRY    | 120 | 2 GAL.  |
| VC  | VACCINIUM CORYMBOSUM      | HIGHBUSH BLUEBERRY   | 78  | 5 GAL.  |
| SV  | SYRINGA VULGARE           | LILAC                | 43  | 5 GAL.  |
| MP  | MYRICA PENNSYLVANICA      | BAYBERRY             | 112 | 5 GAL.  |
| IV  | ILEX VERTICILLATA         | WINTERBERRY          | 289 | 5 GAL.  |
| CA  | CLETHRA ALNIFOLIA         | SUMMER SWEET         | 75  | 2 GAL.  |
| HP  | HYDRANGEA PANICULATA      | HYDRANGEA 'TARDIVA'  | TBD | 5 GAL.  |
| <b>PERENNIALS / GRASSES / GROUND COVER 1,430 SF</b> |                           |                      |     |         |
| AU  | ARCTOSTAPHYLOS UVA-URSI   | BEARBERRY            | TBD | 1 GAL.  |
| AC  | DENNSTAEDIA PUNCTILOBULA  | HAYSCENTED FERN      | TBD | 4" POT  |
| MS  | MATTEUCCIA STRUTHIOPTERIS | OSTRICH FERN         | TBD | 1 GAL.  |
| SS  | SALVIA SYLVESTRIS         | SAGE 'MAY NIGHT'     | TBD | 1 GAL.  |
| CA  | CALAMAGROSTIS ACUTIFLORA  | KARL FOERSTER        | TBD | 1 GAL.  |
| PT  | PARTHENOCISSUS T.         | BOSTON IVY           | 200 | 4" POT  |
| IS  | IRIS SIBERICA             | SIBERIAN IRIS        | TBD | 1 GAL.  |

**SYMBOLS LEGEND**

- Proposed Shrub (Detail 2, L3.0)
- Proposed Street Tree (Detail 3, L3.0)
- Native Seed Mix
- Perennial Plantings (Detail 1, L3.0)
- Unit Paving (A)
- Unit Paving (B)
- Bench
- Steps
- Bicycle Parking
- Bollard Light (BEGA 8500LED)
- Pole Light (BEGA 8977LED)
- Stainless Steel Bollard

- PLANTING NOTES**
- All plant selection and installation will be in compliance with the City of Portland Technical Manual (Section 4).
  - No planting will be installed until all grading and construction has been completed in immediate area.
  - Contractor to verify all utilities on property and to protect all utilities during excavation for plants.
  - If there is a discrepancy between the number of plants shown on the plan and the number of plants shown in plant list, the number of plants shown on plan will take precedence.
  - All container material to be grown in container a minimum of 6 months.
  - All material shall comply with the latest edition of the American Standard for Nursery Stock, American Association of Nurseryman.
  - Contractor shall repair all damage to property from planting operations at no cost to the owner.
  - Contractor shall guarantee new plant material through one calendar year from time of provisional acceptance.
  - The Landscape Architect will tag all plants at the nursery and inspect them after delivery to the site. All plant materials shall be inspected by the Landscape Architect on site prior to installation.
  - All proposed plants shall be located carefully as shown on the plans and the placements shall be approved by Landscape Architect before the plants are installed.
  - All disturbed areas not to be paved or planted shall be loamed and seeded as shown. The seed mix specifications are as follows: LESCO Fine Fescue Links Blend of 35% hard fescue, 35% creeping red fescue, 20% chewings fescue and 10% sheep fescue. Add 5% Little Bluestem and 5% Northeast Wildflower seed mixture by weight to the Links Blend.
  - Staking and guying shall be determined by the Landscape Architect on a tree by tree basis. For pricing purposes, provide a per tree unit cost for staking and guying. If staking and guying is required, remove tree wrap, stakes, and guy wires at end of first growing season.
  - For tree planting in lawn areas, any disturbed lawn shall be loamed and seeded as necessary.
  - Landscape Architect to flag trees to be protected on site.

- IRRIGATION NOTES**
- AUTOMATIC IRRIGATION SYSTEM WITH SMART CONTROLLER TO BE PROVIDED FOR ALL SHRUB AND TREE PLANTINGS, GROUNDCOVERS, PERENNIAL BEDS AND LAWN AREAS.
  - PROVIDE DRIP SYSTEM FOR SHRUB AND PERENNIAL BEDS.
  - PROVIDE 2 BUBBLERS PER TREE.
  - CONTRACTOR TO PROVIDE SHOP DRAWINGS SHOWING ALL EQUIPMENT SUCH AS SPRAY HEADS, DRIP LINES, PIPING, VALVES, ETC. AND CATALOGUE CUTS FOR APPROVAL. INDICATE COVERAGE DIAMETER FOR ALL SPRAY HEADS.
  - CONTRACTOR TO COORDINATE WITH ARCHITECT AND LANDSCAPE ARCHITECT ON LOCATION OF CONTROLLER
  - ALL VALVE BOXES TO BE SET PERPENDICULAR OR PARALLEL TO CLOSEST EDGE OF BUILT STRUCTURE. COORDINATE LOCATIONS WITH LANDSCAPE ARCHITECT.



**Munjoy Heights**  
 Walnut Street  
 Portland Maine

**100% PLANNING BOARD SUBMITTAL NOT FOR CONSTRUCTION**

Revision \_\_\_\_\_ Date: \_\_\_\_\_

revisions:  
 date: November 15, 2013  
 scale: As Noted  
 drawn: SD  
 checked: SD

**L2.0**  
 PLANTING PLAN

