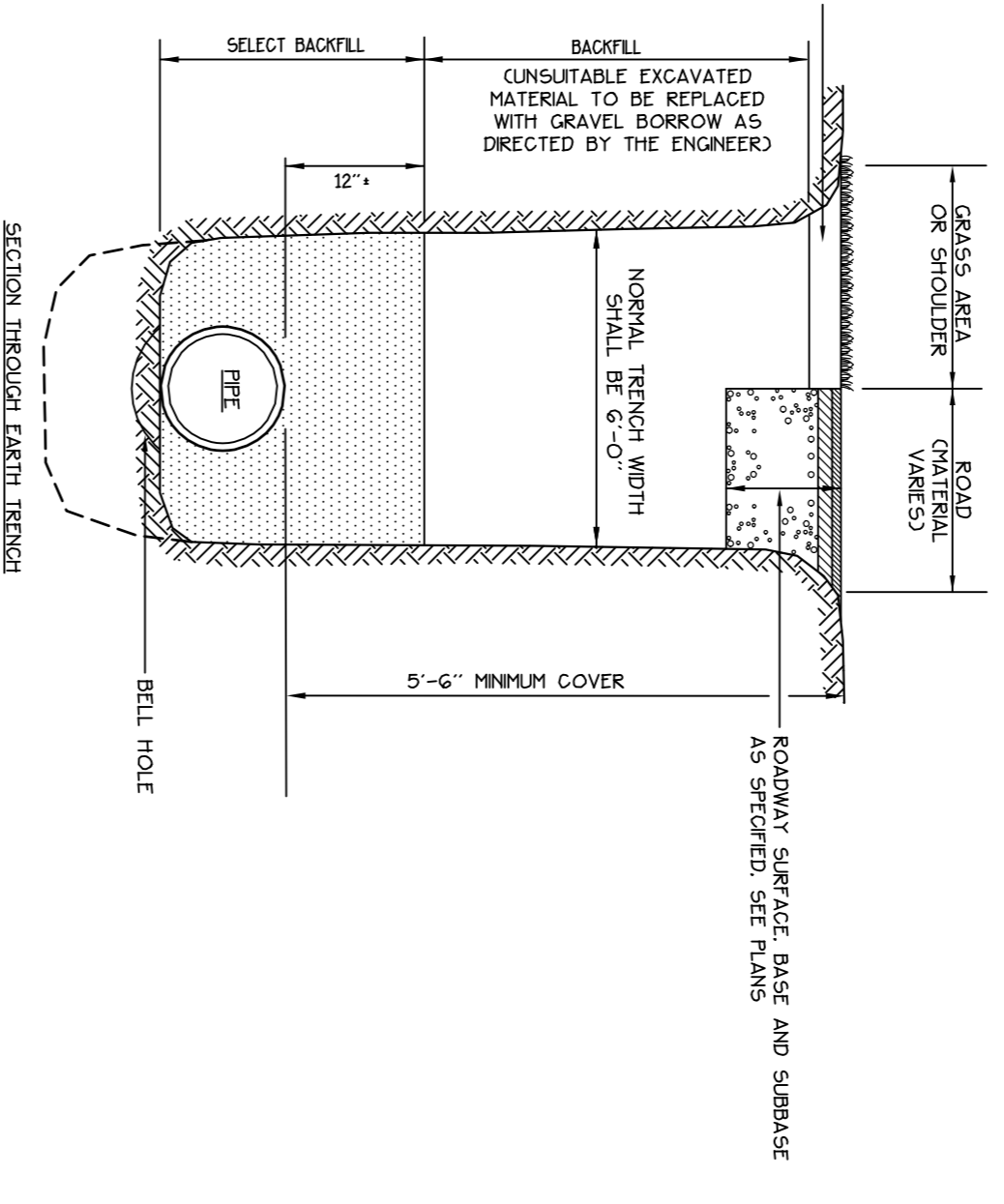
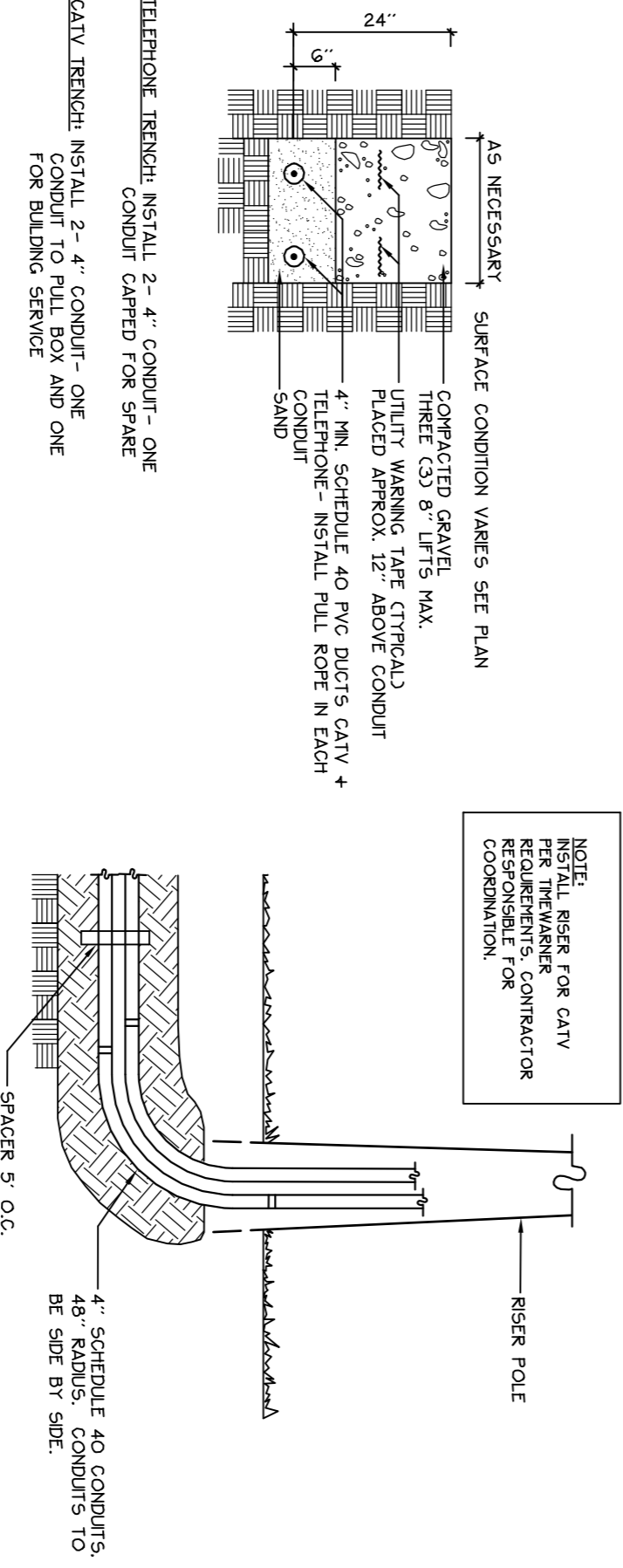


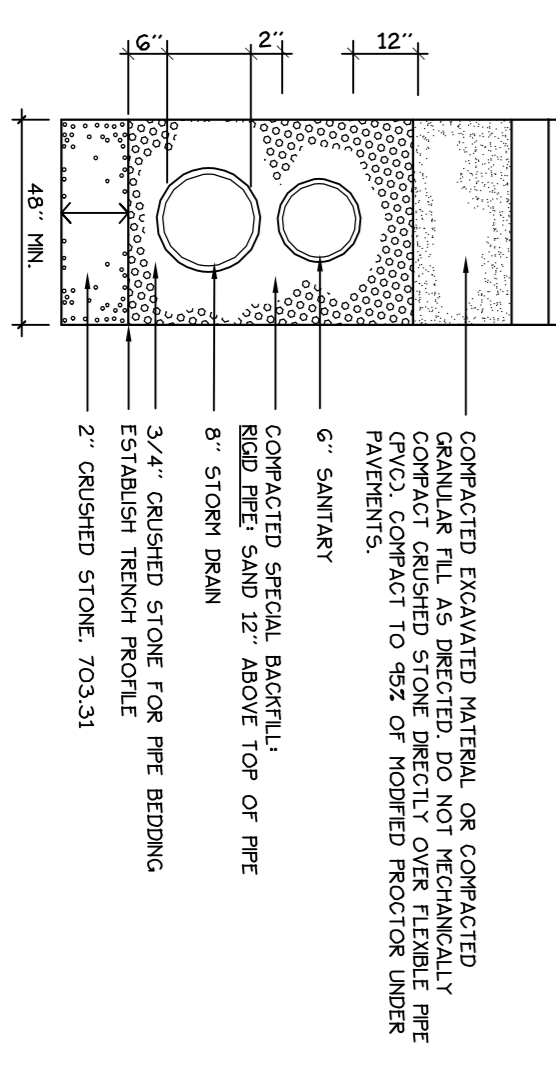
1 CONCRETE SEGMENTAL RETAINING WALL
NOT TO SCALE



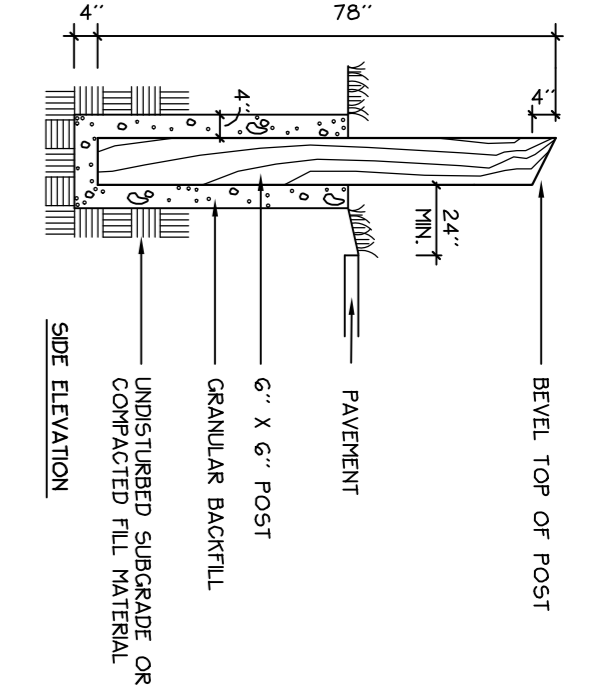
2 PORTLAND WATER DISTRICT PIPE TRENCH DETAIL
NOT TO SCALE



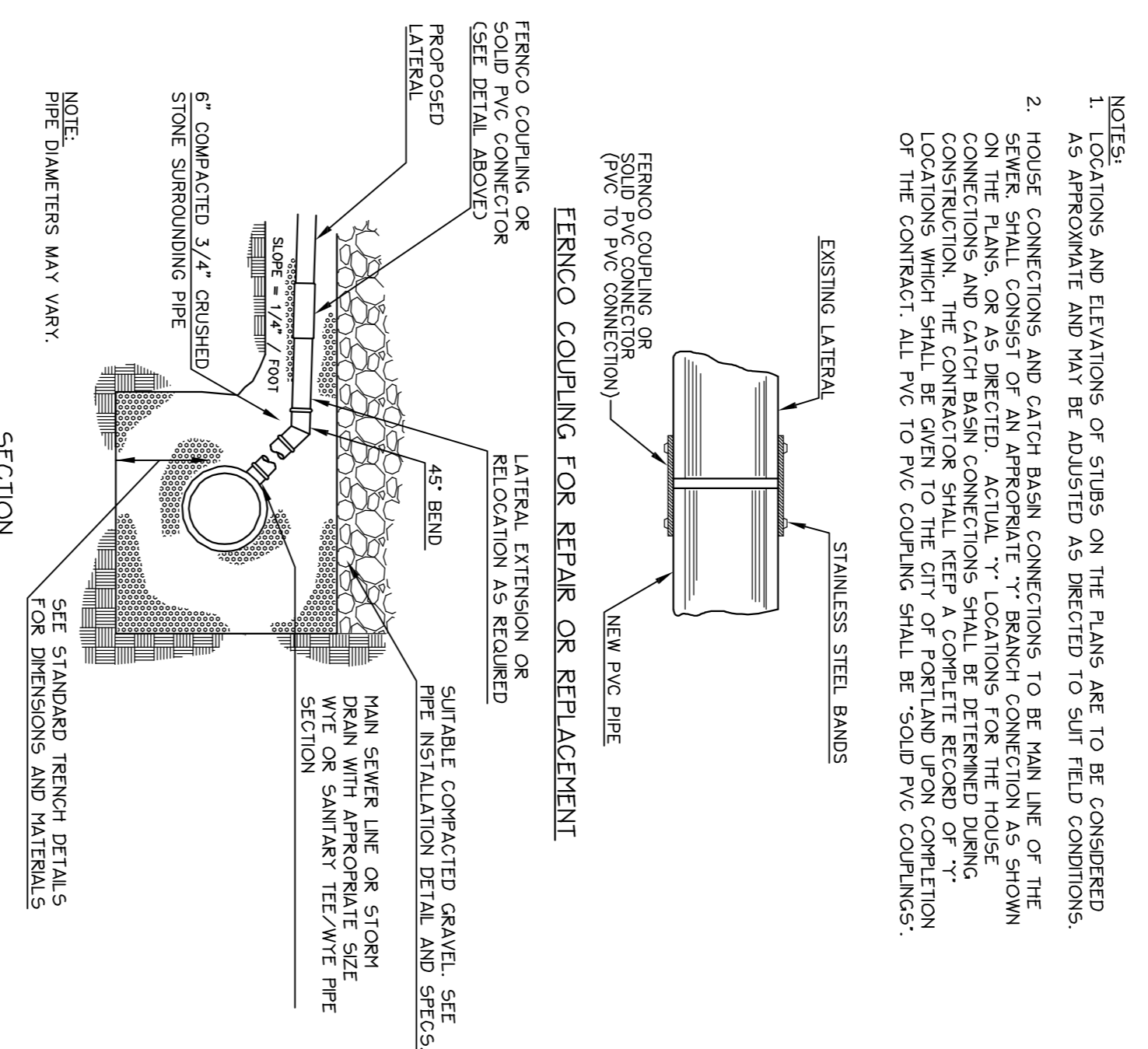
3 TELEPHONE / CABLE T.V. TRENCH
NOT TO SCALE



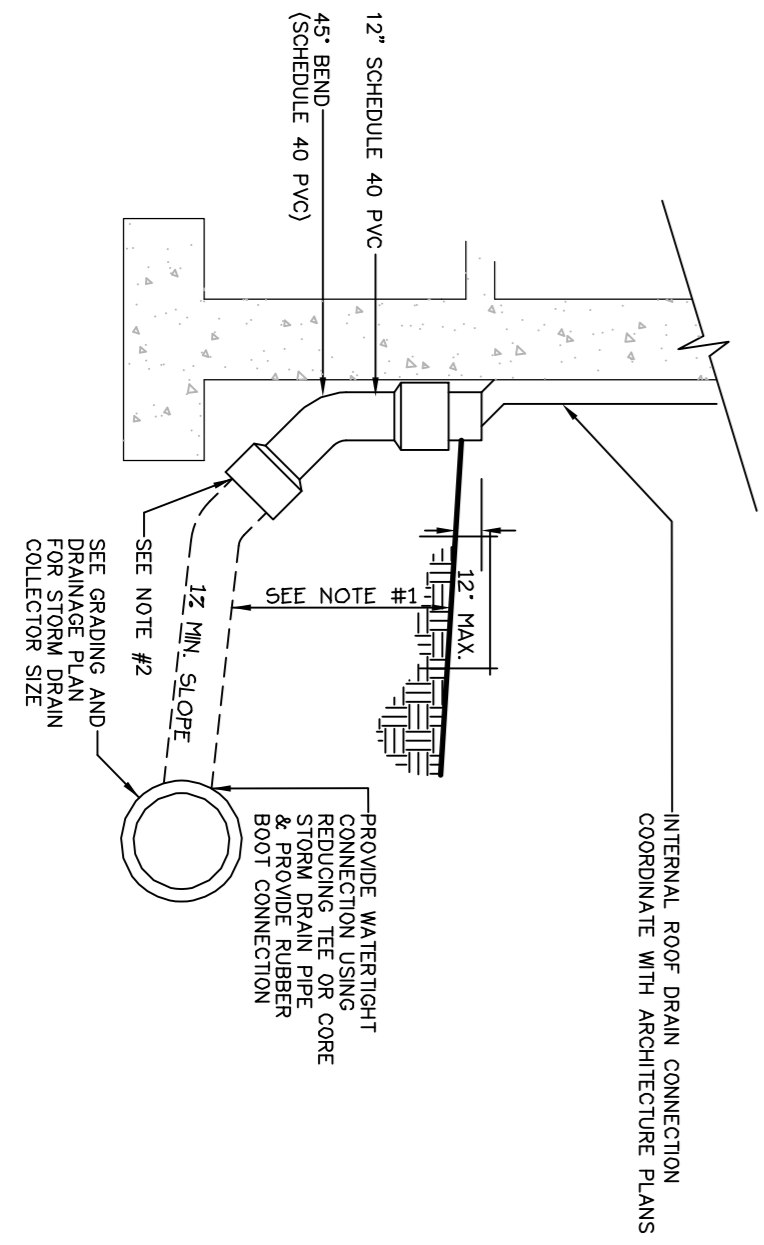
4 STACKED PIPE TRENCH DETAIL
NOT TO SCALE



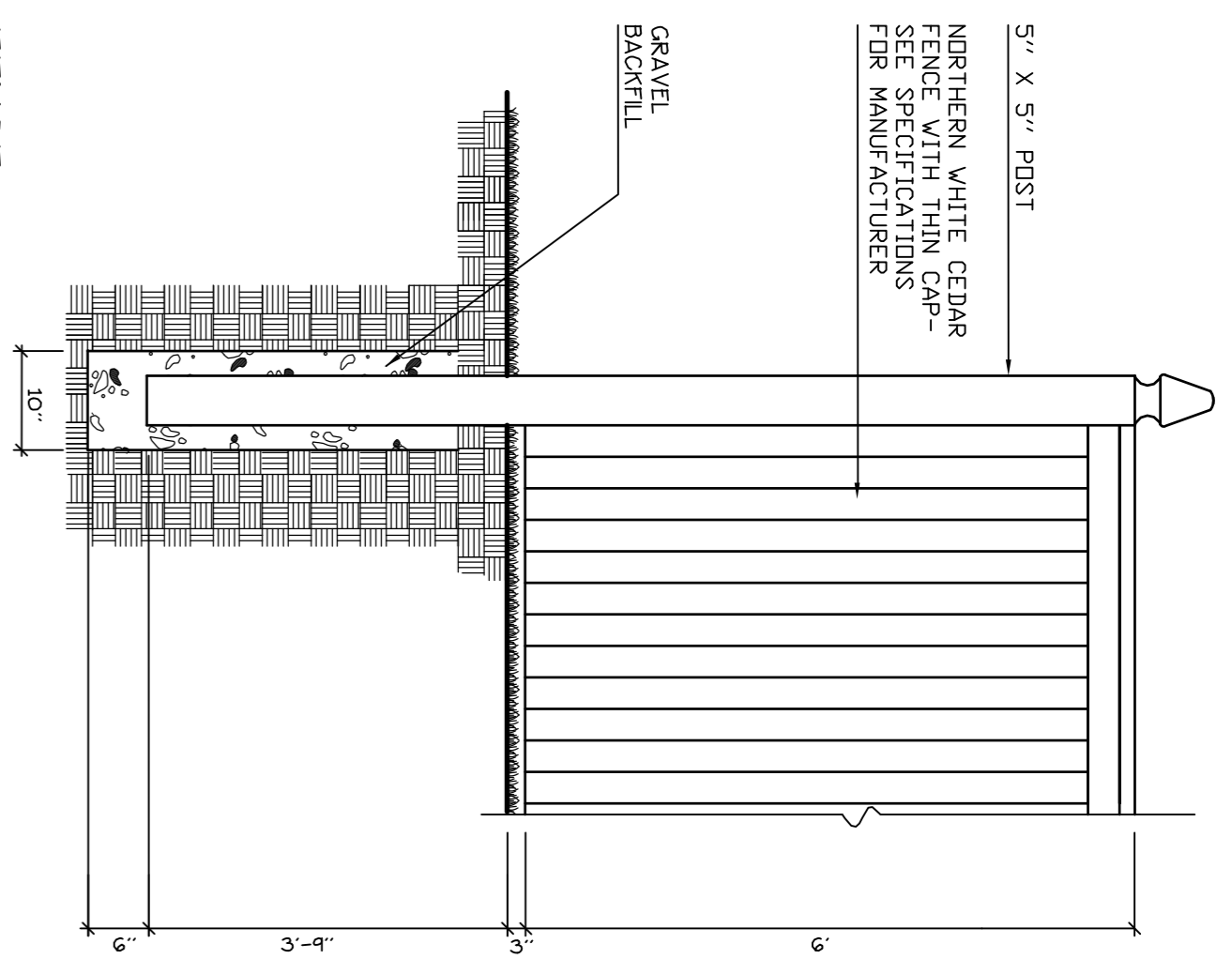
5 WOOD BOLLARD
NOT TO SCALE



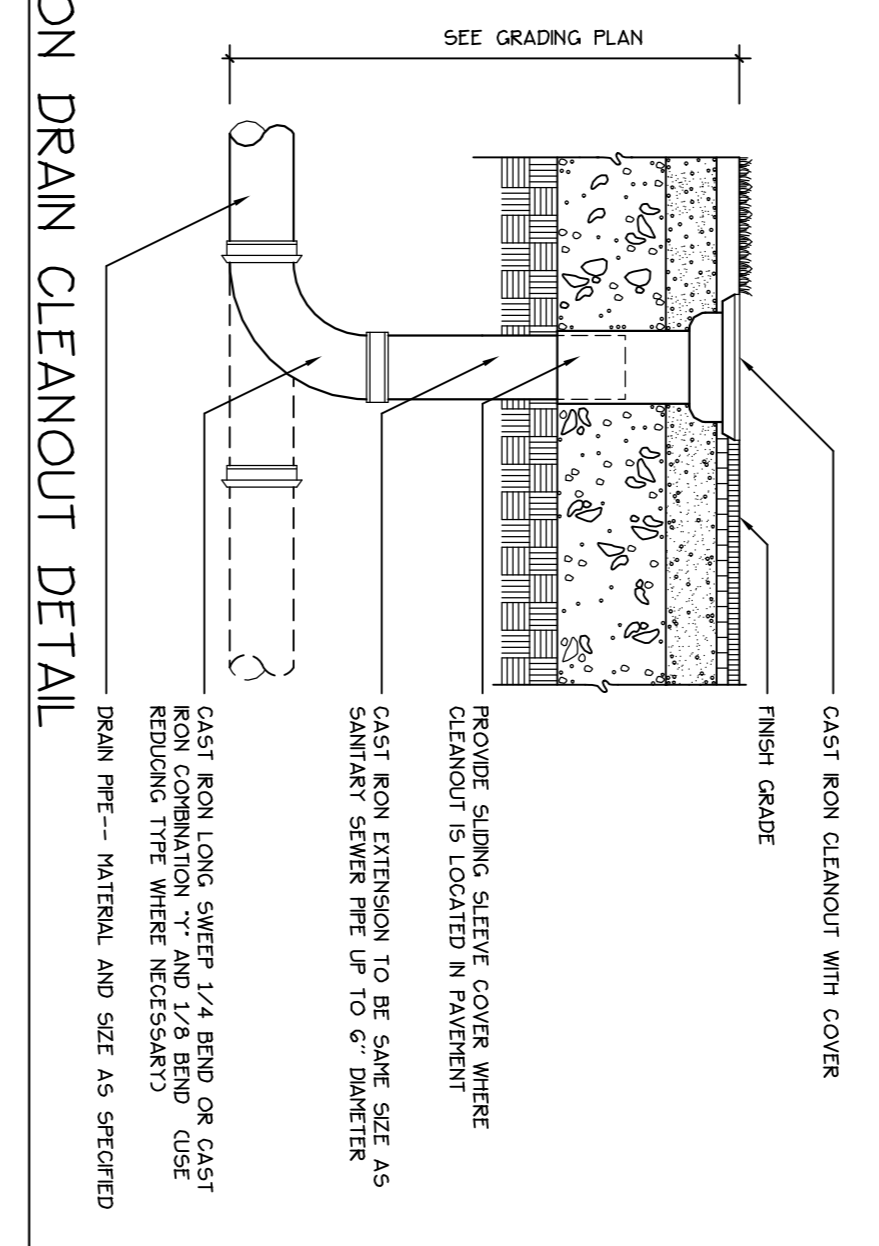
6 TYPICAL LATERAL WYE CONNECTION DETAIL
NOT TO SCALE



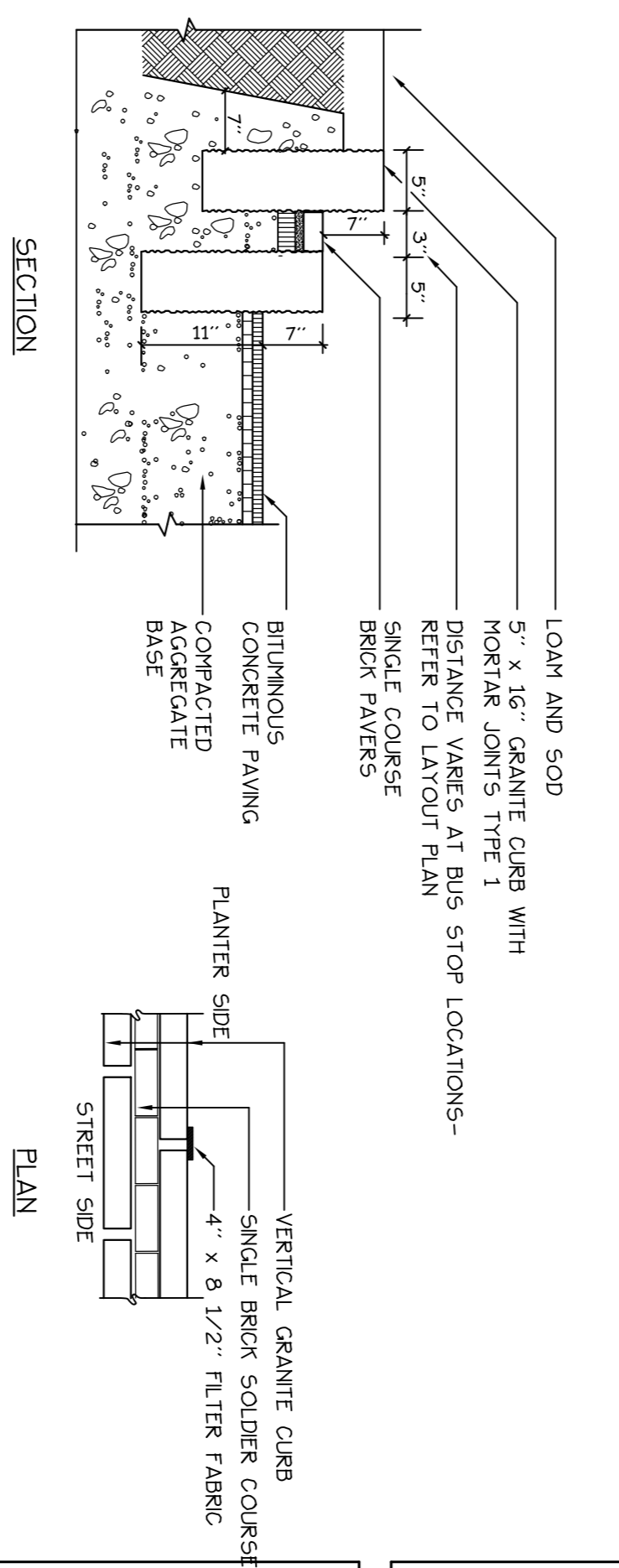
7 ROOF DRAIN DETAIL
NOT TO SCALE



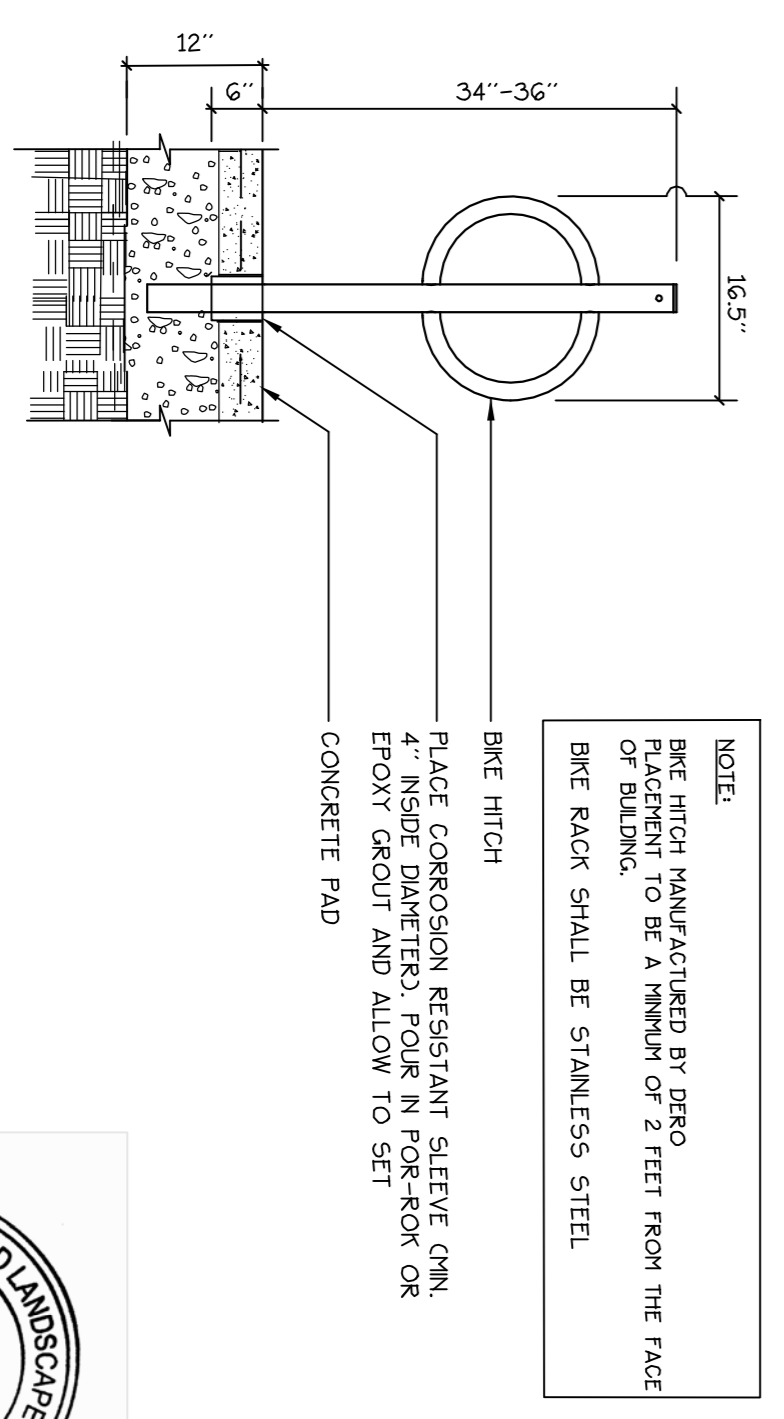
8 SOLID WOOD FENCE
NOT TO SCALE



9 FOUNDATION DRAIN CLEANOUT DETAIL
NOT TO SCALE



10 VERTICAL GRANITE CURB TREE PLANTER
NOT TO SCALE



11 EXTERIOR BIKE HITCH DETAIL
NOT TO SCALE

Prepared For:
AVESTA HOUSING
307 Cumberland Avenue
Portland, Maine
04101
AVESTA HOUSING
70 Center Street
Portland, Maine 04101
(603) 774-4427

Prepared By:
MITCHELL & ASSOCIATES
1000 State Street
Portland, Maine 04101
(603) 774-4427

CITY OF PORTLAND
APPROVED SITE PLAN
Subject to Conditions of Approval
and Standard Conditions

WASHINGTON AVENUE EFFICIENCIES
134 Washington Avenue
Portland, Maine

Date: APRIL 14, 2014

Issued For: SITE PLAN AND SUBDIVISION PLAN REVIEW

Revisions:

Scale: AS NOTED

Sheet No.: 6

