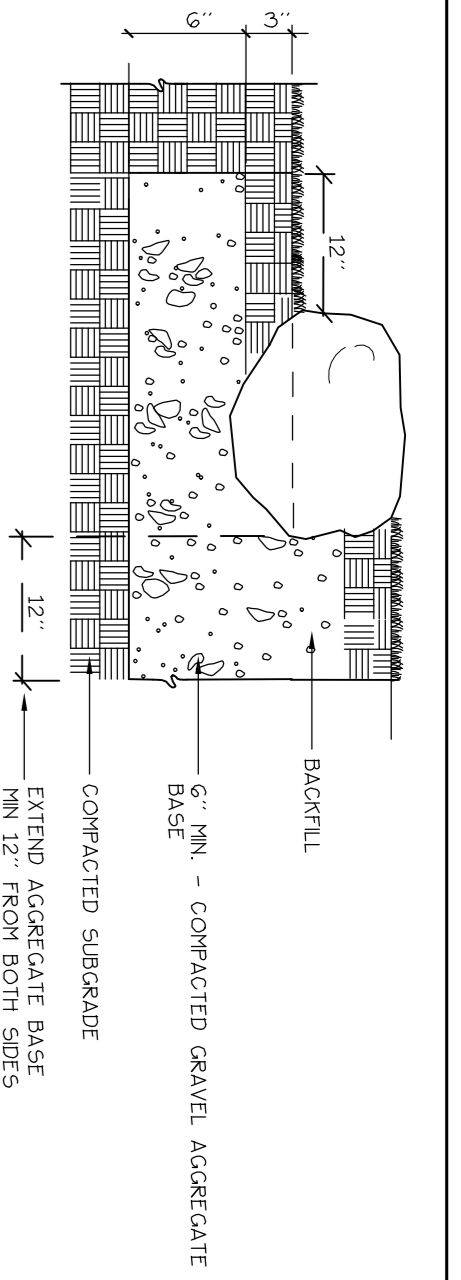
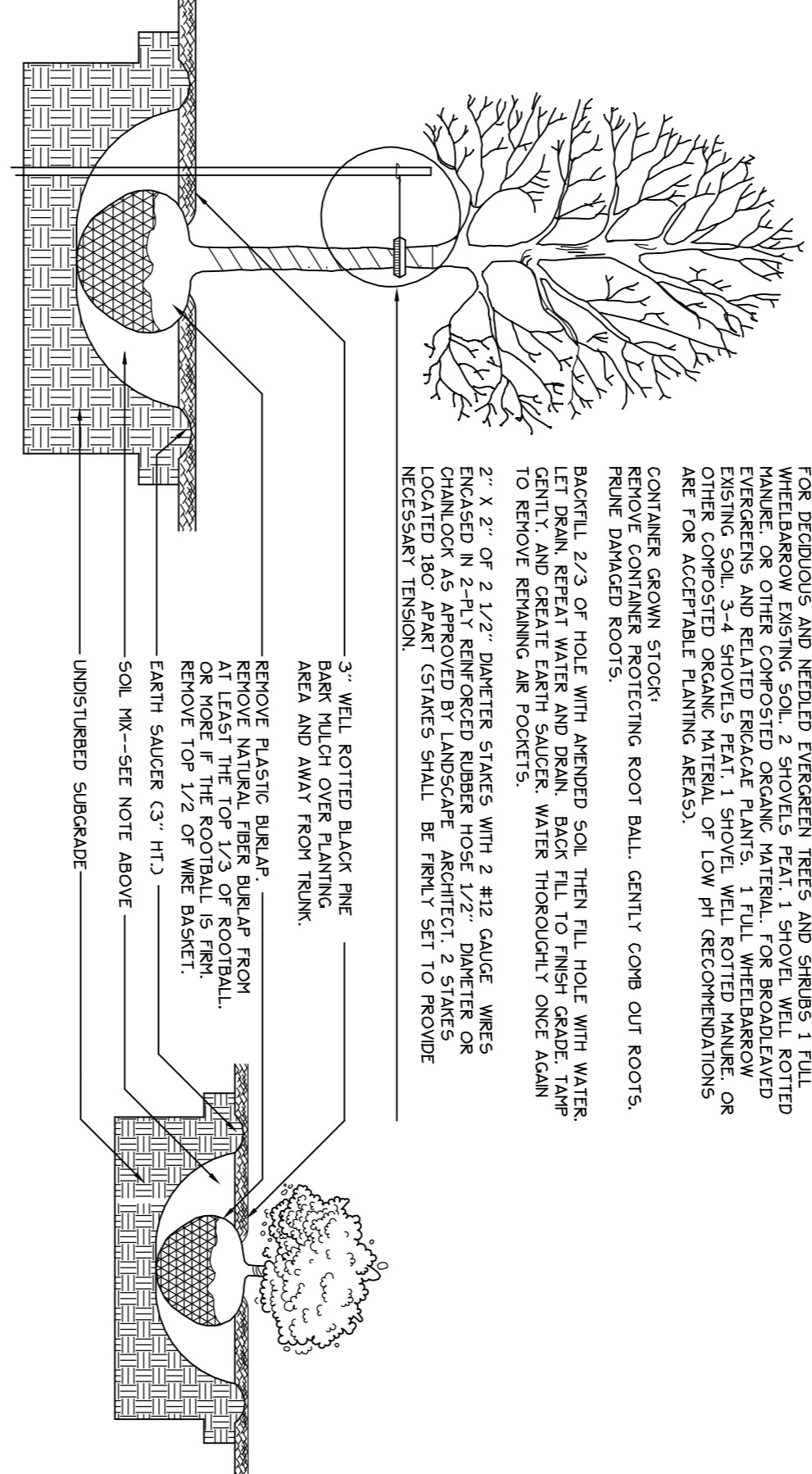


KEY	QTY	BOTANICAL NAME	COMMON NAME	SIZE
TREES				
A. KOR	1	ABIES KOREANA	KOREAN FIR	5'-6" HT
C. OCC	3	CETUS OCCIDENTALIS	GOLDEN SHADOWS DOGWOOD	2'-7" CAL
C. AWS	1	CORNUS ALTERNIFOLIA 'W. STAGYRAN'	BLUE POINT JUNIFER	#10
J. BP	4	JUNIPERUS BLUE POINT CHINENSIS	CRABAPPLE	2" CAL
M. DW	1	MALUS DONALD WYMAN'		
SHRUBS				
C. ALN	1	CLETHRA ALNIFOLIA 'RUBY SPICE'	RUBY SPICE SUMMERSWEET	#3
C. SAF	2	CORNUS SERICEA 'ARCTIC FIRE'	RED TWIG DOGWOOD	#3
D. BUR	6	DAPHNE BURWOODII 'CAROL MAKER'	CAROL MACNE DAPHNE	#3
E. EG	2	EMERALD N' GOLD EUONYMUS	EMERALD N' GOLD EUONYMUS	#3
F. MAJ	3	FOTHERGILLA MAJOR 'RED LOORCE'	BOTTLEBRUSH BUSH	#3
I. VRS	1	ILEX VERTICILLATA 'RED SPIRIT'	RED SPIRIT FORMAL WINTERBERRY	#3
L. VLD	2	LEUK VERTICILLATA 'JIM DANDY'	JIM DANDY MALED WINTERBERRY	#3
R. ARO	22	RHUS AROMATICA '10-0-0'	LOW-GRO AROMATIC SUMAC	#3
R. NZ	3	RHOODENDRON NOVA ZEMBLA	RHOODENDRON	#3
V. COR	5	VACCINIUM GORZYBOSUM	BLUE CROPP + BLUE RAY HIGHBUSH	#3
PERENNIALS				
A. FF	16	ATHYRIUM FILIX-FEMINA 'LADY IN RED'	LADY IN RED FERN	#3
H. LIB	6	HOSTIA LIBERTY'	LIBERTY HOSTIA	POT
H. SG	6	HOSTIA STAINED GLASS'	STAINED GLASS YELLOW HOSTIA	POT
M. STR	18	MATTEUCCIA STRUTHIOIDES	OSTRICH FERN	POT
F. ALH	3	FENNELTUM ALPICOLOIDES 'HAMELIN'	HAMELIN FOUNTAIN GRASS	POT
VINES				
A. KOL	2	ACINDIA KOLOKHTA 'ARCTIC BEAUTY'	ARCTIC BEAUTY KIVI	#2
A. QUI	1	AREBA QUNATA	FIVE LEAF ARKEDIA	#2
C. PAN	1	CLEMATIS PANICULATA	VASE VINE CLEMATIS	#2

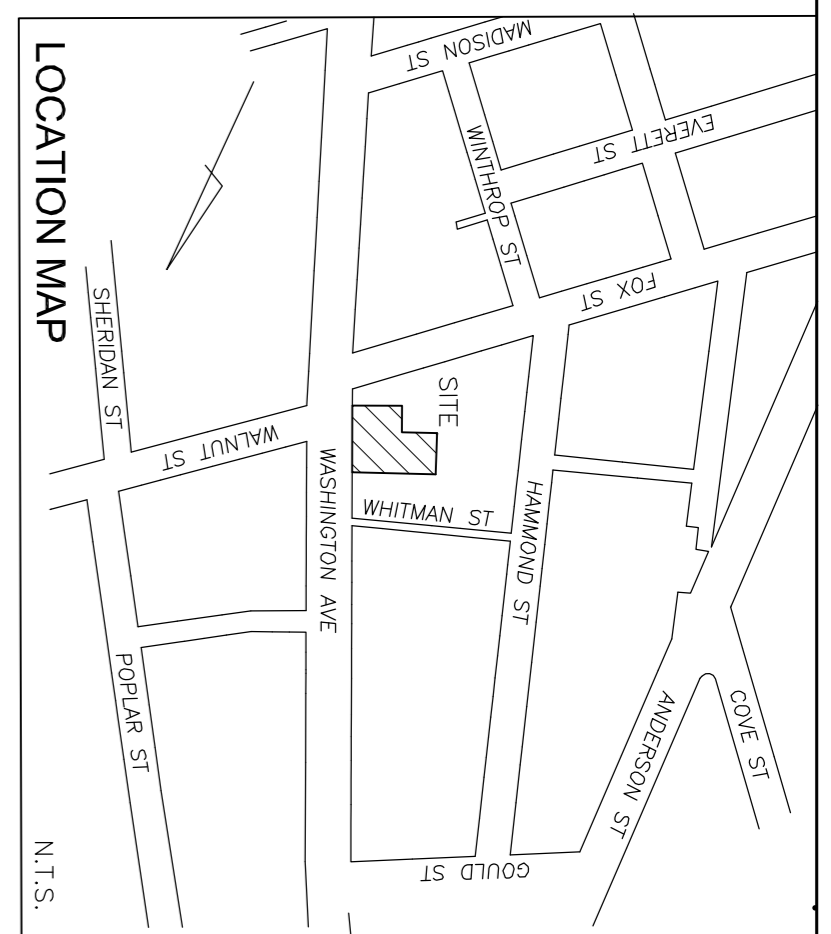
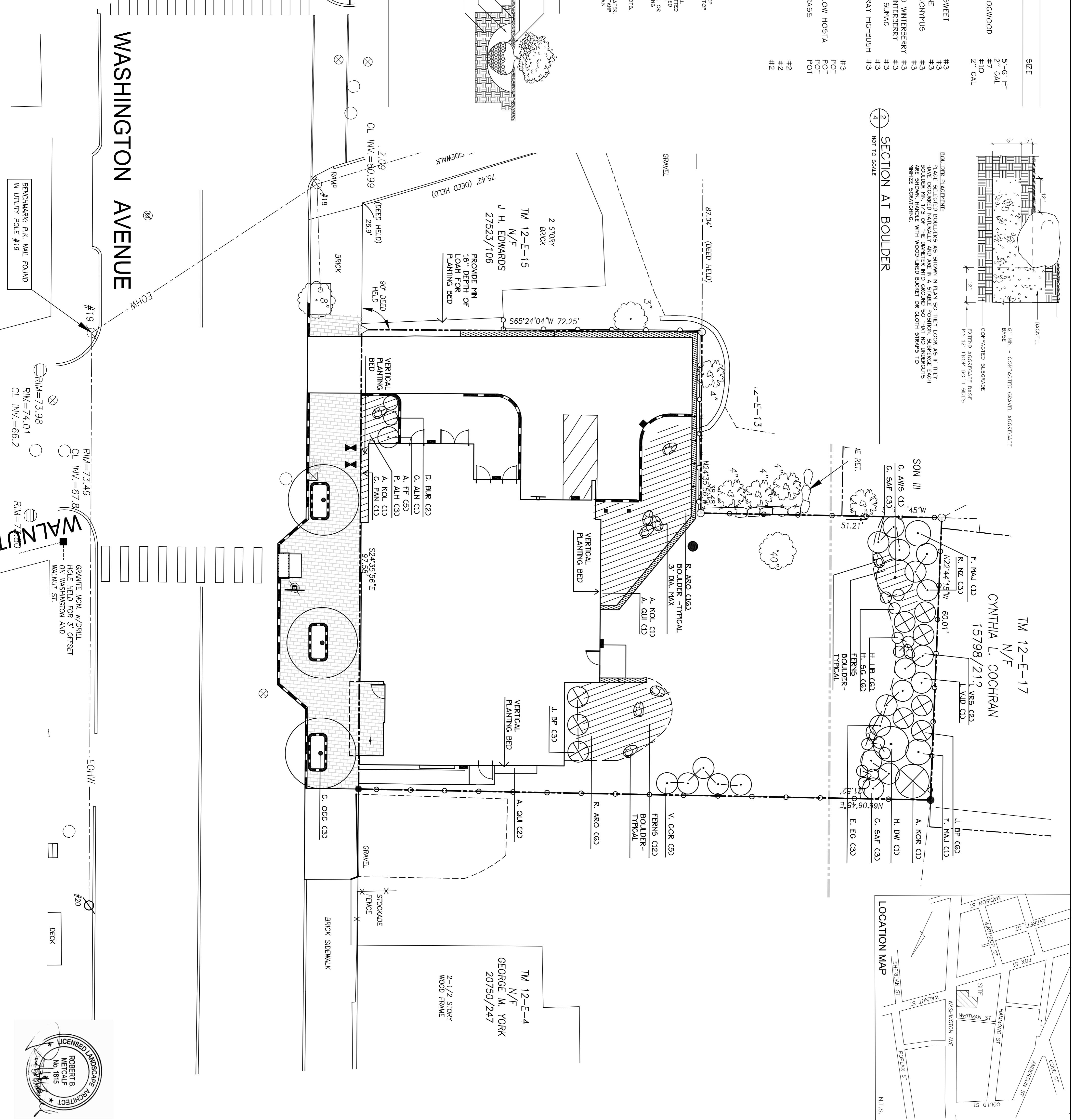


SECTION AT BOULDER
NOT TO SCALE



TREE AND SHRUB INSTALLATION
NOT TO SCALE

LEGEND	EXISTING	PROPOSED
PROPERTY LINE	---	---
IRON PIPE/PLC NAIL	○ IRP/PLC	●
GRANITE MONUMENT	□	□
CATCHBASIN	▭	▭
MANHOLE	○	○
HYDRANT	◇	◇
UTILITY POLE	⊕	⊕
FENCE	—	—
DEC. TREE	⊗	⊗
EVERGREEN TREE	⊙	⊙
LIGHT POLE	⊙	⊙
CURB	—	—
OVERHEAD WIRES	—	—
WALL MOUNTED LIGHT	—	—
SOIL BORINGS	⊕	⊕
SIGN	—	—



Prepared For:
APYSTA, Washington Ave.
 307 Cumberland Avenue
 Portland, Maine
AVESTA
 Prepared By:
MITCHELL & ASSOCIATES
 Landscape Architects
 70 Center Street
 Portland, Maine 04101
 (207) 774-4427

WASHINGTON AVENUE EFFICIENCIES
 134 Washington Avenue
 Portland, Maine

Date: APRIL 14, 2014
 Issued For: SITE PLAN AND SUBDIVISION PLAN REVIEW
 Revisions: May 27, 2014
 Title: PLANTING PLAN
 Scale: 1"=10'
 North:
 Sheet No: **4**

