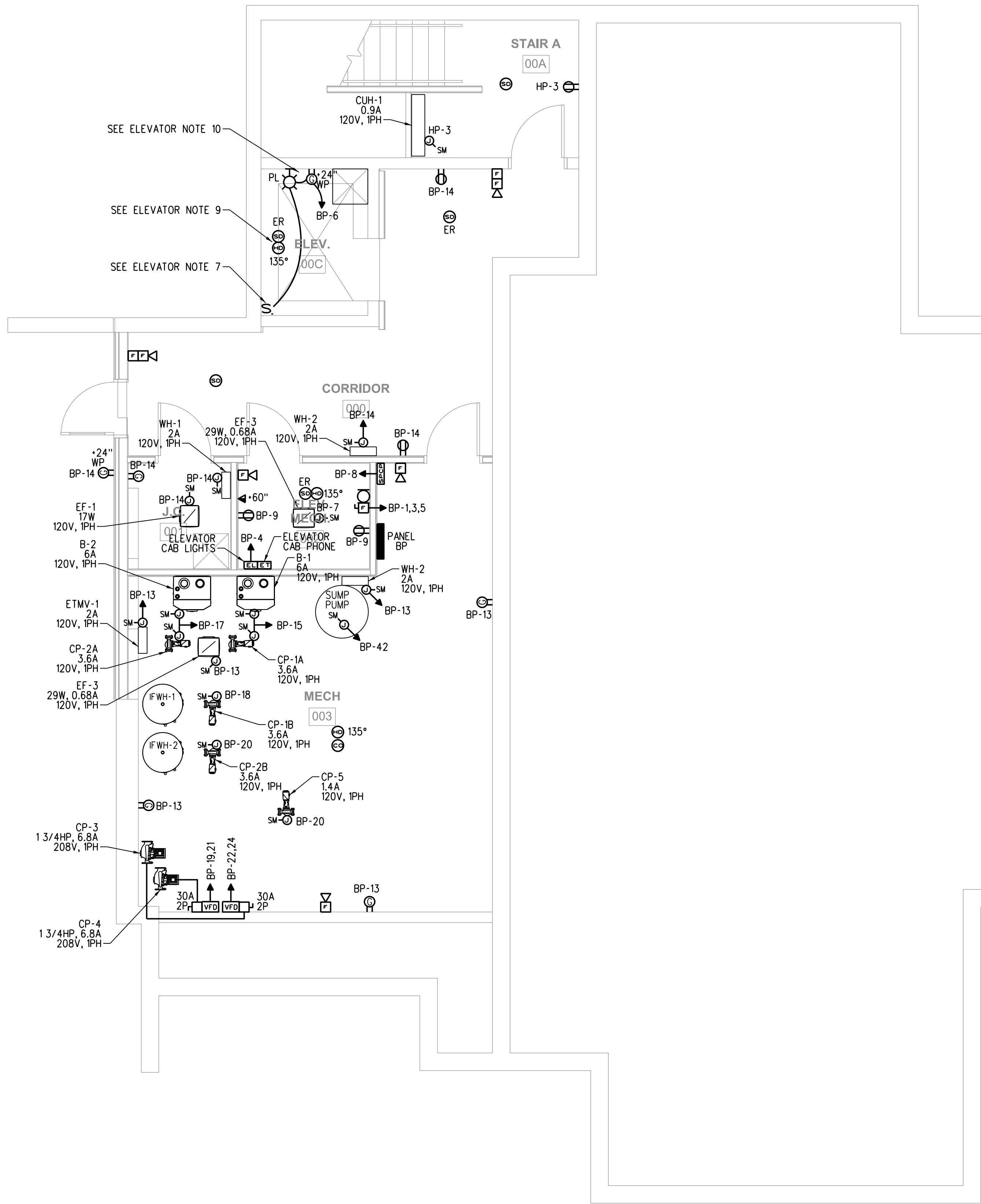


ELEVATOR NOTES

- CONNECT ALL REQUIRED SMOKE DETECTORS FOR ELEVATOR RECALL. VERIFY REQUIREMENTS WITH ELEVATOR VENDOR AND LOCAL FIRE DEPARTMENT FOR ELEVATOR SMOKE DETECTORS AND INSTALL IN ACCORDANCE WITH NFPA 72.
- PROVIDE ELEVATOR POWER SHUTDOWN VIA HEAT DETECTORS IN ELEVATOR SHAFT, PIT, AND MACHINE ROOM. HEAT DETECTORS ADJACENT TO SPRINKLER HEADS SHALL ALARM BEFORE SPRINKLER HEAD ACTIVATION BASED ON RATE OF TEMPERATURE RISE FOR THE SPRINKLER HEAD. HEAT DETECTORS SHALL BE INSTALLED WITHIN TWO FEET OF THE SPRINKLER HEAD. PROVIDE A CONNECTION TO A SHUNT-TRIP CIRCUIT BREAKER FOR ELEVATOR POWER SHUTDOWN. THE FIRE ALARM SYSTEM SHALL MONITOR SHUNT TRIP CONTROL POWER. COORDINATE WORK WITH THE LOCAL AUTHORITY HAVING JURISDICTION (LAHJ).
- PROVIDE A CONNECTION FROM THE ELEVATOR TAMPER SWITCH TO THE FIRE ALARM CONTROL PANEL (FACP).
- COMPLY WITH REQUIREMENTS ASME A17.1 AND NFPA 72.
- AUTOMATIC TRANSFER SWITCHES (ATS) MONITORING: PROVIDE 2*14AWG-1*14GND IN 1/2" C, FROM ELEVATOR CONTROL PANEL TO ATS DRY CONTACTS.
- CONFIRM ELEVATOR HORSEPOWER WITH ELEVATOR MANUFACTURER PRIOR TO INSTALLATION. DESIGN BASED ON 40 HP. PROVIDE WITH AUXILIARY CONTACTS.
- PLACE SWITCH AT TOP OF ELEVATOR PIT ACCESS LADDER.
- COORDINATE LOCATION OF ELEVATOR PIT LIGHT AND RECEPTACLE WITH ELEVATOR SUMP LOCATION.
- PLACE ONE SET IN ELEVATOR PIT AND ONE SET AT TOP OF ELEVATOR SHAFT.
- COORDINATE LOCATION OF PIT LIGHT AND RECEPTACLE WITH ELEVATOR SUMP PUMP.



BASEMENT PLAN
SCALE: 1/4"=1'-0"

PANEL HP (ELECTRICAL ROOM) SECTION 1 120/208 3PH 4W 400 AMP BUS - MLO 42K AIC NEMA TYPE 1 (SURFACE)

CKT #	LOAD DESCRIPTION	AT	P	CA	DF	DA	CKT #	LOAD DESCRIPTION	AT	P	CA	DF	DA	
1	STAIR A LIGHTS	20	1	4	1.00	4	2	STAIR B LIGHTS	20	1	4	1.00	4	
3	STAIR A RECEPITS AND CUH-1	20	1	9	0.70	6	4	STAIR B RECEPITS AND WH-2	20	1	9	0.70	6	
5	FIRST FLOOR LIGHTS	20	1	5	1.00	5	6	CORRIDOR 200 LIGHTS	20	1	1	1.00	1	
7	COMMUNITY RM LIGHTS	20	1	3	1.00	3	8	CORRIDOR 300 LIGHTS	20	1	1	1.00	1	
9	FACP	20	1	6	1.00	6	10	CORRIDOR 400 LIGHTS	20	1	1	1.00	1	
11	TBB TOP	20	1	2	0.50	1	12	ELECT RM RECEPITS & WH-1	20	1	8	0.70	6	
13	TBB BOTTOM	20	1	2	0.50	1	14	COMMUNITY RM AND VEST RECEPITS	20	1	8	0.70	6	
15	TOILET 115, CORR, TRASH, BIKE, SPRINK RECEPITS	20	1	9	0.50	5	16	AUTOMATIC DOOR OPERATORS	20	1	4	1.00	4	
17	TOILET 115, LAUNDRY, & TRASH WALL HEATERS	20	1	6	0.70	4	18	COMMUNIT RM RECEPITS	20	1	9	0.50	5	
19	WH-2s & EF-3 TRASH, CORR, BIKE, SPRINK	20	1	7	0.70	5	20	MEETING RM 1 RECETPS	20	1	5	0.50	3	
21	WASHER	20	1		0.50	0	22	MEETING RM 2 RECEPITS	20	1	5	0.50	3	
23	WASHER	20	1		0.50	0	24	MANAGEMENT OFFICE RECEPITS	20	1	8	0.50	4	
25	DRYER	30	2	22	0.50	11	26	RES. SERVICES RECEPITS	20	1	5	0.50	3	
27			22	0.50	11	28	CORRIDOR 200 RECEPITS & EF-2	20	1	6	0.70	4		
29	DRYER	30	2	22	0.50	11	30	CORRIDOR 300 RECEPITS & EF-2	20	1	6	0.70	4	
31			22	0.50	11	32	CORRIDOR 400 RECEPITS & EF-2	20	1	6	0.70	4		
33	PHOTOCELL AND TIME CLOCK (LC)	20	1	6	1.00	6	34	ROOF RECEPT	20	1	2	0.50	1	
35	EXTERIOR WALL PACKS VIA LC	20	1	2	0.70	1	36	SPARE	20	1			0	
37	CANOPY AND VESTIBULE LIGHTS VIA LC	20	1	3	0.70	2	38	SPARE	20	1			0	
39	LC SPARE	20	1			0	40	SPARE	20	1			0	
41	LC SPARE	20	1			0	42	SPARE	20	1			0	
43	SPARE	20	1			0	44	SPARE	20	1			0	
45	SPARE	20	1			0	46	SPARE	20	1			0	
47	SPARE	20	1			0	48	SPARE	20	1			0	
49	SPARE	20	1			0	50	SPARE	20	1			0	
51	SPARE	20	1			0	52	SPARE	20	1			0	
53	SPARE	20	1			0	54	SPARE	20	1			0	
55	SPARE	20	1			0	56				277	0.56	155	
57	SPARE	20	1			0	58	BP FEED VIA MTS	225	3		277	0.56	155
59	SPARE	20	1			0	60				277	0.56	155	

AT - Amp Trip
P - Poles
A - Amps
CA - Connected Amperes
DF - Demand Factor (1 - 1)
DA - Demand Amperes
MLO - Main Lug Only
MCB - Main Circuit Breaker

Section 1
Tot Amps/PH - Connected Load 356.70
Demand Factor 57.71%
Total Amps/PH - Demand 205.85
Connected KVA 128.35
Demand KVA 74.07
Min. Panel Size (Demand x 1.25) - Amps 257.31

- NOTES:
1. PROVIDE ARC FAULT TYPE CIRCUIT BREAKERS IN ACCORDANCE WITH NEC 210.12
2. PROVIDE TAMPER RESISTANT OUTLETS PER NEC 406.11 SECTION 210.52

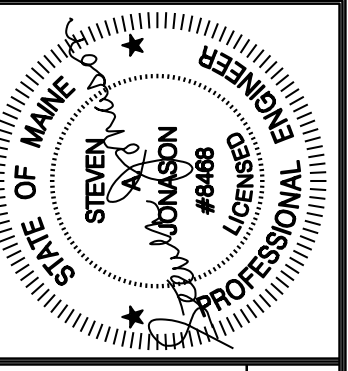
PANEL BP (MECHANICAL ROOM) SECTION 1 120/208 3PH 4W 225 AMP BUS - MLO 42K AIC NEMA TYPE 1 (RECESSED)

CKT #	LOAD DESCRIPTION	AT	P	CA	DF	DA	CKT #	LOAD DESCRIPTION	AT	P	CA	DF	DA
1	ELEVATOR SHUNT TRIP	150	3	120	0.50	60	2	ELEVATOR POWER	20	1	6	1.00	6
3		120	0.50	60	4	ELEVATOR CAB LIGHTS	20	1	4	1.00	4		
5		120	0.50	60	6	ELEVATOR SUMP PIT LIGHT & RECEPT	20	1	4	0.50	2		
7	EMR LIGHTS	20	1	3	0.50	2	8	ELEV SUMP PUMP CONTROL PANEL	20	1	10	0.70	7
9	EMR RECEPITS	20	1	3	0.50	2	10	SPACE					0
11	JC 001 RECEPT, EF-1 & WH-1	20	1	6	0.70	4	12	SPACE					0
13	MECH RM RECEPITS & WH-2	20	1	8	0.70	6	14	CORRIDOR 000 RECEPITS & WH-2	20	1	8	0.50	4
15	B-1 & CP-1A	20	1	11	0.70	8	16	CORRIDOR, JC & MECH LIGHTS	20	1	3	1.00	3
17	B-2 & CP-2A	20	1	11	0.70	8	18	CP-1B	20	1	4	0.70	3
19	CP-4	15	2	7	0.70	5	20	CP-2B & CP-5	20	1	6	0.70	4
21			7	0.70	5	22							
23	AC-101A, AC-101B, AC-111, AC-112, AC-113 & AC-114	20	2	12	0.70	8	24	CP-3	15	2	7	0.70	5
25			12	0.70	8	26							
27	AC-200	15	2	2	0.70	1	28	ACCU-1	90	3	72	0.50	36
29			2	0.70	1	30							
31	AC-300	15	2	2	0.70	1	32						1
33			2	0.70	1	34	AC-400	15	2	2	0.70	1	
35	PHC	40	3	28	0.70	20	36	ERV-1	20	1	11	0.70	8
37			28	0.70	20	38	SPACE	20	1				0
39			28	0.70	20	40	SPACE	20	1				0
41	SPARE	20	1			0	42	MECHANICAL ROOM SUMP PUMP	20	1	8	0.70	6
43	SPARE	20	1			0	44	SPARE	20	1			0
45	SPARE	20	1			0	46	SPARE	20	1			0
49	SPARE	20	1			0	50	SPARE	20	1			0
51	SPARE	20	1			0	52	SPARE	20	1			0
53	SPARE	20	1			0	54	SPARE	20	1			0
55	SPARE	20	1			0	56	SPARE	20	1			0
57	SPARE	20	1			0	58	SPARE	20	1			0
59	SPARE	20	1			0	60	SPARE	20	1			0

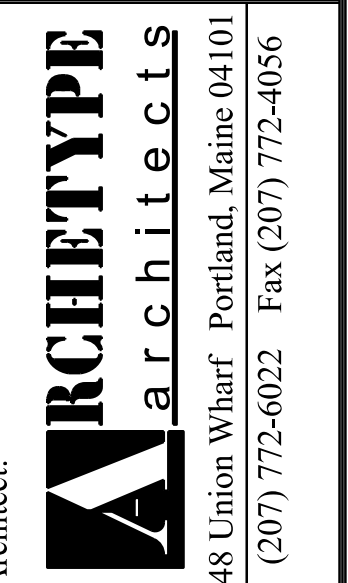
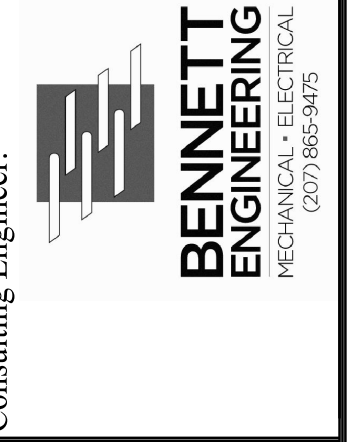
AT - Amp Trip
P - Poles
A - Amps
CA - Connected Amperes
DF - Demand Factor (1 - 1)
DA - Demand Amperes
MLO - Main Lug Only
MCB - Main Circuit Breaker

Section 1
Tot Amps/PH - Connected Load 276.70
Demand Factor 56.14%
Total Amps/PH - Demand 155.35
Connected KVA 99.57
Demand KVA 55.90
Min. Panel Size (Demand x 1.25) - Amps 194.19

- NOTES:
1. PROVIDE ARC FAULT TYPE CIRCUIT BREAKERS IN ACCORDANCE WITH NEC 210.12
2. PROVIDE TAMPER RESISTANT OUTLETS PER NEC 406.11 SECTION 210.52



Prepared For:



Project:
134 WASHINGTON AVENUE
1 FOLEY FARM ROAD
SCARBOROUGH, MAINE

Revisions:
10/17/14 - BID SET

Scale:
As Noted

Date:
Oct. 17, 2014

BASEMENT POWER PLAN

E300