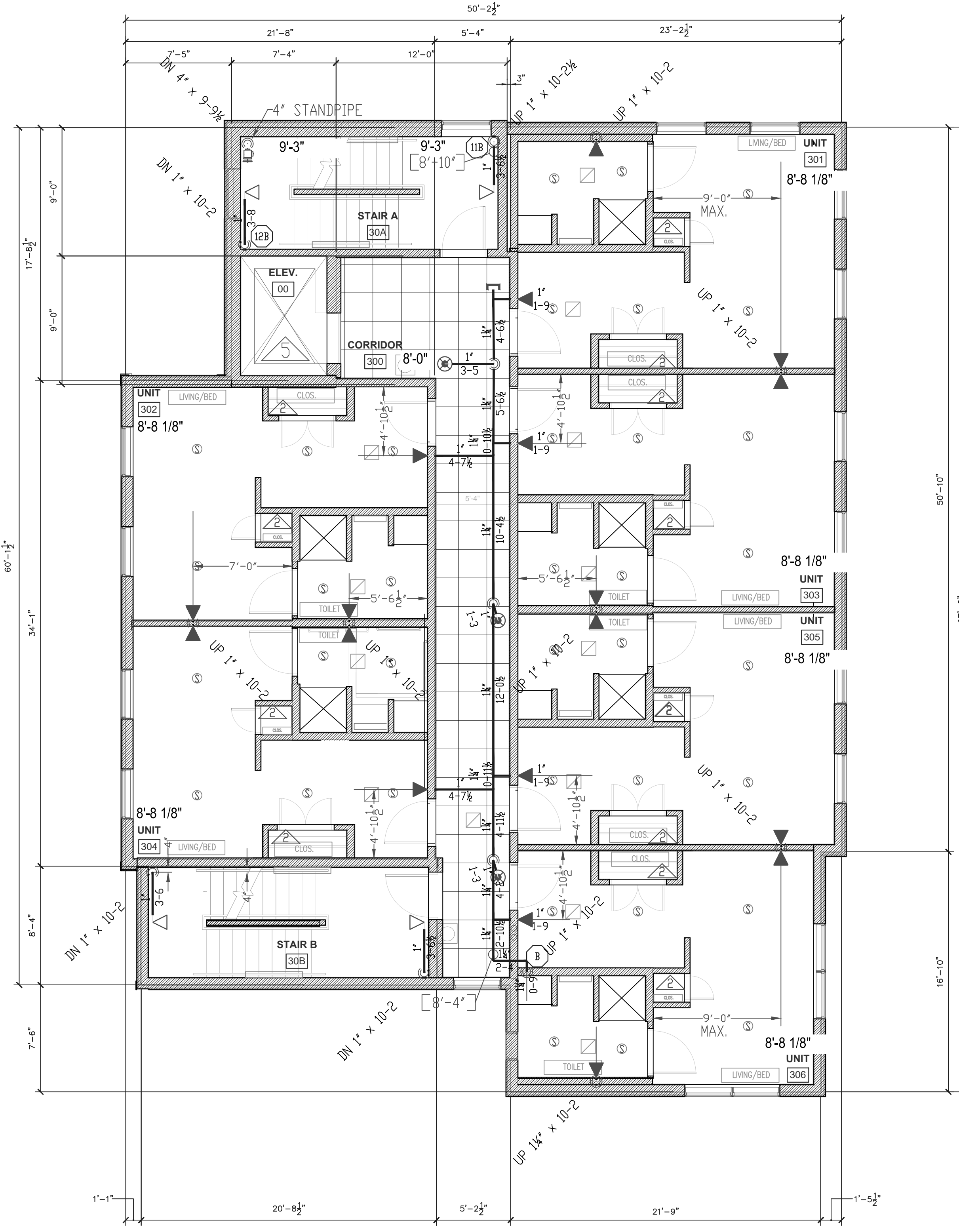
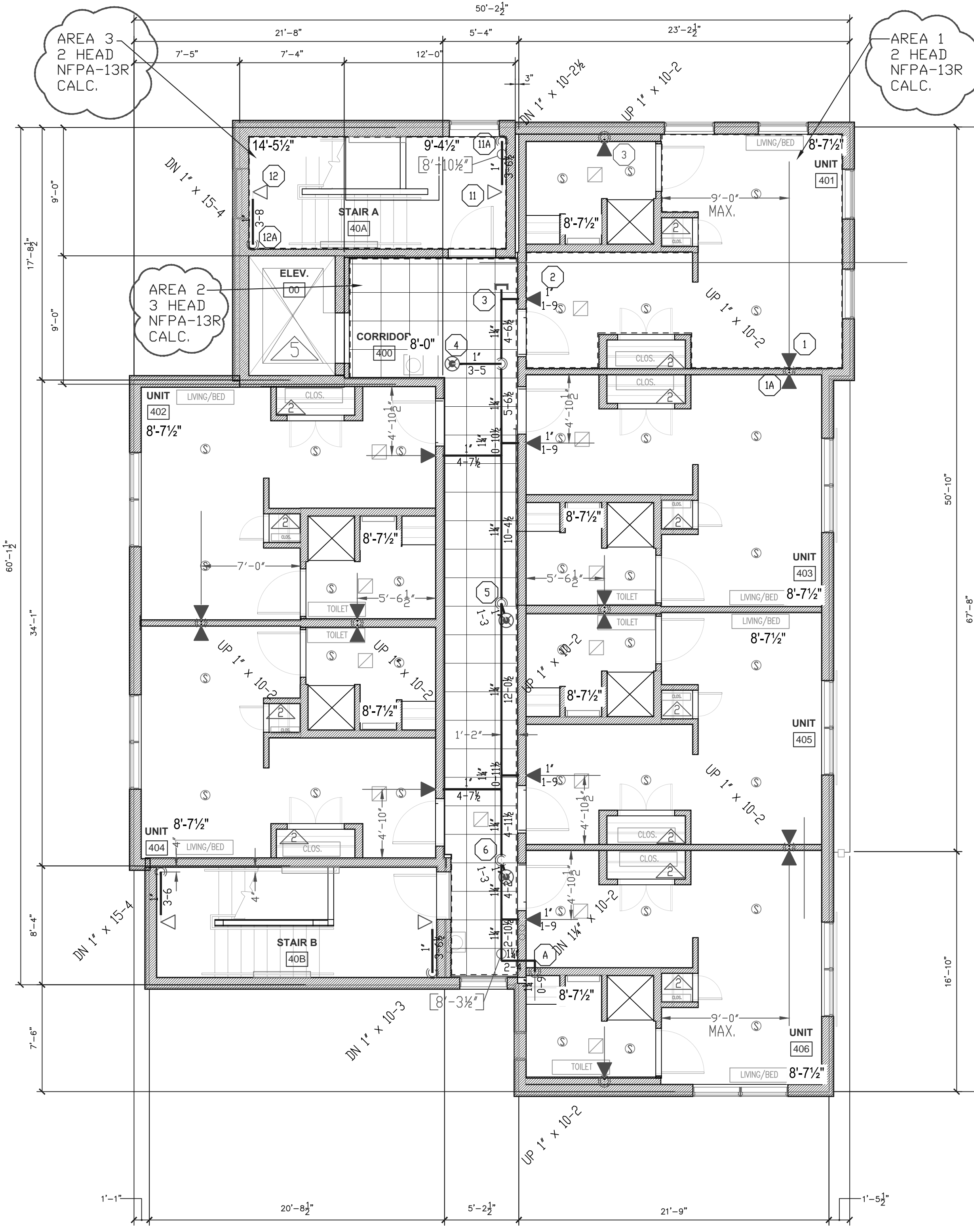


4\"/>



THIRD FLOOR PLAN
3/16\"/>

FIN. FLR. EL: 93.52'



FOURTH FLOOR PLAN
3/16\"/>

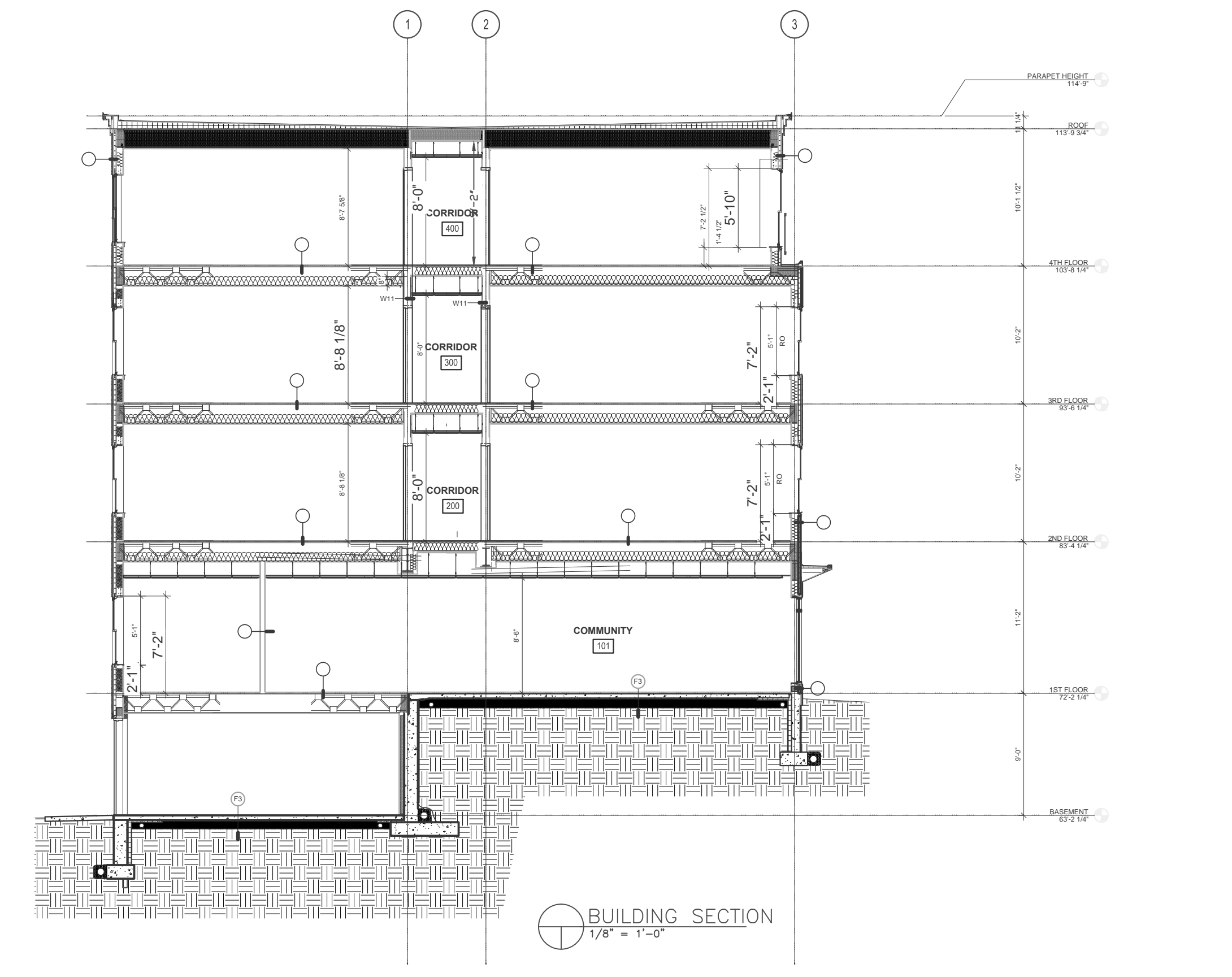
FIN. FLR. EL: 103.69'

GENERAL NOTES

- IT IS THE BUILDING OWNERS RESPONSIBILITY TO PROVIDE ADEQUATE HEAT FOR ALL AREAS IN THE BUILDING PROTECTED BY WET SPRINKLER SYSTEMS AND FOR ALL WATER FILLED SUPPLY PIPES, VALVES AND SYSTEM RISERS IN ALL DRY PIPE SPRINKLER SYSTEMS.
- ALL NEW PIPING IS TO BE HYDRAULICALLY TESTED AT NOT LESS THAN 200 PSI FOR 2 HOURS, OR AT 50 PSI IN EXCESS OF THE MAXIMUM PRESSURE, WHEN THE MAXIMUM PRESSURE TO BE MAINTAINED IS IN EXCESS OF 150 PSI. (PER NFPA 13)
- WHETHER OR NOT INDICATED ON DRAWINGS, THE FOLLOWING ITEMS ARE TO BE PROVIDED:
 - SPRINKLER HEAD CABINET WITH WRENCH (NFPA 13).
 - PROVISIONS FOR FLUSHING CONNECTIONS AND DRAINING OF ALL PIPE.
 - INSPECTORS TEST CONNECTION SHALL BE PROVIDED FOR EACH SYSTEM.
 - FOR WET PIPE SYSTEMS SEE NFPA 13)
 - FOR DRY PIPE SYSTEMS SEE NFPA 13)
 - AIR PRESSURE SHALL BE MAINTAINED ON ALL DRY PIPE SYSTEMS BY AN APPROVED AUTOMATIC AIR COMPRESSOR OR PLANT AIR SYSTEM SPECIFICALLY APPROVED FOR AND CAPABLE OF AUTOMATICALLY MAINTAINING THE REQUIRED AIR PRESSURE.
 - WET PIPE SYSTEMS SHALL BE PROVIDED WITH A RELIEF VALVE NOT LESS THAN 1/2\"/>
- ALL EXPOSED THREADED 1\"/>
- ALL WELDED PIPE 1 1/4\"/>
- FEED MAIN ABOVE FIRST FLOOR CEILING IS BLACK SCHEDULE 10 GROOVED WITH WELDED AND MECHANICAL FITTINGS. CPVC PIPE AND FITTINGS ARE TO BE USED TO PIPE TO SPRINKLERS IN THE DWELLING UNITS. ALL EXPOSED PIPE TO BE BLACK STEEL.
- THIS BUILDING IS A COMBUSTIBLE STRUCTURE WITH WOOD FLOORS AND ROOF. INTERIOR PARTITIONS ARE A WOOD STUD WITH GYPSUM BOARD EXTERIOR. CEILING CONSTRUCTION IS AS SHOWN ON PLANS.
- ALL MECHANICAL TRADES ARE TO COORDINATE THEIR WORK WITH SPRINKLER WORK AS SHOWN ON THESE PLANS.
- ALL HANGERS AND LOCATIONS ARE TO BE IN ACCORDANCE WITH N.F.P.A. 13.
- ALL SPRINKLER HEADS IN A.T. CEILING ARE TO BE LOCATED NO CLOSER THAN 3\"/>
- ALL PIPING IS TO BE PITCHED IN ACCORDANCE WITH N.F.P.A. 13.
- HYDRAULIC DATA REFERENCE POINTS: (U) ABOVE FINISH FLOOR (12\"/>
- CENTER LINE OF PIPE ABOVE FINISH FLOOR (12\"/>

NFPA 13R 2010 EXCLUSIONS

- SECTION 6.6.2 Sprinklers shall not be required in bathrooms where the bathroom area does not exceed 55 FS2 (51 sq. ft.)
- SECTION 6.6.3 Except where specified in 6.6.4, sprinklers shall not be required in closets, linen closets, and pantries within dwelling units that meet all of the following conditions:
 - (1) The area of the space does not exceed 24 FS2 (22 sq. ft.)
 - (2) The least dimension does not exceed 3 FT (0.9 m).
 - (3) The walls and ceilings are surfaced with noncombustible or fire-retardant treated materials as defined by NFPA 265.
- SECTION 6.6.4 Sprinklers shall be installed in any closet used for heating and air-conditioning equipment except as permitted by 6.6.7.
- SECTION 6.6.5 Sprinklers shall not be required in any porches, balconies, corridors, carports, and stairs that are open and attached.
- SECTION 6.6.6 Sprinklers shall not be required in penthouse equipment rooms, elevator machine rooms, concealed spaces dedicated exclusively to and containing only dwelling unit ventilation equipment, crawl spaces, floor/ceiling spaces, noncombustible elevator shafts where the elevator cars comply with ANSI A17.1, Safety Code for Elevators and Escalators, and other concealed spaces that are not used or intended for living purposes or storage and do not contain fuel-fired equipment.
- SECTION 6.6.6.1 When Fuel-Fired equipment is present, at least one quick-response intermediate temperature sprinkler shall be installed above the equipment.
- SECTION 6.6.7 Sprinklers shall not be required in closets (regardless of size) on exterior balconies and exterior breezeways/corridors, regardless of size, as long as the closet does not have doors or unprotected penetrations directly into the dwelling unit.



BUILDING SECTION
1/8\"/>

HYDRAULIC DATA NAMEPLATE

This Building is protected by a hydraulically designed Automatic Sprinkler System

Location **AREA 1**

No. of Sprinkler **2**

Basis of design

- Density **.05 gpm/sq ft**
- Design area of discharge **2 HEADS sq ft**

System Demand

- Water Flow Rate **29.18 gpm**
- Residual Pressure **49.045 psf**
- CUSHION **36.83 psf**

NOT MOST REMOTE

HYDRAULIC DATA NAMEPLATE

This Building is protected by a hydraulically designed Automatic Sprinkler System

Location **AREA 2**

No. of Sprinkler **3**

Basis of design

- Density **.05 gpm/sq ft**
- Design area of discharge **3 HEADS sq ft**

System Demand

- Water Flow Rate **32.45 gpm**
- Residual Pressure **51.862 psf**
- CUSHION **34.78 psf**

NOT MOST REMOTE

HYDRAULIC DATA NAMEPLATE

This Building is protected by a hydraulically designed Automatic Sprinkler System

Location **AREA 3**

No. of Sprinkler **2**

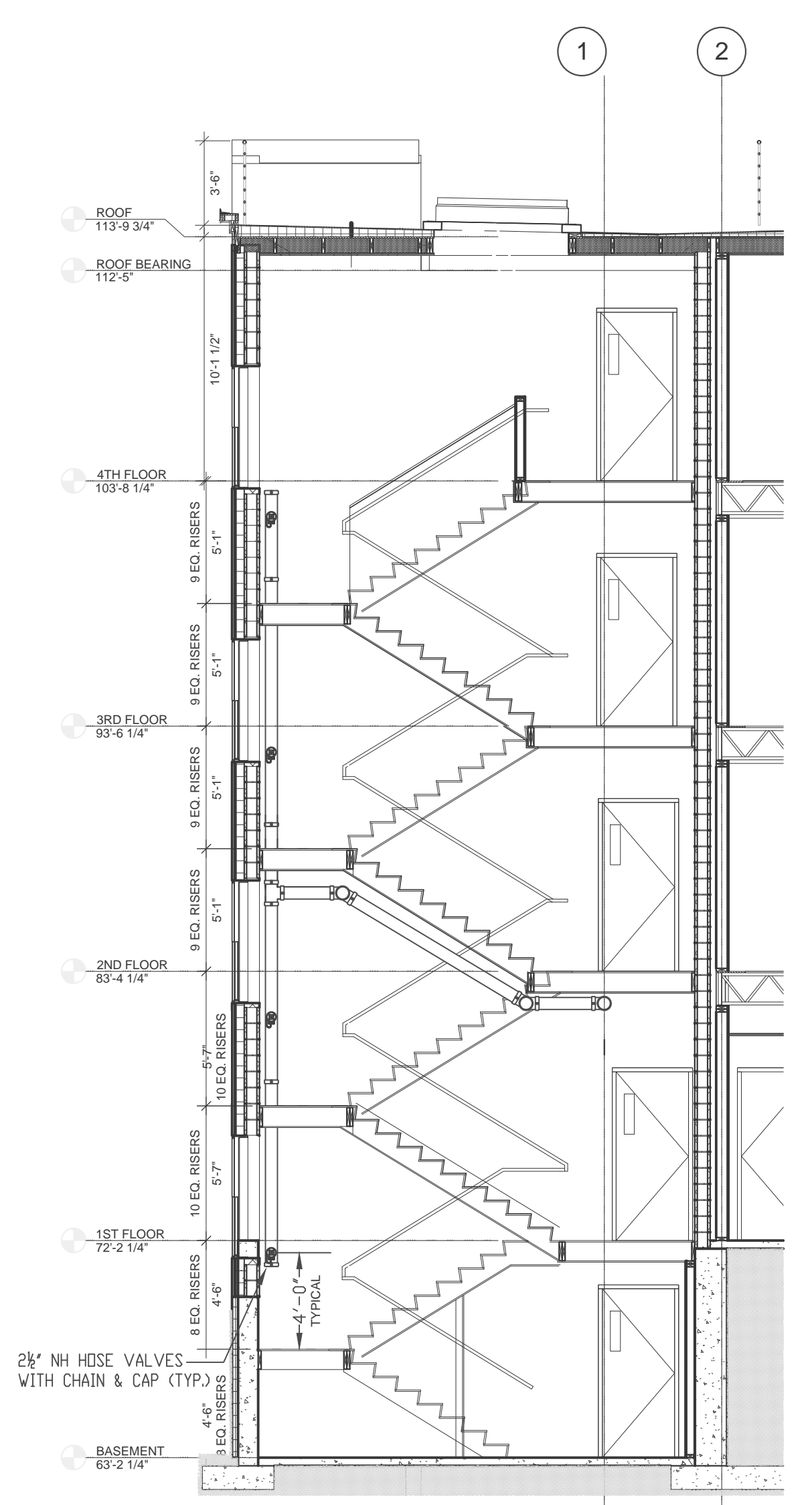
Basis of design

- Density **.10 gpm/sq ft**
- Design area of discharge **2 HEADS sq ft**

System Demand

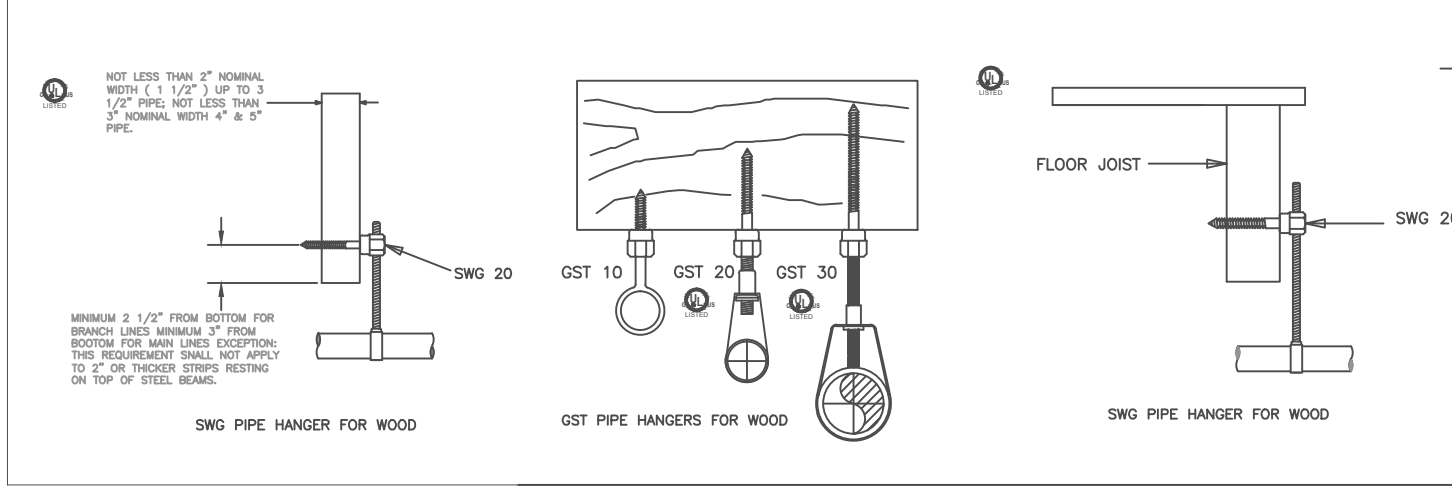
- Water Flow Rate **31.59 gpm**
- Residual Pressure **43.130 psf**
- CUSHION **42.76 psf**

NOT MOST REMOTE



STANDPIPE DETAIL
3/16\"/>

- Type of Hazard **LIGHT**
- Deflector Distance
- Pipe Type Used **10/40_BLK**
- Sprinkler Area
- Type of Construction **NON COMBUSTIBLE**
- Maximum Spacing Allowed **LT=225 SQ FT/HD, DRD=130 SQ FT/HD**
- PIPE SIZING METHOD: PIPE SCHEDULE HYDRAULICALLY CALCULATED
- ALL HANGERS AND LOCATIONS TO BE IN ACCORDANCE WITH NF.P.A. PAMPHLET NO. 13
- HIGH DEGREE TEMPERATURE SPRINKLER HEADS TO BE INSTALLED IN ACCORDANCE WITH NF.P.A. PAMPHLET NO. 13



HANGERS

AS SHOWN

ITEM	FPC	OTHERS
STREET CONN		
UGD MAIN		
EXCAVATION		
FLUSHING		
WORKING		
PAINTING		
TAMPER SWITCHES		
FLOW SWITCHES		
STREET CONN		

SPRINKLER HEAD LEGEND

SYMBOL	MAKE	MODEL	FINISH	TYPE	TEMP	NPT	DRIFICE	K-FACTOR	TOTAL
○	RELIABLE	FRFR	WHITE	SR PENNS	155 F	1/2"	1/2"	5.6	0/27
○	RELIABLE	FRFR	BRONZE	UPRIGHTS	250 F	1/2"	1/2"	5.6	0/7
○	RELIABLE	FRES49	WHITE	PENDENT	155 F	1/2"	7/16"	4.9	6/9
○	RELIABLE	FRES44	WHITE	HSW	155 F	1/2"	3/8"	4.4	36/55
○	RELIABLE	FRFR	BRONZE	HSW	155 F	1/2"	1/2"	5.6	8/15
TOTAL									58/113

SUBMITTALS

SENT TO	DATE SENT	DATE RECEIVED
DATE SENT	12/30/06	

SCALE AS NOTED

DRAWN BY CDS

CHECKED BY CDS

DATE 05/19/2015

TOTAL SPKRS ON JOB 113

SHEET# 2 OF 2

JOB# 15-040

SPRINKLER SYSTEMS INC.

P.O. BOX 1285
LEWISTON MAINE
04243-1285

134 WASHINGTON AVE APTS.
134 WASHINGTON AVE
PORTLAND, MAINE

CONTRACT WITH **HEBERT CONSTRUCTION**

SYSTEM TYPE	NO.	DATE	DESCRIPTION
WET	<input type="checkbox"/>		
DRY	<input type="checkbox"/>		
DELUGE	<input type="checkbox"/>		
PREACTION	<input type="checkbox"/>		
ME. LIFE	<input type="checkbox"/>		
NFPA-13R	<input checked="" type="checkbox"/>		