

- NFPA 13R 2010 EXCLUSIONS
- SECTION 6.6.2 Sprinklers shall not be required in bathrooms where the bathroom area does not exceed 55 Ft<sup>2</sup> (5.1 m<sup>2</sup>).
  - SECTION 6.6.3 Except where specified in 6.6.4, sprinklers shall not be required in clothes closets, linen closets, and pantries within dwelling units that meet all of the following conditions:
    - The area of the space does not exceed 24 Ft<sup>2</sup> (2.2 m<sup>2</sup>).
    - The least dimension does not exceed 3 Ft (0.91 m).
    - The walls and ceilings are surfaced with noncombustible or limited-combustible materials as defined by NFPA 220.
  - SECTION 6.6.4 Sprinklers shall be installed in any closet used for heating and air-conditioning equipment except as permitted by 6.6.7.
  - SECTION 6.6.5 Sprinklers shall not be required in any porches, balconies, corridors, carports, and stairs that are open and attached.
  - SECTION 6.6.6 Sprinklers shall not be required in penthouse equipment rooms, elevator machine rooms, concealed spaces dedicated exclusively to and containing only dwelling unit ventilation equipment, crawl spaces, floor/ceiling spaces, noncombustible elevator shafts where the elevator cars comply with ANSI A17.1, Safety Code for Elevators and Escalators, and other concealed spaces that are not used or intended for living purposes or storage and do not contain fuel-fired equipment.
  - SECTION 6.6.6.1 When fuel-fired equipment is present, at least one quick-response intermediate temperature sprinkler shall be installed above the equipment.
  - SECTION 6.6.7 Sprinklers shall not be required in closets (regardless of size) on exterior balconies and exterior breezeways/corridors, regardless of size, as long as the closet does not have doors or unprotected penetrations directly into the dwelling unit.

HYDRAULIC DATA NAMEPLATE

This Building is protected by a hydraulically designed Automatic Sprinkler System

Location AREA 4

No. of Sprinkler 9

Basis of design

- Density 10 gpm/ft<sup>2</sup>
- Design area 900 ft<sup>2</sup>

System Demand

- Water Flow Rate
  - @ BASE 19901 gpm
- Residual Pressure
  - @ BASE 51527 psi
  - CUSHION 3322 psi

NOT MOST REMOTE

HYDRAULIC DATA NAMEPLATE

This Building is protected by a hydraulically designed Automatic Sprinkler System

Location AREA 5

No. of Sprinkler 10

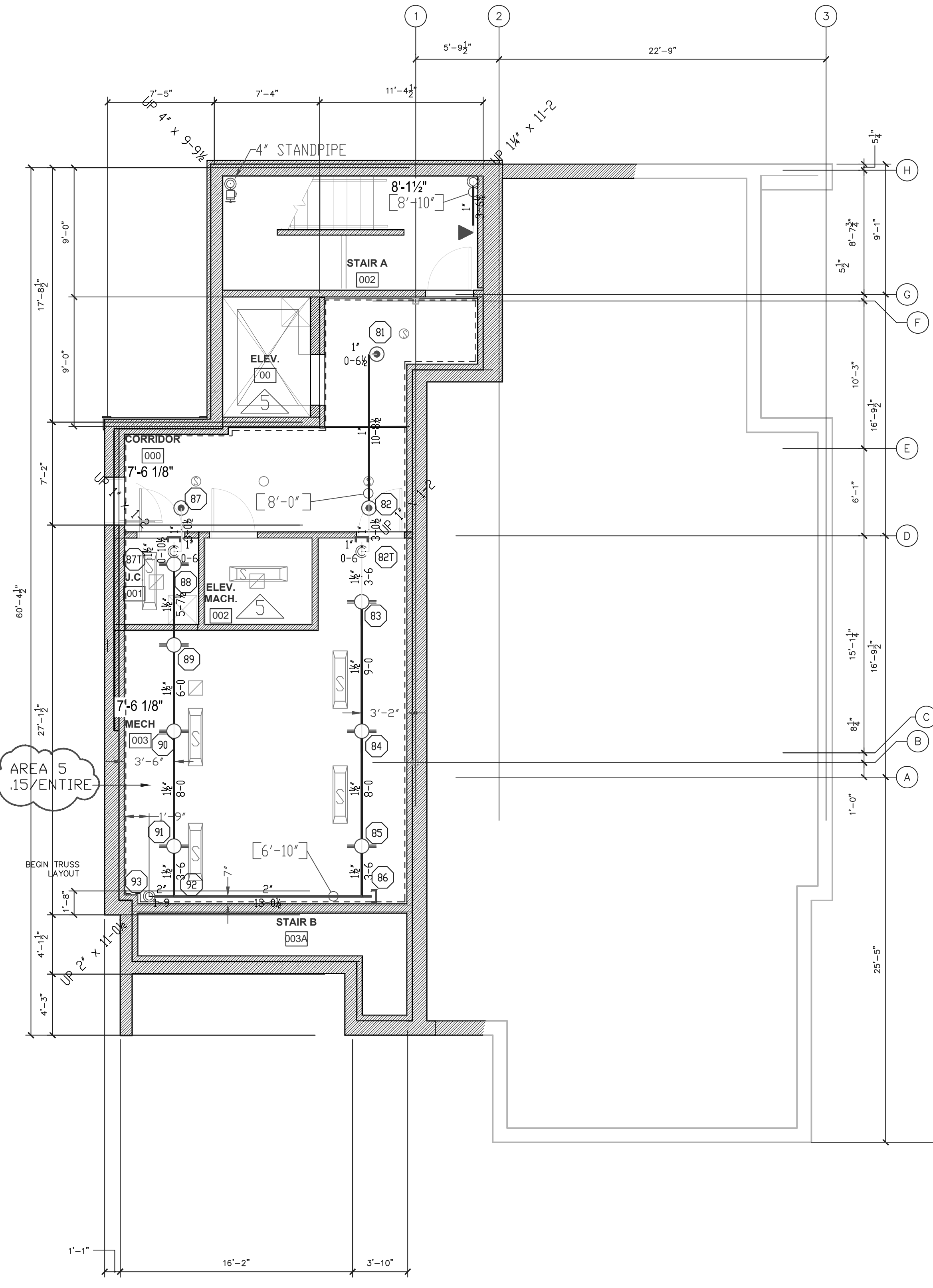
Basis of design

- Density 15 gpm/ft<sup>2</sup>
- Design area 900 ft<sup>2</sup>

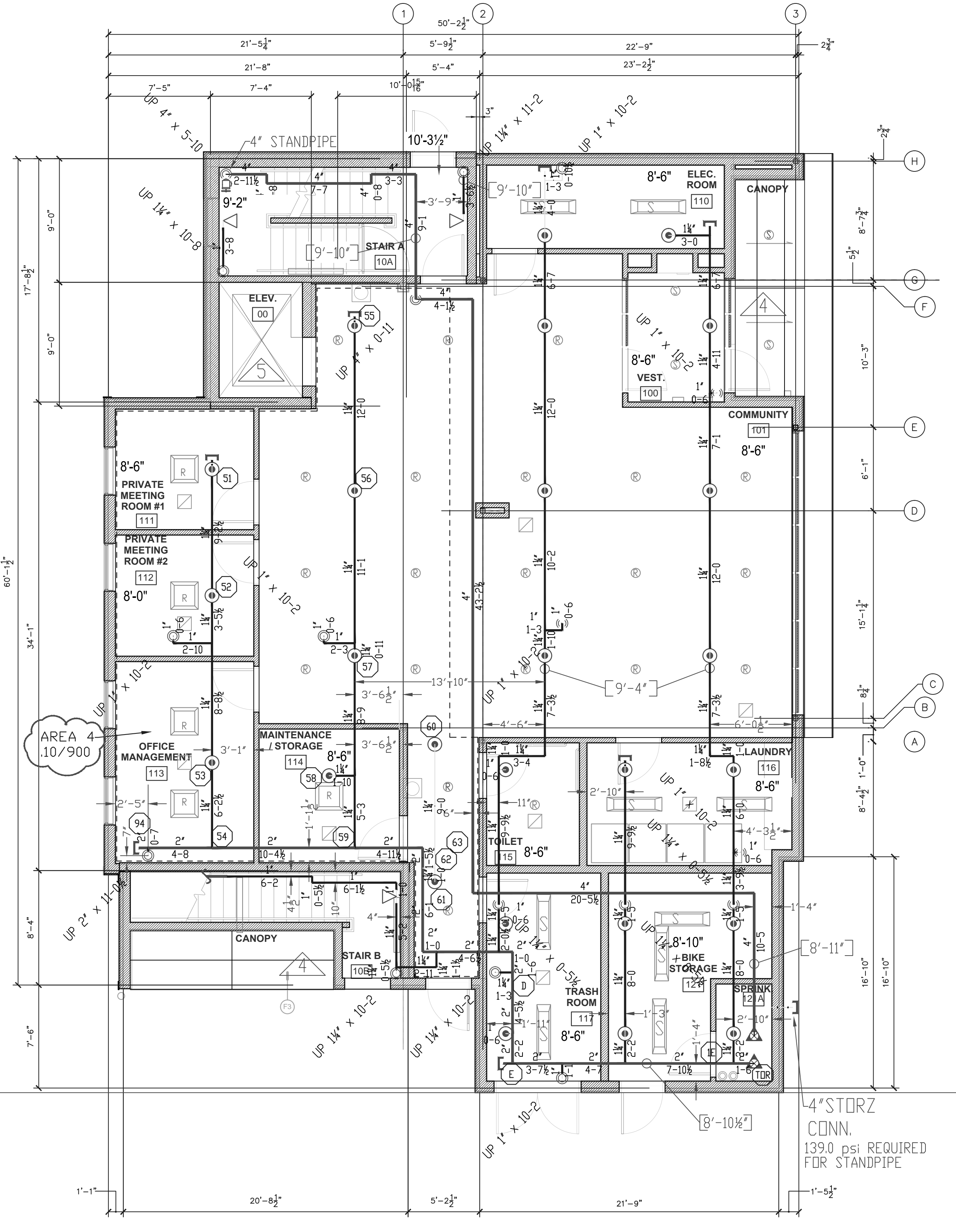
System Demand

- Water Flow Rate
  - @ BASE 21282 gpm
- Residual Pressure
  - @ BASE 69304 psi
  - CUSHION 1560 psi

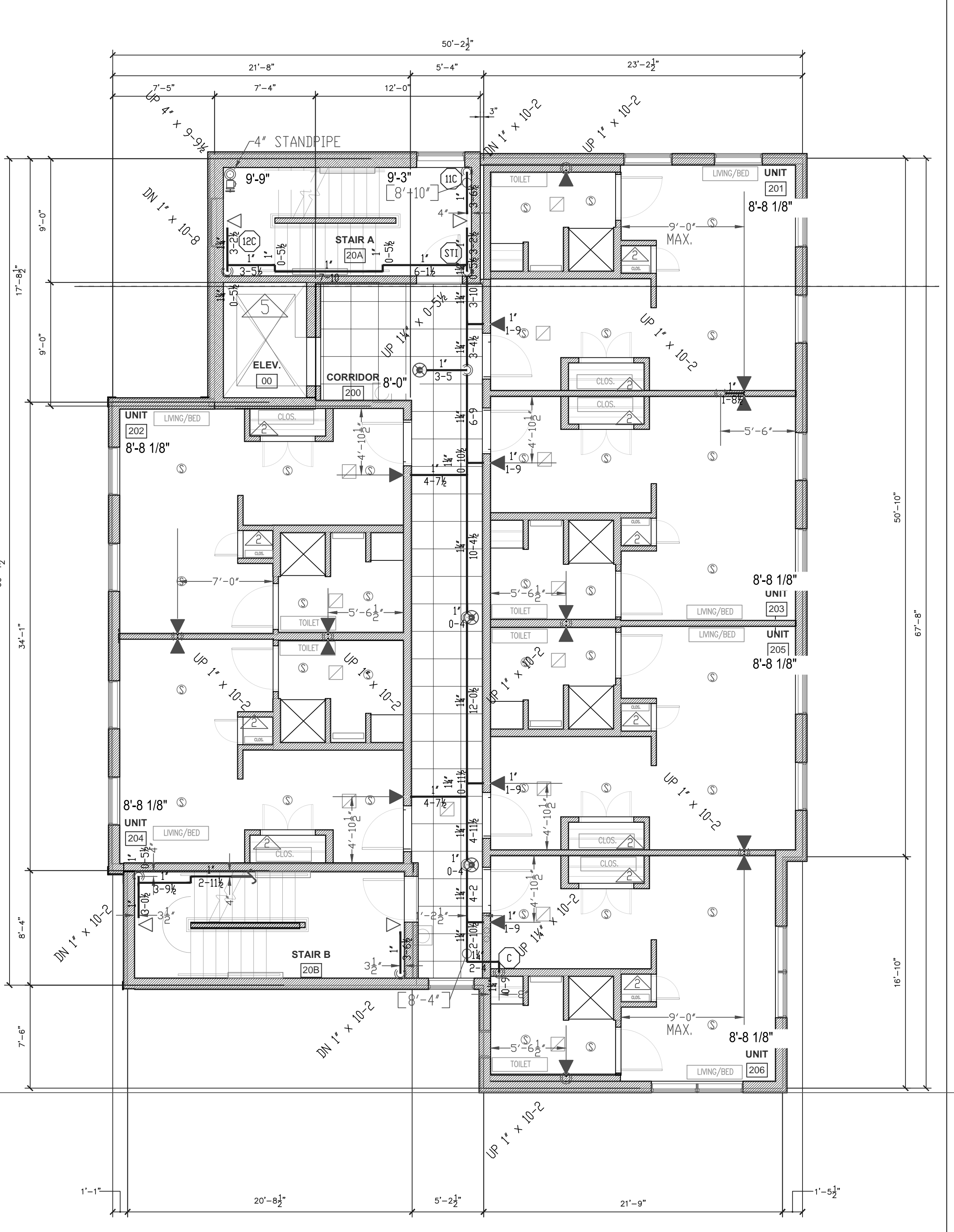
MOST REMOTE



BASEMENT FLOOR PLAN  
3/16" = 1'-0"  
FIN. FLR. EL: 63.21'

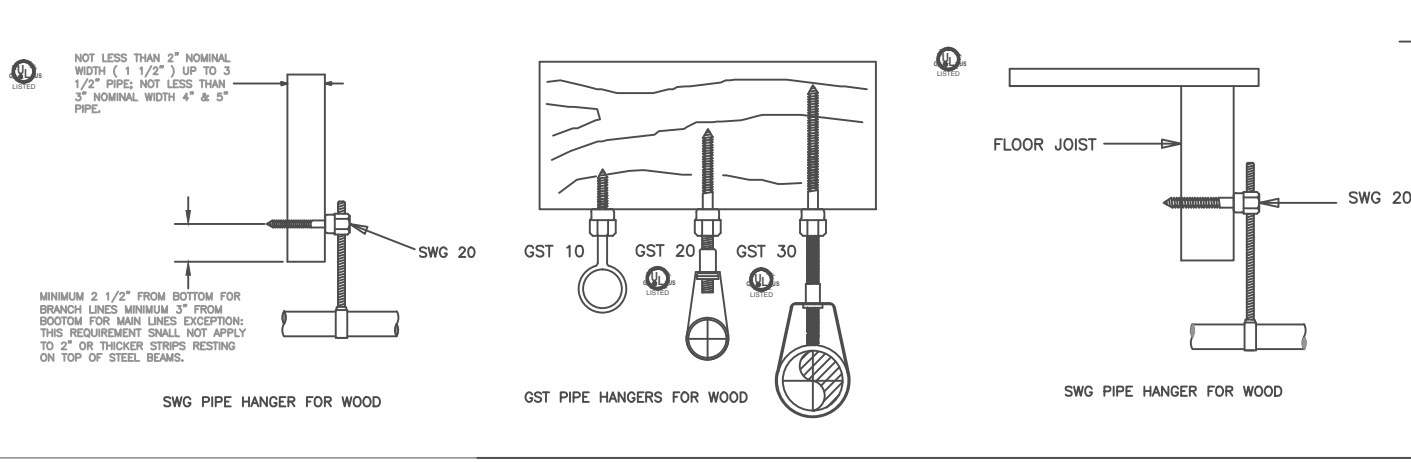


FIRST FLOOR PLAN  
3/16" = 1'-0"  
FIN. FLR. EL: 72.19'



SECOND FLOOR PLAN  
3/16" = 1'-0"  
FIN. FLR. EL: 83.35'

- Type of Hazard LIGHT
- Deflector Distance
- Pipe Type Used 10/40\_BLK
- Sprinkler Area
- Type of Construction NON COMBUSTIBLE
- Maximum Spacing Allowed LT=225 SQ FT/HD, DRD=130 SQ FT/HD
- PIPE SIZING METHOD: PIPE SCHEDULE  HYDRAULICALLY CALCULATED
- ALL HANGERS AND LOCATIONS TO BE IN ACCORDANCE WITH NFPA PAMPHLET NO. 13
- HIGH DEGREE TEMPERATURE SPRINKLER HEADS TO BE INSTALLED IN ACCORDANCE WITH NFPA PAMPHLET NO. 13



HANGERS

AS SHOWN

ITEM	FPC	OTHERS
STREET CONN		
UGD MAIN		
EXCAVATION		
FLUORING		
WORKING		
PAINTING		
TAMPER SWITCHES		
FLWV SWITCHES		
STREET CONN		

ABBREVIATIONS

Bottom of Deck

Bottom of Pipe

N & C

NC

NTS

OSJ

PRV

SP

TOB

TOS

TOP

UN

CL

NAS

OTA

CONTRACT RESPONSIBILITIES

SYMBOL MAKE MODEL FINISH TYPE TEMP NPT DRIFICE K-FACTOR TOTAL

RELIABLE	FJFR	WHITE	SR PENNS	155 F	1/2"	1/2"	5.6	27/27
RELIABLE	FJFR	Bronze	UPRIGHTS	200 F	1/2"	1/2"	5.6	7/7
RELIABLE	FJFR	WHITE	PENENT	155 F	1/2"	7/16"	4.9	3/9
RELIABLE	FJFR	HSW	HSW	155 F	1/2"	3/8"	4.4	19/55
RELIABLE	FJFR	Bronze	HSW	155 F	1/2"	1/2"	5.6	7/15
TOTAL								63/113

SUBMITTALS

SENT TO	DATE SENT 12/30/06	DATE RECEIVED
1'S D		
F M		
L M		
I R I		
L A		
STATE FIRE		
LOCAL FIRE		
LOCAL WATER		
G. C.		

LICENSE# 093 R.M.S.# 442 PERMIT #

P.O. BOX 1285 LEWISTON MAINE 04243-1285

SUBMITTAL DWG

134 WASHINGTON AVE APTS.  
134 WASHINGTON AVE  
PORTLAND, MAINE

CONTRACT WITH HEBERT CONSTRUCTION

SYSTEM TYPE	NO.	DATE	REVISIONS
WET			
DRY			
DELUGE			
PREACTION			
ME. LIFE			
NFPA-13R			

SCALE AS NOTED  
DRAWN BY CDS  
CHECKED BY CDS  
DATE 05/19/2015  
TOTAL SPKRS ON JOB 113  
SHEET# 1 OF 2  
JOB# 15-040