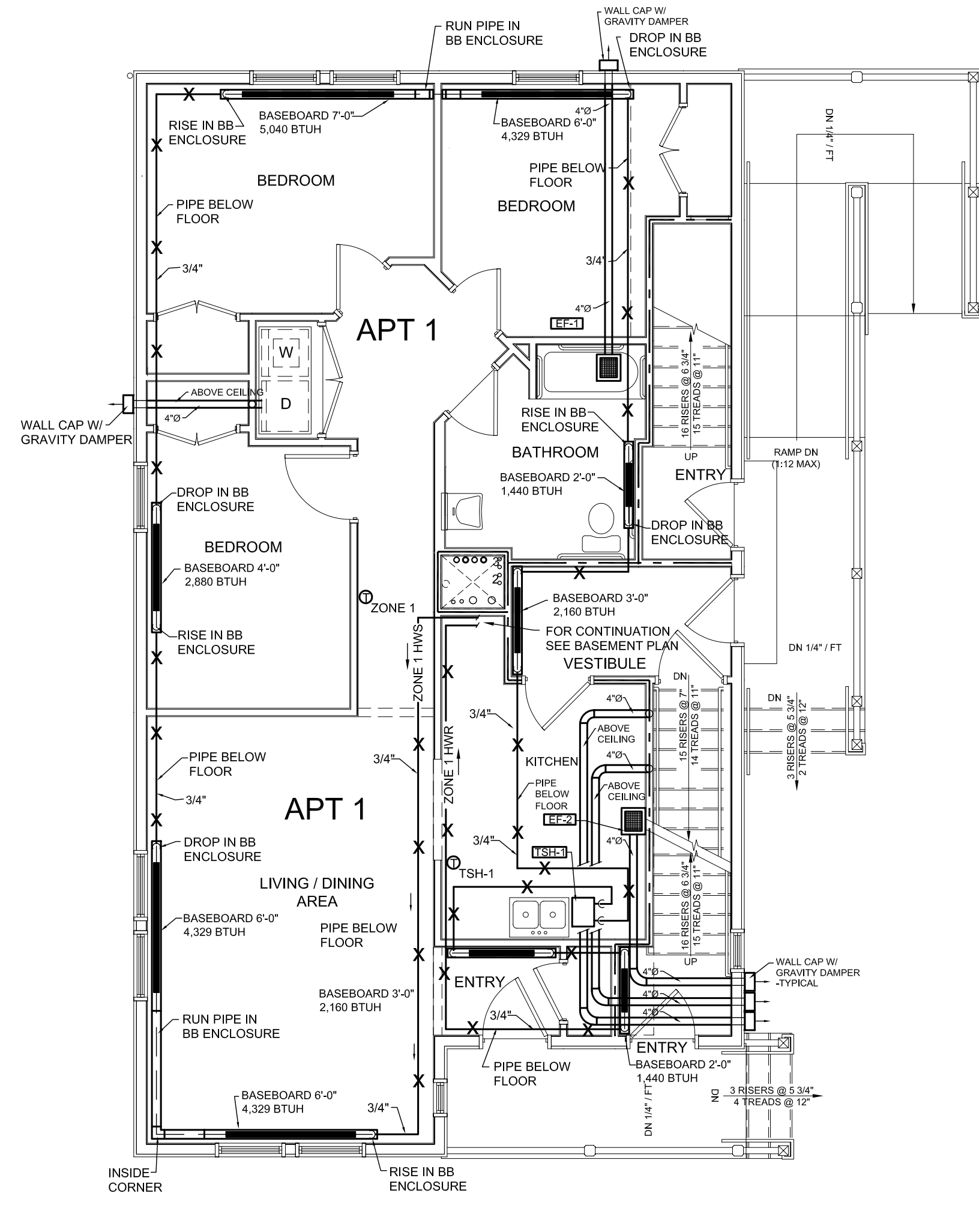
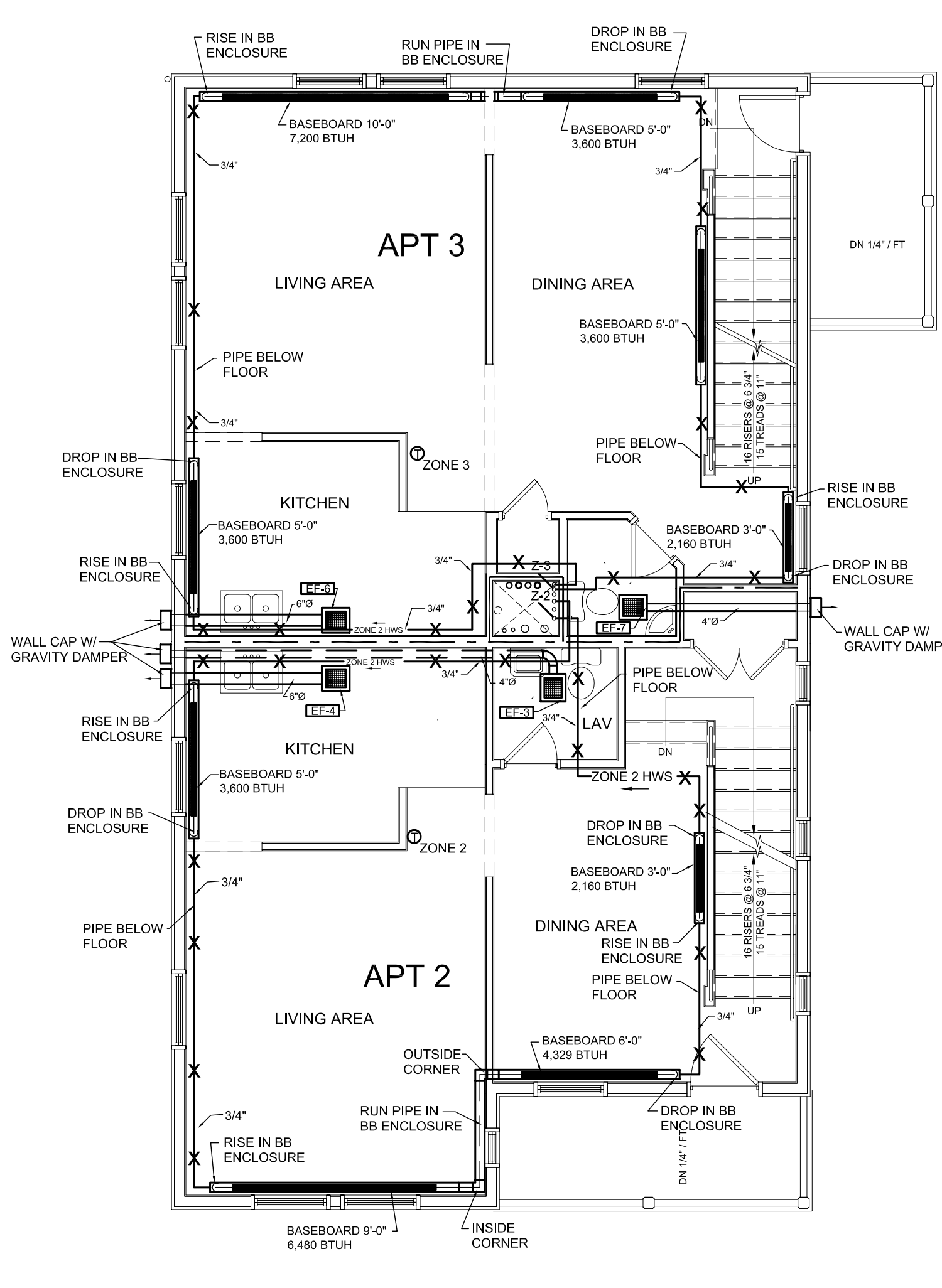


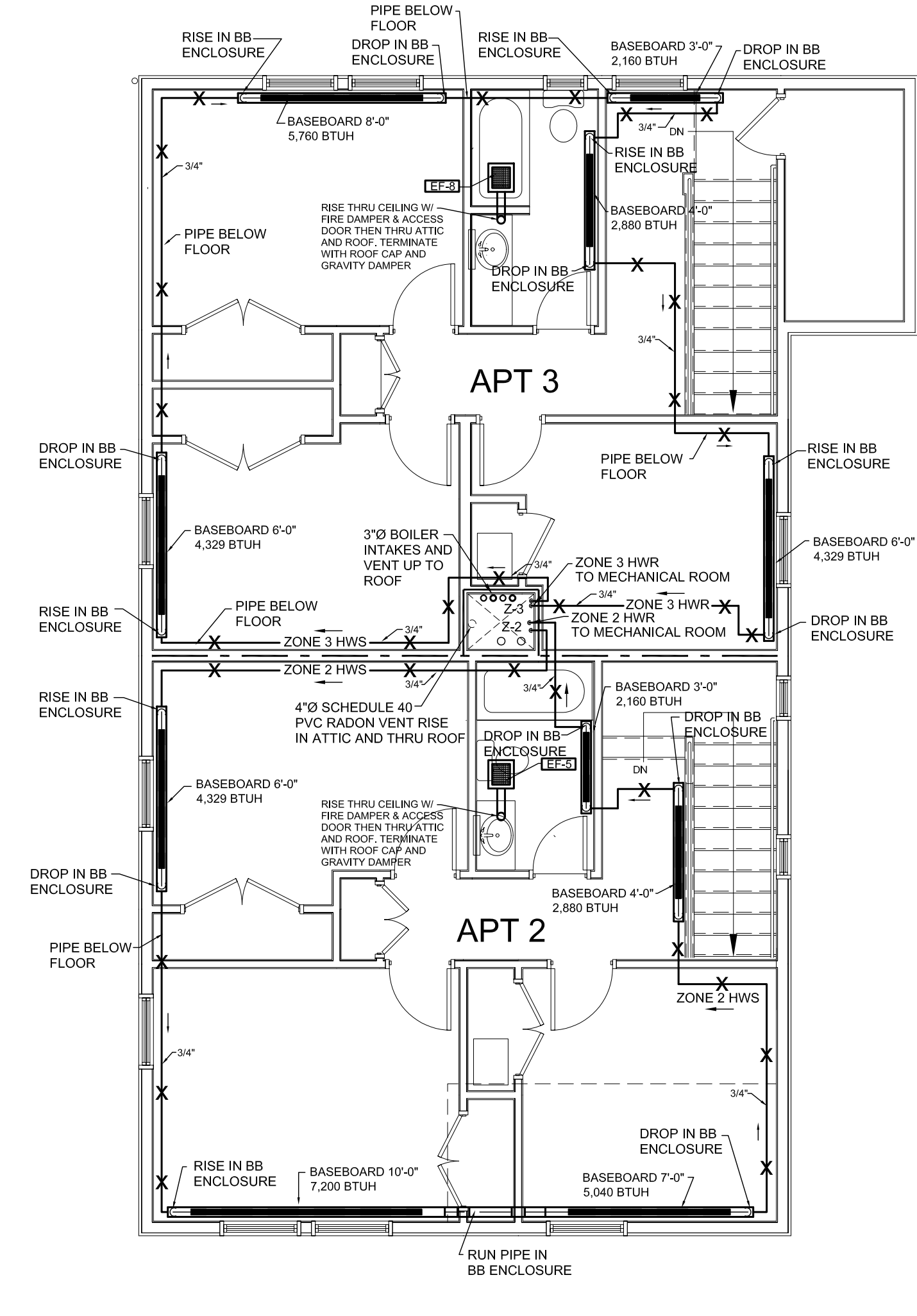
1 BASEMENT  
M1.1 3/16" = 1'-0"



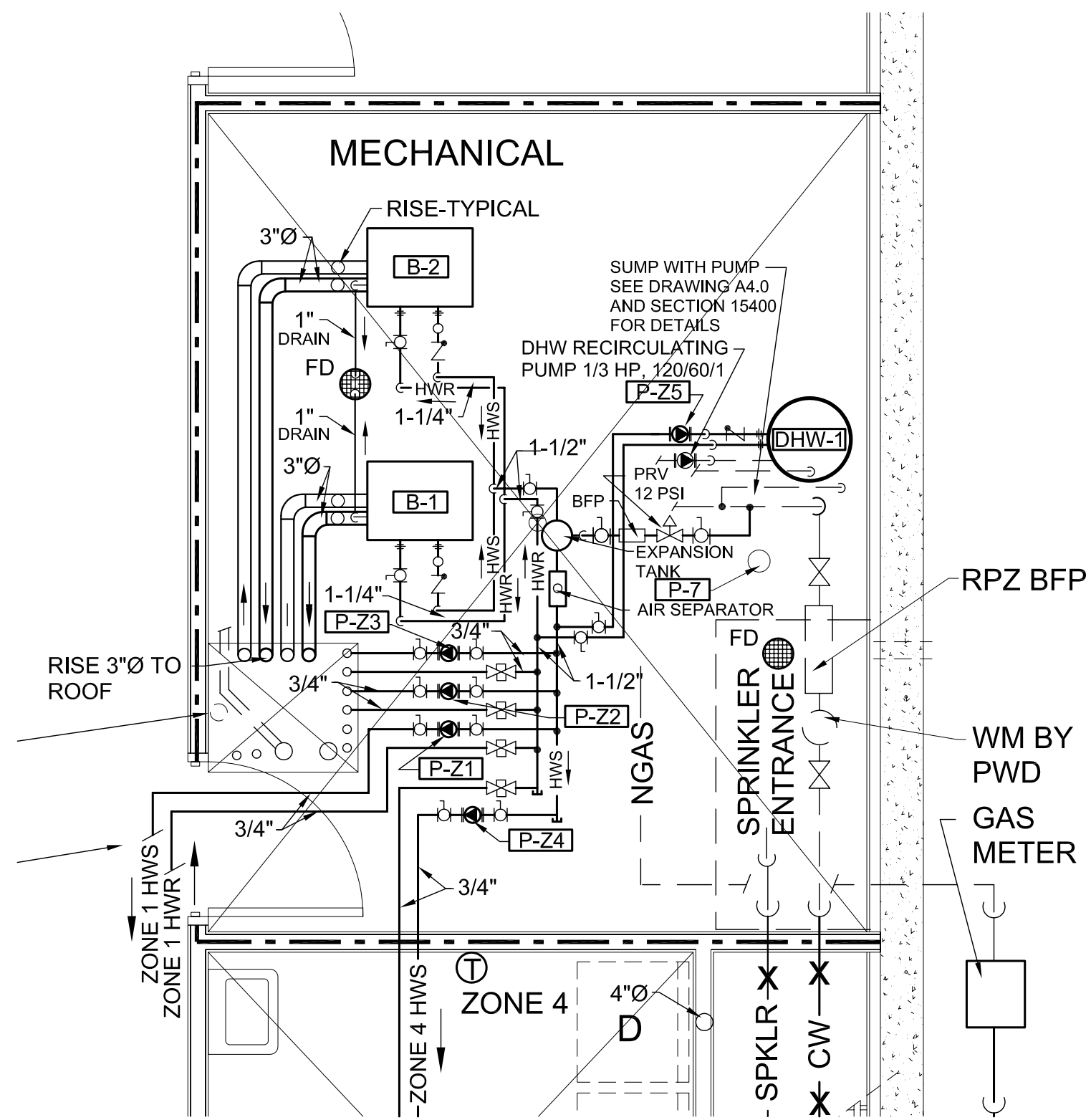
2 FIRST FLOOR  
M1.1 3/16" = 1'-0"



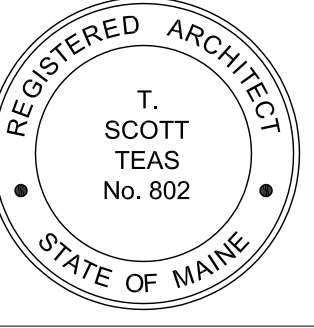
3 SECOND FLOOR  
M1.1 3/16" = 1'-0"



4 THIRD FLOOR  
M1.1 3/16" = 1'-0"



5 MECHANICAL ROOM LAYOUT  
M1.1 3/8" = 1'-0"



© 2005 TFH ARCHITECTS



ANDERSON STREET - BUILDING 2  
PEOPLE'S REGIONAL OPPORTUNITY PROGRAM  
PORTLAND, MAINE



TFH ARCHITECTS  
100 COMMERCIAL STREET  
PORTLAND MAINE 04101  
TELEPHONE 207 775 6141  
ARCHITECTURE PLANNING

CONSULTANTS:

- CIVIL:**  
Finkham & Greer  
170 US Route One  
Falmouth, ME 04105  
207-781-5242
- STRUCTURAL:**  
Structural Design Consulting  
Five Baskin Lane  
Falmouth, ME 04105-2448  
207-878-8038
- MECHANICAL:**  
Whitney Engineering  
10 Danforth Place  
Portland, ME 04102  
207-533-2921
- ELECTRICAL:**  
Barnett Engineering  
7 Barnett Road  
Friscoport, ME 04632  
207-865-6475

REVISIONS:

DATE: 01/14/05  
PROJECT No. 0406  
DRAWN BY: RPW  
CHECKED BY: RPW  
SCALE: AS NOTED

SHEET TITLE:  
HEATING PLAN

M1.1