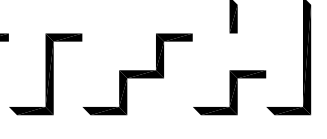


© 2005 TFH ARCHITECTS



ANDERSON STREET - BUILDING 2
PEOPLE'S REGIONAL OPPORTUNITY PROGRAM
PORTLAND, MAINE



TFH ARCHITECTS
 100 COMMERCIAL STREET
 PORTLAND MAINE 04101
 TELEPHONE 207 775 6141
 ARCHITECTURE PLANNING

CONSULTANTS:
CIVIL:
 Peckham & Greer
 170 US Route One
 Falmouth, ME 04105
 207-781-5242
STRUCTURAL:
 Structural Design Consulting
 Five Balmum Lane
 Falmouth, ME 04105-2448
 207-878-8038
MECHANICAL:
 Wilbur Engineering
 10 Danforth Place
 Portland, ME 04102
 207-533-2921
ELECTRICAL:
 Bennett Engineering
 7 Bennett Road
 Freeport, ME 04032
 207-865-0475

REVISIONS:

DATE: 01/14/05

PROJECT No. 0406

DRAWN BY: RPW

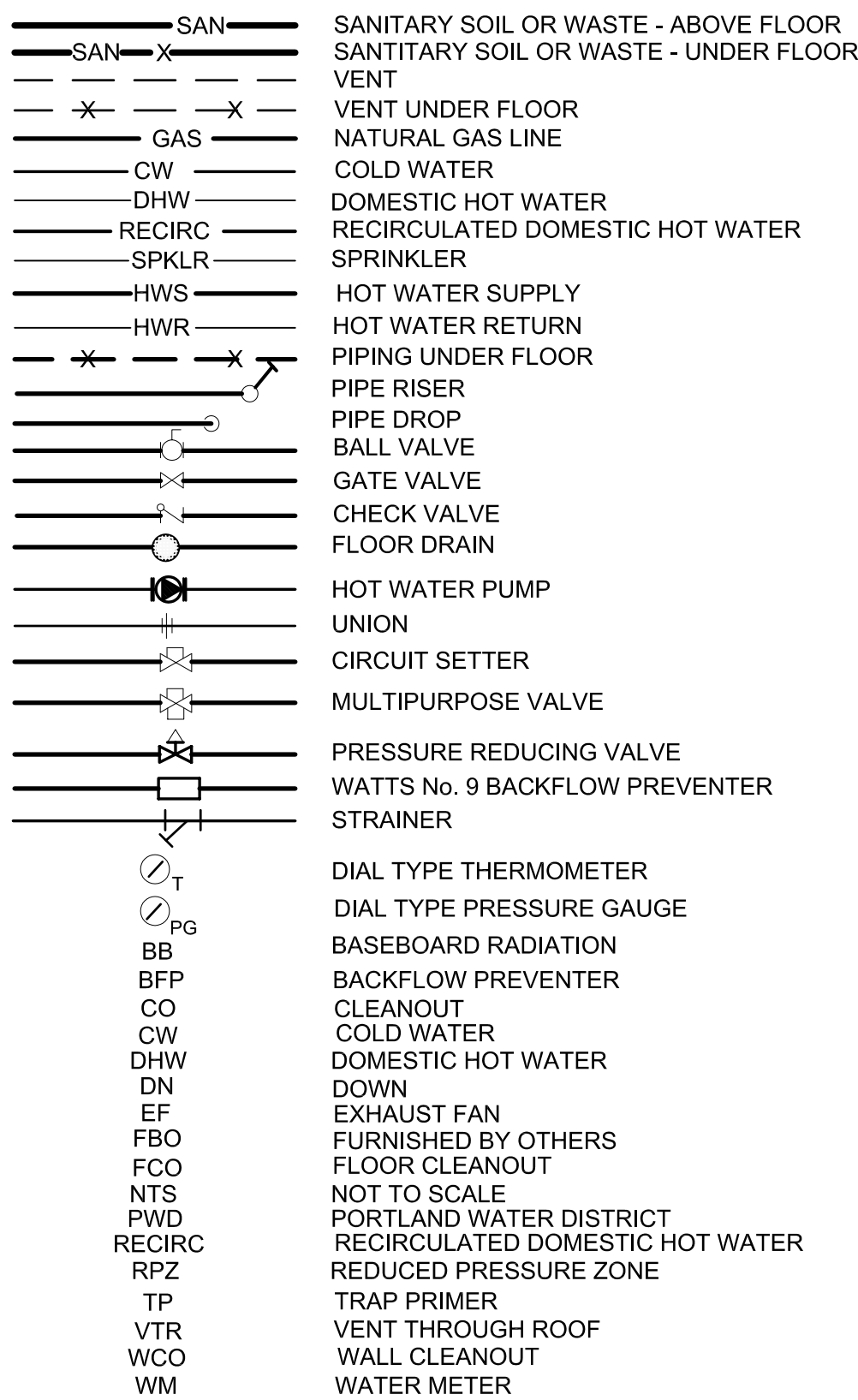
CHECKED BY: RPW

SCALE: AS NOTED

SHEET TITLE:
MECHANICAL
GENERAL NOTES,
SCHEDULES,
DETAILS

M1.0

MECHANICAL LEGEND:

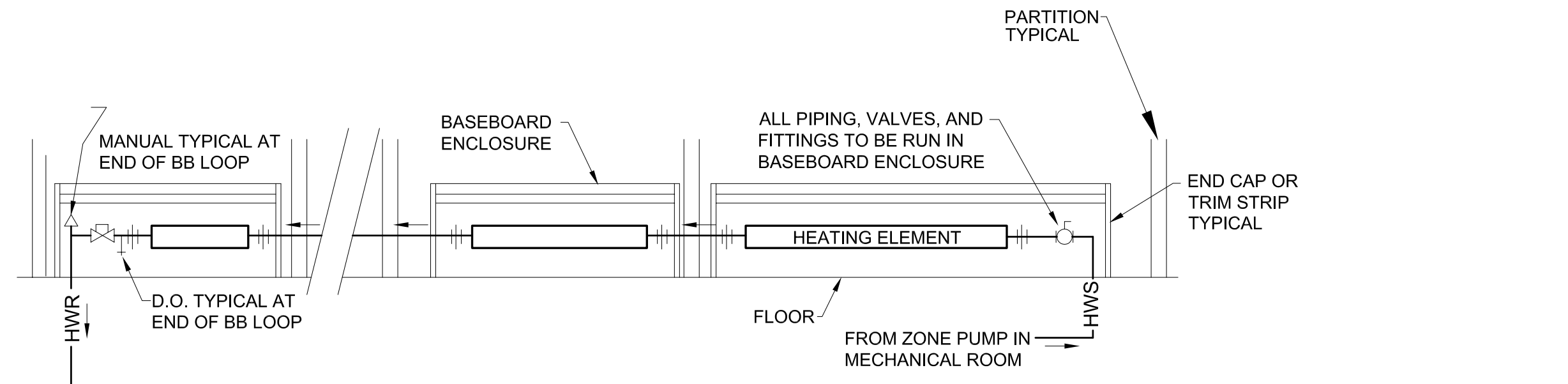


PLUMBING GENERAL NOTES:

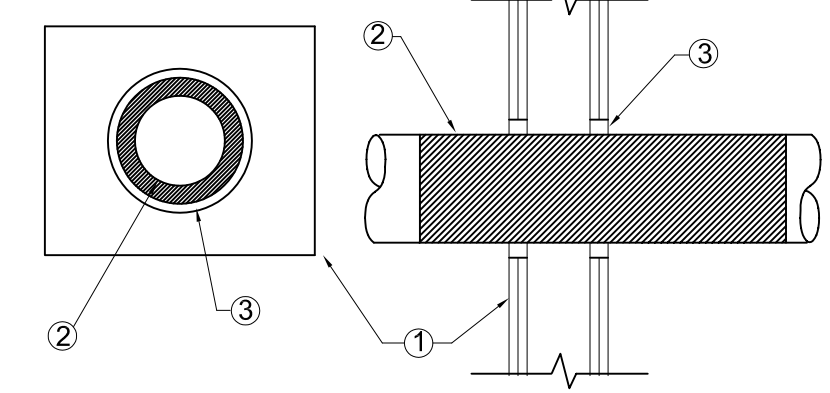
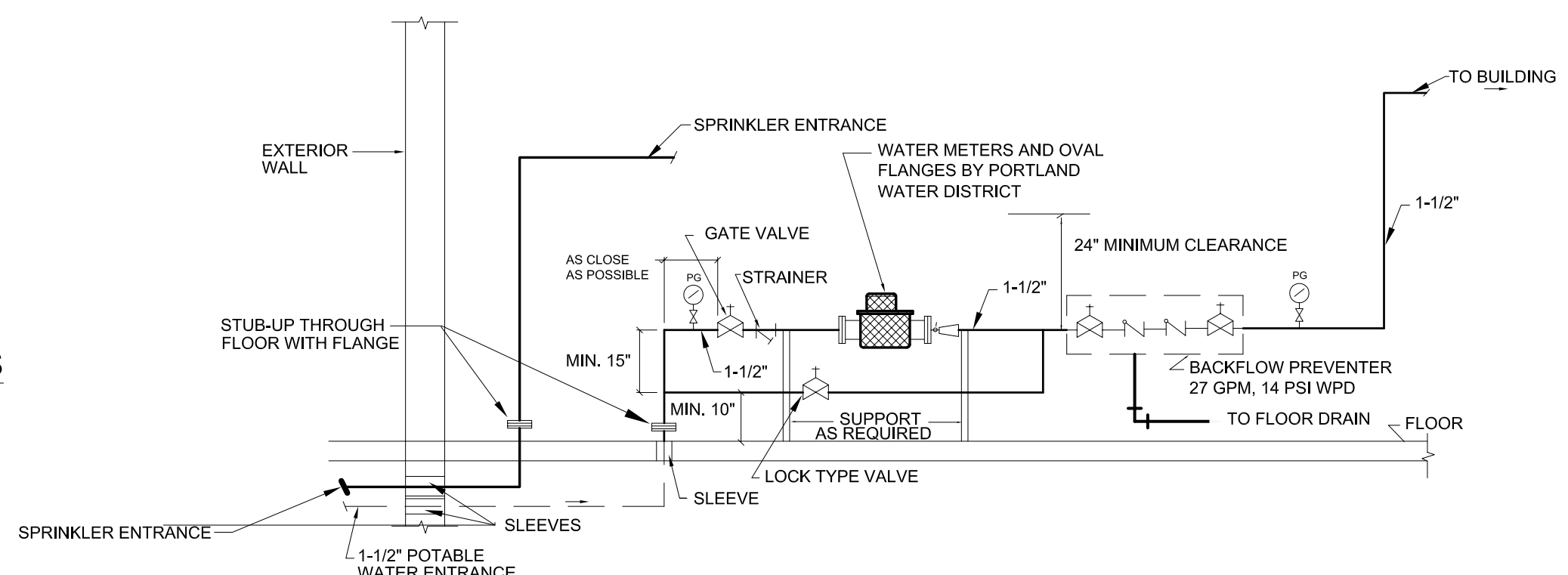
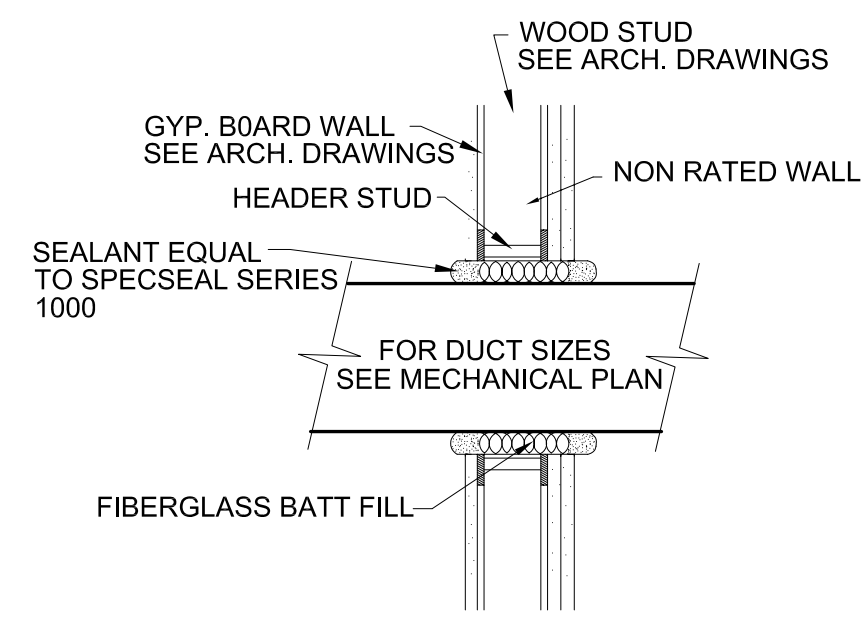
- ALL PLUMBING FIXTURES SHALL BE BACK VENTED.
- ALL PLUMBING WORK SHALL BE IN ACCORDANCE WITH STATE OF MAINE PLUMBING RULES OR THESE CONTRACT DOCUMENTS, WHICHEVER IS MORE STRICT.
- COORDINATE LOCATION OF PLUMBING PIPING WITH OTHER TRADES.
- PLUMBING CONTRACTOR SHALL MAKE ALL FINAL CONNECTIONS TO PLUMBING FIXTURES PROVIDED BY OTHERS.
- PIPE SIZES ARE NOMINAL (NOT O.D.) UNLESS INDICATED OTHERWISE.
- ALL PIPING SHALL RUN CONCEALED UNLESS SHOWN OTHERWISE.
- ALL PIPING IS SHOWN DIAGRAMMATICALLY. ACTUAL LOCATIONS SHALL BE DETERMINED IN THE FIELD.
- NO STRUCTURAL MEMBER SHALL BE CUT OR ALTERED WITHOUT APPROVAL OF ARCHITECT.
- ALL PLUMBING PIPING SHALL BE SUPPORTED FROM THE BUILDING STRUCTURE. ALL PIPING ABOVE SLAB SHALL BE SUPPORTED FROM TOP CHORD OF BAR JOISTS.
- ALL PIPING SHALL BE NEW, INSTALLED PARALLEL TO BUILDING LINES AND PITCHED TO LOW POINTS.
- ALL PIPING THRU ROOFS, MASONRY WALLS/ PARTITIONS SHALL HAVE PIPE SLEEVES. ALL PIPING PENETRATING WALLS, PARTITIONS OR FLOORS SHALL BE SEALED PER NFPA 101, "CODE FOR SAFETY TO LIFE FROM FIRE IN BUILDINGS AND STRUCTURES", 2000 EDITION.
- ALL HOT AND COLD WATER PIPING, BURIED OR OTHERWISE, SHALL BE INSULATED.
- RUN ALL HOT AND COLD WATER PIPING ON WARM SIDE OF BUILDING INSULATION.
- PROVIDE SHOCK ABSORBERS SIZED TO P.D.I. STANDARDS WHERE REQUIRED TO AVOID WATER HAMMER.
- PROVIDE DRAW-OFFS AT LOW POINTS IN DOMESTIC WATER PIPING. PITCH PIPING TO DRAIN.
- PROVIDE ACCESSIBLE CLEANOUTS AT BASE OF ALL STACKS AS SHOWN OR AS REQUIRED.
- ALL FIXTURES SHALL HAVE FLOW RESTRICTORS AND BE WATER SAVING TYPES.
- ALL PIPING DROPS TO FIXTURES SHALL BE ANCHORED SOLID TO WALLS WITH STEEL SUPPORT BRACKET AND ADJUSTABLE CLIP.
- ALL WALL FIXTURES SHALL BE CARRIER MOUNTED UNLESS SPECIFIED OTHERWISE.
- ALL FAUCETS SHALL NOT EXCEED AMOUNT OF LEAD SPECIFIED IN THE SAFE WATER DRINKING ACT.
- COORDINATE LOCATIONS AND MOUNTING HEIGHTS OF ALL PLUMBING FIXTURES WITH ARCHITECTURAL DRAWINGS.

HEATING AND VENTILATING GENERAL NOTES:

- COORDINATE HVAC WORK WITH OTHER TRADES
- ALL DUCTWORK AND PIPING SHALL BE CONCEALED AND LOCATED ON WARM SIDE OF BUILDING INSULATION
- ALL DUCTWORK AND PIPING IS SHOWN DIAGRAMMATICALLY. EXACT LOCATIONS ARE TO BE DETERMINED IN THE FIELD IN COORDINATION WITH OTHER TRADES.
- ALL DUCT SIZES SHOWN ARE OUTSIDE DIMENSIONS.
- REFER TO REFLECTED CEILING PLAN FOR EXACT LOCATION OF ALL AIR TERMINAL DEVICES.
- DUCT RUN BELOW JOISTS MUST BE LOCATED TO AVOID INTERFERENCE WITH LIGHT FIXTURES.
- ALL RECTANGULAR ELBOWS TO HAVE TURNING VANES. FRICTION LOSS THROUGH ELBOW TO EQUAL THAT OF SMOOTH RADIUS ELBOW.
- ALL HORIZONTAL PIPING AND DUCT RUNS MUST RUN IN FLOOR JOISTS OF BUILDING.



- NOTES:**
- BASEBOARD: PETITE 9 WITH A CAPACITY OF 800 BTUHLF @ 180F AVERAGE WATER TEMPERATURE, 1 GPM
 - EACH APARTMENT SHALL BE SINGLE ZONE WITH BASEBOARD ARRANGED IN A SERIES LOOP
 - FIELD MEASURE BASEBOARD FOR END CAPS OR TRIM STRIPS
 - PROVIDE LF OF BASEBOARD ELEMENT SHOWN ON DRAWINGS. HEATING CAPACITY SHOWN ON DRAWINGS IS ADJUSTED FOR POSITION ON SERIES LOOP.



PLUMBING FIXTURE SCHEDULE							
ITEM	FIXTURE	WASTE	TRAP	VENT	CW	HW	NOTES
P-1	WATER CLOSET	3"	3"	2"	1/2"	—	
P-1A	WATER CLOSET ADA APPROVED	3"	3"	2"	1/2"	—	
P-2	COUNTERTOP LAVATORY	1-1/2"	1-1/2"	1-1/2"	1/2"	1/2"	
P-3	WALL MOUNTED CORNER LAVATORY	1-1/2"	1-1/2"	1-1/2"	1/2"	1/2"	
P-4	WALL MOUNTED LAVATORY	1-1/2"	1-1/2"	1-1/2"	1/2"	1/2"	
P-4A	WALL MOUNTED LAVATORY ADA APPROVED	1-1/2"	1-1/2"	1-1/2"	1/2"	1/2"	
P-5	TUB/SHOWER	2"	2"	1-1/2"	1/2"	1/2"	
P-5A	TUB/SHOWER ADA APPROVED	2"	2"	1-1/2"	1/2"	1/2"	
P-6	KITCHEN SINK DOUBLE BOWL	2"	1-1/2"	1-1/2"	1/2"	1/2"	
P-6A	KITCHEN SINK DOUBLE BOWL ADA APP.	2"	1-1/2"	1-1/2"	1/2"	1/2"	
P-7	CLOTHES WASHER (FBO)	2"	2"	1-1/2"	1/2"	1/2"	
P-7A	CLOTHES WASHER (FBO) ADA APPROVED	2"	2"	1-1/2"	1/2"	1/2"	
P-8	FLOOR DRAIN	3"	3"	1-1/2"	—	—	W/ TRAP PRIMER
P-9	LAUNDRYMATE	—	—	—	1/2"	1/2"	
P-10	NON-FREEZE HOSE BIBB	—	—	—	3/4"	3/4"	
P-11	SHOWER	2"	2"	1-1/2"	1/2"	1/2"	

FAN SCHEDULE									
TAG	EF-1	EF-2	EF-3	EF-4	EF-5	EF-6	EF-7	EF-8	
APARTMENT	1	1	2	2	2	3	3	3	
LOCATION	BATHROOM	KITCHEN	LAVATORY	KITCHEN	BATHROOM	KITCHEN	LAVATORY	BATHROOM	
SERVICE	EXHAUST	RANGE HOOD	EXHAUST	RANGE HOOD	EXHAUST	RANGE HOOD	EXHAUST	EXHAUST	
MAKE	CEILING	IN-LINE	CEILING	IN-LINE	CEILING	IN-LINE	CEILING	CEILING	
COOK MODEL	GC-180	HOOD MFGR	GC-180	HOOD MFGR	GC-180	HOOD MFGR	GC-180	GC-180	
BLOWER DATA	C.F.M.	100	200	100	200	100	200	100	
	S.P.	0.375	0.375	0.375	0.375	0.375	0.375	0.375	
	TYPE	FC	FC	FC	FC	FC	FC	FC	
	DRIVE	DIRECT	DIRECT	DIRECT	DIRECT	DIRECT	DIRECT	DIRECT	
MOTOR DATA	H.P. OR WATTS	87 W	141 W	87 W	141 W	87 W	141 W	87 W	
	R.P.M. (FAN)	820	1,363	820	1,363	820	1,363	820	
	VOLTS	120	120	120	120	120	120	120	
	PHASE	60	60	60	60	60	60	60	
	HZ	1	1	1	1	1	1	1	
	MAX. SONES	3.0	7.0	3.0	7.0	3.0	7.0	3.0	

PUMP SCHEDULE									
TAG	LOCATION	SERVICE	TYPE	GPM	TDH	HP	RPM	POWER	NOTES
P-1	MECHANICAL ROOM	SPACE HEATING	CARTRIDGE	4.0	23.0	1/12	2,650	120/60/1	
P-2	MECHANICAL ROOM	SPACE HEATING	CARTRIDGE	4.0	22.2	1/12	2,650	120/60/1	
P-3	MECHANICAL ROOM	SPACE HEATING	CARTRIDGE	4.0	21.6	1/12	2,650	120/60/1	
P-4	MECHANICAL ROOM	SPACE HEATING	CARTRIDGE	4.0	16.1	1/12	2,650	120/60/1	
P-5	MECHANICAL ROOM	DHW HEATING	IN-LINE	8.0	15.0	1/6	3,400	120/60/1	
P-6	MECHANICAL ROOM	DHW RECIRC.	CARTRIDGE	4.0	23.0	1/12	2,650	120/60/1	
P-7	MECHANICAL ROOM	SUMP PUMP	SUBMERSIBLE	28.0	23.0	1/4	3,000	120/60/1	MYERS No. S25

BOILER SCHEDULE												
UNIT	INPUT MBH	OUTPUT DOE MBH	OUTPUT IBR MBH	AFUE %	MUNCHKIN MODEL NO.	FUEL	ELECTRICAL AMPS	POWER	DOMESTIC HOT WATER MODEL NO.	OUTPUT 1ST HOUR	NOTES	
B-1	199.0	183.0	159.0	92	199M	NGAS	15	120/60/1	SSU-30	70,000 BTUH	140 GALS	1 AND 2
B-2	199.0	183.0	159.0	92	199M	NGAS	15	120/60/1				

- NOTES:**
- DHW FIRST HOUR RATING BASED ON 115F @ 65F WATER TEMPERATURE DROP
 - PROVIDE BOILERS WITH LO-HIGH-LO BURNER OPERATING MODE.

