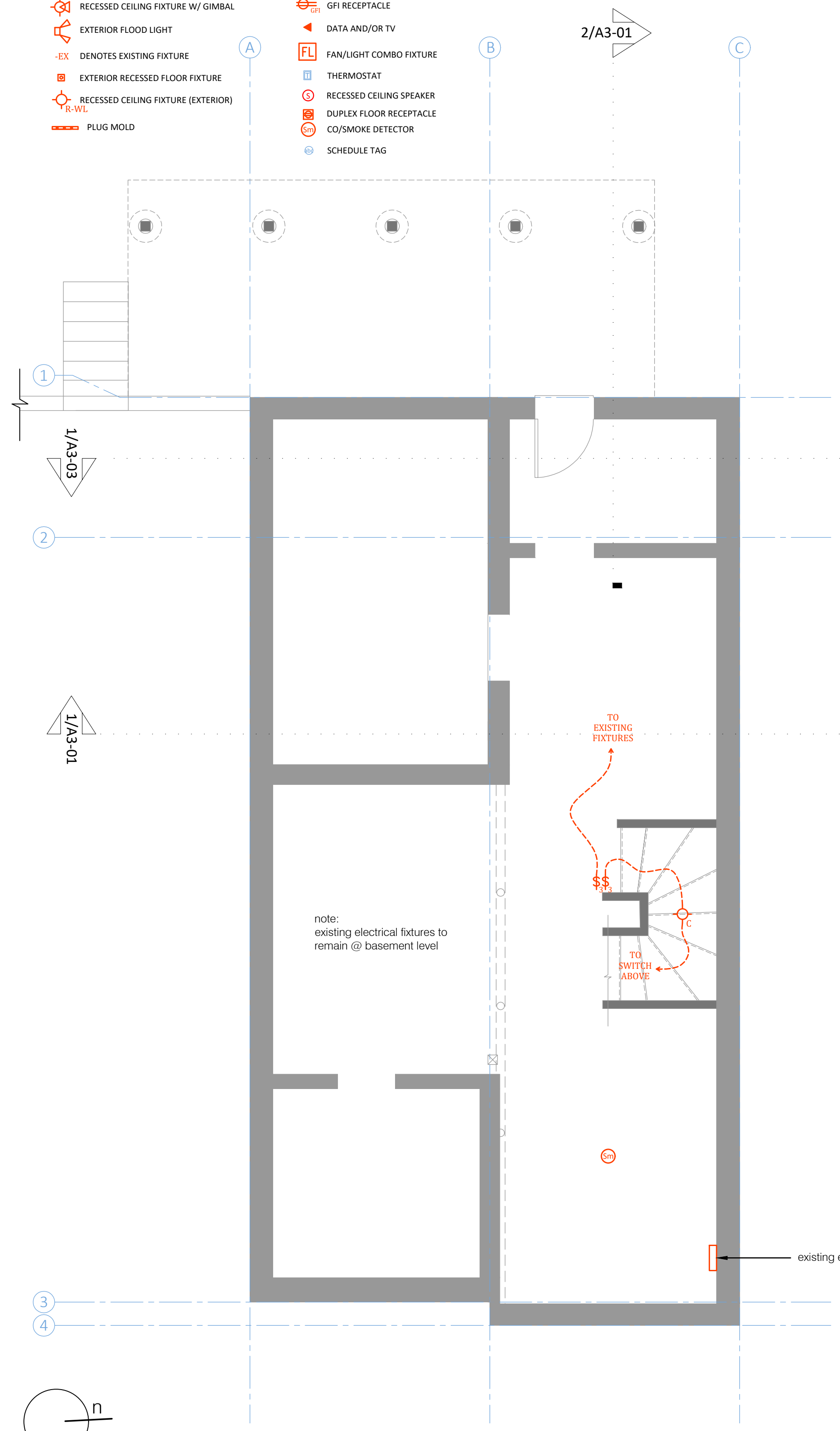
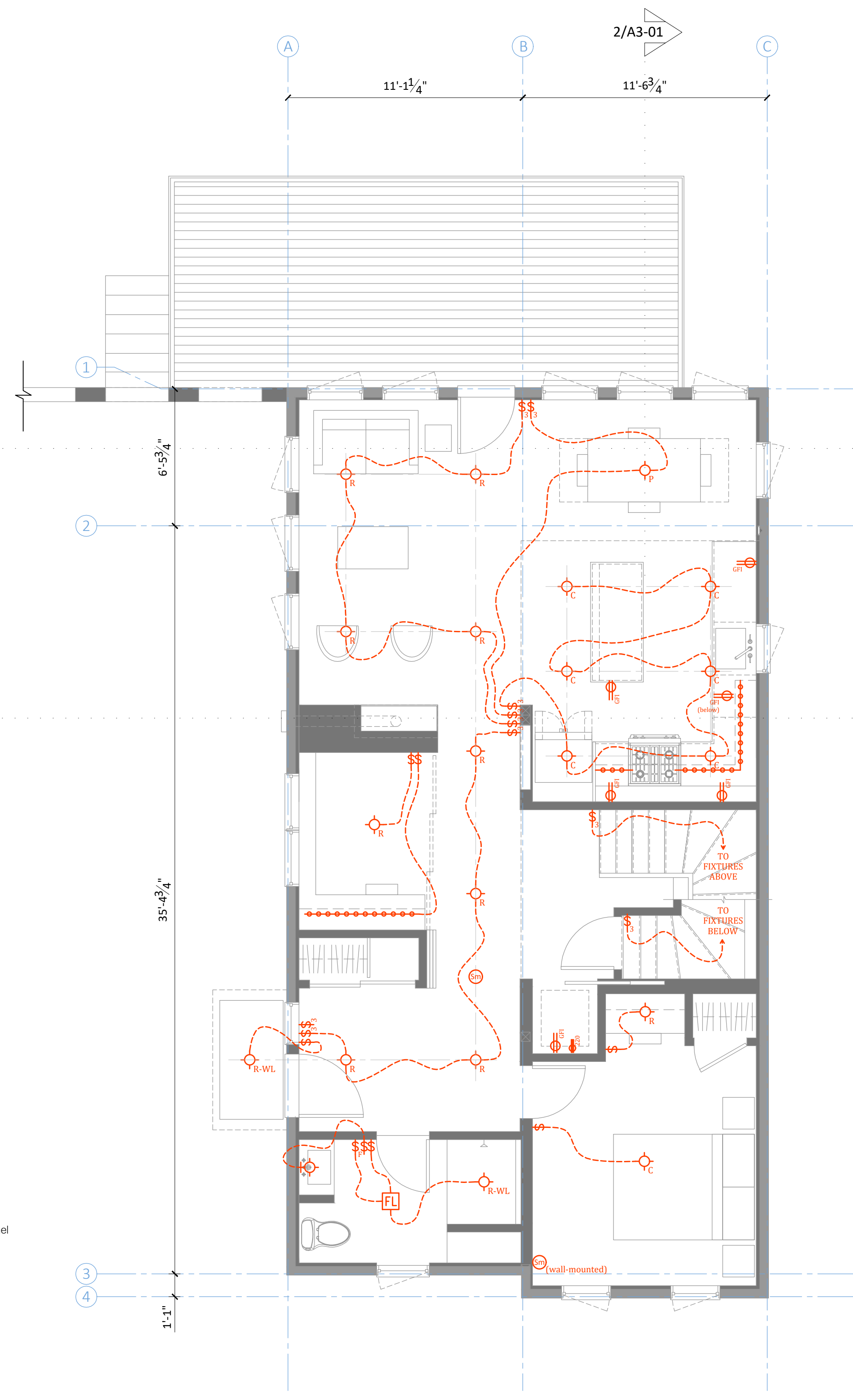


- KEY**
SEE LIGHTING SCHEDULE FOR MORE INFORMATION
- RECESSED CEILING FIXTURE
 - SURFACE MOUNT CEILING FIXTURE
 - PENDANT FIXTURE
 - WALL SCONCE
 - POST LIGHT
 - CABLE TRACK LIGHTING
 - FLUORESCENT TUBE LIGHT
 - 12V LINEAR LED W/ REMOTE TRANSFORMER, 2700K
 - RECESSED CEILING FIXTURE W/ GIMBAL
 - EXTERIOR FLOOD LIGHT
 - DENOTES EXISTING FIXTURE
 - EXTERIOR RECESSED FLOOR FIXTURE
 - RECESSED CEILING FIXTURE (EXTERIOR)
 - PLUG MOLD
 - WALL SWITCH
 - DIMMER SWITCH
 - 3-WAY WALL SWITCH
 - 4-WAY WALL SWITCH
 - FAN SWITCH
 - JAMB SWITCH
 - DUPLEX RECEPTACLE
 - SWITCHED RECEPTACLE
 - 220 VOLT RECEPTACLE
 - GFI RECEPTACLE
 - DATA AND/OR TV
 - FAN/LIGHT COMBO FIXTURE
 - THERMOSTAT
 - RECESSED CEILING SPEAKER
 - DUPLEX FLOOR RECEPTACLE
 - CO/SMOKE DETECTOR
 - SCHEDULE TAG

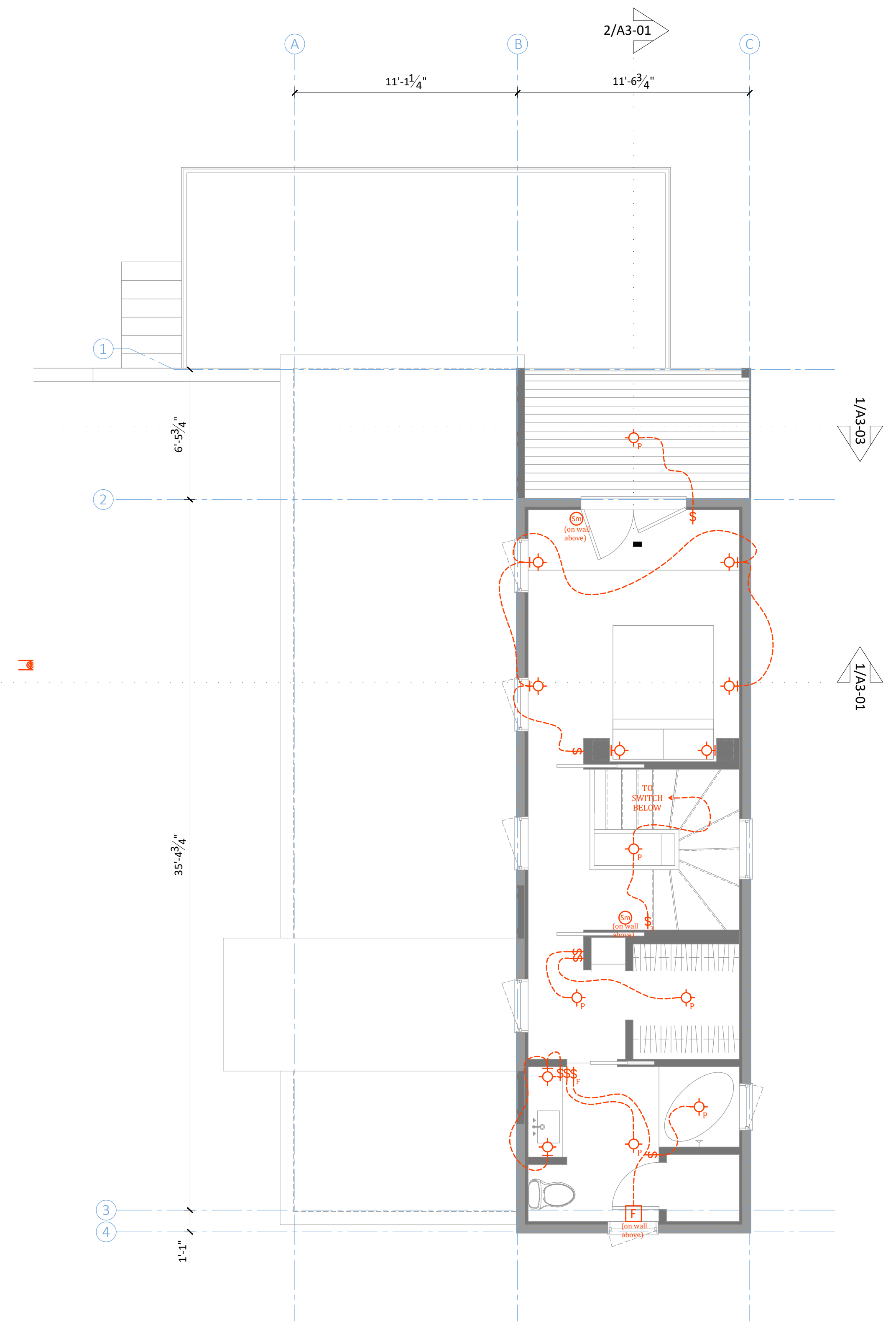
- NOTES:**
1. ELECTRICAL CONTRACTOR TO SCHEDULE ON-SITE REVIEW OF PROJECT PRIOR TO ROUGH-IN.
 2. DIMMER SWITCHES TO BE CONFIRMED WITH OWNERS UPON ROUGH-IN.
 3. CENTER SWITCHES AT 42" AFF UNLESS OTHERWISE NOTED.
 4. CENTER OUTLETS AT 12" AFF UNLESS OTHERWISE NOTED.
 5. OUTLETS TO BE INSTALLED PER PLANS, ADD OUTLETS AS REQ'D BY CODE.
 6. SMOKE DETECTORS/CO TO CODE.
 7. PROVIDE POWER IN ATTIC NEAR RADON VENT STACK FOR POTENTIAL EXHAUST FAN.
 8. NO MORE THAN 4 SWITCHES GANGED IN ONE BOX. IF MORE THAN 4 SWITCHES ARE REQUIRED, STACK 2 BOXES ABOVE ONE ANOTHER WITH EQUAL NUMBER OF SWITCHES IN EACH BOX. USE DUMMY SWITCH IF NECESSARY.
 9. BATH FAN/LIGHTS TO BE PANASONIC WHISPER LIGHT UNITS, FANS TO BE ON TIMER SWITCHES.
 10. COMMUNICATION: TBD



1 basement electrical plan
1/4" = 1'-0"



2 first floor electrical plan
1/4" = 1'-0"



3 second floor electrical plan
1/4" = 1'-0"

