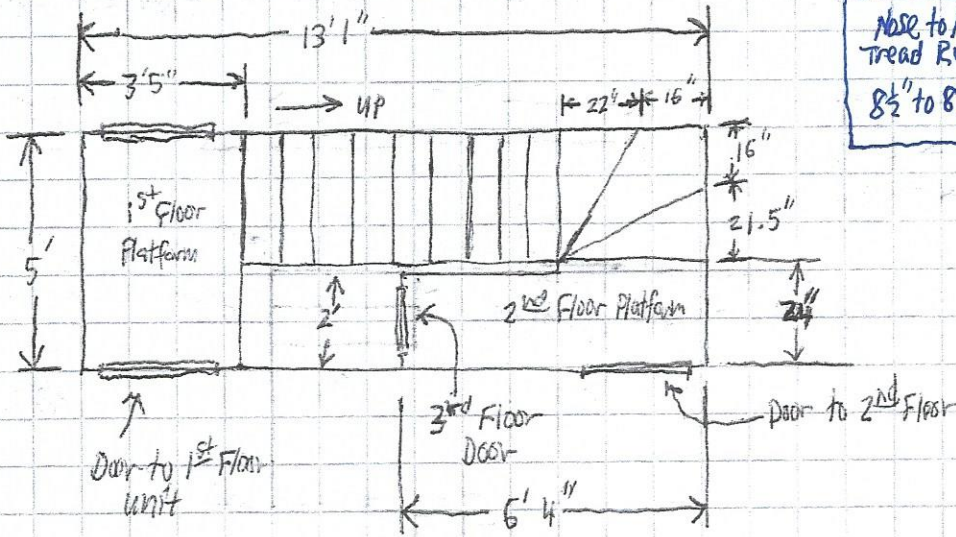


27 Greenleaf Street

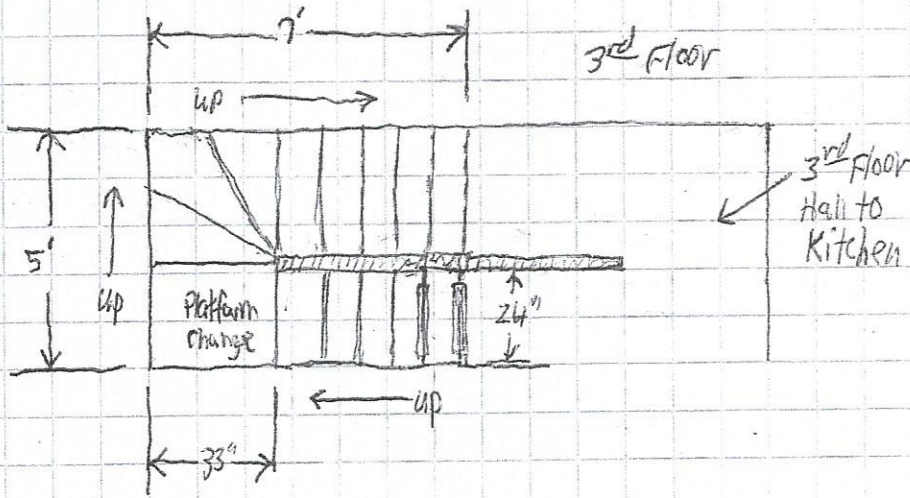
Back Stairway 1st to 2nd Floor



All Treads
Nose to Nose
Tread Run
8 1/2" to 8 3/4"

- 9 - Treads
- 3 - Winders
- 9 1/4" to 9 1/2" Run
- 8 1/4" to 8 3/4" Rise
- 34" wide Treads

Note: Just New Treads on 1st to Second Floor



- 10 - Treads
- 3 - Winders
- 1 - Platform

* Note: We are Not Changing Treads from 2nd Floor to 3rd Floor we are only Changing wood on the 33" x 33" Platform

- * Note: Handrail Heights = 36"
- Guard Height = 42"
- Baluster Spacing = 4.0" O.C.
- Nose to Nose Tread Run = 8 1/2" to 8 3/4" (Existing Stair Structure)
- Riser Height = 8 1/4" to 8 3/4" (Existing Stair Structure)
- Nose Projection of Tread = 3/4"
- Stair Width = 32" to 34"

Scale 1/4" = 1'