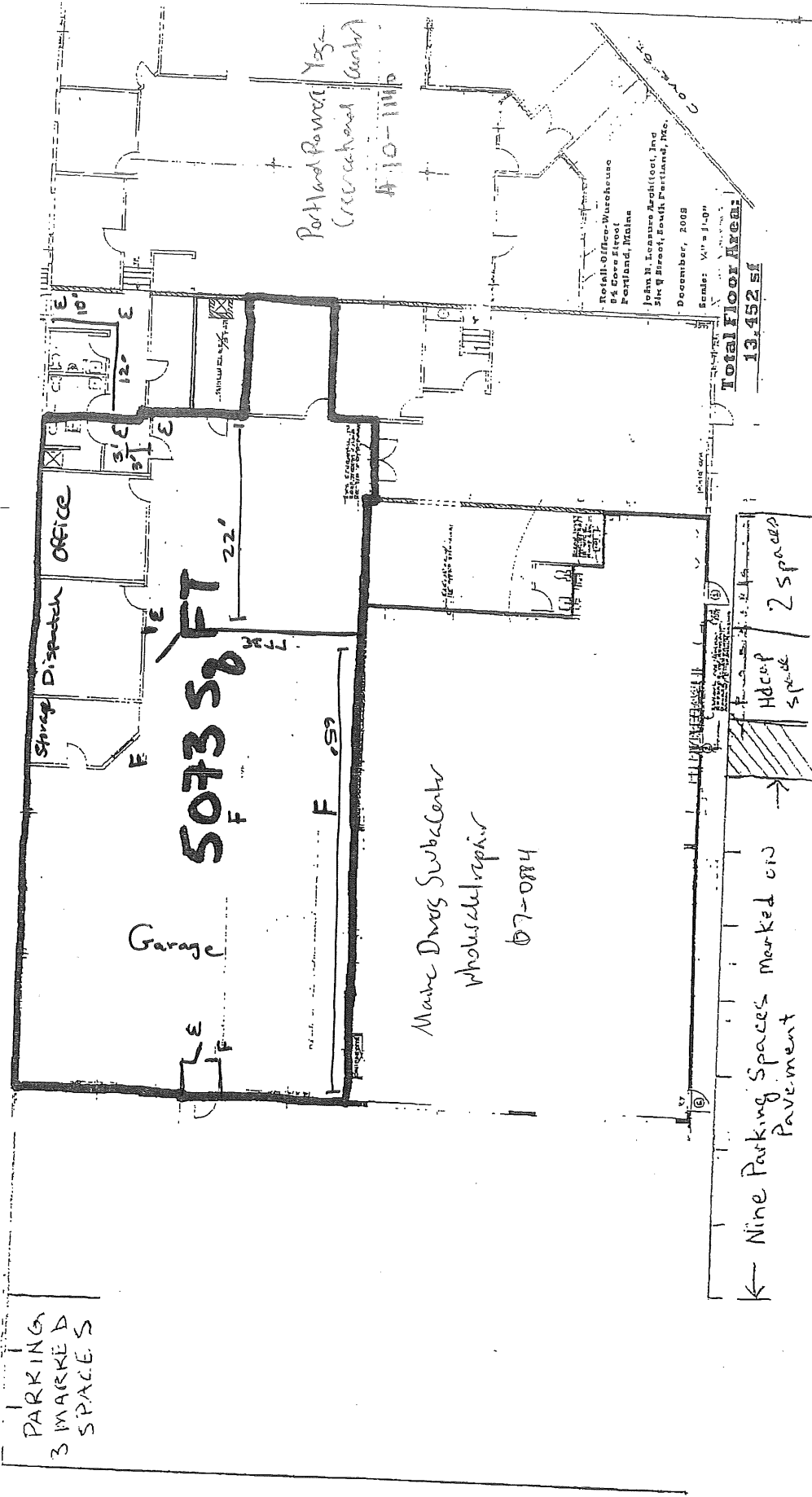


PARKING  
3 MARKED  
SPACES



Portland Power Yrs-  
(re-released work)  
#10-1110

Total Office-Warehouse  
5 1/2 Core Street  
Portland, Maine  
John H. Looney Architect, Inc.  
516 W Street, South Portland, Me.  
December, 2008  
Scale: 1/4" = 1'-0"

Total Floor Area:  
13,452 sq ft

Not to Scale

84 Core St (72)

10-H-007-027

Marked on Pavement

