

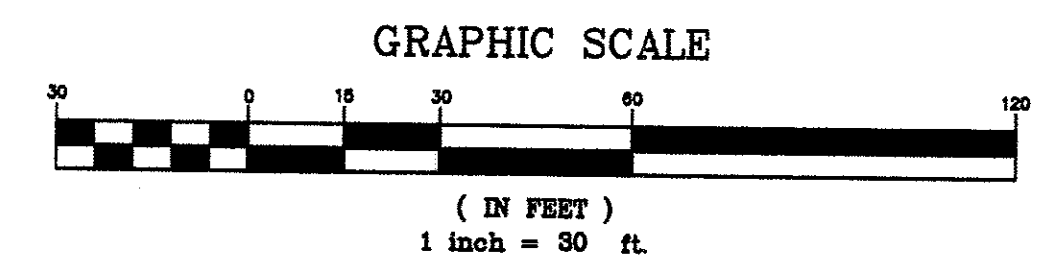
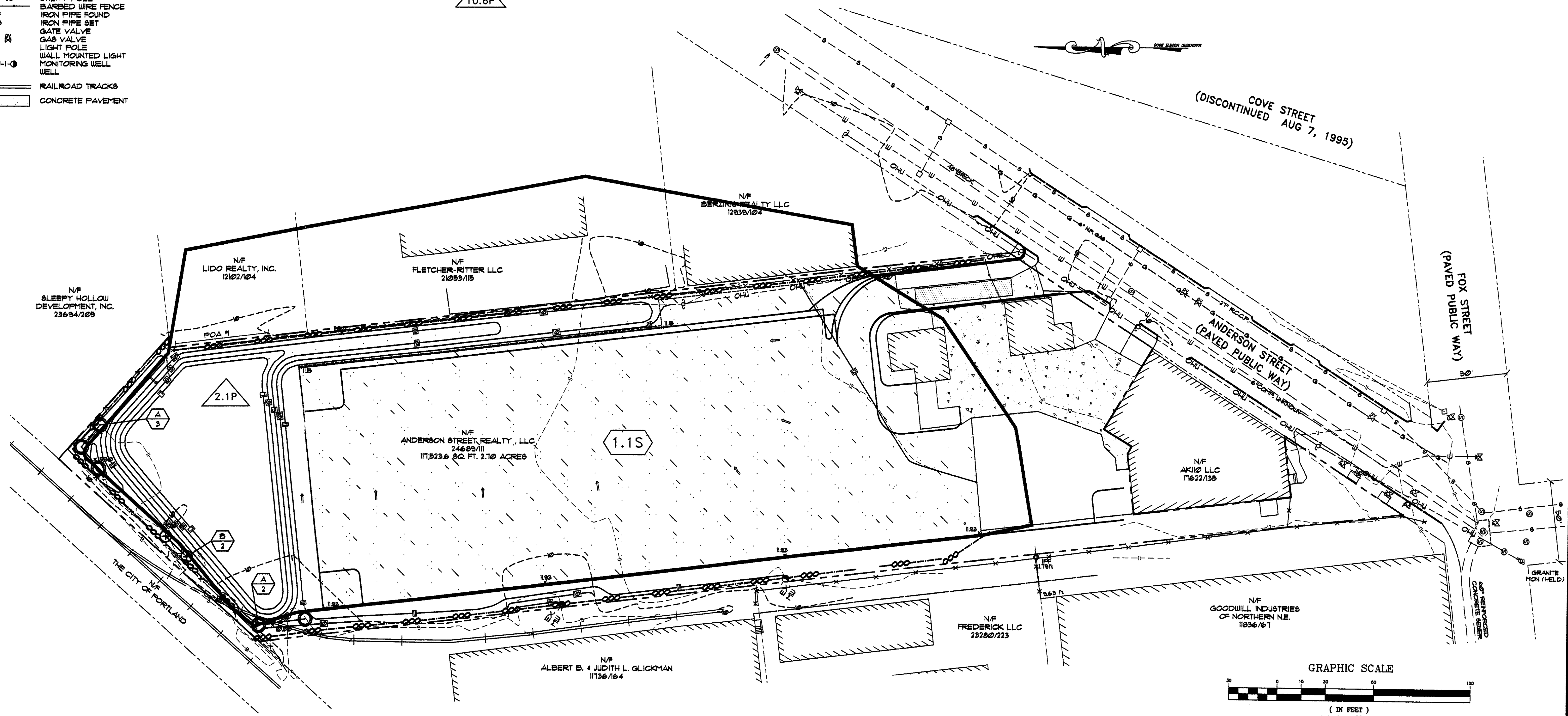
LEGEND

- EXISTING**
- PROPERTY LINE
 - - - ABUTTERS PROPERTY
 - - - EDGE OF PAVEMENT
 - - - CONTOURS
 - ▨ BUILDING
 - ▧ CURB
 - GAS LINE
 - SANITARY SEWER
 - OVERHEAD UTILITY
 - WATER LINE
 - CATCH BASIN
 - SEWER MANHOLE
 - UTILITY POLE
 - ▧ BARBED WIRE FENCE
 - IRON PIPE FOUND
 - IRON PIPE SET
 - GATE VALVE
 - GAS VALVE
 - LIGHT POLE
 - WALL MOUNTED LIGHT
 - MONITORING WELL
 - WELL
 - RAILROAD TRACKS
 - ▨ CONCRETE PAVEMENT

- PROPOSED**
- - - EDGE OF GRAVEL/ PROPOSED PAVEMENT
 - - - VERTICAL GRANITE CURB
 - - - CONTOURS
 - - - LIGHT POLE
 - - - SIGN
 - - - SURFACE DRAINAGE
 - - - SILT FENCE
 - PLANTS

DRAINAGE LEGEND

- SUBCATCHMENT PERIMETER
- SUBCATCHMENT NUMBER
- POA #1
- △ 10.6P
- △ 10.0S
- POINT OF ANALYSIS
- △ TIME OF CONCENTRATION (T_c PATH)
- POND



2	2/21/08	REV'D PER REVIEW COMMENTS
1	12/21/07	REV'D PER REVIEW COMMENTS
REV.	DATE	DESCRIPTION
<p>CARDENTE REAL ESTATE 299 FOREST AVENUE, PORTLAND MAINE 122 ANDERSON STREET PORTLAND MAINE PINKHAM & GREER</p>		
<p>DRAINAGE ANALYSIS DEVELOPED CONDITION</p>		
SCALE:	AS SHOWN	DRN BY: DPD
DATE:	SEPTEMBER 25, 2007	DESG BY: JTR
PROJECT:	07147	CHK BY: JTR
		D1.1