

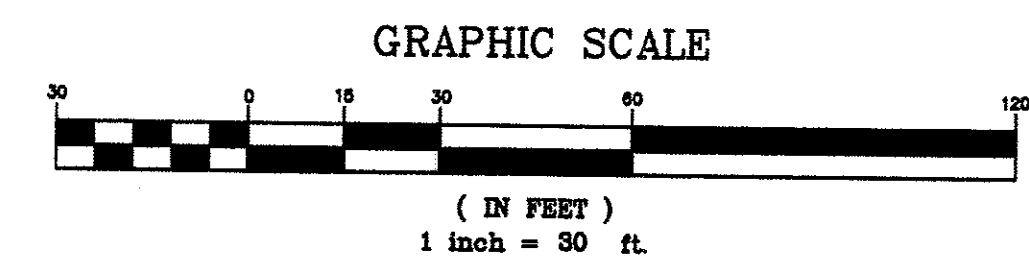
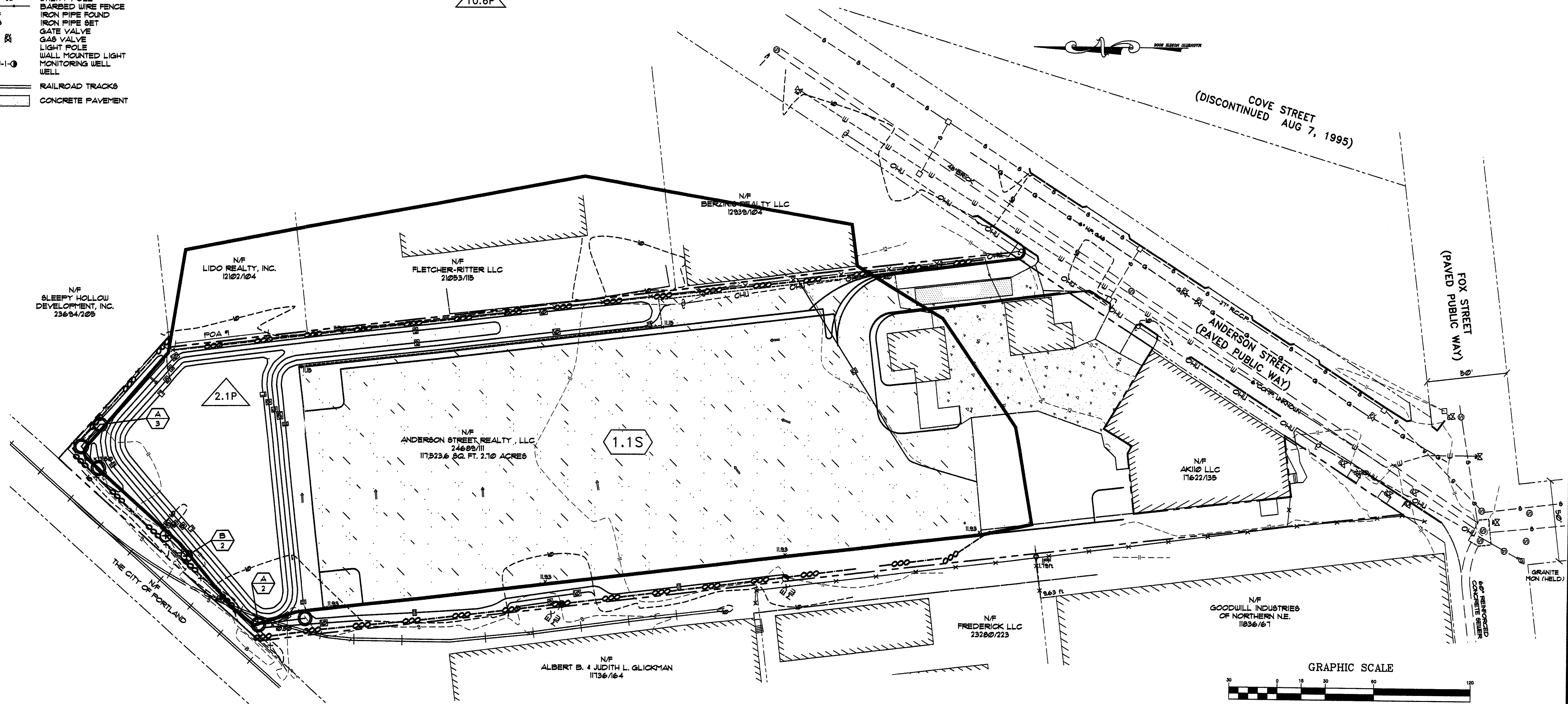
**LEGEND**

- EXISTING**
- PROPERTY LINE
  - - - - - ABUTTERS PROPERTY
  - - - - - EDGE OF PAVEMENT
  - - - - - CONTOURS
  - ▧ BUILDING
  - ▧ CURB
  - GAS LINE
  - SANITARY SEWER
  - OVERHEAD UTILITY
  - WATER LINE
  - CATCH BASIN
  - SEWER MANHOLE
  - UTILITY POLE
  - BARBED WIRE FENCE
  - IRON PIPE FOUND
  - IRON PIPE SET
  - GATE VALVE
  - GAS VALVE
  - LIGHT POLE
  - WALL MOUNTED LIGHT
  - MONITORING WELL
  - WELL
  - RAILROAD TRACKS
  - CONCRETE PAVEMENT

- PROPOSED**
- EDGE OF GRAVEL/ PROPOSED PAVEMENT
  - VERTICAL GRANITE CURB
  - CONTOURS
  - LIGHT POLE
  - SIGN
  - SURFACE DRAINAGE
  - SILT FENCE
  - PLANTS

**DRAINAGE LEGEND**

- SUBCATCHMENT PERIMETER
- SUBCATCHMENT NUMBER
- POA #1
- △ 10.6P
- △ 10.0S
- POINT OF ANALYSIS
- △ TIME OF CONCENTRATION (Tc PATH)
- POND



|          |                    |          |  |
|----------|--------------------|----------|--|
|          | 2                  | 2/21/08  | REV'D PER REVIEW COMMENTS  |
|          | 1                  | 12/21/07 | REV'D PER REVIEW COMMENTS  |
|          | REV.               | DATE     | DESCRIPTION  |
|          |                    |          | CARDENTE REAL ESTATE<br>299 FOREST AVENUE, PORTLAND MAINE<br>122 ANDERSON STREET<br>PORTLAND MAINE<br>DRAINAGE ANALYSIS<br>DEVELOPED CONDITION |
| SCALE:   | AS SHOWN           | DRN BY:  | DPD  |
| DATE:    | SEPTEMBER 25, 2007 | DESG BY: | JTR  |
| PROJECT: | 07147              | CHK BY:  | JR   |
|          |                    |          | D1.1   |