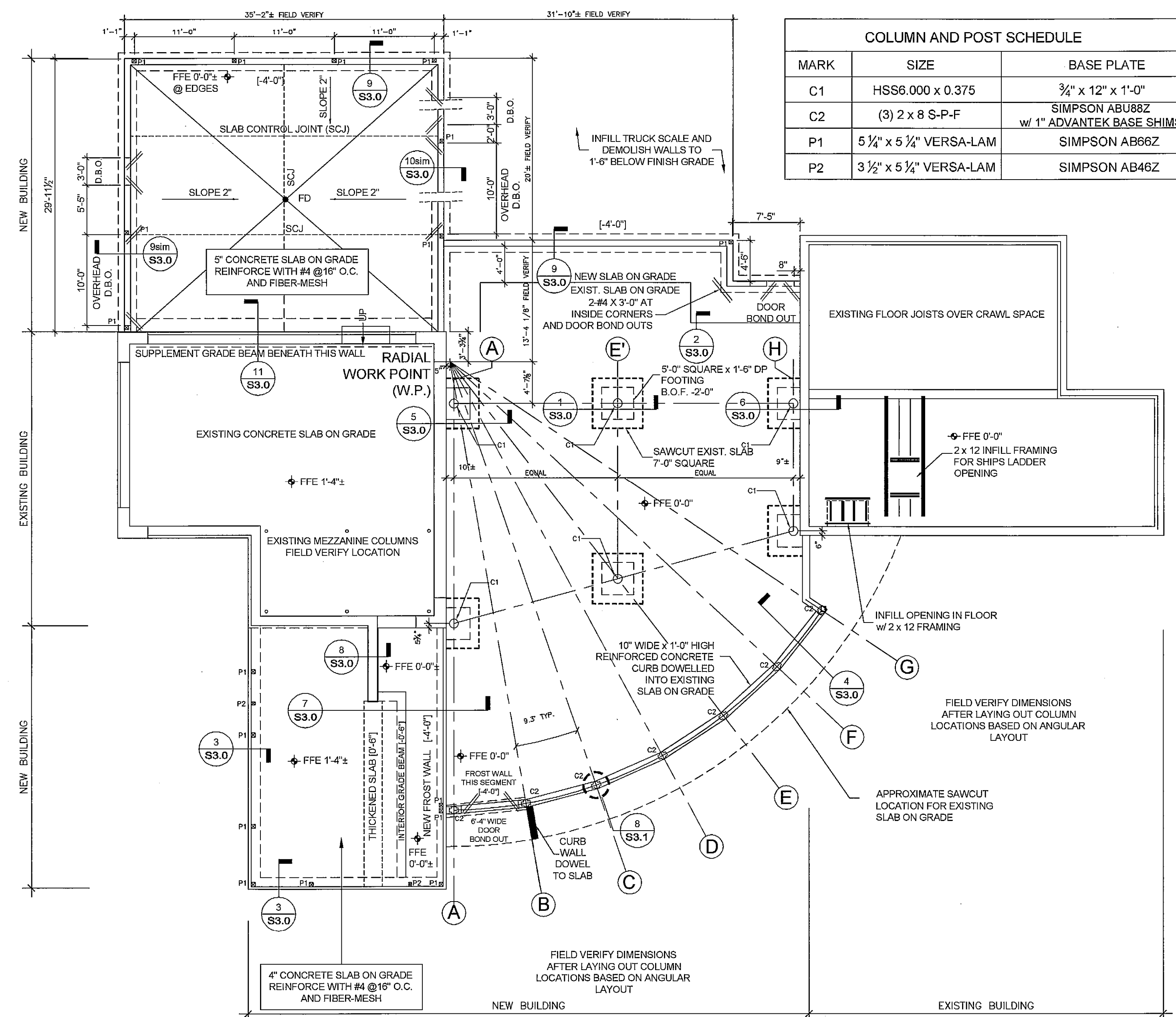


**2 PART PLAN - ENLARGED RADIAL WALL PLAN**  
 1/4" = 1'-0"

NOTES:

- REFER TO MAIN FOUNDATION PLAN FOR CALLOUTS NOT SHOWN.
- W.P. INDICATES WORK POINT FOR LAYING OUT RADIAL COLUMN GRID.
- ESTABLISH POST LOCATIONS BY LAYING OUT RADIAL LINE FROM WORK POINT AND ROTATING ANGLES INDICATED. STRING FROM POST CENTERPOINT TO POST CENTERPOINT.
- LAY OUT FOUNDATION SEGMENTS BY OFFSETTING COLUMN CENTER POINTS 5 INCHES INBOARD AND OUTBOARD.

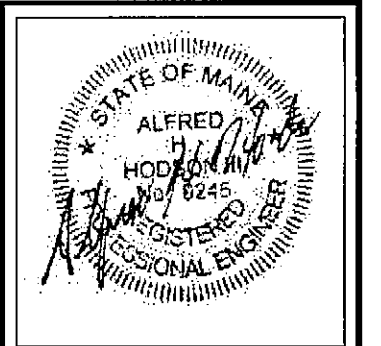


COLUMN AND POST SCHEDULE		
MARK	SIZE	BASE PLATE
C1	HSS6.000 x 0.375	3/4" x 12" x 1'-0"
C2	(3) 2 x 8 S-P-F	SIMPSON ABU88Z w/ 1" ADVANTEK BASE SHIMS
P1	5 1/2" x 5 1/4" VERSA-LAM	SIMPSON AB66Z
P2	3 1/2" x 5 1/4" VERSA-LAM	SIMPSON AB46Z

**1 FIRST FLOOR STRUCTURAL PLAN**  
 1/8" = 1'-0"

NOTES:

- [-4'-0"] INDICATES BOTTOM OF FOOTING ELEVATION.
- REFER TO SCHEDULE ON THIS SHEET FOR COLUMN AND POST SIZES.
- W.P. INDICATES WORK POINT FOR LAYING OUT RADIAL COLUMN GRID.
- D.B.O. INDICATES SLAB BOND-OUT AT DOOR OPENINGS.



© 2006 TFH ARCHITECTS

**ANDERSON STREET CONDOMINIUM**  
 FOR  
 WILLIAM P. SIMPSON

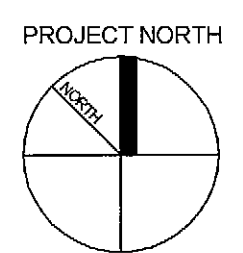
**TFH ARCHITECTS**  
 100 COMMERCIAL STREET  
 PORTLAND, MAINE 04101  
 TELEPHONE 207 775 6141  
 ARCHITECTURE PLANNING

CONSULTANTS:  
**RESURGENCE**  
 ENGINEERING AND RESTORATION, INC.  
 132 BIRCHWOOD STREET  
 PORTLAND, ME 04103  
 1/2" (207) 775-4800  
 RESURGENCE@VERIZON.NET

REVISIONS:

DATE: 9-6-06 - PERMIT  
 PROJECT No: 06-014  
 DRAWN BY: AHH  
 CHECKED BY: AHH  
 SCALE: AS NOTED

SHEET TITLE:  
 Foundation and  
 First Floor Plan



**S1.0**