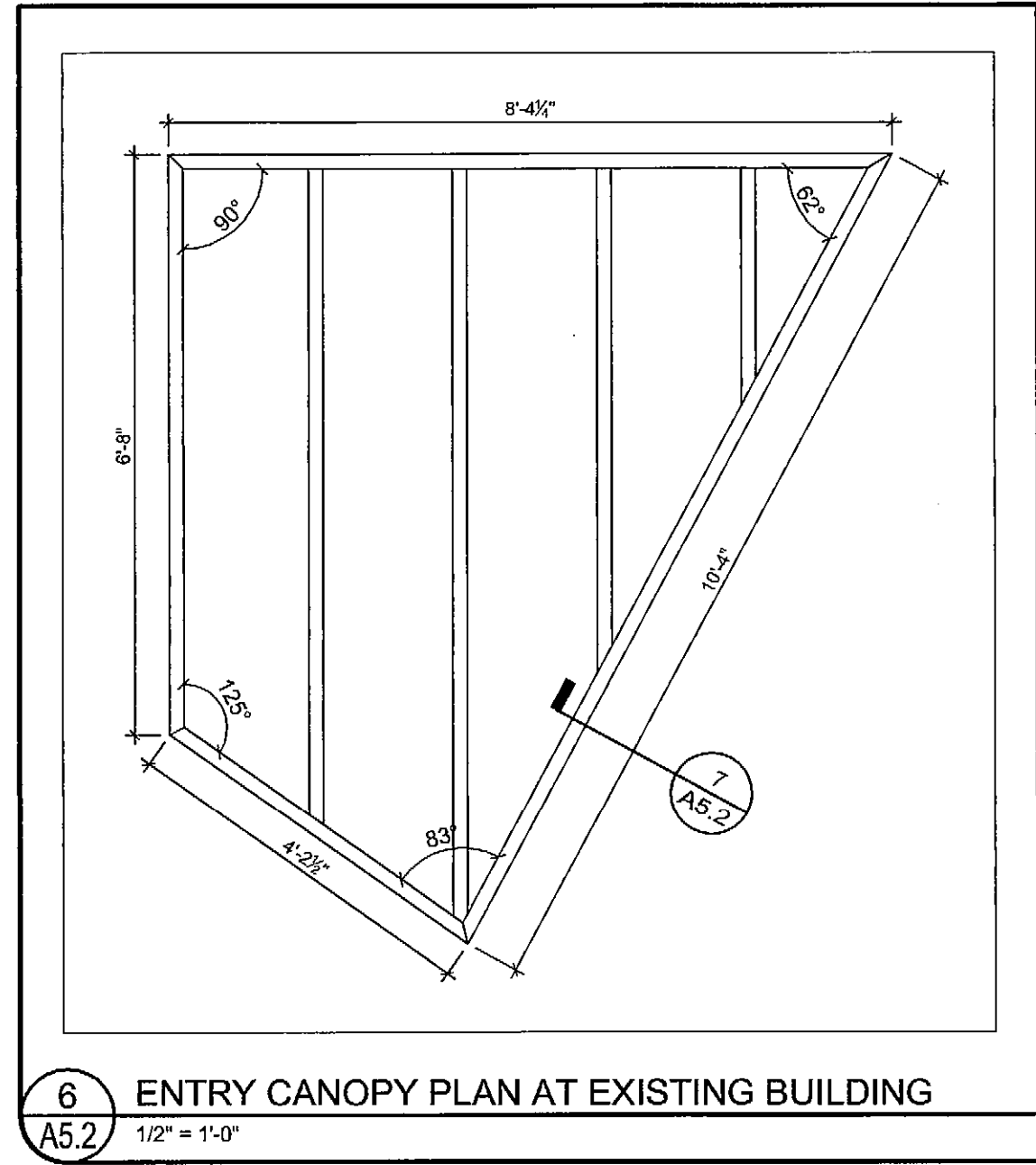
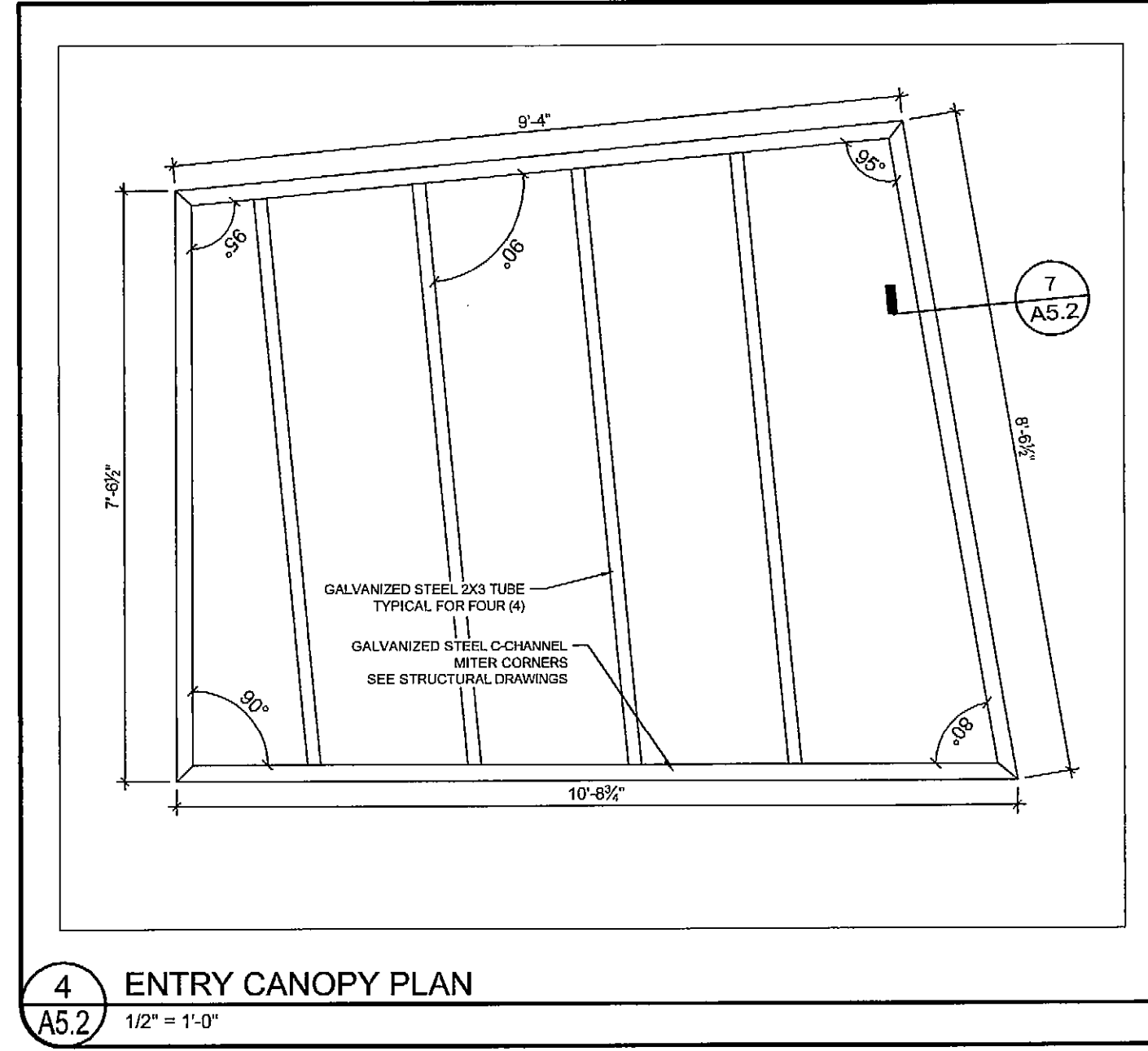


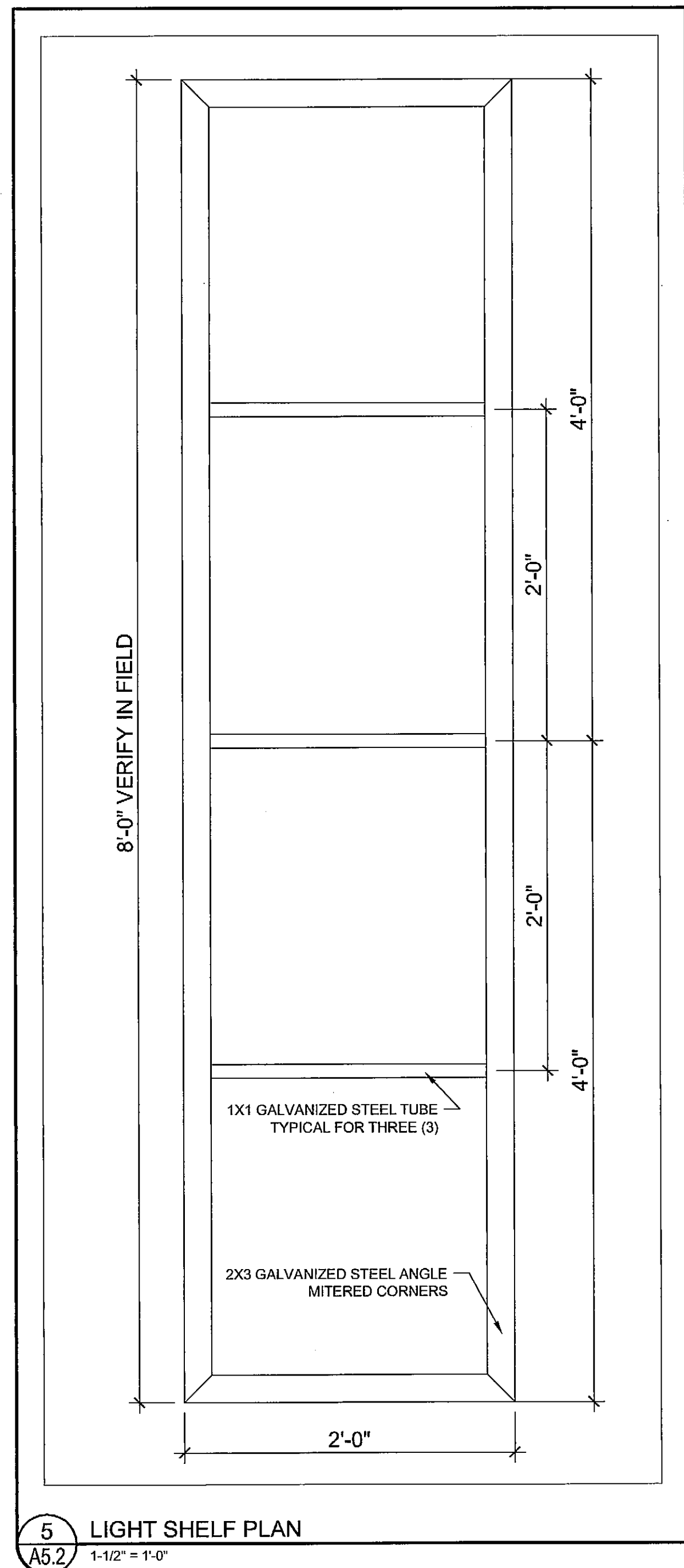
7 ENTRY CANOPY SECTION DETAIL
3" = 1'-0"



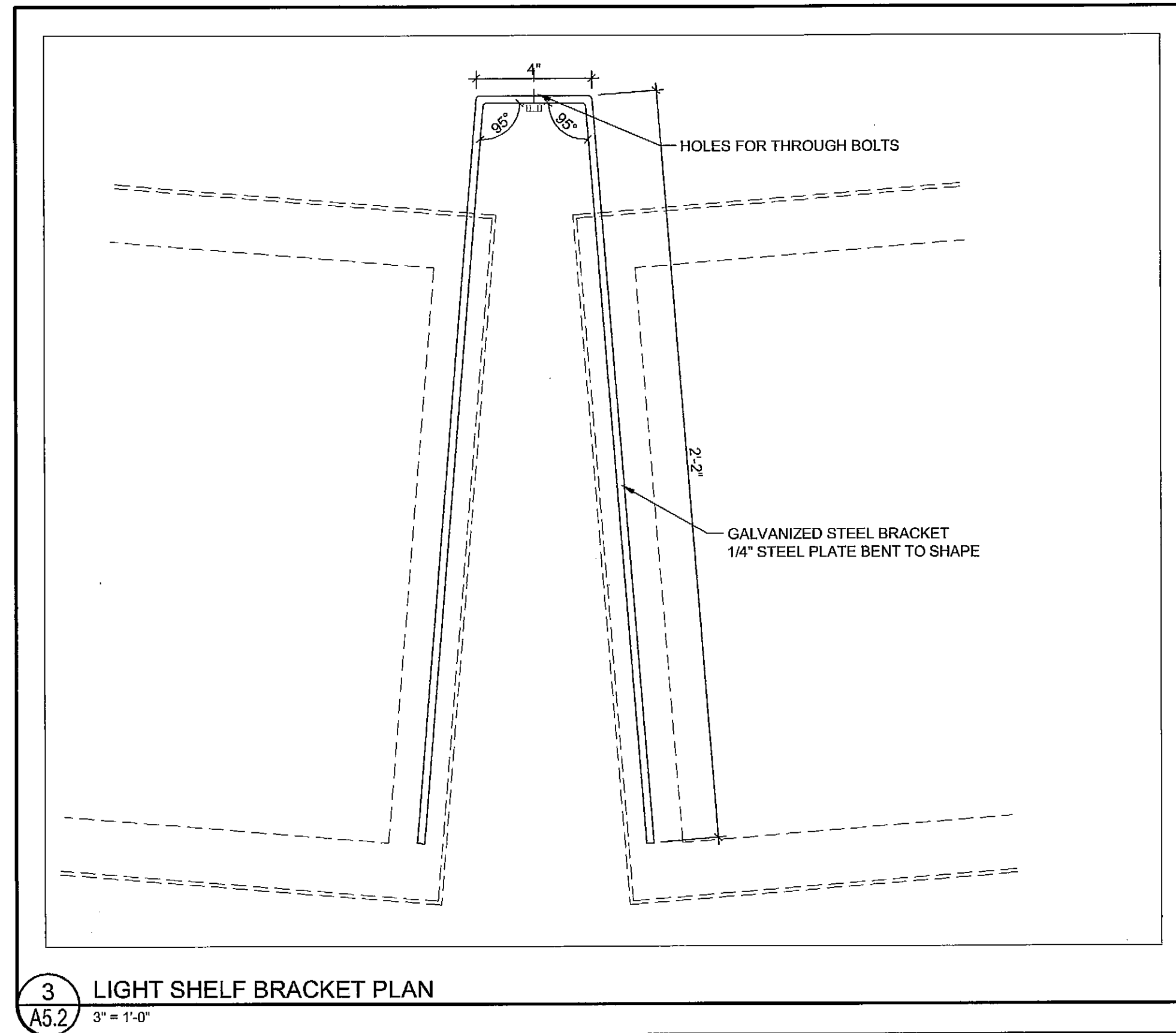
6 ENTRY CANOPY PLAN AT EXISTING BUILDING
1/2" = 1'-0"



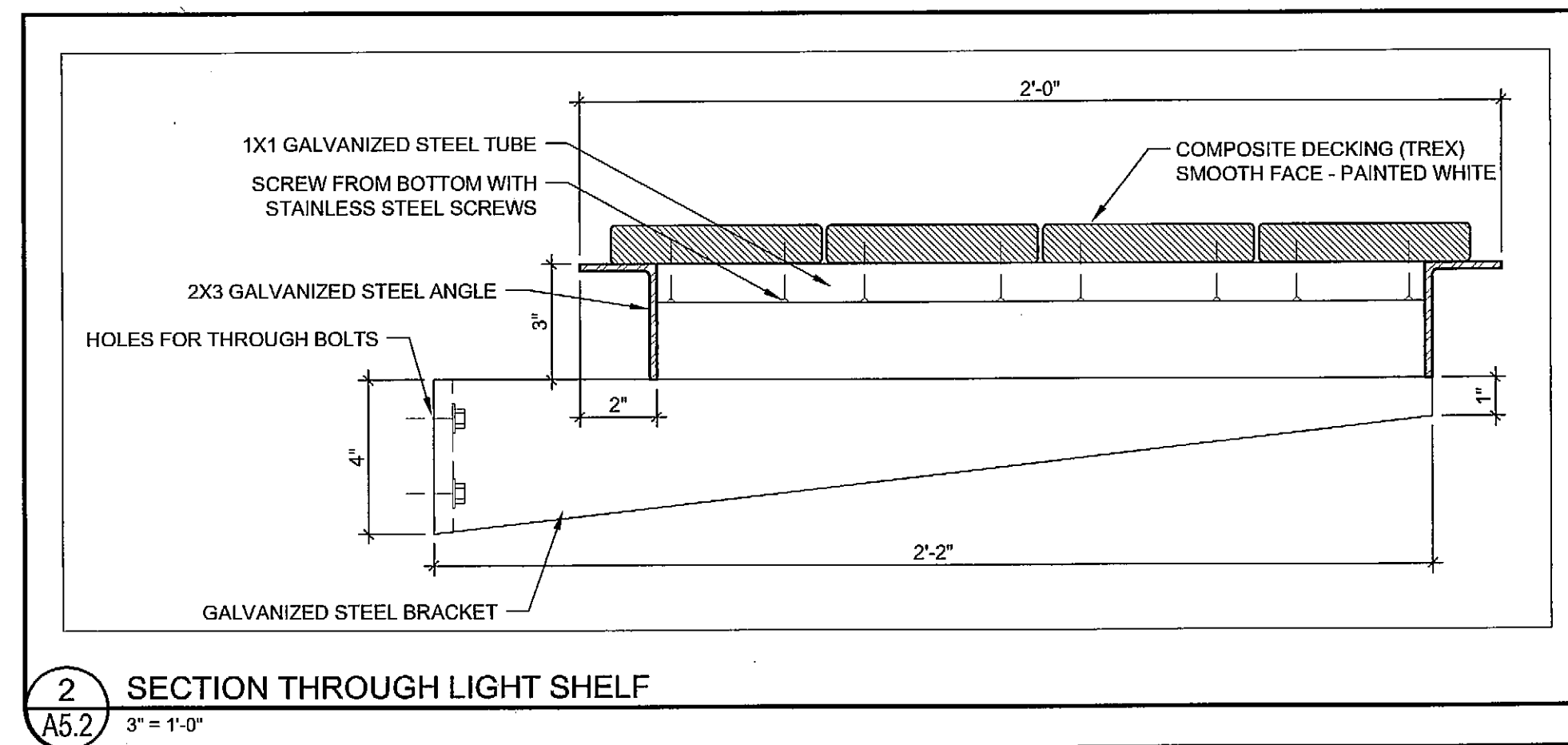
4 ENTRY CANOPY PLAN
1/2" = 1'-0"



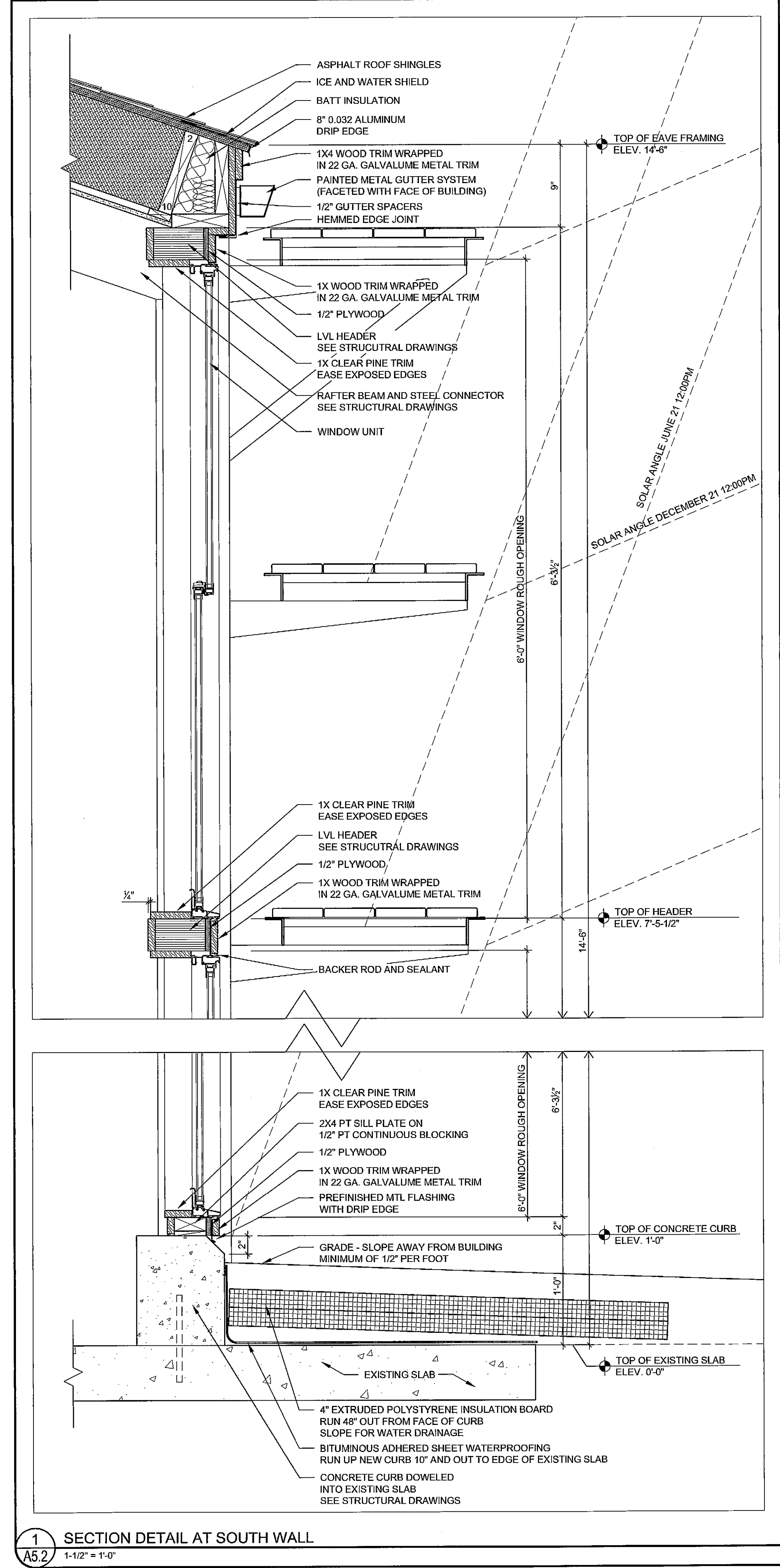
5 LIGHT SHELF PLAN
1-1/2" = 1'-0"



3 LIGHT SHELF BRACKET PLAN
3" = 1'-0"



2 SECTION THROUGH LIGHT SHELF
3" = 1'-0"

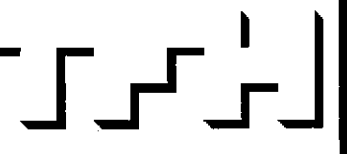


1 SECTION DETAIL AT SOUTH WALL
1-1/2" = 1'-0"



© 2006 TFH ARCHITECTS

ANDERSON STREET INDUSTRIAL CONDOMINIUM
FOR
WILLIAM P. SIMPSON



TFH ARCHITECTS
100 COMMERCIAL STREET
PORTLAND, MAINE 04101
TELEPHONE 207 775 6141
ARCHITECTURE PLANNING

CONSULTANTS:

REVISIONS:

DATE: 08/30/06
PROJECT No. 0504
DRAWN BY: RJS
CHECKED BY: TST
SCALE: AS NOTED

SHEET TITLE:
DETAILS

A5.2