

© 2006 TFH ARCHITECTS

ANDERSON STREET CONDOMINIUM
FOR
WILLIAM P. SIMPSON

TFH ARCHITECTS
100 COMMERCIAL STREET
PORTLAND MAINE 04101
TELEPHONE 207 775 6141
ARCHITECTURE PLANNING

CONSULTANTS:

REVISIONS:

DATE: 08/30/06

PROJECT No. 0504

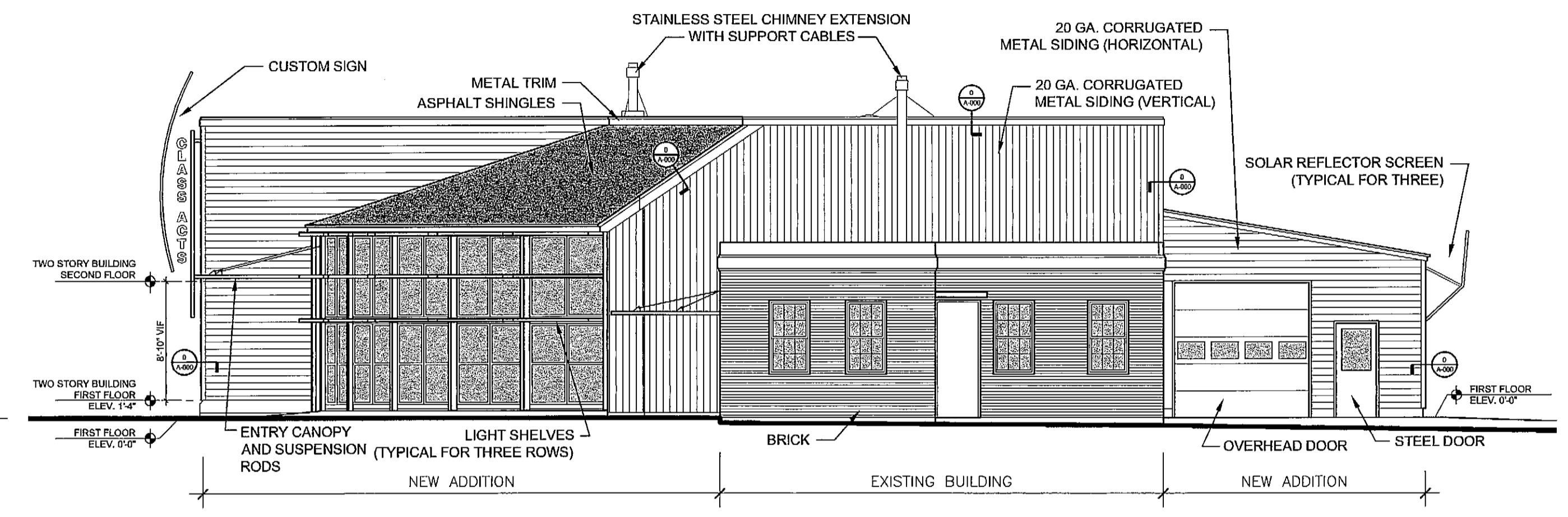
DRAWN BY: RJS

CHECKED BY: TST

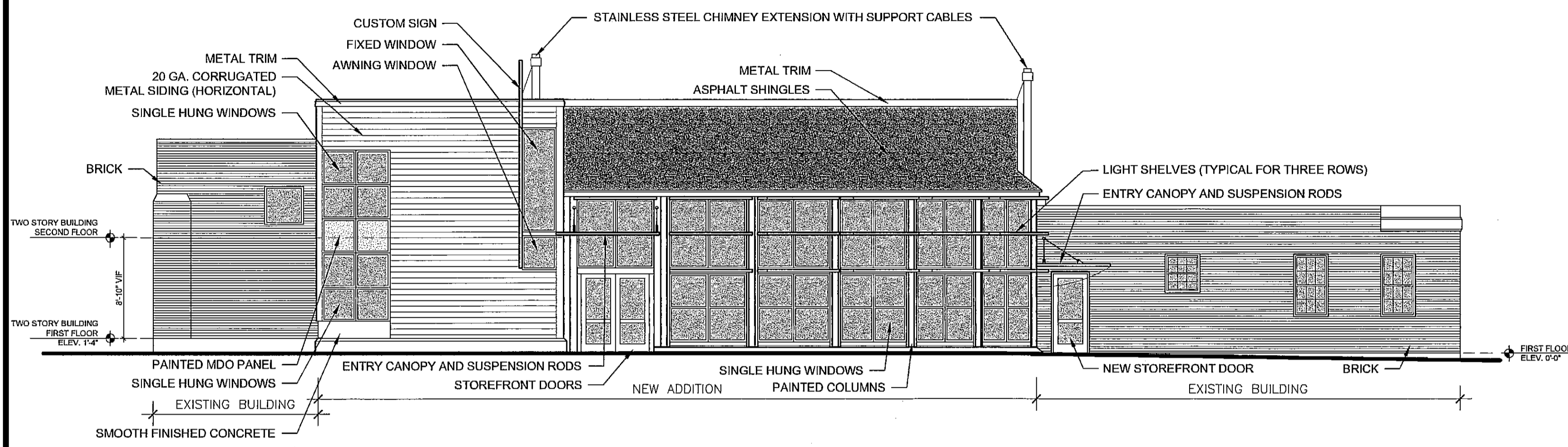
SCALE: AS NOTED

SHEET TITLE:
Addition Building Elevations

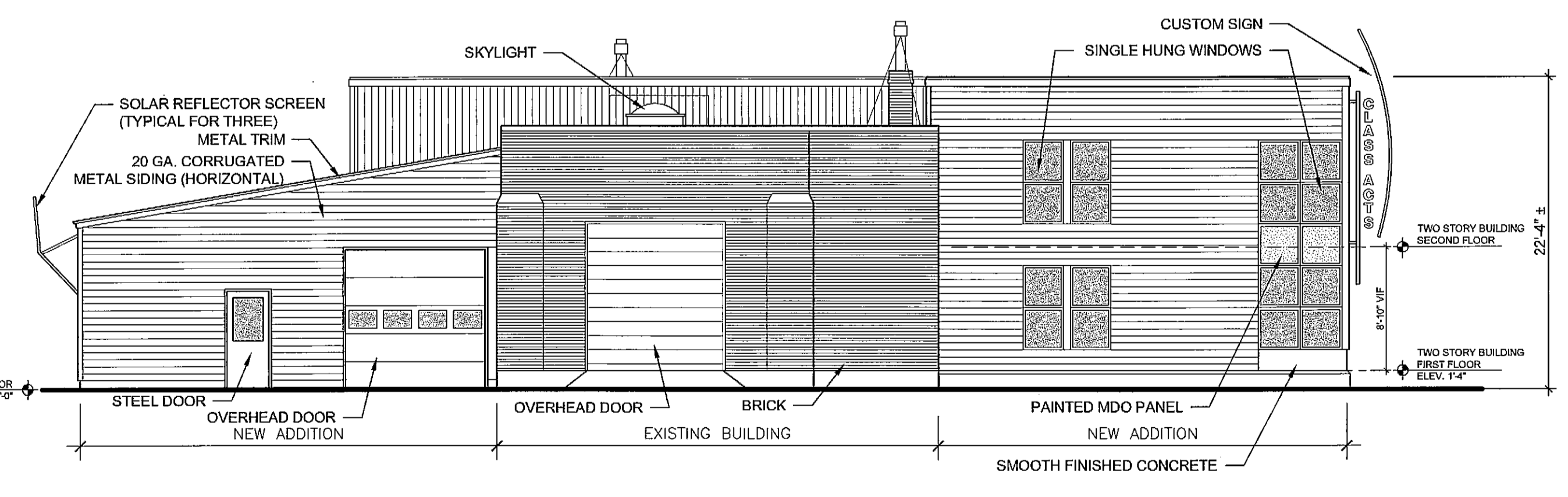
A2.0



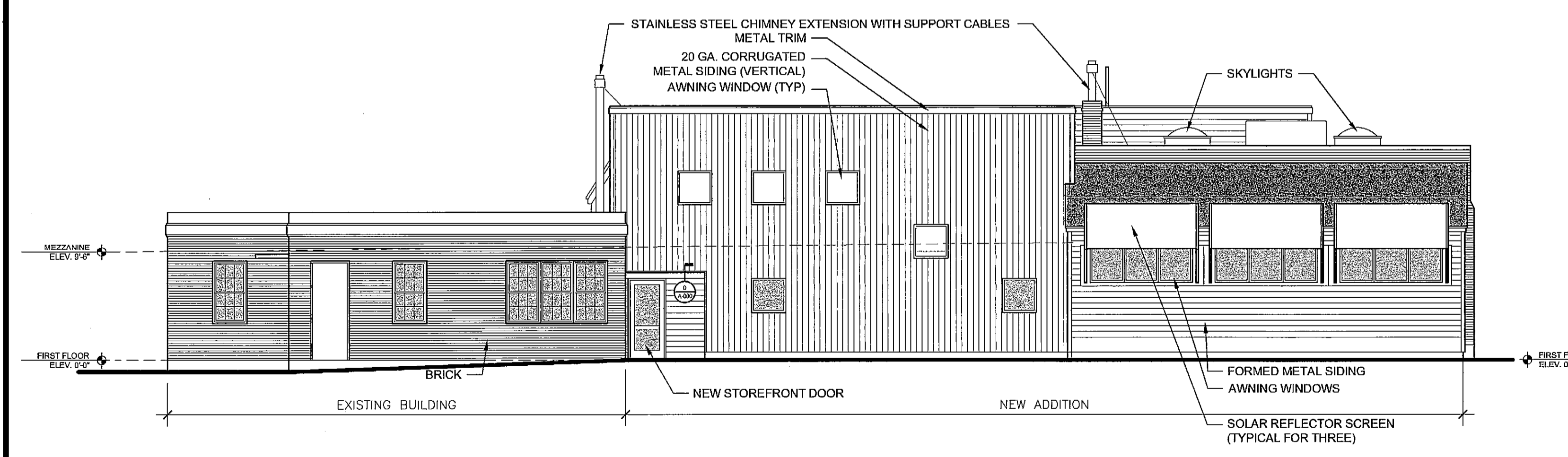
2 EAST ELEVATION
A2.0 1/8" = 1'-0"



4 SOUTH ELEVATION
A2.0 1/8" = 1'-0"



1 WEST ELEVATION
A2.0 1/8" = 1'-0"



3 NORTH ELEVATION
A2.0 1/8" = 1'-0"