

© 2006 TFH ARCHITECTS

ANDERSON STREET CONDOMINIUM
FOR
WILLIAM P. SIMPSON

TFH ARCHITECTS
100 COMMERCIAL STREET
PORTLAND MAINE 04101
TELEPHONE 207 775 6141
ARCHITECTURE PLANNING

CONSULTANTS:

REVISIONS:

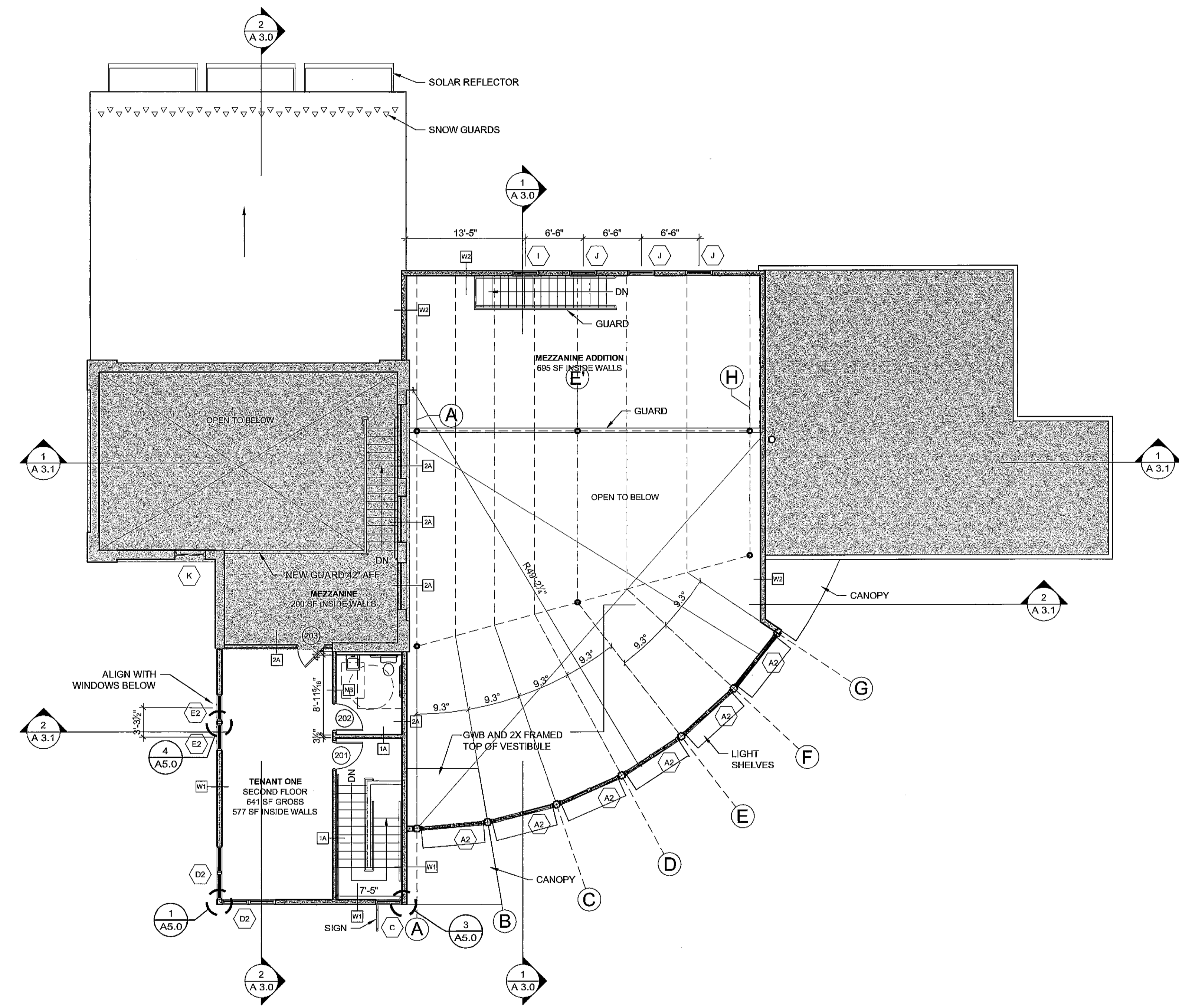
DATE:	08/30/06
PROJECT No.	0504
DRAWN BY:	RJS
CHECKED BY:	TST
SCALE:	AS NOTED
SHEET TITLE:	Second Floor Plan

A1.1

EXTERIOR WALL TYPES	
KEY	STC
W1	2" X 1/4" MARINE PLYWOOD STRIPS AT 32" O.C. 20 GA. METAL SIDING (HORIZONTAL) TYVEK WEATHER BARRIER 5/8" EXTERIOR GRADE PLYWOOD SHEATHING L-2X6 WOOD STUDS AT 16" O.C. BLOWN-IN CELLULOSE INSULATION R-19 SCRIM 5/8" GYPSUM WALLBOARD R-VALUE 20
W2	20 GA. METAL SIDING (HORIZONTAL) TYVEK WEATHER BARRIER 5/8" EXTERIOR GRADE PLYWOOD SHEATHING L-2X6 WOOD STUDS AT 16" O.C. BLOWN-IN CELLULOSE INSULATION R-19 SCRIM 5/8" GYPSUM WALLBOARD R-VALUE 20

PARTITION TYPES	
NON FIRE-RATED PARTITIONS	
UNLESS OTHERWISE NOTED IN DRAWINGS THE TYPICAL WALL TYPE IS 'NA'. ALL OTHER PARTITION TYPES WILL BE INDICATED.	
KEY	STC
NA	5/8" GWB 3 1/2" STUDS (OR 5 1/2" AS INDICATED ON PLAN) @ 16" O.C. 5/8" GWB COORDINATE STUD SIZES WITH ARCHITECTURAL AND STRUCTURAL PLANS AND DETAILS.
NB	5/8" GWB 3 1/2" STUDS (OR 5 1/2" AS INDICATED ON PLAN) @ 16" O.C. 3 1/2" BATT INSUL. 5/8" GWB
1 HOUR RATED PARTITIONS	
KEY	STC
1A	5/8" TYPE-X GWB 3 1/2" (OR 5 1/2" AS INDICATED ON PLAN) STUDS 16" O.C. 3 1/2" BATT INSULATION 5/8" TYPE-X GWB. UL U305
2 HOUR RATED PARTITIONS	
KEY	STC
2A	2 LAYERS 5/8" TYPE-X GWB LAYER NAIL APPLIED TO BOTH SIDES 2 X 4 WOOD STUDS (OR 5 1/2" AS INDICATED ON PLAN) SPACED 16" O.C., BATT INSUL., 2 LAYERS 5/8" TYPE-X GWB NAIL APPLIED. UL 301 FM WP-360 GA WP-4135 40 NGC 2393

2 PARTITION TYPES
NO SCALE



1 SECOND / MEZZANINE FLOOR PLAN
1/8" = 1'-0"

