

ANDERSON STREET CONDOMINIUM

ANDERSON STREET, PORTLAND, MAINE

PERMIT SET
SEPTEMBER 27, 2006

PROJECT TEAM

ARCHITECT:

TFH Architects
100 Commercial Street
Portland, ME 04101
T (207) 775-6141

CIVIL ENGINEER:

Pinkham & Greer
170 U.S. Route One
Falmouth, ME 04105
T (207) 781-5242

STRUCTURAL ENGINEER:

Resurgence Engineering and Preservation, Inc.
132 Brentwood Street
Portland, ME 04103
T (207) 773 - 4880

CODE SUMMARY

BUILDING DESIGN CODES:

INTERNATIONAL BUILDING CODE 2003
AMERICANS WITH DISABILITIES ACT (ADA)
NFPA 101 LIFE SAFETY CODE / 2003

BUILDING AREA:

FIRST FLOOR 6,085 sf
SECOND FLOOR AND MEZZANINE 1,535 sf

TOTAL 7,620 sf

NUMBER OF STORIES:

2

BUILDING HEIGHT:

22'-0"

OCCUPANCY CLASSIFICATION:

FACTORY F-1 - INDUSTRIAL

FIRE SUPPRESSION:

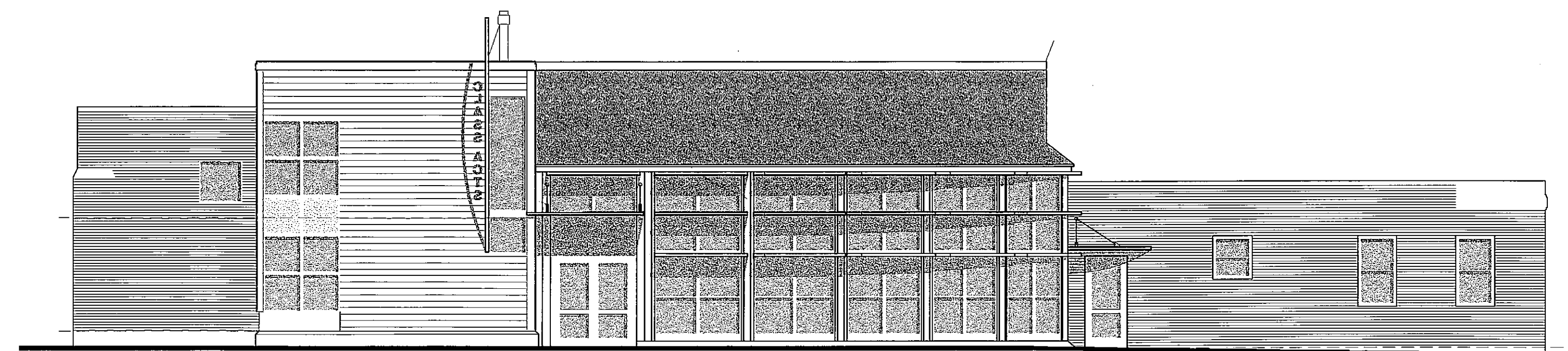
FULLY SPRINKLED WITH SUPERVISED SYSTEM

CONSTRUCTION TYPE:

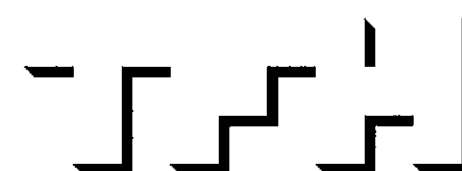
VB

TRAVEL DISTANCE:

200' MAXIMUM



INDUSTRIAL CONDOMINIUMS
BY WILLIAM P. SIMPSON



TFH ARCHITECTS
100 COMMERCIAL STREET
PORTLAND MAINE 04101
TELEPHONE 207 775 6141
ARCHITECTURE PLANNING

DRAWING INDEX:

GENERAL:

- G1.0 TITLE SHEET, ENTITIES
- G1.1 ABBREVIATIONS, GENERAL NOTES, LEGEND AND WALL TYPES
- G1.2 FIRST AND SECOND FLOOR PLANS LIFE SAFETY PLAN

CIVIL:

- BOUNDARY SURVEY
- C1.0 SITE AND LANDSCAPE PLAN
- C1.1 DRAINAGE AND UTILITY PLAN
- C1.2 SITE DETAILS
- C2.0 EROSION CONTROL PLAN
- D1.0 DRAINAGE ANALYSIS
- D1.1 DRAINAGE ANALYSIS

ARCHITECTURAL:

- D1.0 DEMOLITION PLAN
- A1.0 FIRST FLOOR PLAN
- A1.1 SECOND FLOOR PLAN
- A1.2 ROOF PLAN
- A2.0 EXTERIOR ELEVATIONS
- A3.0 BUILDING SECTIONS
- A3.1 BUILDING SECTIONS
- A5.0 PLAN DETAILS
- A5.1 SECTION DETAILS
- A5.2 DETAILS
- A6.0 STAIR SECTIONS
- A7.0 DOOR AND WINDOW SCHEDULE

STRUCTURAL:

- S0.0 STRUCTURAL NOTES
- S1.0 FOUNDATION AND FIRST FLOOR PLAN
- S1.1 SECOND FLOOR AND MEZZANINE FRAMING PLAN
- S1.2 ROOF FRAMING PLAN
- S2.0 EXTERIOR MASONRY REPAIR
- S3.0 FOUNDATION SECTIONS AND DETAILS
- S3.1 FRAMING SECTIONS AND DETAILS