

PROJECT OWNER
JTE
INVESTMENTS
 16 SLED RUN RD.
 N. YARMOUTH ME

General Contractor
GREEN LEAF CONSTRUCTION
 320 Penney Road
 New Gloucester ME

MOBILE FITNESS
 PERSONAL TRAINING CENTER
 50 COVE STREET

Drawings
BENJAMIN WENTZING
 GLC
 207.632.1827

13 MAY 2013

FLOOR PLAN

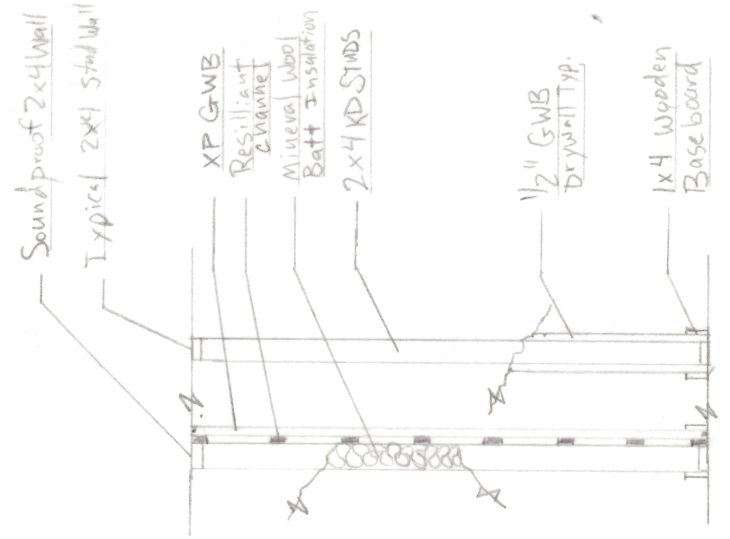
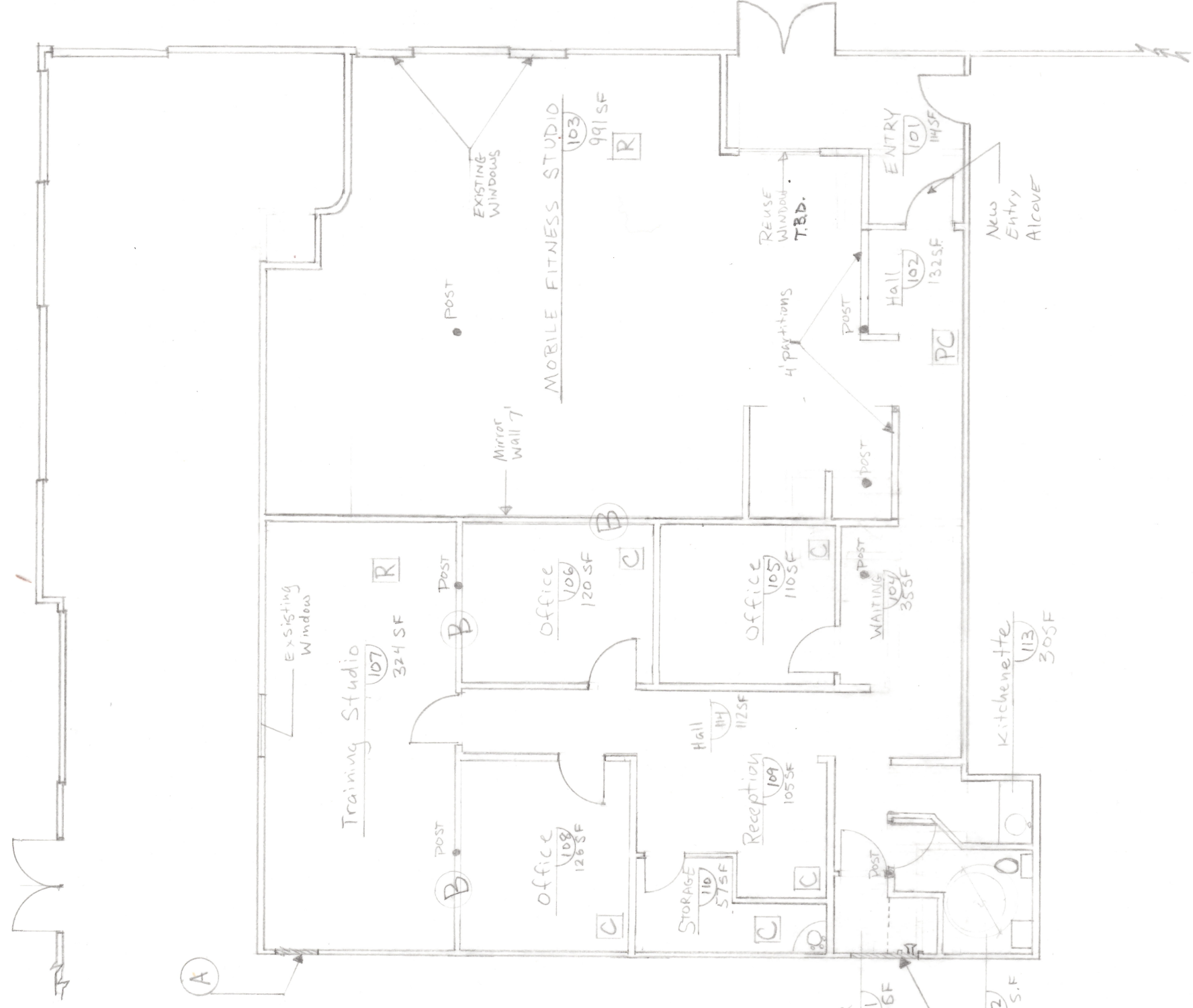
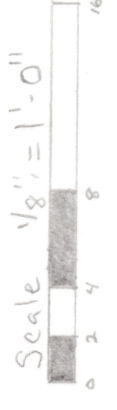
A2.0

NOTES

- 1- (A) INTERIOR WALL INFILL BY LANDLORD
- 2- Interior Studwalls to be floor to ceiling unless otherwise noted
- 3- (B) Sound proofing between studio and office space and studio space. Resilient channel or similar, typ.
- 4

R
C
PC

 Flooring Types R / Rubber
C / Carpet
PC / Painted Concrete
- 5- (114) Rooms to be numbered in accordance with Chapter 10 of the City of Portland Zoning Ordinance: Five Prevention and Protection
- 6- Improved Areas shall meet Codes For Business Occupancy
 - NFPA 13 Sprinters
 - NFPA 72 Signaling
 - NFPA 101 Life Safety
 - Sec A101 Life Safety Plan
 - 2009 IBC
 - City of Portland Zoning Ordinance



2 Interior partition Details
 1/4" = 1'-0"

1 FLOOR PLAN