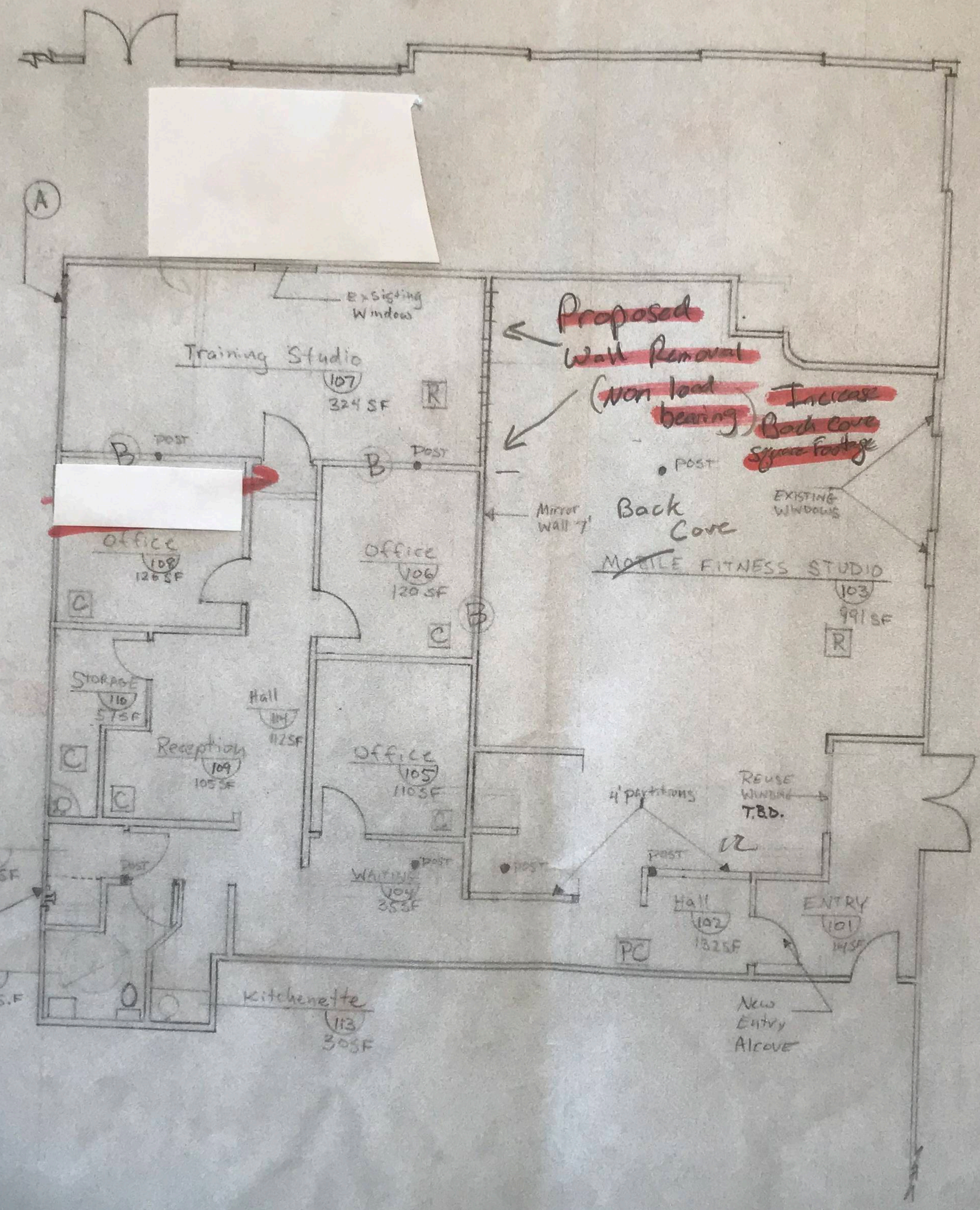


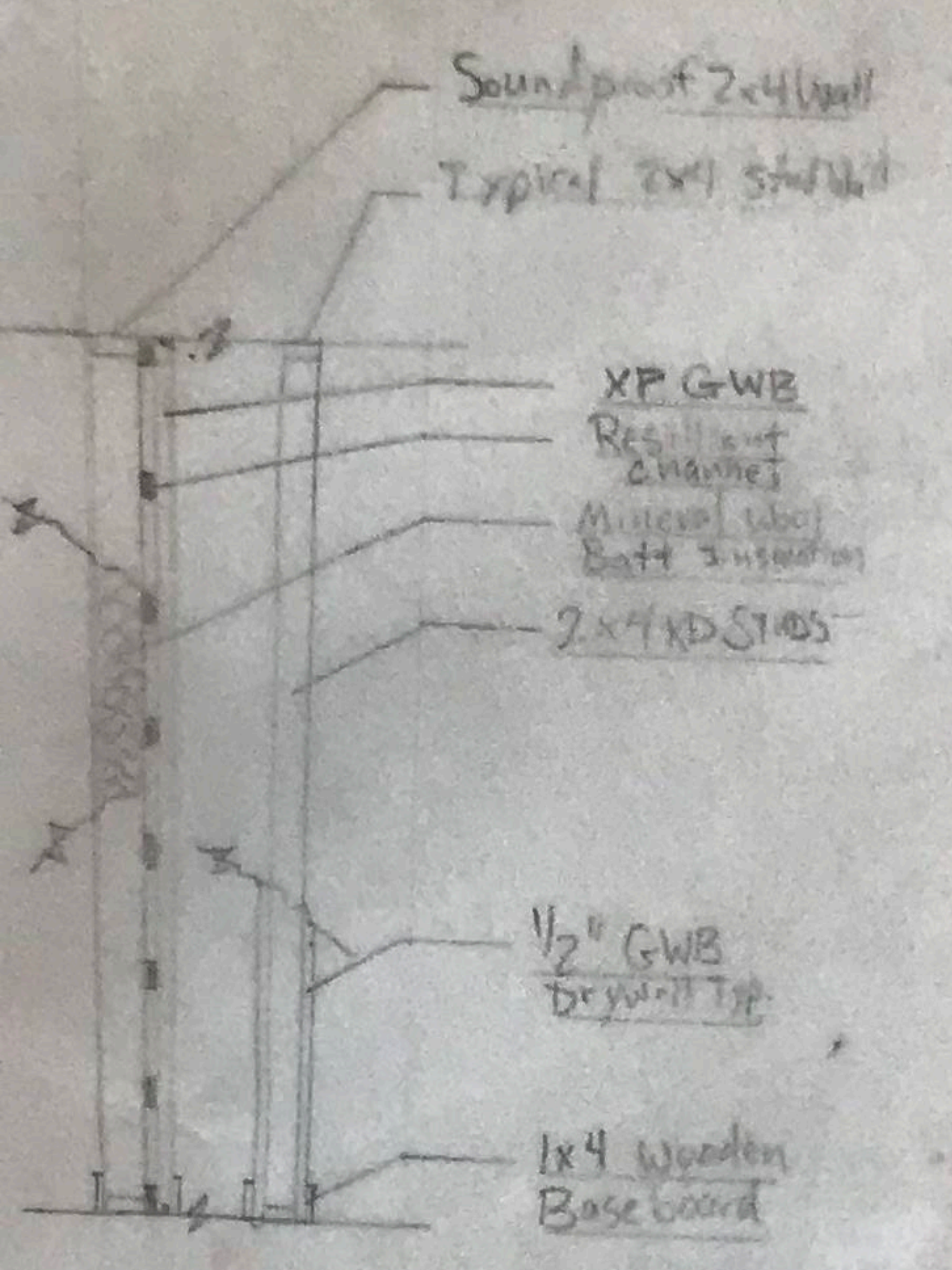
Date: _____
 Dividends, including _____
 of income, prizes, _____
 and certain other _____
 (actions)



NOTES

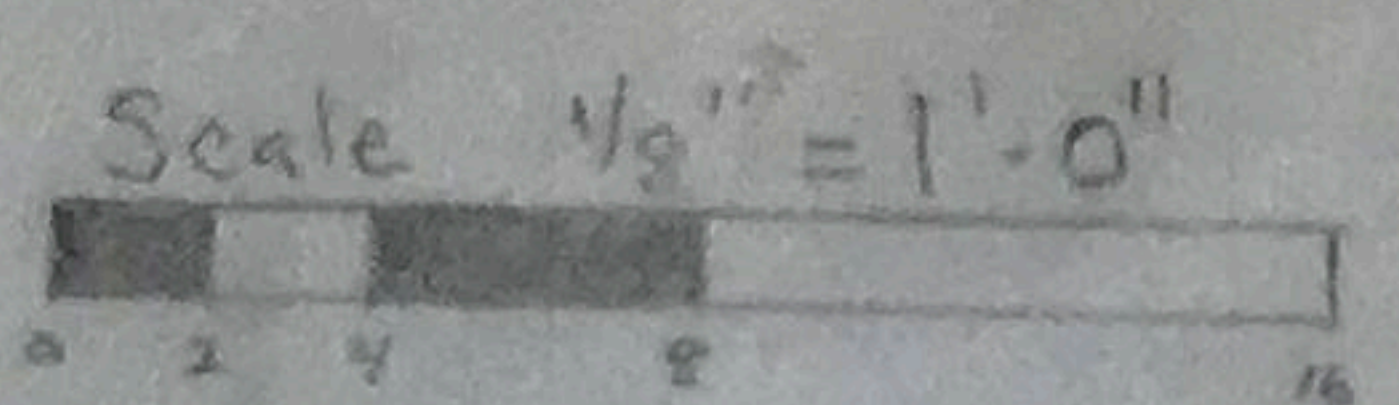
- 1- (A) INTERIOR Wall Infill By (concrete)
- 2- Interior studios to be floor to ceiling unless otherwise noted
- 3- (B) Sound proofing between studio and office space and studio space. Resilient channel or similar, etc.
- 4-

R	Rubber
C	Carpet
PC	Painted Concrete
- 5- (114) Rooms to be numbered in accordance with chapter 10 of the City of Portland Zoning Ordinance: Fire Prevention and Protection
- 6- Improved Areas shall meet Codes For Business occupancy 2009:
 - NFPA 13 Sprinklers
 - NFPA 72 Signaling
 - NFPA 101 Life Safety
 - See A201 Life Safety Plan
 - 2009 IBC
 - City of Portland Zoning ordinance



2 Interior partition Details
 1/4" = 1'-0"

Proposed
 1 FLOOR PLAN



Owner
 JTE Investments
 16 Sled Run Rd.
 N. Yarmouth, ME

G.C.:
 Spindrift Carpentry LLC

Back Cove Personal Fitness

50 Cove St.
 Portland, ME

18 Jan.
 2018

Proposed Floor Plan

8

Painter