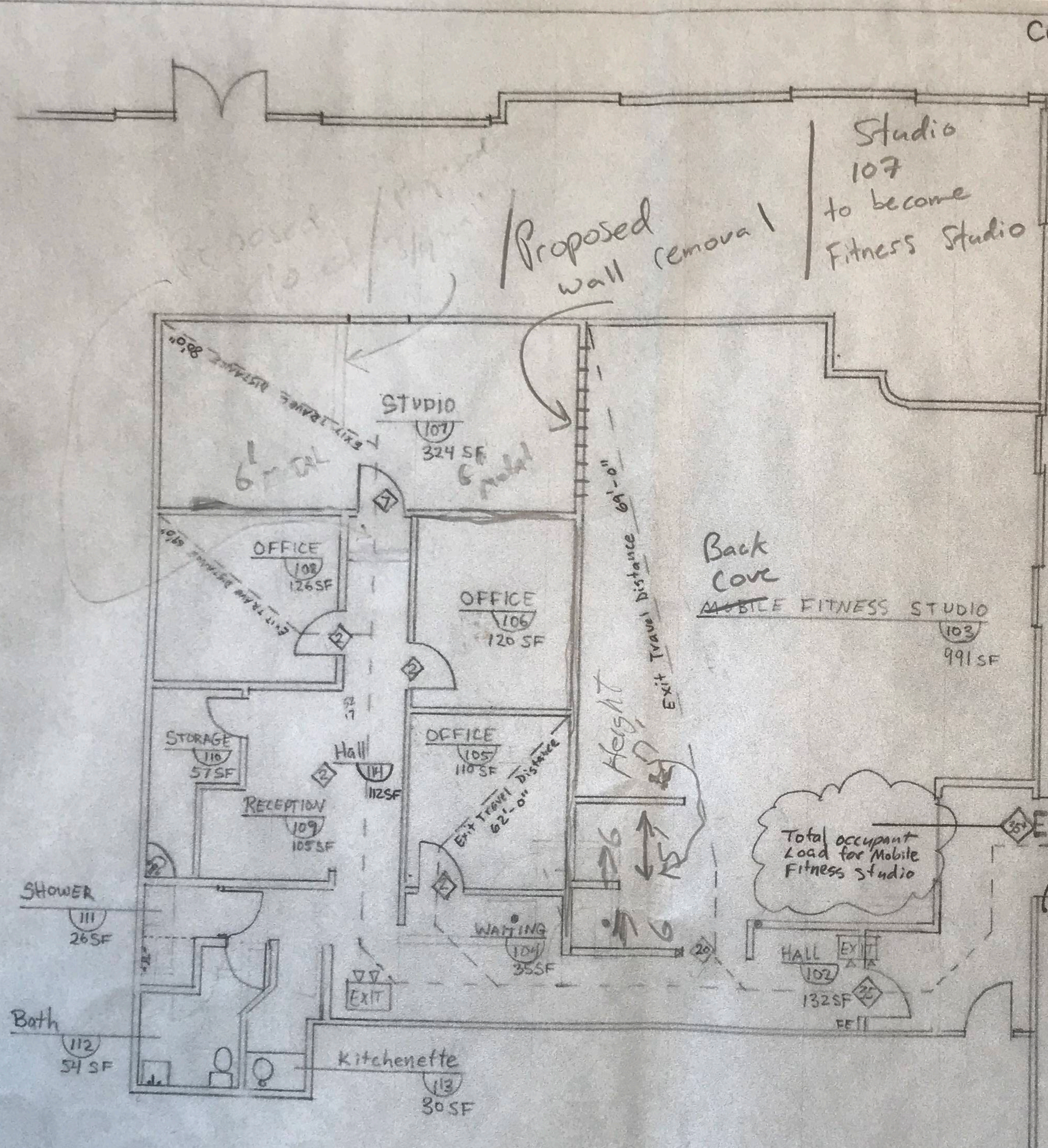


U.S. person (if any) indicating that I am...  
 on this form (if any) above if you have been notified...  
 you must cross out item 2 above if you have been notified...  
 evidence on your tax return. For real estate transactions...  
 cancellation of debt, contributions to an individual retirement...  
 in the certification, but you must provide your correct TIN...

Date  
 friends, including those from stocks or mutual...  
 prizes, awards, or gross

- LIFE SAFETY KEY**
- 4 AREA OCCUPANT LOAD (# People)
  - Primary Exit Area Total Load
  - SPRINKLER (Existing)
  - FE FIRE extinguisher
  - Smoke detector
  - EXIT Sign / Emergency Light



- NOTES:**
- 1 - Fire Protection Provided By Protection 1  
 10 Mansel Drive  
 Portland, ME 04103  
 ph. (207) 772-1171  
 License # MC60018702
  - 2 - Exit/Emergency Lights to be Connected to General Hall Lighting
  - 3 - Fire Extinguisher to be 2A 10BC or greater Inspected Annually.
  - 4 - Total Square Footage Mobile Fitness - 2222 SF
  - 5 - Occupant Loading / s.f.  
 studio - 1 person / 50 s.f.  
 office - 1 person / 100 s.f.
  - 6 Total occupant load For Mobile Fitness Training Center: **35** occupants
  - 7 Annual Inspection of Fire Systems by Protection 1. Meets NFPA 101 2009
- Door width 72" Clear opening 69" Door Capacity 765 E
- Add Cumulative From Adjacent Unit  
 - No information Available For Area Load in Adjacent Area.

Owner  
**JTE Investments**  
 16 Sled Run Rd.  
 N. Yarmouth, ME

G.C.:  
**Spindrift Carpentry LLC**

Back Cove  
 Personal Fitness  
 50 Cove St.  
 Portland, ME

18 Jan. 2018

**Life Safety Plan**

# 6

**LIFE SAFETY PLAN**