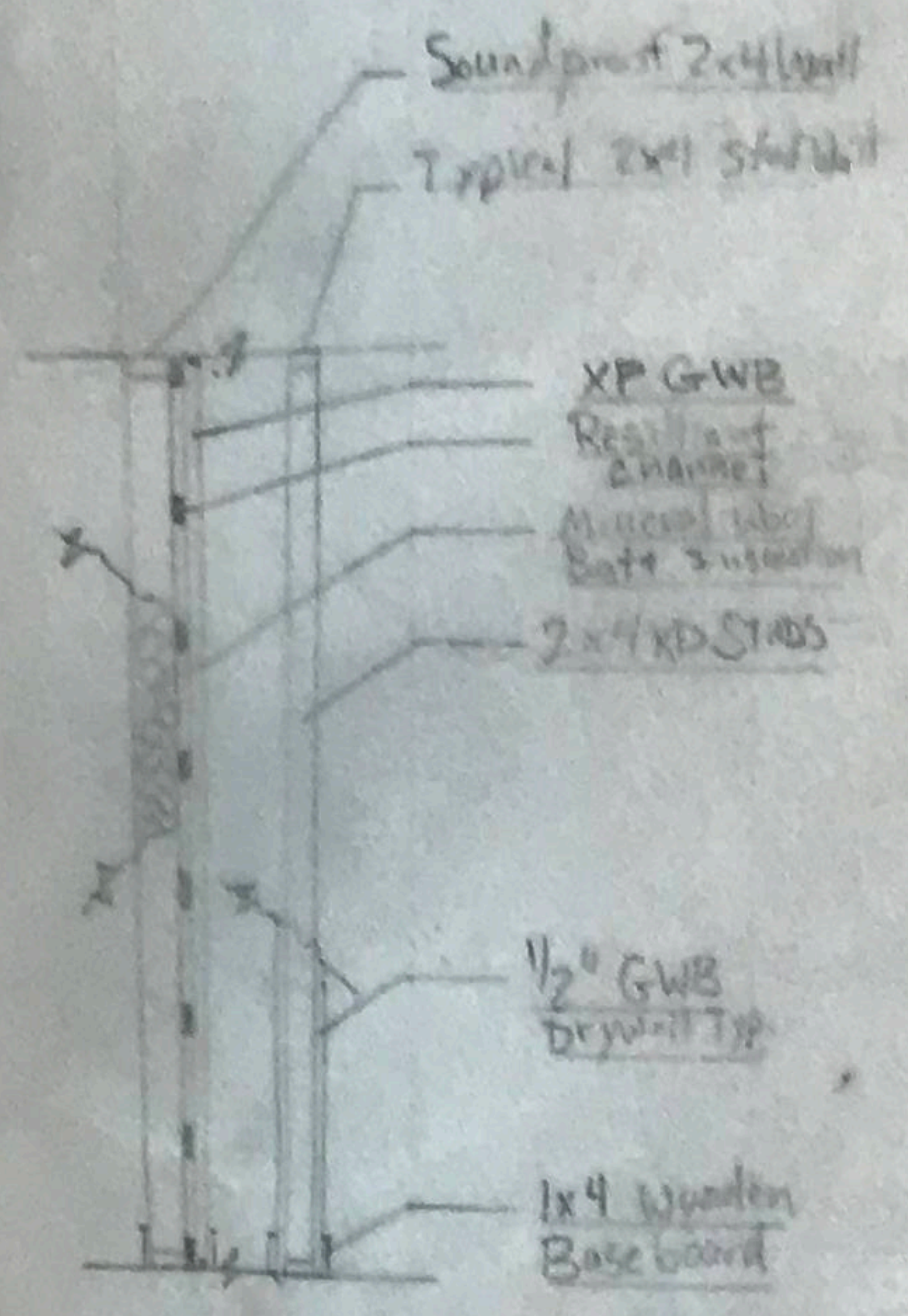
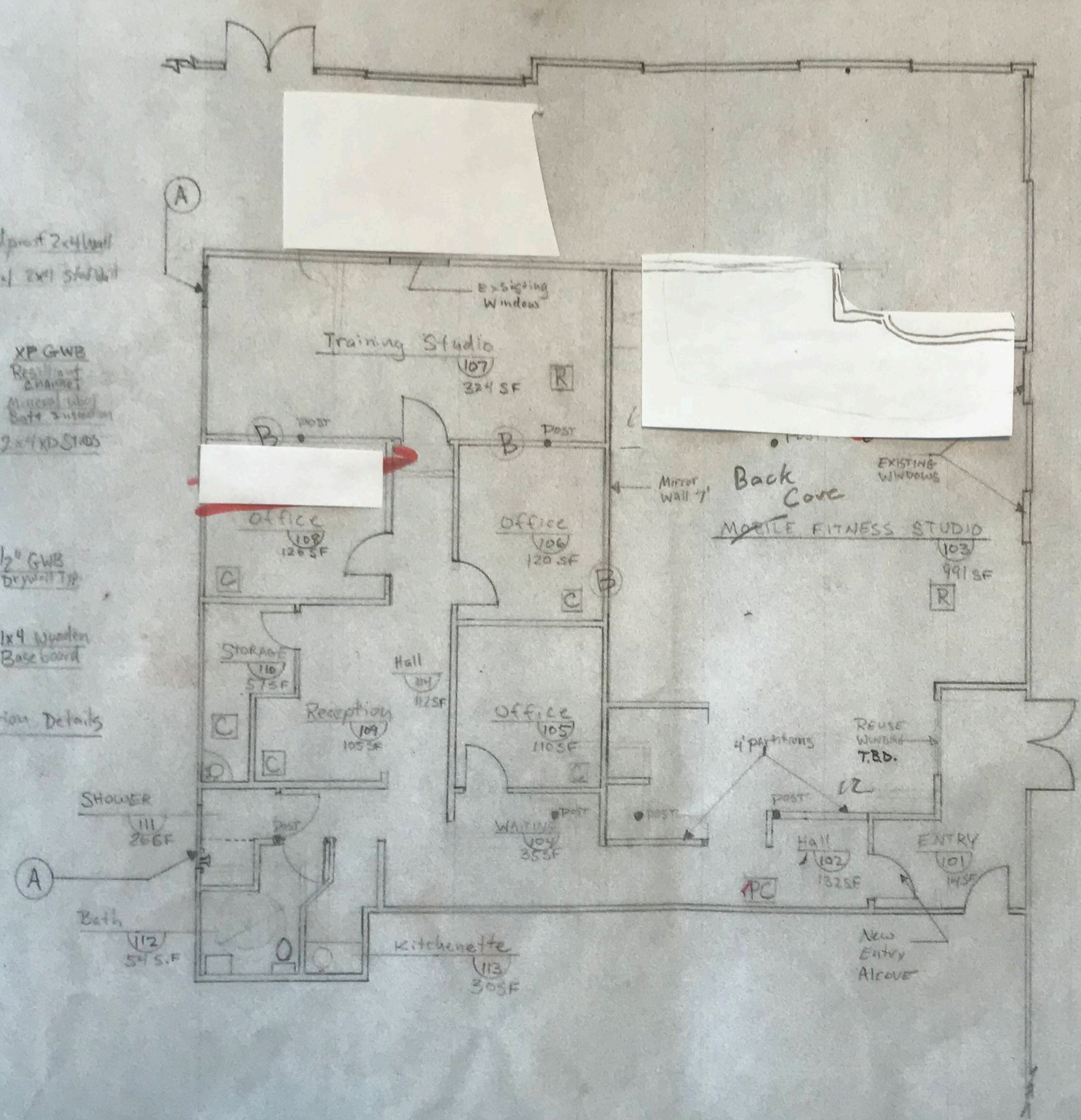


...ect taxpayer identifying...  
 because: (a) I am exempt from...  
 up withholding as a result of a fault...  
 defined below), and  
 indicating that I am exempt from FATCA reporting...  
 you have been notified by the IRS that you are...  
 For real estate transactions, item 2 does not apply...  
 For other transactions, you must provide your correct TIN. See the instructions...  
 including those from stocks or mutual...  
 me, prizes, awards, or gross...  
 in other



2 Interior partition Details  
 1/4" = 1'-0"



Proposed  
 1 FLOOR PLAN

NOTES

- 1- (A) INTERIOR WALL INFILL By Landlord
- 2- Induce studs to be floor to ceiling unless otherwise noted
- 3- (B) Sound proofing between studio and office space and studio space. resilient channel or similar, etc.
- 4 

R	Flooring Types	R / Rubber
C		C Carpet
PC		PC Painted Concrete
- 5- (119) Rooms to be numbered in accordance with chapter 10 of the City of Portland Zoning Ordinance: Fire Prevention and Protection
- 6- Improved Areas shall meet Codes For Business occupancy 2009:
  - NFPA 13 Sprinklers
  - NFPA 72 Signaling
  - NFPA 101 Life Safety
  - See A201 Life Safety Plan
  - 2009 IBC
  - City of Portland Zoning ordinance

Owner  
 JTE  
 Investments  
 16 Sled Run Rd.  
 N. Yarmouth, ME

G.C.:  
 Spindrift  
 Carpentry  
 LLC

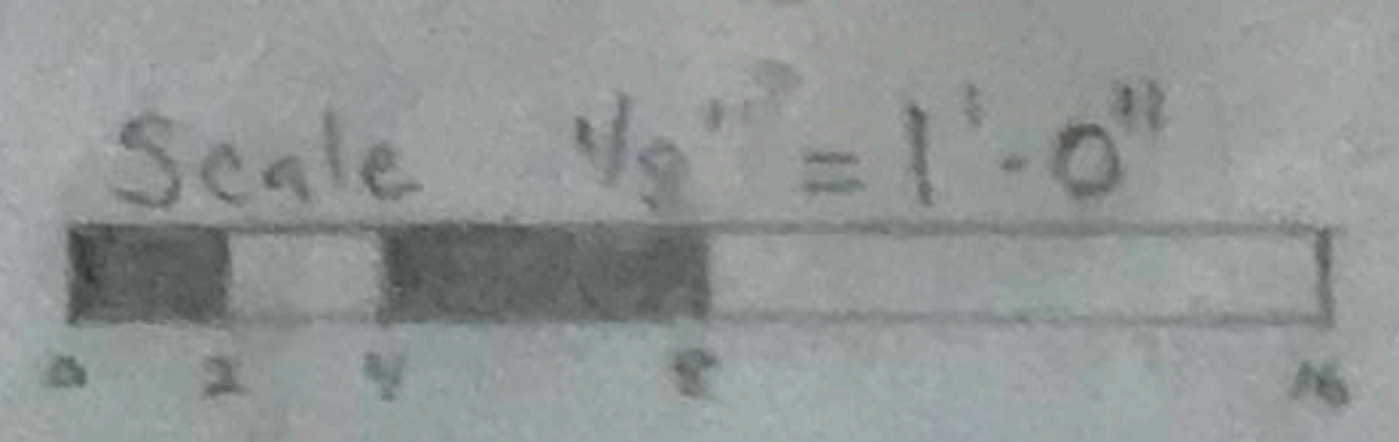
Back Cove  
 Personal  
 Fitness

50 Cove St.  
 Portland, ME

18 Jan.  
 2018

Existing  
 Floor  
 Plan

# 7



painter