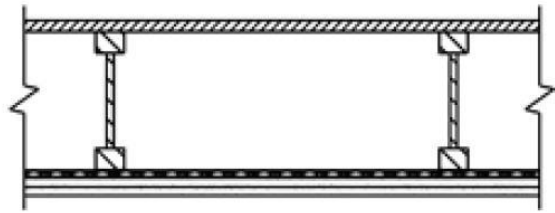
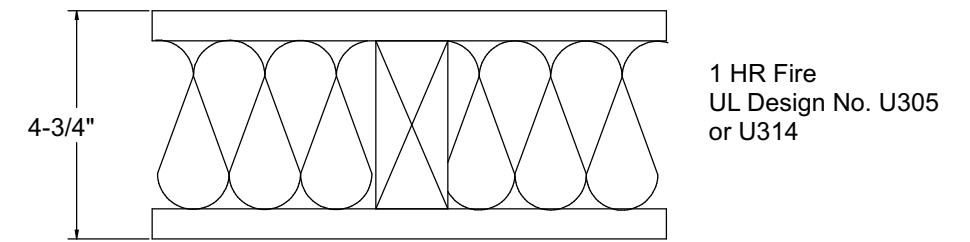


<b>1 Hour</b>	Design #	GA File #	<b>STC - 53</b>	<b>IIC - 46</b>
	<b>N/A</b>	<b>FC 5241</b>	Sound Test # TLF-02-043a	Test # 02-027

[Link to .PDF file](#)  
[Link to .DWG file](#)  
[Link to .DWG/Text file](#)

Base Layer 1/2" (12.7 mm) Fire-Shield C Gypsum Board applied at right angles to resilient furring channels with 1-1/4" Type S drywall screws 12" o.c. Resilient furring channels applied at right angles to joists and spaced 16" o.c. with 1-1/4" Type W drywall screws to wood I-joists 24" o.c. Face layer 1/2" Fire-Shield C Gypsum Board applied at right angles to channels with 1-5/8" Type S drywall Screws 12" o.c. Face layer end joints located midway between channels and attached to base layer with 1-1/2" Type G screws 12" o.c. Edge joints offset 24" from base layer edge joints. Wood I-joists supporting 5/8" oriented strand board applied at right angles to I-joists with 8d common nails 12" o.c. Sound test with 3-1/2" mineral wool or fiberglass insulation in joist cavity.



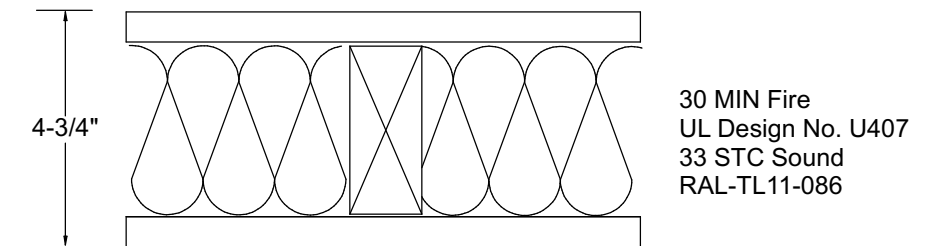
- System Description**
- Wood Stud Interior Partition
- 5/8" SHEETROCK Brand FIRECODE Core Gypsum Sheathing
  - 2" x 4" wood studs 16" o.c.
  - 3-1/2" fiberglass sound batt
  - Joints exposed or finished



## Existing Ceiling Assembly

DOOR SCHEDULE						
NUMBER	SIZE	TYPE	WIDTH	HEIGHT	R/O	COMMENTS
D01	3068 L IN	RATED	36 "	80 "	38 1/2"X82 1/2"	
D02	2670 L IN	HINGED	30 "	84 "	32 1/2"X86 1/2"	
D03	3452 L IN	D03-3452	40 "	62 "	42 1/2"X64 1/2"	

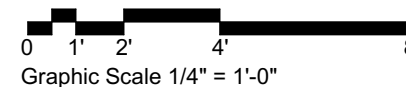
WINDOW SCHEDULE							
NUMBER	QTY	MANUFACTURER	MODEL	TYPE	EGRESS	TEMPERED	COMMENTS
W01	1	ANDERSEN	CXW145	NEW	YES		
W02	1	ANDERSEN	P4035/AR41	NEW			MULLED UNIT - FIXED OVER AWNING
W03	1			RELOCATED			RELOCATED FROM LOCATION OF NEW W02, MATCH HEAD HEIGHT



- Wood Stud Interior Partition
- 5/8" SHEETROCK UltraLight Firecode 30 Panels
  - Existing 2x4 Wood stud
  - 3-1/2" fiberglass sound batt
  - 5/8" SHEETROCK UltraLight Firecode 30 Panels



## Wall Types



**Kevin Moquin Architect**  
 Maine Licensed Architect  
 Portland, ME  
 www.km-a.me  
 kevin@km-a.me | (207) 615-6421



**58 Hammond**  
**Efficiency**  
  
 Portland, ME  
**1/15/2016**

**Schedule & Details**

**A.06**

6 of 7