

KEY SEE LIGHTING SCHEDULE FOR MORE INFORMATION	
	RECESSED CEILING FIXTURE
	SURFACE MOUNT CEILING FIXTURE
	PENDANT FIXTURE
	WALL SCONCE
	POST LIGHT
	CABLE TRACK LIGHTING
	FLUORESCENT TUBE LIGHT
	12V LINEAR LED W/ REMOTE TRANSFORMER, 2700K
	RECESSED CEILING FIXTURE W/ GIMBAL
	EXTERIOR FLOOD LIGHT
	DENOTES EXISTING FIXTURE
	EXTERIOR RECESSED FLOOR FIXTURE
	RECESSED CEILING FIXTURE (EXTERIOR)
	WALL SWITCH
	3-WAY WALL SWITCH
	FAN SWITCH
	DUPLEX RECEPTACLE
	220 VOLT RECEPTACLE
	GFI RECEPTACLE
	DUPLEX FLOOR RECEPTACLE
	DATA AND/OR TV
	FANLIGHT COMBO FIXTURE
	THERMOSTAT

NOTES:

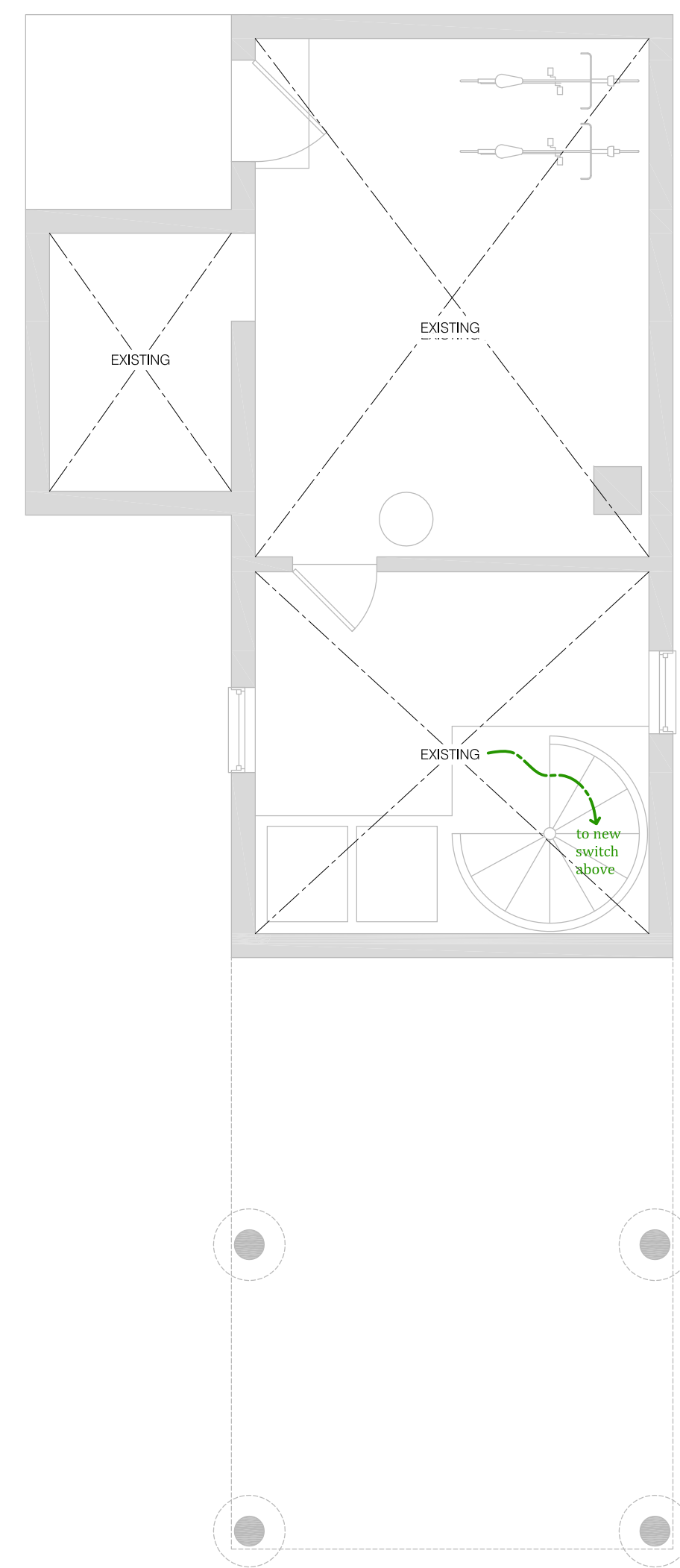
TOP OF ALL SWITCHES TO BE MOUNTED AT 48" AFF UNLESS OTHERWISE NOTED.

SMOKE DETECTORS/CO AS REQUIRED BY CODE.

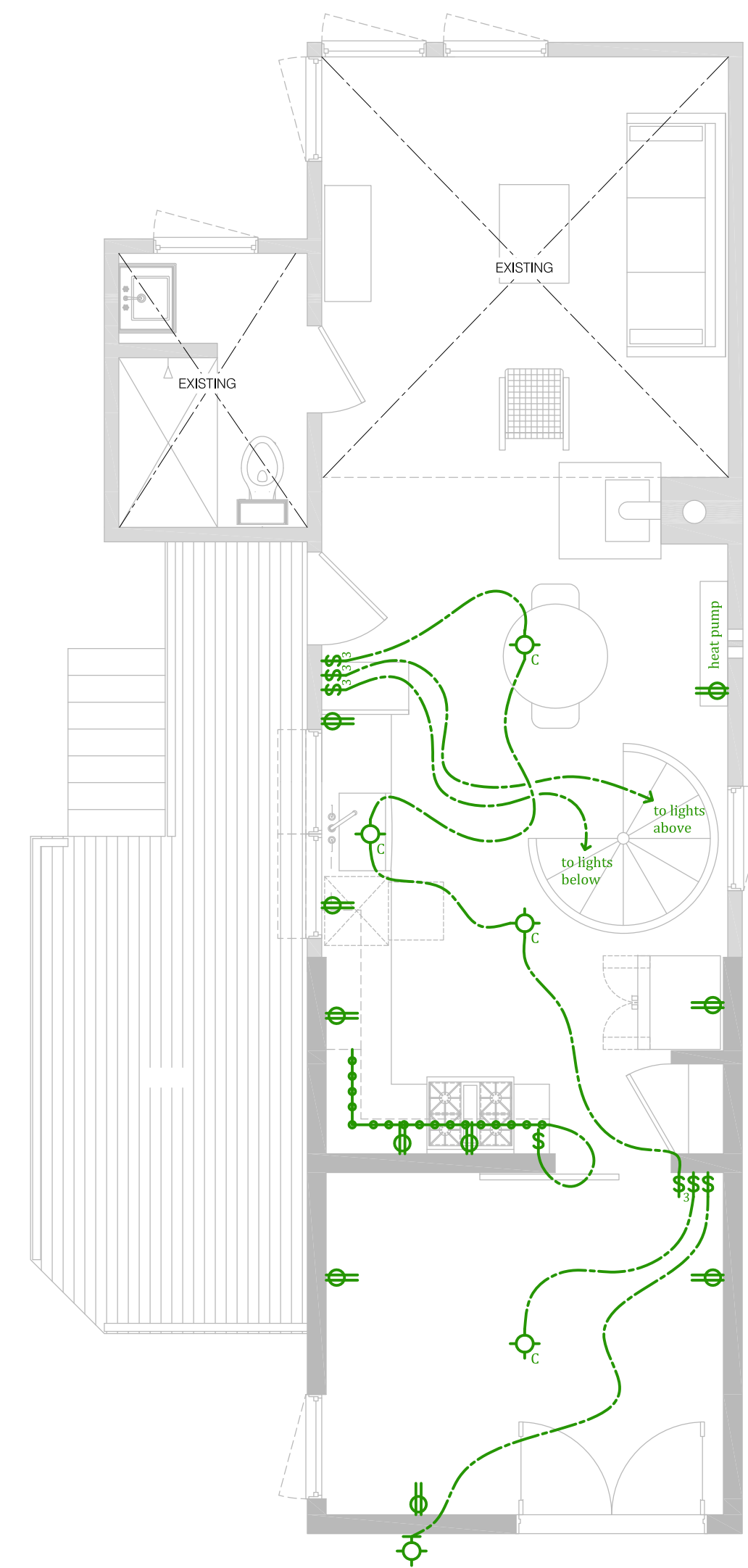
NO MORE THAN 4 SWITCHES GANGED IN ONE BOX. IF MORE THAN 4 SWITCHES ARE REQUIRED, STACK 2 BOXES ABOVE ONE ANOTHER WITH EQUAL NUMBER OF SWITCHES IN EACH BOX. USE DUMMY SWITCH IF NECESSARY.

MAINTAIN EXISTING OUTLETS UNLESS OTHERWISE NOTED. OUTLETS TO CODE AS REQ'D.

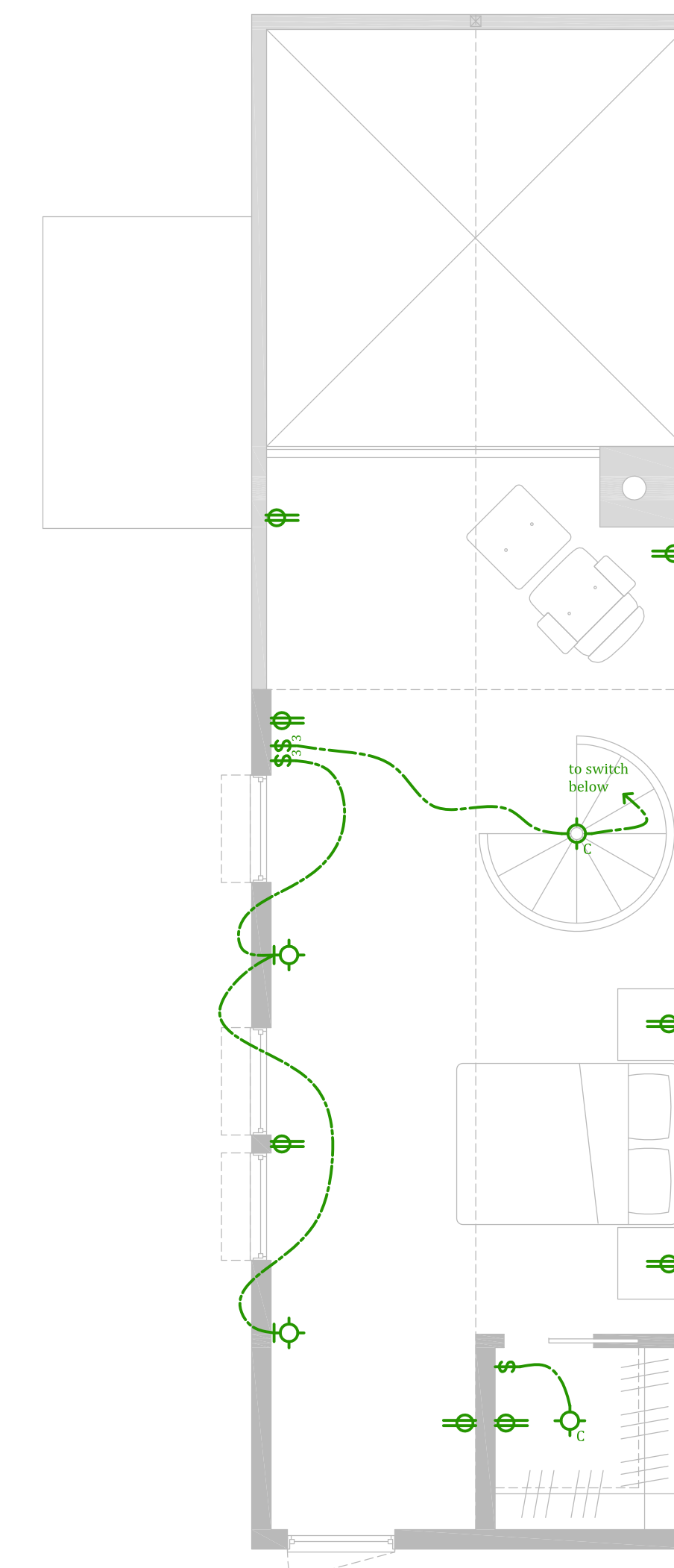
REPLACE ALL EXISTING SWITCH PLATES TO MATCH NEW, TBD.



1 basement floor plan
1/4" = 1'-0"



2 first floor plan
1/4" = 1'-0"



3 second floor plan
1/4" = 1'-0"

