

© 2014 RYAN SENATORE ARCHITECTURE

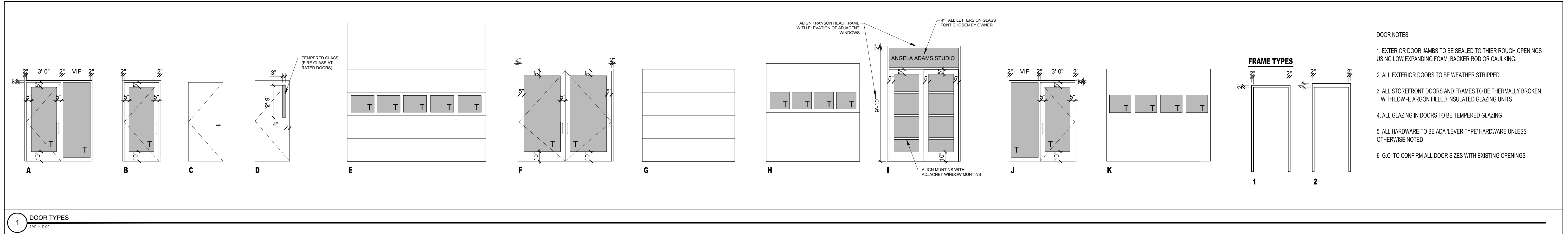
RENOVATIONS TO
170 ANDERSON STREET
PORTLAND, MAINE



RYAN SENATORE
ARCHITECTURE
565 CONGRESS STREET
SUITE 304
PORTLAND, MAINE 04101
207-650-0414
senatorearchitecture.com

CONSULTANTS:
STRUCTURAL:
Structural Integrity
77 Oak Street
Portland, ME 04101
207-774-4614

DOORS



- DOOR NOTES:
1. EXTERIOR DOOR JAMBS TO BE SEALED TO THEIR ROUGH OPENINGS USING LOW EXPANDING FOAM BACKER ROD OR CAULKING.
 2. ALL EXTERIOR DOORS TO BE WEATHER STRIPPED
 3. ALL STOREFRONT DOORS AND FRAMES TO BE THERMALLY BROKEN WITH LOW-E ARGON FILLED INSULATED GLAZING UNITS
 4. ALL GLAZING IN DOORS TO BE TEMPERED GLAZING
 5. ALL HARDWARE TO BE ADA 'LEVER TYPE' HARDWARE UNLESS OTHERWISE NOTED
 6. G.C. TO CONFIRM ALL DOOR SIZES WITH EXISTING OPENINGS

1 DOOR TYPES
1/4" = 1'-0"

DOOR SCHEDULE																				
DOOR NO.	DOOR				FRAME						GENERAL									
	TYPE	WIDTH	HEIGHT	THICKNESS	MATERIAL	INSULATED	TYPE	MATERIAL	THRESHOLD	HEAD	JAMB	SILL	CLOSER	FIRE RATING (HOURS)	HARDWARE	REMARKS	ABBREVIATION KEY			
100.1	A	3'-0"	7'-0"	1-3/4"	AL	PTD	Y	-	AL	AL	-	-	Y	-	-	PANIC HARDWARE, STOREFRONT DOOR WITH SIDE LIGHT, 1" DIAMETER 12" LONG PULL, ENLARGE FRAME HEAD AS REQUIRED TO FIT EXISTING OPENING	M.S. - MORTISE LOCK SET L.S. - LOCK SET P.R. - PIRACY SET P.F. - PASSAGE SET L.P. - LEVER PULL P.H. - PIRACY LENS	STL - STEEL WD - WOOD AL - ALUMINUM FRP - FIBERGLASS REINFORCED		
100.2	B	3'-0"	6'-6"	1-3/4"	AL	PTD	Y	-	AL	-	-	Y	-	-	-	PANIC HARDWARE, STOREFRONT DOOR, 1" DIAMETER 12" LONG PULL, CONFIRM DOOR SIZE WITH EXISTING OPENING				
101.1	C	3'-0"	7'-0"	1-3/4"	STL	PTD	Y	1	STL	-	-	Y	-	-	-					
102.1	C	3'-0"	7'-0"	1-3/4"	STL	PTD	Y	1	STL	-	-	Y	-	-	-	PANIC HARDWARE, STOREFRONT DOOR, 1" DIAMETER 12" LONG PULL, CONFIRM DOOR SIZE WITH EXISTING OPENING, INFILL HEAD ABOVE FRAME WITH MTL FLASHING TO MATCH DOOR				
200.1	B	3'-0"	7'-0"	1-3/4"	AL	PTD	Y	-	AL	AL	-	Y	-	-	-	PANIC HARDWARE				
200.2	D	3'-0"	7'-0"	1-3/4"	STL	PTD	Y	1	STL	AL	-	Y	60	-	-	PANIC HARDWARE				
200.3	K	8'-0"	8'-0"	1-3/4"	STL	PTD	Y	-	-	-	-	Y	-	-	-	OVERHEAD DOOR, AUTOMATIC OPERATOR, CUT NEW MASONRY OPENING				
201.1	C	3'-0"	7'-0"	1-3/4"	STL	PTD	Y	1	STL	-	-	Y	-	-	-					
300.1	B	3'-0"	7'-0"	1-3/4"	AL	PTD	Y	-	AL	AL	-	Y	-	-	-	PANIC HARDWARE, STOREFRONT DOOR, 1" DIAMETER 12" LONG PULL, CONFIRM DOOR SIZE WITH EXISTING OPENING, INFILL ADJACENT TO DOOR FRAME WITH FRAMING AND MTL FLASHING TO MATCH DOOR				
300.2	D	3'-0"	7'-0"	1-3/4"	STL	PTD	Y	1	STL	AL	-	Y	60	-	-	PANIC HARDWARE				
300.3	F	6'-0"	7'-0"	1-3/4"	AL	PTD	Y	-	AL	AL	-	Y	-	-	-	STOREFRONT DOORS, 1" DIAMETER 12" LONG PULL, CONFIRM DOOR SIZE WITH EXISTING OPENING, PAIR OF DOORS				
301.1	C	3'-0"	7'-0"	1-3/4"	STL	PTD	Y	1	STL	-	-	Y	-	-	-					
400.1	B	3'-0"	7'-0"	1-3/4"	AL	PTD	Y	-	AL	AL	-	Y	-	-	-	PANIC HARDWARE, STOREFRONT DOOR, 1" DIAMETER 12" LONG PULL, ADJUST MASONRY OPENING TO ACCOMMODATE 3'-0" DOOR, PROVIDE LINTEL				
400.2	E	12'-0"	12'-0"	1-3/4"	STL	PTD	Y	-	-	-	-	Y	-	-	-	OVERHEAD DOOR WITH INSULATED GLAZING PANELS, AUTOMATIC OPERATOR				
400.3	F	8'-0"	8'-0"	1-3/4"	AL	PTD	Y	-	AL	AL	-	Y	-	-	-	PANIC HARDWARE, STOREFRONT DOORS, 1" DIAMETER 12" LONG PULL, CONFIRM DOOR SIZE WITH EXISTING OPENING, PAIR OF OVERSIZED DOORS				
401.1	C	3'-0"	7'-0"	1-3/4"	STL	PTD	Y	1	STL	-	-	Y	-	-	-					
500.1	D	3'-0"	7'-0"	1-3/4"	STL	PTD	Y	1	STL	AL	-	Y	60	-	-	PANIC HARDWARE				
500.2	D	3'-0"	7'-0"	1-3/4"	STL	PTD	Y	1	STL	AL	-	Y	-	-	-	PANIC HARDWARE				
500.3	G	10'-0"	8'-0"	1-3/4"	STL	PTD	Y	-	-	-	-	Y	-	-	-	OVERHEAD DOOR, AUTOMATIC OPERATOR				
501.1	C	3'-0"	7'-0"	1-3/4"	STL	PTD	Y	1	STL	-	-	Y	-	-	-					
502.1	G	10'-0"	8'-0"	1-3/4"	STL	PTD	Y	-	-	-	-	Y	-	-	-	OVERHEAD DOOR, AUTOMATIC OPERATOR (REPLACE IN FUTURE WITH FIRE RATED ROLL-UP DOOR IF SEPARATE TENANT LEASES SPACE)				
502.2	D	3'-0"	7'-0"	1-3/4"	STL	PTD	Y	1	STL	AL	-	Y	60	-	-					
502.3	H	8'-0"	8'-0"	1-3/4"	STL	PTD	Y	-	-	-	-	Y	-	-	-	OVERHEAD DOOR, AUTOMATIC OPERATOR, CUSTOM SIZE DOOR OR INFILL HEAD AT OPENING WITH FRAMING AND FLASHING TO MATCH DOOR				
502.4	H	8'-0"	8'-0"	1-3/4"	STL	PTD	Y	-	-	-	-	Y	-	-	-	OVERHEAD DOOR, AUTOMATIC OPERATOR, CUSTOM SIZE DOOR OR INFILL HEAD AT OPENING WITH FRAMING AND FLASHING TO MATCH DOOR				
502.5	H	8'-0"	8'-0"	1-3/4"	STL	PTD	Y	-	-	-	-	Y	-	-	-	OVERHEAD DOOR, AUTOMATIC OPERATOR, CUSTOM SIZE DOOR OR INFILL HEAD AT OPENING WITH FRAMING AND FLASHING TO MATCH DOOR				
502.6	B	3'-0"	7'-0"	1-3/4"	AL	PTD	Y	-	AL	AL	-	Y	-	-	-	PANIC HARDWARE, STOREFRONT DOOR, 1" DIAMETER 12" LONG PULL, ADJUST MASONRY OPENING TO ACCOMMODATE 3'-0" DOOR, PROVIDE LINTEL				
502.7	D	3'-0"	7'-0"	1-3/4"	STL	PTD	Y	1	STL	AL	-	Y	60	-	-					
502.8	G	10'-0"	8'-0"	1-3/4"	STL	PTD	Y	-	-	-	-	Y	-	-	-	OVERHEAD DOOR, AUTOMATIC OPERATOR (REPLACE IN FUTURE WITH FIRE RATED ROLL-UP DOOR IF SEPARATE TENANT LEASES SPACE)				
600.1	I	8'-0"	8'-0"	1-3/4"	AL	PTD	Y	-	AL	AL	-	Y	-	-	-	PANIC HARDWARE, PAIR OF STOREFRONT DOORS, TRANSOM ABOVE DOOR, CUSTOM MUNTINS ON DOORS				
600.2	B	3'-0"	7'-0"	1-3/4"	AL	PTD	Y	-	AL	AL	-	Y	-	-	-	PANIC HARDWARE, STOREFRONT DOOR, 1" DIAMETER 12" LONG PULL, CONFIRM EXISTING OPENING				
600.3	D	3'-0"	7'-0"	1-3/4"	STL	PTD	Y	1	STL	AL	-	Y	60	-	-					
600.4	C	3'-0"	7'-0"	1-3/4"	STL	PTD	Y	1	STL	-	-	Y	-	-	-					
600.5	D	3'-0"	7'-0"	1-3/4"	STL	PTD	Y	1	STL	AL	-	Y	60	-	-	PANIC HARDWARE				
700.1	C	3'-0"	7'-0"	1-3/4"	STL	PTD	Y	1	STL	AL	-	Y	60	-	-	PANIC HARDWARE				
800.1	J	3'-0"	7'-0"	1-3/4"	AL	PTD	Y	-	AL	AL	-	Y	-	-	-	PANIC HARDWARE, STOREFRONT DOOR WITH SIDE LIGHT, 1" DIAMETER 12" LONG PULL, ENLARGE FRAME HEAD AS REQUIRED TO FIT EXISTING OPENING				

REVISIONS:

DATE: MAY 09, 2014
PROJECT No. 1416
DRAWN BY: RJS / RRT
CHECKED BY: RJS
SCALE: AS NOTED

SHEET TITLE:

DOOR SCHEDULE