

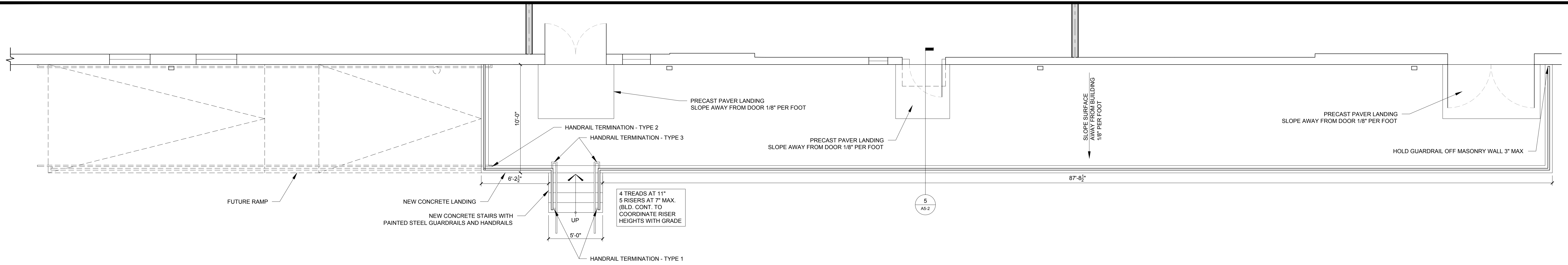
© 2014 RYAN SENATORE ARCHITECTURE

RENOVATIONS TO
170 ANDERSON STREET
PORTLAND, MAINE

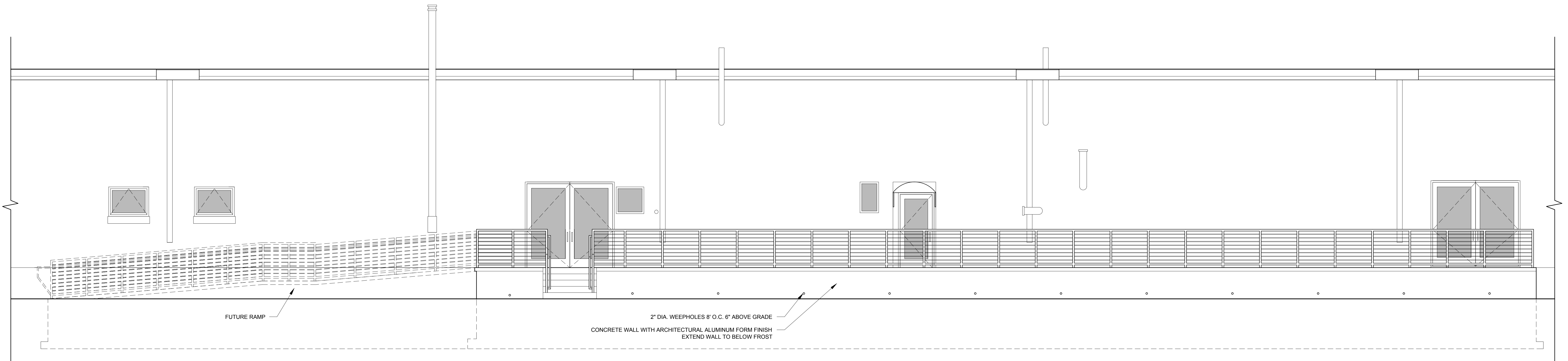


RYAN SENATORE
ARCHITECTURE
565 CONGRESS STREET, 1
SUITE 304
PORTLAND, MAINE 04101
207-655-6414
senatorearchitecture.com

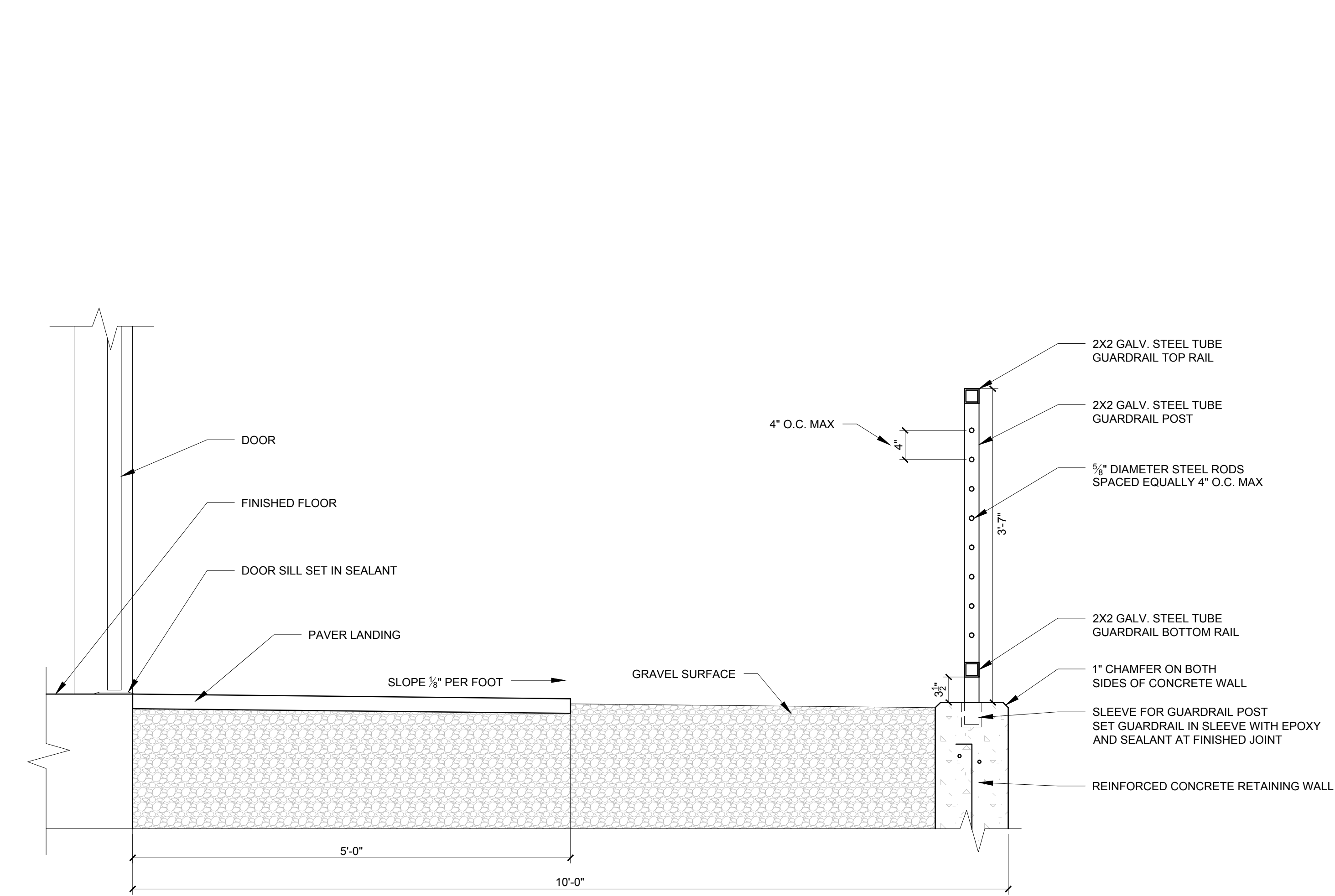
CONSULTANTS:
STRUCTURAL:
Structural Integrity
77 Oak Street
Portland, ME 04101
207-774-4614



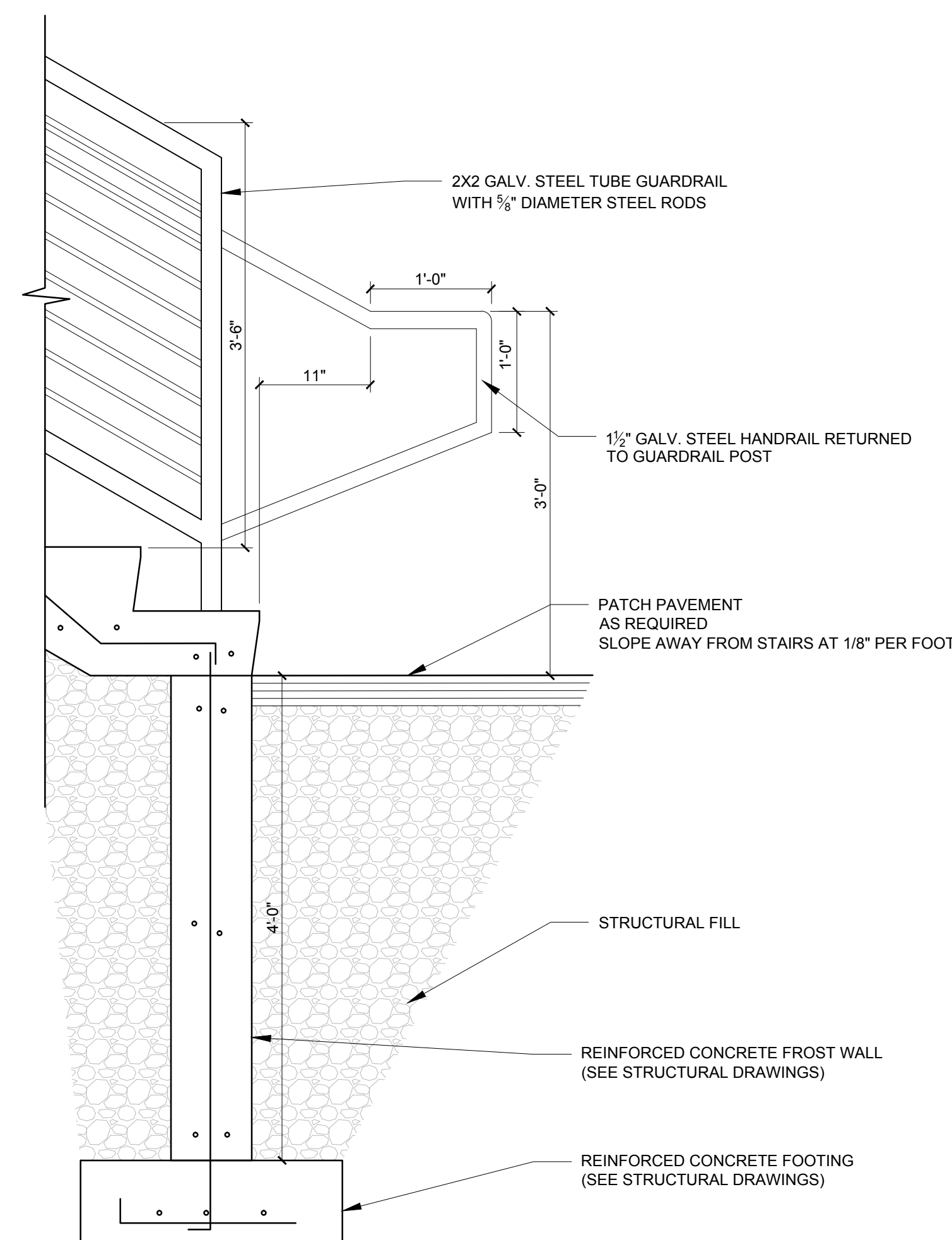
1 STAIR / RAMP PLAN
1/8" = 1'-0"



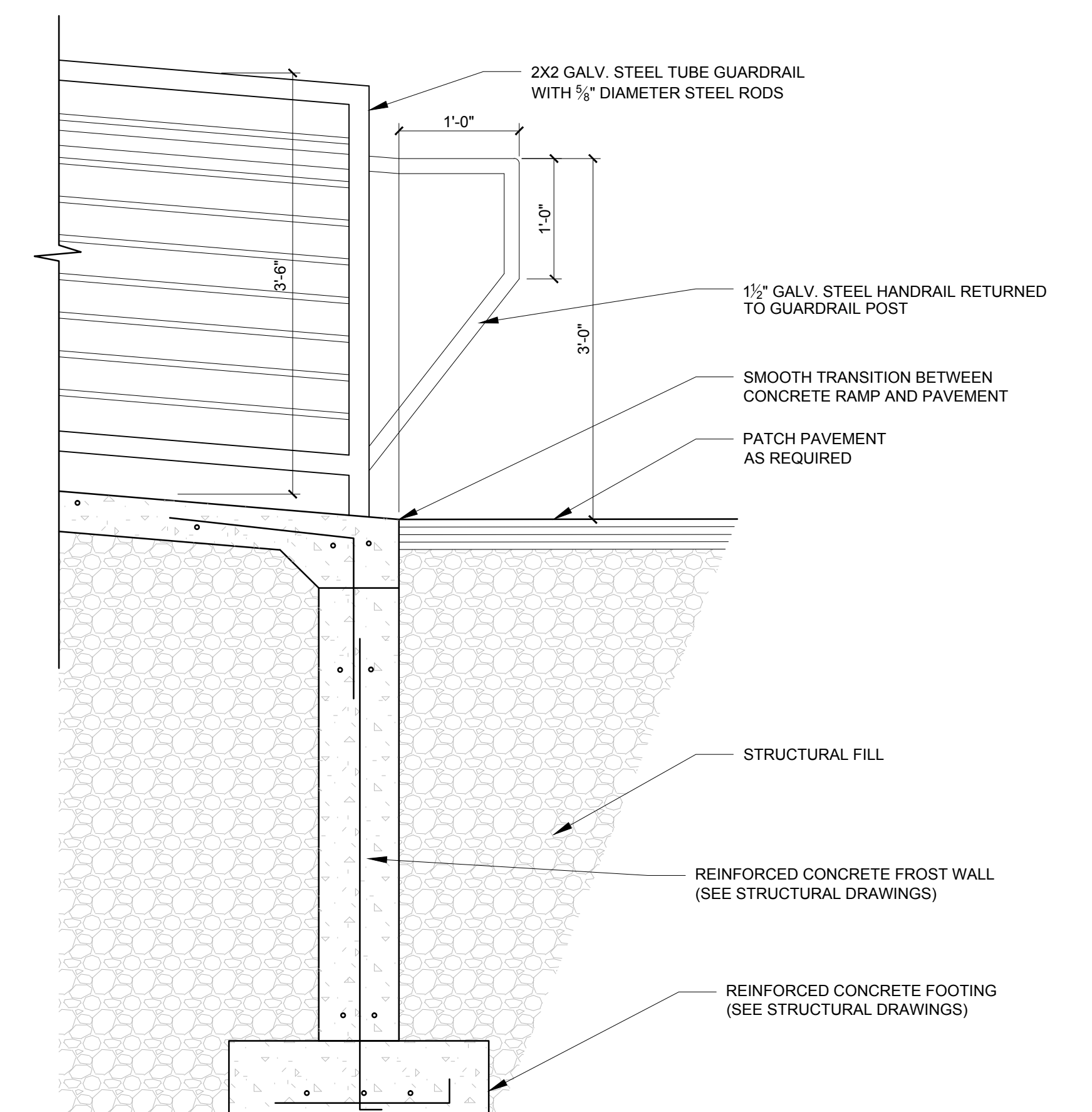
2 STAIR / RAMP ELEVATION
3/8" = 1'-0"



5 PLATFORM SECTION DETAIL
1" = 1'-0"



4 STAIR DETAIL
1" = 1'-0"



3 RAMP DETAIL
1" = 1'-0"

REVISIONS:

DATE: MAY 09, 2014
PROJECT No. 1416
DRAWN BY: RJS / RRT
CHECKED BY: RJS
SCALE: AS NOTED

SHEET TITLE:

DETAILS

A5-2