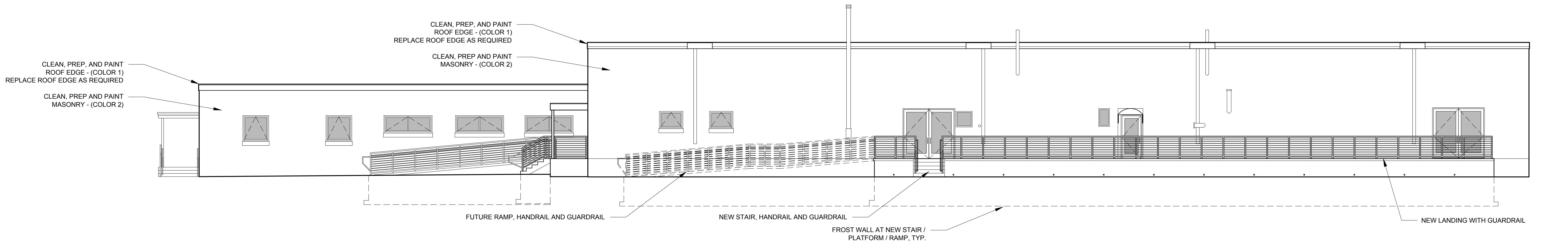
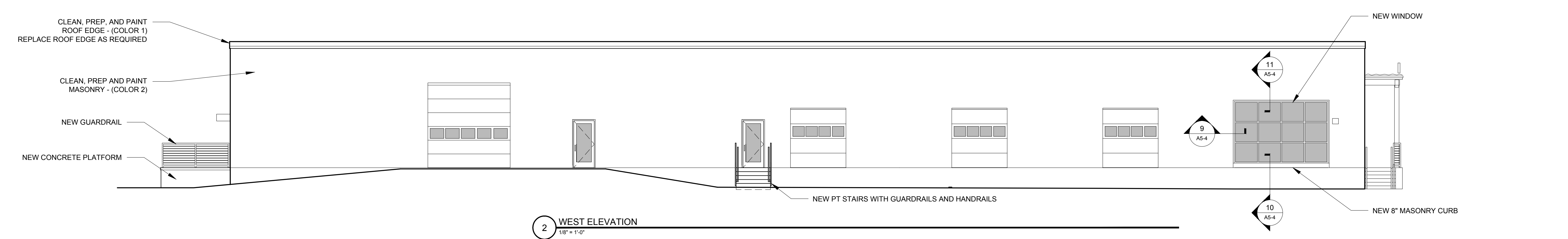


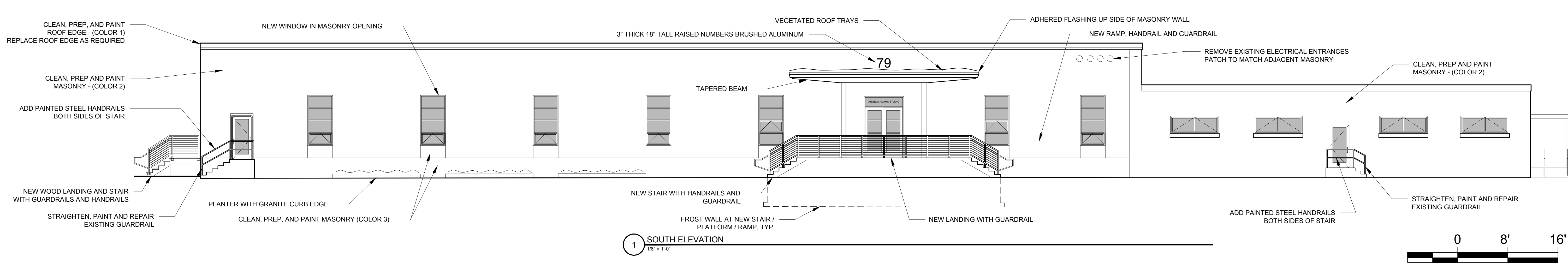
4 EAST ELEVATION  
 1/8" = 1'-0"



3 NORTH ELEVATION  
 1/8" = 1'-0"



2 WEST ELEVATION  
 1/8" = 1'-0"



1 SOUTH ELEVATION  
 1/8" = 1'-0"

REVISIONS:

DATE: MAY 09, 2014

PROJECT No. 1416

DRAWN BY: RJS / RRT

CHECKED BY: RJS

SCALE: AS NOTED

SHEET TITLE:

ELEVATIONS