

PACKAGED ROOFTOP AC UNIT PERFORMANCE SCHEDULE

TAD	TAD REMARKS	TAD REMARKS	TAD REMARKS	TAD REMARKS	ELECTRICAL REQUIREMENTS		TAD REMARKS	TAD REMARKS	TAD REMARKS	TAD REMARKS	TAD REMARKS	TAD REMARKS	TAD REMARKS
					HP	VA							
1A4	1 1/2 TON	1 1/2 TON	1 1/2 TON	1 1/2 TON	1 1/2 TON	1 1/2 TON	1 1/2 TON	1 1/2 TON	1 1/2 TON	1 1/2 TON	1 1/2 TON	1 1/2 TON	1 1/2 TON
AC1	1 1/2 TON	1 1/2 TON	1 1/2 TON	1 1/2 TON	1 1/2 TON	1 1/2 TON	1 1/2 TON	1 1/2 TON	1 1/2 TON	1 1/2 TON	1 1/2 TON	1 1/2 TON	1 1/2 TON

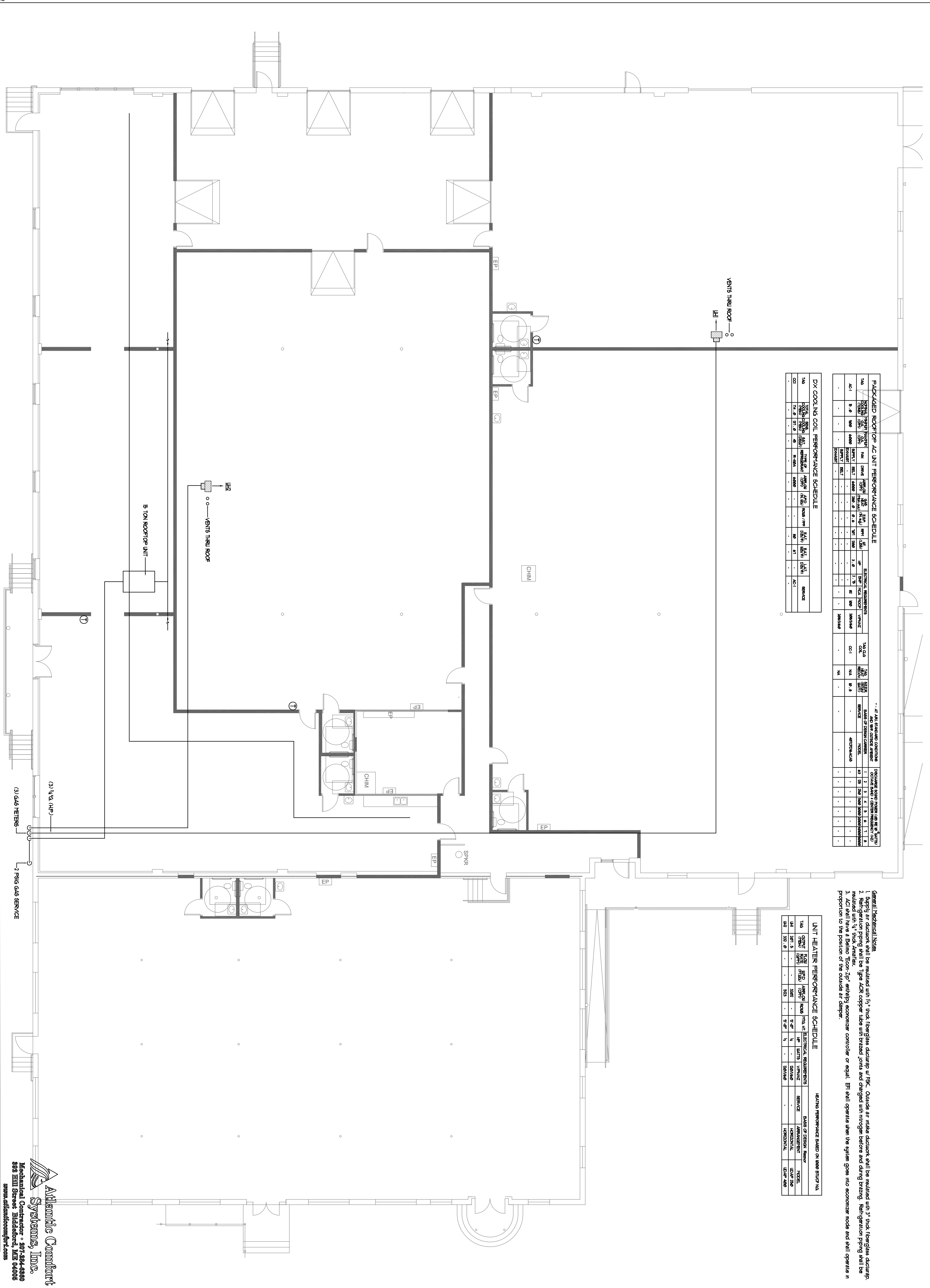
DX COOLING COIL PERFORMANCE SCHEDULE

TAD	TAD REMARKS	TAD REMARKS	TAD REMARKS	TAD REMARKS	TAD REMARKS	ELECTRICAL REQUIREMENTS		TAD REMARKS	TAD REMARKS	TAD REMARKS	TAD REMARKS	TAD REMARKS
						HP	VA					
1A4	1 1/2 TON	1 1/2 TON	1 1/2 TON	1 1/2 TON	1 1/2 TON	1 1/2 TON	1 1/2 TON	1 1/2 TON	1 1/2 TON	1 1/2 TON	1 1/2 TON	1 1/2 TON
AC1	1 1/2 TON	1 1/2 TON	1 1/2 TON	1 1/2 TON	1 1/2 TON	1 1/2 TON	1 1/2 TON	1 1/2 TON	1 1/2 TON	1 1/2 TON	1 1/2 TON	1 1/2 TON

HEATER PERFORMANCE SCHEDULE

TAD	TAD REMARKS	TAD REMARKS	TAD REMARKS	TAD REMARKS	ELECTRICAL REQUIREMENTS		TAD REMARKS	TAD REMARKS	TAD REMARKS	TAD REMARKS	TAD REMARKS
					HP	VA					
1A4	1 1/2 TON	1 1/2 TON	1 1/2 TON	1 1/2 TON	1 1/2 TON	1 1/2 TON	1 1/2 TON	1 1/2 TON	1 1/2 TON	1 1/2 TON	1 1/2 TON
AC1	1 1/2 TON	1 1/2 TON	1 1/2 TON	1 1/2 TON	1 1/2 TON	1 1/2 TON	1 1/2 TON	1 1/2 TON	1 1/2 TON	1 1/2 TON	1 1/2 TON

General/Typical Notes  
 1. Supply air ductwork shall be insulated with 1 1/2" thick fiberglass ductwrap w/EPK. Outside air intake ductwork shall be insulated with 3" thick fiberglass ductwrap.  
 2. Refrigeration piping shall be Type AC6 copper tube with brazed joints and charged with nitrogen before and during brazing. Refrigeration piping shall be insulated with 1/2" thick Armaflex.  
 3. AC1 shall have a Belimo 'Econ Zip' enthalpy economizer controller or equal. EPI shall operate when the system goes into economizer mode and shall operate in proportion to the position of the outside air damper.



170 Anderson Street

Portland, ME

Revisions

Job No.: 3645  
 Date: 9/22/14  
 Scale: 1/8" = 1'-0" or A.N.  
 Drawn by: SP Doel  
 Checked by: SP Doel

Drawing Title:  
**HYAC Floor Plan**

**M.1**

Atlantic Comfort  
 Systems, Inc.  
 Mechanical Contractor • 207-284-4390  
 882 Hill Street, Biddeford, ME 04005  
 www.atlanticcomfort.com