

LEGEND:  
 ○ NEW PIPE RISER UP OR DOWN  
 --- PROPOSED PIPE  
 --- EXISTING PIPE  
 ▲ SYSTEM RISER  
 ⊕ SWAY BRACING  
 ⊙ HYDRAULIC CALC. POINT

DESIGN & SYSTEM NOTES:  
 ALL SPRINKLER RISERS TO BE SCHEDULE 40 WITH APPROPRIATE FINISHING AND USE OF SPRINKLER HEADS SHALL BE IN ACCORDANCE WITH NFPA 13. DESIGNING SYSTEMS IN THIS SCHEDULE TYPE DESIGNED FOR HIGH RISE FIRE PROTECTION IS TO BEGIN WORK AT 8' MAX. TYP. NEAR OF BUILDING. DIMENSIONS AND LOCATIONS GIVEN FOR SPRINKLER EQUIPMENT FROM FLOOR TO SPRINKLER HEADS TO PROTECT WATER FILLED PIPING AND ON DAY AND ON FIRE ACTION SYSTEMS. OWNER IS RESPONSIBLE TO MAINTAIN THE SPRINKLER OF WATER-BASED FIRE PROTECTION SYSTEMS AND/ OR LINES, COES AND BRANCHES, AND/OR LOCAL ALL MECHANICAL, ELECTRICAL AND PLUMBING TRADES TO COORDINATE THEIR WORK WITH SPRINKLER CONTRACTOR. ALL ELECTRICAL WORK IS TO BE DONE BY OTHERS.

HEAD LEGEND:  
 GLOBE\* MODEL QLS601  
 K=5.6  
 1/2" WHITE PENDENT SEMI-RECESSED ESC  
 EXISTING\* (330/2700) K=5.6  
 1/2" BRASS UPRIGHT STANDARD RESPONSE 130 SQ.FT. MAX SPACING  
 GLOBE\* MODEL QLS601  
 K=5.6  
 1/2" BRASS UPRIGHT ON THE LINE STANDARD RESPONSE 130 SQ.FT. MAX SPACING  
 GLOBE\* MODEL QLS601  
 K=5.6  
 1/2" BRASS UPRIGHT ON THE LINE STANDARD RESPONSE 130 SQ.FT. MAX SPACING  
 GLOBE\* MODEL QLS601  
 K=5.6  
 1/2" BRASS UPRIGHT ON THE LINE STANDARD RESPONSE 130 SQ.FT. MAX SPACING  
 GLOBE\* MODEL QLS601  
 K=5.6  
 1/2" BRASS UPRIGHT ON THE LINE STANDARD RESPONSE 130 SQ.FT. MAX SPACING  
 GLOBE\* MODEL QLS601  
 K=5.6  
 1/2" BRASS UPRIGHT ON THE LINE STANDARD RESPONSE 130 SQ.FT. MAX SPACING  
 GLOBE\* MODEL QLS601  
 K=5.6  
 1/2" BRASS UPRIGHT ON THE LINE STANDARD RESPONSE 130 SQ.FT. MAX SPACING

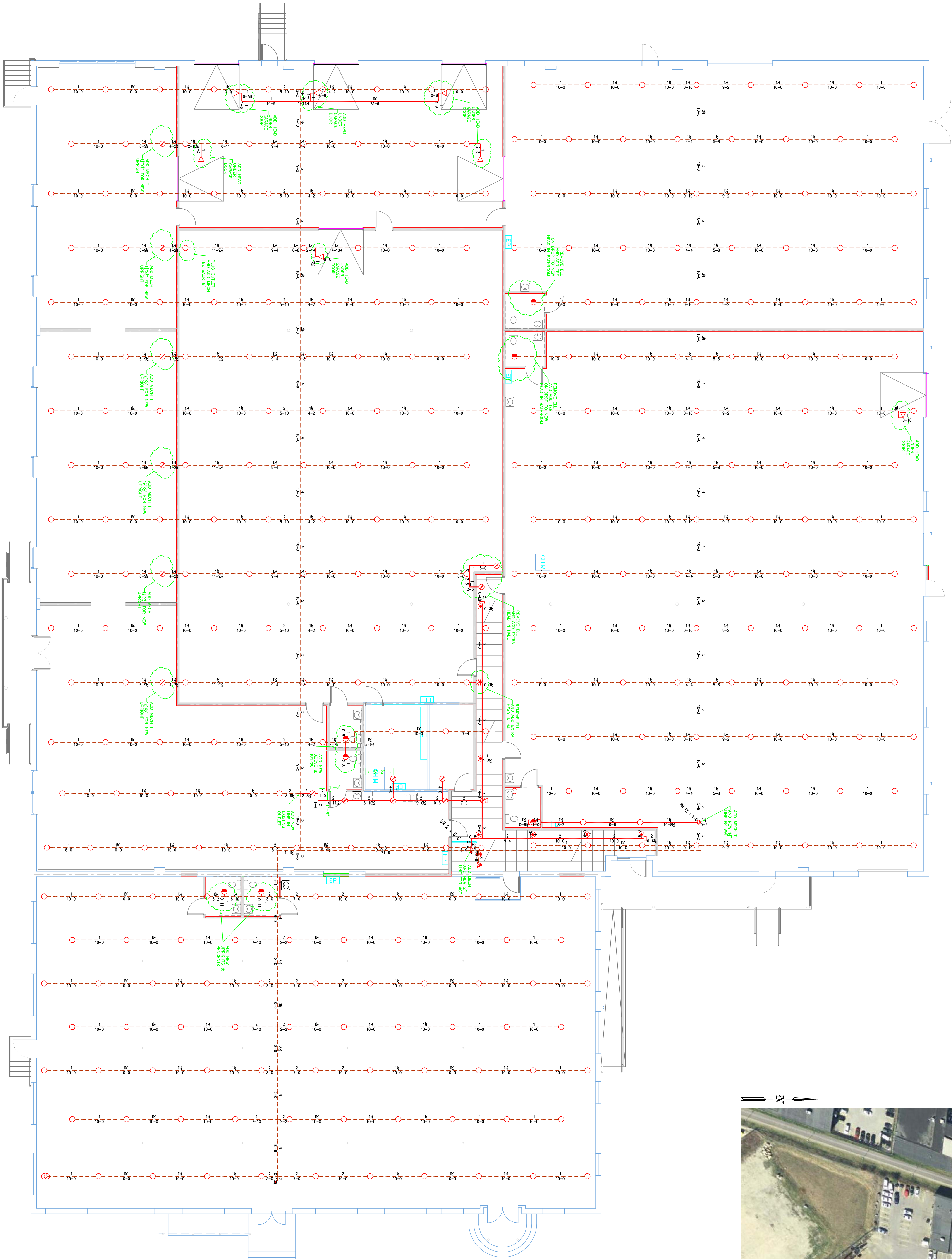
\*OR APPROVED EQUAL\*  
 TOTAL HEADS ON THIS SHEET: 44  
 SCALE: 1/8" = 1'-0"  
 NO. DATE: DESCRIPTION:  
 DATE: OCTOBER 21, 2014  
 DESIGNER: ED DOLAN (GMS# 515)  
 CHECKED BY: AL FOSS

LOCATION:  
 170 ANDERSON STREET  
 PORTLAND, ME

DRAWING TITLE:  
 RENOVATIONS TO  
 170 ANDERSON STREET  
 FIRE PROTECTION PLAN  
 (NFPA 13 2010ed.)  
 DRAWING NO.:  
 FP-01



**G** GROUND FLOOR (WET)  
 TOTAL PROTECTED AREA 31,000 SQ.FT.  
 SCALE 1/8" = 1'-0"



**P** PLOT PLAN  
 SCALE: N.T.S.

**PROJECT DESCRIPTION**

BUILDING CONST.:  
 THE BUILDING IS SINGLE LEVEL WAREHOUSE SLAB ON GRADE. CONSTRUCTION OF STEEL FRAMING, FIBERGLASS INSULATION, AND GYP BOARD CONSTRUCTION. STEEL EXISTING SPRINKLER PIPING AS SHOWN ON PLAN. BUILDING OCCUPANCY:  
 THE BUILDING WAS BUILT & DESIGNED FOR ORDINARY HAZARD WAREHOUSE STORAGE TYPE USAGE. ORDINARY HAZARD SPRINKLER SYSTEM DESIGN.  
 THE EXISTING SPRINKLER SYSTEM IS A WET PIPE SCHEDULED SYSTEM. THE SYSTEM DESIGNED FOR ORDINARY HAZARD WAREHOUSE STORAGE TYPE USAGE. WE ARE INSTALLING ADDITIONAL COVERAGE IN NOTED AREAS DUE TO NEW WAREHOUSE STORAGE BEING ADDED. NEW WAREHOUSE STORAGE BEING ADDED TO THE LINE OR ADDITIONAL LINES REQUIRED. THE CURRENT SPRINKLER HEADS ARE STANDARD RESPONSE. THE SPRINKLER SYSTEM WAS DESIGNED TO MEET APPLICABLE CODE REGARDING AN NFPA 13 2010ed. SYSTEM.

