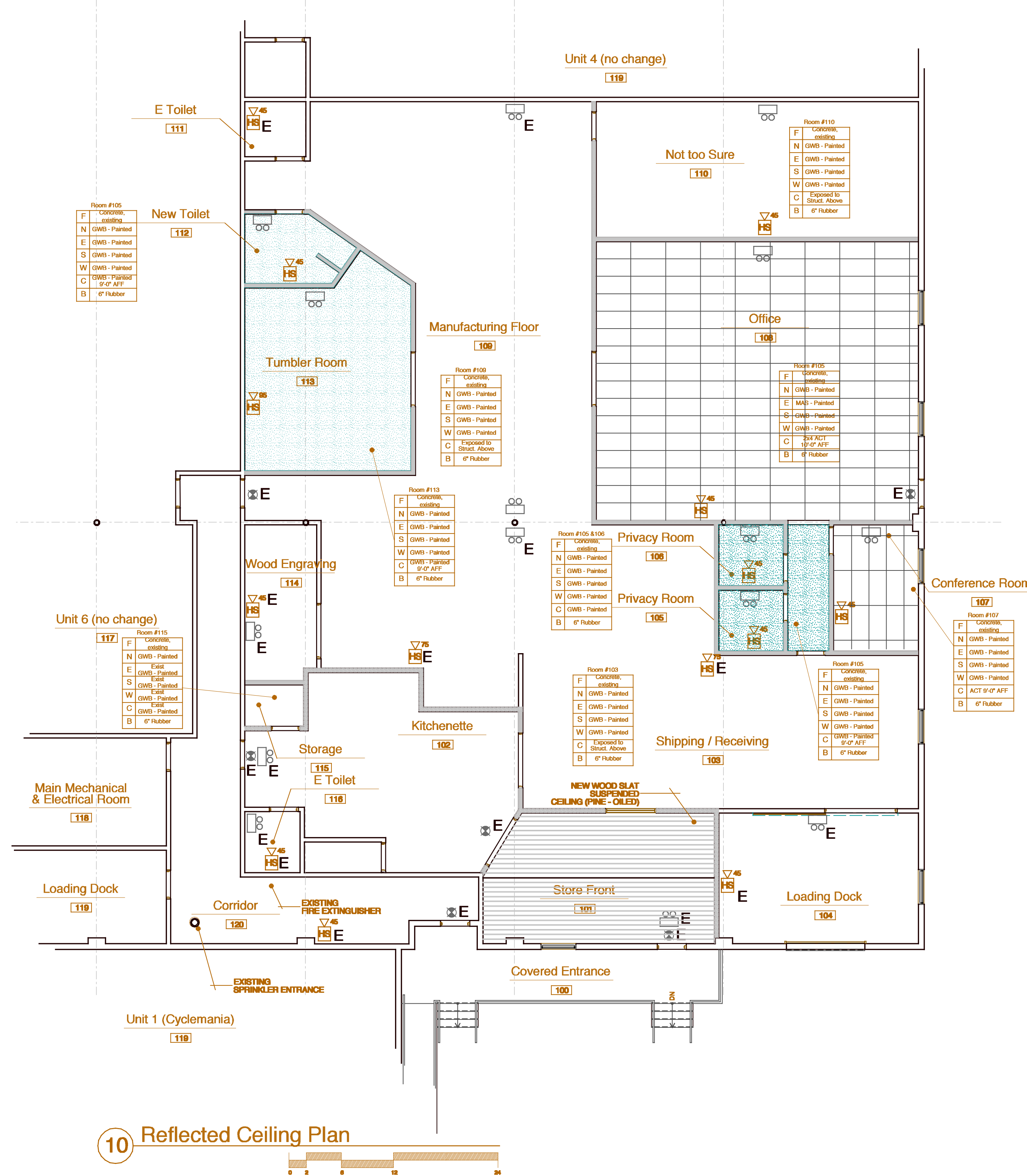


20 Life Safety Floor Plan

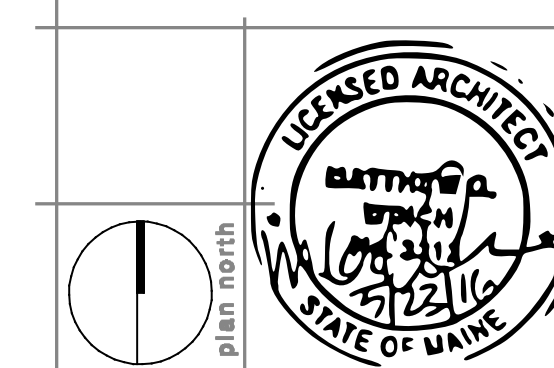


10 Reflected Ceiling Plan

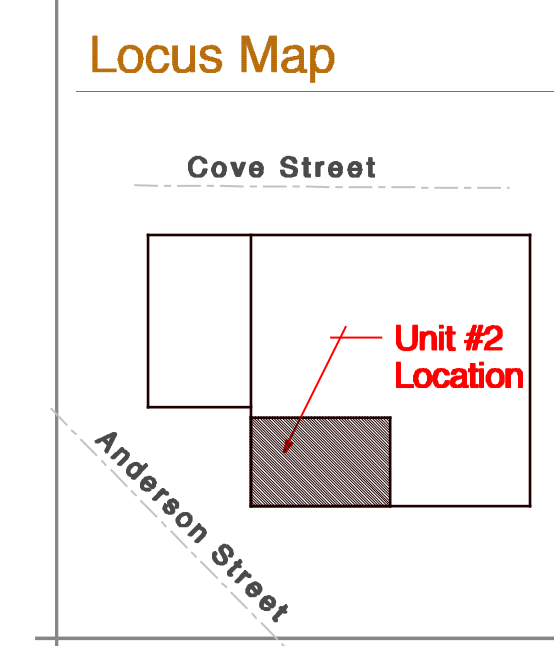
date	revision

project name  
**Zootility Tools**

project location  
170 Anderson Street  
Portland, Maine



- Key**
- COMBINATION EXIT / EMERGENCY LIGHT FIXT. AN (E) DENOTES EXISTING TO REMAIN.
  - HORN STROBE, AN (E) DENOTES EXISTING TO REMAIN.
  - EMERGENCY LIGHT, AN (E) DENOTES EXISTING TO REMAIN.
  - ILLUMINATED EXIT SIGN, AN (E) DENOTES EXISTING TO REMAIN.



date  
May 28, 2016

scale  
1/8" = 1'-0"

project #  
2015-006

drawing title  
**Reflected Ceiling & Life Safety Plan**

drawing number  
**A201**