

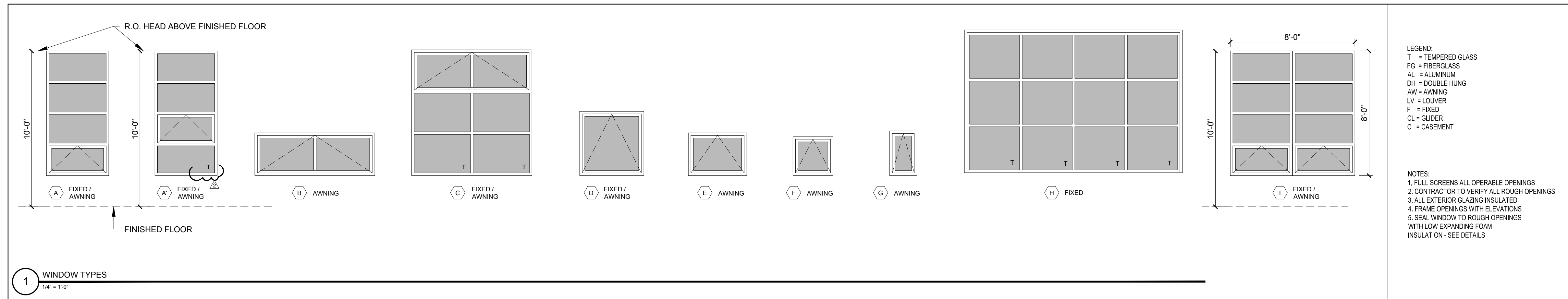
© 2014 RYAN SENATORE ARCHITECTURE

RENOVATIONS TO
170 ANDERSON STREET
PORTLAND, MAINE

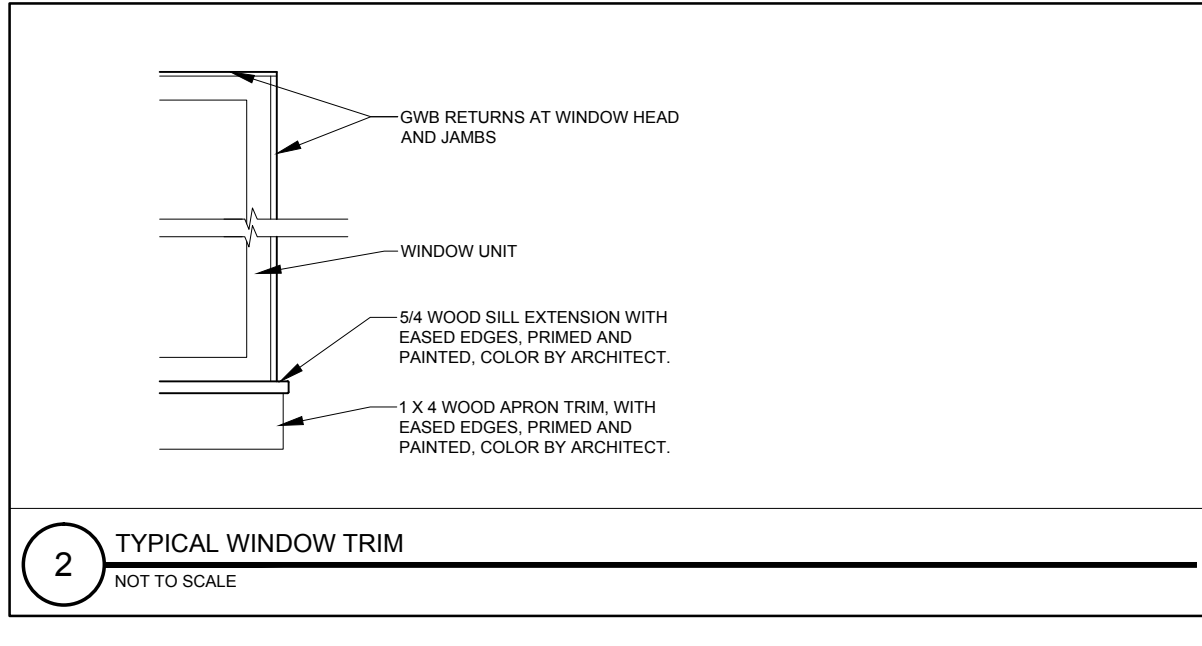


RYAN SENATORE
ARCHITECTURE
565 CONGRESS STREET, 1
SUITE 304
PORTLAND, MAINE 04101
207-655-5414
senatorearchitecture.com

CONSULTANTS:
STRUCTURAL:
Structural Integrity
77 Oak Street
Portland, ME 04101
207-774-4614



WINDOW SCHEDULE									
KEY	ACTION	ROUGH * OPENING (WH) VIF	R.O. HEAD HEIGHT	R.O. SIDING FINISH	R.O. SILL FINISH	DETAILS	REMARKS	FOR TEMPERED GLASS LOCATIONS SEE WINDOW ELEVATION TYPES	
								PTD	AL
A	FAW	4'-0" X 8'-0"	-	-	-	AL	PTD	4 LIGHT (1 ACTIVE AWNING)	
A'	FAW	4'-0" X 8'-0"	-	-	-	AL	PTD	4 LIGHT (1 ACTIVE AWNING, 1 UNIT TEMPERED)	
B	AW	7'-0" X 2'-0"	-	-	-	AL	PTD	DIVIDED 2 LIGHT AWNING	
C	FAW	7'-0" X 8'-11"	-	-	-	AL	PTD	DIVIDED 2 LIGHT AWNING (TOP) + 4 LIGHT FIXED (BELOW)	
D	FAW	4'-1 1/2" X 4'-1 1/2"	-	-	-	AL	PTD	SINGLE AWNING	
E	AW	2'-9" X 2'-0"	-	-	-	AL	PTD	SINGLE AWNING	
F	AW	2'-9" X 2'-0"	-	-	-	AL	PTD	SINGLE AWNING	
G	AW	1'-9" X 2'-10 1/2"	-	-	-	AL	PTD	SINGLE AWNING	
H	F	14'-0" X 9'-10"	-	-	-	AL	PTD	THERMALLY BROKEN STOREFRONT UNIT WITH MULL REINFORCING AS REQUIRED	
I	FAW	8'-0" X 8'-0"	-	-	-	AL	PTD	8 LIGHT (2 ACTIVE AWNING)	



WINDOW NOTES:

- * 1.) COORDINATE AND ADJUST ROUGH OPENING DIMENSIONS TO ACCOMMODATE SILL PAN FLASHING SYSTEM
- 2.) PROVIDE MULL REINFORCING AT ALL MULTI-UNIT WINDOWS AS REQUIRED TO ACHIEVE SPECIFIED DP-50 RATING
- 3.) ALL EXTERIOR GLAZING TO BE LOW-E ARGON FILLED INSULATED GLAZING UNITS

REVISIONS:
 REVISION #1 - 06/12/14
 REVISION #2 - 06/30/14

DATE: JUNE 4, 2014
 PROJECT No. 1416
 DRAWN BY: RJS / RRT
 CHECKED BY: RJS
 SCALE: AS NOTED

SHEET TITLE:
WINDOW SCHEDULE

A7-0