

### GENERAL NOTES

**1: DRAWING NOTES:**  
CONTRACTOR TO FURNISH AND INSTALL ALL NOTED LABOR AND MATERIALS UNLESS OTHERWISE NOTED.

**2: CODE COMPLIANCE:**  
ALL WORK SHALL CONFORM TO THE LATEST EDITION OF STATE, LOCAL AND OTHER CODES WHICH APPLY TO THIS PROJECT OR HAVE JURISDICTION.

**3: COORDINATION:**  
IT IS THE RESPONSIBILITY OF THE CONTRACTOR TO COORDINATE ALL DISCIPLINES AND TRADES SO THAT ALL BUILDING SYSTEMS AND COMPONENTS CAN BE ASSEMBLED WITHOUT CONFLICTS. IN THE EVENT THAT THE CONSTRUCTION DOCUMENTS DEFINE CONDITIONS WHICH PROHIBIT, OR MAY PROHIBIT, SUCH ASSEMBLY, THE CONTRACTOR SHALL BRING TO THE ARCHITECTS ATTENTION IN WRITING AND IN A TIMELY FASHION, SUCH CONDITION. THE CONTRACTOR SHALL NOT PROCEED WITH RELATED WORK WITHOUT A WRITTEN RESOLUTION.

**4: DISCREPANCIES & CLARIFICATIONS:**  
THIS PROJECT INVOLVES THE FIT-UP OF AN EXISTING BUILDING. EXISTING DIMENSIONS SHOWN ON THE DRAWINGS ARE BELIEVED TO BE ACCURATE, BUT CANNOT BE GUARANTEED. MEASURE AND VERIFY DIMENSIONS IN FIELD PRIOR TO FABRICATION AND CONSTRUCTION. IT IS THE RESPONSIBILITY OF THE CONTRACTOR TO BRING TO THE ARCHITECTS ATTENTION IN WRITING, ANY DISCREPANCIES OR AMBIGUITIES IN THE DRAWINGS AND/OR SPECIFICATIONS. THE CONTRACTOR SHALL NOT PROCEED WITH RELATED WORK WITHOUT A WRITTEN RESOLUTION OR CLARIFICATION FROM THE ARCHITECT.

**5: LAYOUT:**  
UNLESS INDICATED OTHERWISE, CENTER WALL FRAMING AND PARTITION FRAMING ON COLUMN LINES. FLOOR PLANS UNLESS INDICATED ARE TO CENTER OF FRAMING, FACE OF CONCRETE, FACE OF CMU, OR FROM COLUMN CENTERLINES. UNLESS INDICATED OTHERWISE, DOORS AND WINDOWS ARE DIMENSIONED TO CENTERLINES UNLESS OTHERWISE NOTED.

**6: CENTERING:**  
UNLESS INDICATED OTHERWISE, CENTER BUILDING ELEMENTS WITHIN OR BETWEEN OTHER BUILDING ELEMENTS WHEN CONDITIONS OF THE DRAWINGS INDICATE OR IMPLY THAT SUCH IS THE INTENT. WHETHER OR NOT DIMENSIONS ARE INCLUDED.

**7: SYMMETRY:**  
WHERE CONDITIONS OR THE DRAWINGS INDICATE OR IMPLY THAT SYMMETRY IS INTENDED, INFORMATION PROVIDED AT ONE SIDE APPLIES EQUALLY TO BOTH SIDES, UNLESS CONDITIONS CLEARLY PRECLUDE SUCH APPLICATION.

**8: ACCESSIBILITY:**  
ALL HANDICAPPED ACCESSIBLE BATHROOMS, GRAB BARS, AND DOOR OPENINGS SHALL MEET THE REQUIREMENTS OF TITLE 04-34B, CHAPTER 5 OF THE MAINE HUMAN RIGHTS COMMISSION TITLE LATEST EDITION AND THE DEPARTMENT OF JUSTICE ADA STANDARDS FOR ACCESSIBLE DESIGN.

**9: DRAWING SCALES:**  
WORK FROM THE GIVEN DIMENSIONS ONLY. SCALE IS INDICATED ON THE DRAWINGS FOR CONVENIENCE ONLY. IT IS NOT INTENDED THAT INFORMATION BE DETERMINED BY SCALING THE DRAWINGS SINCE SOME ITEMS MAY NOT BE TO SCALE.

**10: WATER-RESISTANT GWB:**  
INSTALL WATER-RESISTANT GYPSUM WALL BOARD IN ALL REST ROOMS & TOILET ROOMS OR AT ANY WALL WITH PLUMBING FIXTURES.

**10A: HIGH IMPACT GWB:**  
INSTALL HIGH IMPACT GYPSUM WALL BOARD IN ALL STAIRWELLS

**11: INTERIOR ELEVATIONS:**  
INTERIOR ELEVATIONS MAY BE REVERSED FROM AND/OR SIMILAR TO ACTUAL CONDITIONS. SEE FLOOR PLANS FOR WINDOW AND DOOR QUANTITIES AND LOCATIONS, FOR CASEWORK LAYOUTS, AND FOR MONITOR LOCATIONS.

**12: BUILDING INSULATION:**  
PROVIDE AS INDICATED IN WALL SECTIONS AND IN ACCORDANCE WITH PARTITION TYPES, WHETHER OR NOT SHOWN IN DETAILS AND OTHER DRAWINGS. FOR CLARITY, INSULATION MAY NOT BE SHOWN IN SOME CASES, EVEN IF IT IS TO BE PROVIDED.

**13: BLOCKING:**  
INSTALL BLOCKING BEHIND ALL SURFACE-APPLIED FIXTURES, TRIM, CASEWORK, SHELVES, BRACKETS, TOILET ACCESSORIES, CHAIR RAILS, PICTURE RAILS, GRAB BARS, BASE MOLDINGS, AND AS OTHERWISE REQUIRED, WHEN SUCH ITEMS ARE APPLIED ON STUD WALLS.

**14: PENETRATIONS AT STRUCTURAL MEMBERS:**  
BEFORE PENETRATING JOISTS, BEAMS OR OTHER STRUCTURAL MEMBERS, CONSULT WITH THE ARCHITECT.

**15: DAMAGED WORK:**  
BUILDING OR SITE COMPONENTS WHICH ARE AFFECTED BY NEW WORK, DEMOLITION, OR WHICH MAY BE DAMAGED BY THE GENERAL CONTRACTOR OR ANY SUB-CONTRACTOR SHALL BE REPLACED OR RESTORED TO ORIGINAL CONDITION AND COLOR TO MEET THE APPROVAL OF THE ARCHITECT.

**16: UTILITIES:**  
VERIFY THE SIZE AND LOCATION OF ALL UNDERGROUND UTILITIES AND REPORT ANY DISCREPANCIES TO THE ARCHITECT IN WRITING. DO NOT PROCEED WITH WORK UNTIL THE DISCREPANCY HAS BEEN RESOLVED TO THE SATISFACTION OF THE ARCHITECT.

**17: RATED CONSTRUCTION:**  
PROVIDE RATED CONSTRUCTION AS REQUIRED BY CODE, AS SPECIFIED, AND AS INDICATED ON DRAWINGS. IT IS THE RESPONSIBILITY OF THE CONTRACTOR TO PROVIDE AND INSTALL ALL COMPONENTS REQUIRED TO CREATE SUCH RATED CONSTRUCTION, REGARDLESS OF WHETHER OR NOT SUCH COMPONENTS ARE INDICATED. PROVIDE CONTINUITY OF SUCH RATED CONSTRUCTION AROUND AND BETWEEN SPACES, INCLUDING AT CHASES AND AT FLOORS, TO MAINTAIN COMPLETE SEPARATIONS, EVEN IF NOT SPECIFICALLY INDICATED.

**18: SHOP DRAWINGS:**  
SUBMIT SHOP DRAWINGS TO THE ARCHITECT FOR REVIEW PRIOR TO FABRICATIONS. SUBMITTALS REQUIRED INCLUDE, BUT ARE NOT LIMITED TO, SHOP DRAWINGS FOR ALL PREFABRICATED CONCRETE, STEEL, MILLWORK & SIGNAGE, SAMPLES OF ALL PROPOSED PAINTS, METALS, WALL COVERINGS, LAMINATES, SOLID SURFACE MATERIALS, CERAMIC TILE, AND HARDWARE. SUBMIT MANUFACTURERS DATA FOR ALL LIGHTING SYSTEMS, AND HARDWARE.

**19: PERMITS:**  
THE GENERAL CONTRACTOR SHALL OBTAIN AND PAY FOR ANY BUILDING PERMITS REQUIRED AND CARRY ANY INSURANCE COVERAGES REQUIRED.

**20: INTERIOR FINISHES:**  
ALL INTERIOR FINISHES AND FURNISHINGS ARE TO BE CLASS 'A' FIRE-RATED AND ARE TO COMPLY WITH SECTION 800.0 BOCA (INTERIOR FLAME SPREAD).

**21: ELECTRICAL DESIGN:**  
REFER TO ELECTRICAL DRAWINGS AND SPECIFICATIONS

**22: WASTE REMOVAL:**  
THE GENERAL CONTRACTOR SHALL DISPOSE OF ALL WASTE AND DEBRIS OFF THE PREMISES.

**23: LANDLORD COORDINATION:**  
THE GENERAL CONTRACTOR MUST COORDINATE WITH THE BUILDING OWNER ALL ACTIVITIES INCLUDING BUT NOT LIMITED TO WORK WHICH WILL GENERATE EXCESSIVE NOISE AND MODIFICATION TO UTILITIES. WORK MUST NOT INTERFERE WITH EXISTING SMOKE DETECTORS, ALARMS OR BUILDING SYSTEM MANAGEMENT.

**24: TEMPORARY FACILITIES:**  
PROVIDE ALL TEMPORARY FACILITIES AND SERVICES, CONSTRUCTION AND SUPPORT FACILITIES, AND SECURITY AND PROTECTION AS NEEDED TO PROTECT NEW AND EXISTING CONSTRUCTION FOR THE DURATION OF A COMPLETE INSTALLATION.

**25: FINAL CLEANING:**  
EMPLOY EXPERIENCED WORKERS FOR FINAL CLEANING. CLEAN EACH SURFACE TO THE CONDITION EXPECTED IN A COMMERCIAL BUILDING CLEANING PROGRAM.

**26: MANUFACTURERS INSTRUCTIONS:**  
ALL MATERIALS & EQUIPMENT SHALL BE INSTALLED ACCORDING TO MANUFACTURERS SPECIFICATIONS.

**27: GUARANTEE:**  
GUARANTEE ALL MATERIALS AND WORKMANSHIP SHALL BE GUARANTEED FOR A PERIOD OF ONE YEAR FROM THE DATE OF FINAL ACCEPTANCE UNLESS OTHERWISE SPECIFIED FOR A LONGER PERIOD OF TIME ON A CERTAIN ITEM.

**28: ASBESTOS:**  
ALL MATERIAL USED FOR THE CONSTRUCTION OF THIS PROJECT, WHETHER BUILDING MATERIALS OR APPURTENANCES, SHALL BE NON-ASBESTOS CONTAINING MATERIAL.

**29: HAZARDOUS FUMES:**  
THE GENERAL CONTRACTOR SHALL CONFIRM THAT ALL MATERIAL AND FINISHES SPECIFIED AND THEIR FABRICATION OR INSTALLATION WILL NOT RELEASE FUMES OR AROMAS DURING CONSTRUCTION WHICH MAY BE A HAZARD OR NUISANCE TO PERSONNEL.

**30: PEST CONTROL:**  
SEAL AND CAULK AROUND ALL PENETRATIONS, CRACKS AND CREVICES AND ANY OPENINGS CAPABLE OF HARBORING INSECTS/RODENTS.

**31: EXPOSED UTILITIES:**  
ALL EXPOSED UTILITY WIRES AND PIPES (ELECTRICAL, PLUMBING, ETC.) SHALL BE INSTALLED IN A WAY THAT DOES NOT OBSTRUCT OR PREVENT THE CLEANING OF FLOORS, WALLS, AND CEILING AREAS. THEY SHALL BE INSTALLED AT MINIMUM 6" OFF FLOORS AND 1" OFF WALLS, CEILING AND ADJACENT PIPES.

**32: OWNER SUPPLIED EQUIPMENT:**  
EQUIPMENT SUPPLIED BY THE OWNER AND INSTALLED BY THE GENERAL CONTRACTOR SHALL BE INSTALLED IN ACCORDANCE WITH EQUIPMENT INFORMATION AND SPECIFICATIONS ARE TO BE THE MOST CURRENT AVAILABLE AT THE TIME OF DOCUMENTATION PREPARATION. THE GENERAL CONTRACTOR SHALL BE RESPONSIBLE FOR VERIFYING WITH THE OWNER THE EXACT DIMENSIONS AND EQUIPMENT CONNECTION REQUIREMENTS (INCLUDING ELECTRICAL CIRCUIT REQUIREMENTS) OF EQUIPMENT TO BE SUPPLIED. THE GENERAL CONTRACTOR SHALL MAKE ALL FINAL CONNECTIONS AS NOTED ON THE DRAWINGS. INSTALL THE SET UP IN WORKING ORDER, CHECK WARRANTIES, TEST AND NOT VOID WARRANTIES. THE GENERAL CONTRACTOR SHALL COORDINATE WITH THE OWNER DELIVERY, STORAGE AND INSTALLATION OF ALL OWNER SUPPLIED EQUIPMENT. THE GENERAL CONTRACTOR SHALL STORE EQUIPMENT IF REQUESTED BY THE OWNER UNTIL INSTALLATION. SEE DRAWINGS FOR OTHER OWNER SUPPLIED GENERAL CONTRACTOR INSTALLED ITEMS.

**33: FIRE PROTECTION NOTE:**  
EXISTING SPRINKLERHEADS, ALARM SYSTEM AND DETECTORS ARE TO BE MODIFIED TO CONFORM WITH THE PROPOSED PLAN. COORDINATE WITH THE ARCHITECT, ANY MODIFICATION OR LOCATIONS WHERE EXISTING SYSTEMS ARE AFFECTED BY THE NEW DESIGN.

**34: SOILS AT FOOTINGS:**  
REPORT THE LOCATION OF ALL UNSUITABLE SOILS AND MATERIALS BELOW ANTICIPATED LEVEL OF FOOTING TO THE ARCHITECT PRIOR TO THE SETTING OF FORMS.

**35: ACCESS PANELS:**  
CONTRACTOR IS RESPONSIBLE FOR COORDINATING QUANTITY AND LOCATION OF ALL REQUIRED ACCESS PANELS FOR ALL MEP CONTROLS, CLEANOUTS, DAMPERS, PULL BOXES, ETC.

**36: EXISTING HAZARDOUS MATERIALS**  
ALL HAZARDOUS MATERIALS INCLUDING BUT NOT LIMITED TO ASBESTOS AND LEAD PAINT ARE TO BE HANDLED, ENCAPSULATED, ABATED AND DISPOSED OF IN ACCORDANCE WITH ANY AND ALL FEDERAL, STATE AND LOCAL REQUIREMENTS AND REGULATIONS.

**37: INDUSTRY STANDARDS:**  
ALL WORK SHALL BE PERFORMED IN ACCORDANCE WITH INDUSTRY STANDARDS. STANDARDS INCLUDE BUT ARE NOT LIMITED TO THE FOLLOWING:

- AAMA - AMERICAN ARCHITECTURAL MANUFACTURERS ASSOCIATION
- ACI - AMERICAN CONCRETE INSTITUTE
- ANSI - AMERICAN NATIONAL STANDARDS INSTITUTE
- ASTM - AMERICAN SOCIETY FOR TESTING AND MATERIALS
- AWI - ARCHITECTURAL WOODWORK INSTITUTE
- AWS - AMERICAN WELDING SOCIETY
- IGMA - INSULATING GLASS MANUFACTURERS ALLIANCE
- NAAMM - NATIONAL ASSOCIATION OF ARCHITECTURAL METAL MANUFACTURERS
- NRC-A - NATIONAL ROOFING CONTRACTORS ASSOCIATION
- NCCA - NATIONAL TILE CONTRACTORS ASSOCIATION
- SMACNA - SHEET METAL AND AIR CONDITIONING NATIONAL ASSOCIATION
- WDMA - WINDOW AND DOOR MANUFACTURERS ASSOCIATION

### ABBREVIATIONS

A/C AIR CONDITIONING  
ACT ACoustical CEILING TILE  
AD AREA DRAIN  
ADMAG AMERICANS WITH DISABILITIES ACT  
ADN ADHOC  
ADD ABOVE FINISHED FLOOR  
AHU AIR HANDLING UNIT  
AL ALUMINUM  
ARCH ARCHITECT/ARCHITECTURAL  
AWP ACOUSTIC WALL PANEL

B/B TO BLS BACK-TO-BACK ANGLES  
BL B.L.O.G.C. BASE BUILDING GENERAL CONTRACTOR  
BLDG BUILDING  
BLCK BLOCKING  
BSMT BASEMENT  
BTWN BETWEEN

C/C COURSE (MASONRY)  
CER CERAMIC  
CGH CORNER GUARD  
CH COAT HOOK  
CJ CONTROL JOINT  
CL CENTER LINE  
CLG CEILING  
CMU CONCRETE MASONRY UNIT  
COL COLUMN  
CO CLEAN OUT  
CON CONNECTION  
CONC CONCRETE  
COND CONDITION  
CONN CONNECTION  
CONSTR CONSTRUCTION  
CONT CONTINUOUS  
CORR CORROSION  
CT CERAMIC TILE  
CUH CABINET UNIT HEATER

D/BL DOUBLE  
DF DRINKING FOUNTAIN  
DIAM DIAMETER  
DIFF DIFFUSER  
DN DOWN  
DRY DRY  
DISP DRY STAND PIPE  
DWG DRAWING

E/EA EACH  
ELEV ELEVATION  
ELEC ELECTRICAL  
ELEV ELEVATOR  
ENTR ENTRANCE  
EQ EQUIPMENT  
EXPB EXPANSION BOLT  
EXT EXTERIOR  
ETHY ETHYLENE PROPYLENE DIENE MONOMER  
EWC ELECTRIC WATER COOLER

F/FAHREHNEIT  
FB FLAT BAR  
FE FIRE EXTINGUISHER AND CABINET  
FD FLOOR DRAIN  
FE FIRE EXTINGUISHER  
FECE FIRE EXTINGUISHER CABINET  
FIN FINISH  
FLOOR FLOOR  
F/BR FACE OF BRICK  
F/FC FACE OF FINISH  
F/FOS FACE OF FINISH  
F/FOS FACE OF FINISH  
F/SOIL SOIL  
F/FRG FIBER REINFORCED GYPSUM  
FRN FIN TUBE RADIATION  
FH FUME HOOD

G/GA GAUGE  
GALV GALVANIZED  
GB GRAB BAR  
GC GENERAL CONTRACTOR  
GFI GROUNDING INTERRUPTER  
GL GLASS/GLAZING/GLAZED  
GLUE GLUED  
GND GROUND  
GWB GYPSUM WALL BOARD

H/HOSE HOSE  
HC HANDICAP  
HLLW HOLLOW METAL  
HORIZ HORIZONTAL  
H/P HIGH POINT/HIGH POINT HEAT PUMP  
HR HOUR  
HW HOT WATER  
HVAC HEATING VENTILATION AIR CONDITIONING

I/ID INSIDE DIMENSION/INSIDE DIAMETER  
IN INCHES  
INFO INFORMATION  
INSUL INSULATION

J/ST JOIST  
JT JOINT

K/ KD KILN-DRIED  
RIP 1000 POUNDS

L/LAB LABORATORY  
LAM LAMINATED  
LB POUND  
LH LEFT HAND  
LCC LEAD COATED COPPER

M/MACHINE MACHINE  
M/MAS MASONRY  
M/MATL MATERIAL  
MAX MAXIMUM  
M/MD MEDIUM DENSITY OVERLAY  
MECH MECHANICAL  
MEMB MEMBRANE  
MEZZ MEZZANINE  
MFR MANUFACTURER  
MIN MINIMUM  
MISC MISCELLANEOUS  
MO MOUNTED  
M/TL METAL  
MB MARKER BOARD

N/NORTH NORTH  
# NUMBER  
NIC NOT IN CONTACT  
NOM NOMINAL DIMENSION  
NTS NOT TO SCALE

O/OVER OVER  
ON ON CENTER  
OD OUTSIDE DIAMETER/OUTSIDE DIMENSION  
OFF OFFICE  
OPN OPENING  
OPP OPPOSITE  
OSH OPERATING HAND  
OSB ORIENTED STRAND BOARD  
OUNC OUNCE

P/PBOIC PURCHASED BY OWNER INSTALLED BY CONTRACTOR  
PC PRECAST  
PL PLASTIC  
PLAM PLASTIC LAMINATE  
PR PAPER  
PRE FAB PREFABRICATED  
PRIV PRIVATE  
PRM PRIMER  
P/PS POUNDS PER SQUARE FOOT  
P/PSI POUNDS PER SQUARE INCH  
PTD PARTITION  
PTN PARTITION  
POLY VINYL CHLORIDE  
PW PLYWOOD  
PRES TREATED PERFORATED

Q/QTY QUANTITY  
Q/QT QUARTER

R/RAD RADIUS  
R/BA RUBBER BASE  
R/CP REFLECTED CEILING PLAN  
R/DR ROOF DRAIN  
REBAR REINFORCING BAR  
RENF REINFORCED  
REQ REQUIRED  
RES RESERVE  
RM ROOM  
RO ROUGH OPENING  
RO RIGHT OF WAY

S/SOUTH SOUTH  
SCHED SCHEDULE  
SF SQUARE FEET  
SFC SPECIFICATION  
S/SF SQUARE FEET  
SS STAINLESS STEEL  
S/SS STAINLESS STEEL  
S/STD STANDARD  
S/STOR STORAGE  
S/STRUCT STRUCTURAL  
S/SUSP SUSPENSION

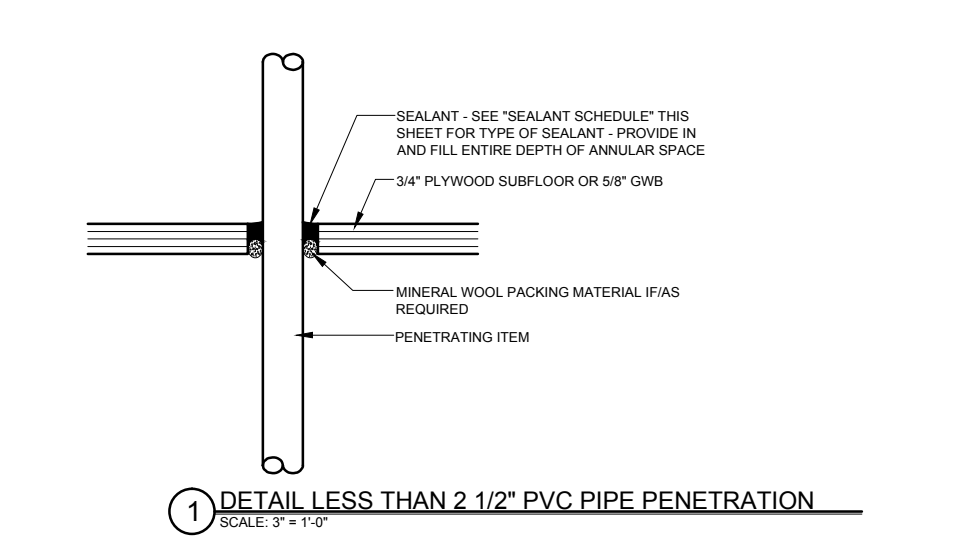
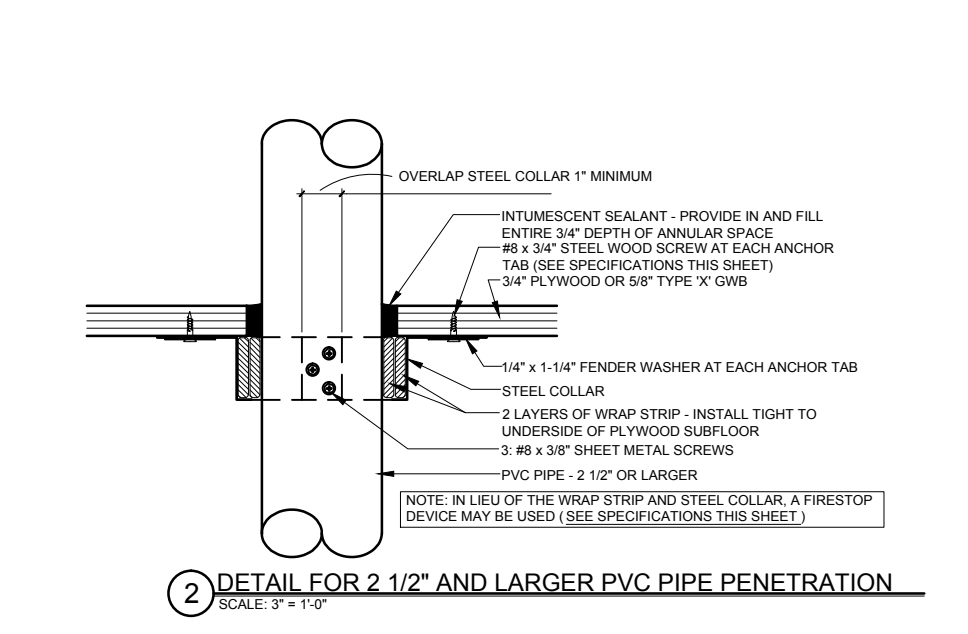
T/TONGUE/GROOVE  
TEL TELEPHONE  
THK THICK  
TOP TOP OF DECK  
TOS TOP OF STEEL  
TYP TYPICAL  
TV TELEVISION  
TACK TACK BOARD  
TOC TOP OF CONCRETE

U/UL UNDERWRITERS LABORATORIES, INC.  
UV ULTRAVIOLET

V/VCT VINYL COMPOSITION TILE  
VERT VERTICAL  
VF VERIFY IN FIELD  
VOL VOLUME

W/WEST WEST  
WO WITH OUT  
WJ JOINT  
WF WOOD  
WF WIDE FLANGE  
WP WORK POINT  
WT WEIGHT

### FIRESTOPPING DETAILS



**SEALANT SCHEDULE:**

**W/RASTIP STRIP:** 1/4" THICK x 1 1/2" MINIMUM WIDTH INTUMESCENT MATERIAL WITH PLASTIC FILM FACING BOTH SIDES. TEMPORARILY SECURE WITH MAKING TAPE. SPECIFIED TECHNOLOGIES INC. (STI) "SPECSEAL RED W/RASTIP STRIP OR "SPECSEAL BLUE W/RASTIP STRIP" OR EQUAL.

**STEEL COLLAR:** WRAP STRIP MANUFACTURER'S STEEL COLLAR, FABRICATED FROM .016 INCH THICK GALVANIZED SHEET STEEL. WIDTH TO MATCH WRAP STRIP (1 1/2" MINIMUM), WITH 1 INCH x 2 INCH ANCHOR TABS AND RETAINER TABS. ANCHOR TABS TO BE SYMMETRICALLY OPPOSED AROUND COLLAR. PROVIDE 3 TABS FOR 2 1/2" AND 3" PIPE, PROVIDE 4 TABS FOR 4" PIPE.

**INTUMESCENT SEALANT:** ONE-PART, INTUMESCENT, LATEX ELASTOMER TESTED TO ASTM E 814. MINIMUM EXPANSION OF 3x AT 1000°F. 3M "FIRE BARRIER SEALANT CP 25WB" OR EQUAL.

**FIRESTOP SEALANT:** SINGLE COMPONENT NONCOMBUSTIBLE FIRE RATED SEALANT TESTED TO ASTM E 814. TESTED TO 2000°F. "BOSS 150 FIRESTOP/CONTACT SEALANT" MANUFACTURED BY ACCUMETRIC, LLC, OR EQUAL.

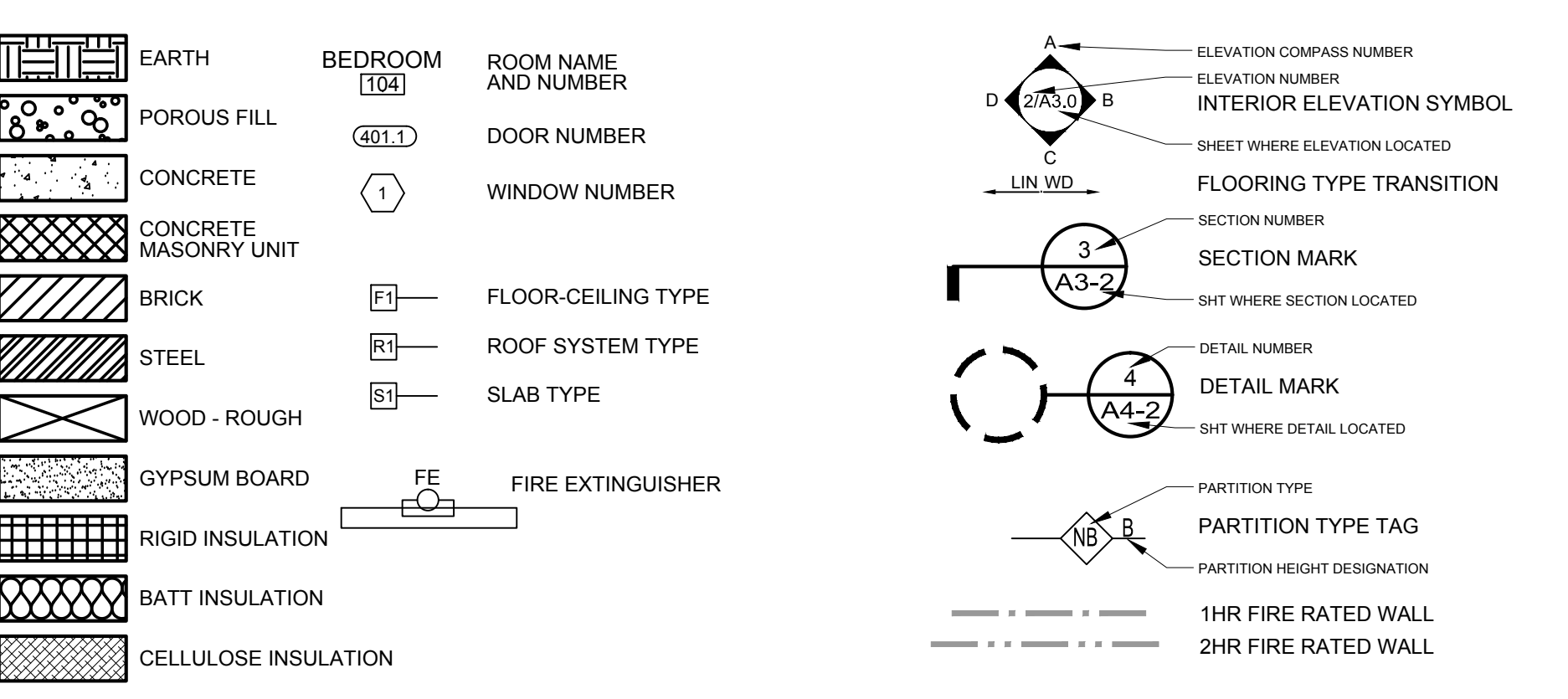
**SEALANT SCHEDULE:**

**INTUMESCENT SEALANT:** PROVIDE AT ALL PENETRATIONS THROUGH RATED CONSTRUCTION FOR PENETRATING ITEMS INCLUDING BUT NOT LIMITED TO PVC PIPE, ROOF LEADER PIPES, GAS PIPES & LINES, SPRINKLER PIPES, ELECTRICAL & COMMUNICATIONS CABLES & WIRES, AND ALARM SYSTEM WIRES. DO NOT USE INTUMESCENT SEALANT AT DOMESTIC HOT WATER OR HYDRONIC HEATING SYSTEM PIPES.

**FIRESTOP SEALANT:** PROVIDE AT ALL PENETRATIONS THROUGH RATED CONSTRUCTION FOR PENETRATING ITEMS INCLUDING DOMESTIC HOT AND COLD WATER PIPES AND HYDRONIC HEATING SYSTEM PIPES.

**NOTE:**  
FOR LOCATIONS OF RATED CONSTRUCTION, SEE ARCHITECTURAL FLOOR PLANS AND SECTIONS

### DRAWING LEGEND



### WALL TYPES

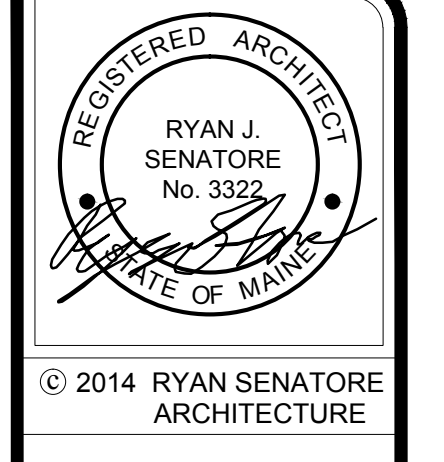
- GENERAL PARTITION NOTES:
- 1.) AT ALL FIRE WALLS, GENERAL CONTRACTOR TO CONFIRM THAT ALL WALLS ARE TIGHT TO ROOF AND/OR FLOOR DECK ABOVE. PROVIDE HEAD DEFLECTION SLIP TRACKS AT NON BEARING METAL STUD FRAMED WALLS. G.C. TO EXTEND EXISTING WALLS CONVERTED TO FIRE WALLS UP TIGHT TO DECK ABOVE SHOULD THE EXISTING CONDITION REQUIRE.
  - 2.) G.C. TO PROVIDE FIRE CAULKING AND BLOCKING AS REQUIRED AT ALL TOP OF WALLS AT CORRUGATED DECK FLUTES AND VOIDS.
  - 3.) REFER TO STRUCTURAL DRAWINGS FOR STUD SIZE AND SPACING
  - 4.) INSTALL WATER-RESISTANT GYPSUM WALL BOARD IN ALL RESTROOMS AND TOILET ROOMS WALLS AND CEILING, AND AT ANY WALL WITH PLUMBING FIXTURES.
  - 5.) ALL PARTITION TYPES WITH AN INSULATION COMPONENT TO BE ACOUSTICALLY SEALED.
  - 6.) COORDINATE FINISHES WITH ROOM FINISH SCHEDULE.
  - 7.) PENETRATIONS THROUGH RATED WALLS AND CEILING ASSEMBLIES SHALL HAVE SEALANTS CONFORMING TO RATING REQUIREMENTS.
  - 8.) CONTRACTOR TO VERIFY WALL LOCATIONS IN FIELD AND COORDINATE WITH EXISTING PIPE LOCATIONS, NOTIFY ARCHITECT OF ANY DISCREPANCIES.
  - 9.) ALL PARTITIONS TYPE NA-B, UNLESS OTHERWISE NOTED.
  - 10.) HOLD BOTTOM EDGE OF GWB UP FROM CONCRETE TYPICAL
  - 11.) PROVIDE MID SPAN METAL BLOCKING AT ALL WALLS OVER 9' TALL
  - 12.) PROVIDE SOLID BLOCKING IN WALLS AND PARTITIONS FOR ALL WALL MOUNTED ITEMS (GRAB BARS, CABINETS, COUNTERS, SHELVES, ETC.)

KEY	UL / G / A RATING	DESCRIPTION
NA	N/A	-5/8" GWB -3/8" MTL STUDS @ 16" O.C. -5/8" GWB -5/8" GWB
NB	N/A	-5/8" GWB -6" MTL STUDS @ 16" O.C. -5/8" GWB -5/8" GWB
NC	N/A	-5/8" GWB -6" MTL STUDS @ 16" O.C. -5/8" GWB -5/8" GWB

KEY	UL / G / A RATING	DESCRIPTION
1A	U465	-5/8" TYPE 'X' GWB -6" MTL (8 GAUGE) STUDS @ 16" O.C. -5/8" GWB -5/8" TYPE 'X' GWB
1B	U465	-5/8" TYPE 'X' GWB EXISTING STUDS ADD NEW METAL STUDS UP TO ROOF DECK AND SISTER FULL LENGTH STUDS AS REQUIRED -5/8" TYPE 'X' GWB
1C	SIM. U465	EXISTING WALL -3/8" MTL STUDS @ 16" O.C. -5/8" GWB -5/8" GWB

### CEILING ASSEMBLIES

KEY	UL / G / A RATING	DESCRIPTION
C1		-6" MTL JOISTS 16" O.C. (FRAMED ON TOP OF ADJACENT WALLS) -8" BATT INSULATION -ACOUSTICAL CEILING HANGER SYSTEM AND TRACKS, HANG FROM JOISTS ABOVE -ACOUSTICAL CEILING TILE (WITH DAMP SURFACE RATING)



© 2014 RYAN SENATORE ARCHITECTURE

RENOVATIONS TO 170 ANDERSON STREET PORTLAND, MAINE



CONSULTANTS:  
STRUCTURAL: Structural Integrity P/B B&B Portland, ME 04101 207-754-0814

REVISIONS:  
  
DATE: MAY 09, 2014  
PROJECT No.: 1416  
DRAWN BY: RJS / RRT  
CHECKED BY: RJS  
SCALE: AS NOTED

SHEET TITLE:  
GENERAL NOTES  
ABBREVIATIONS  
LEGEND AND  
WALL TYPES

G1-0