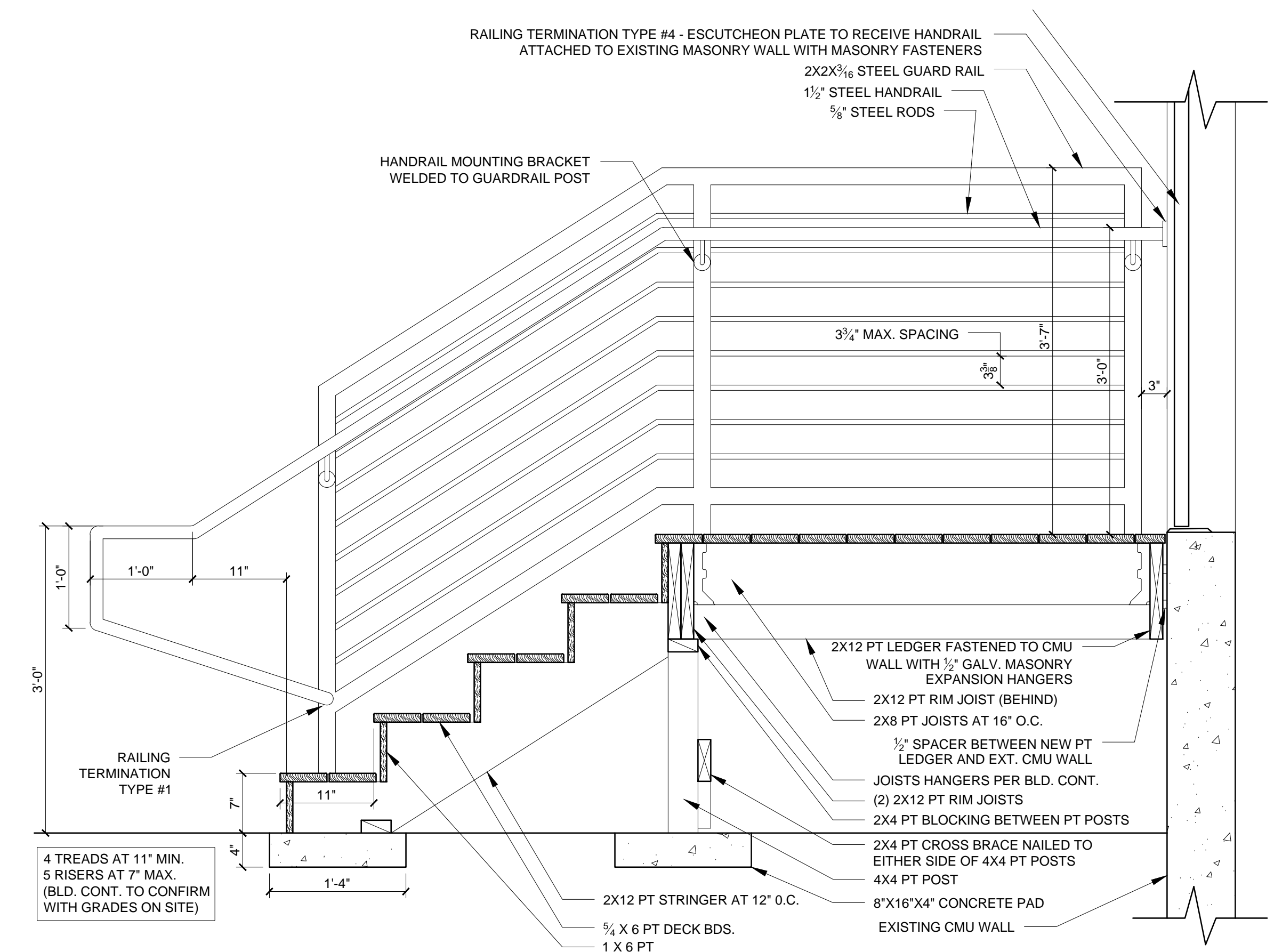
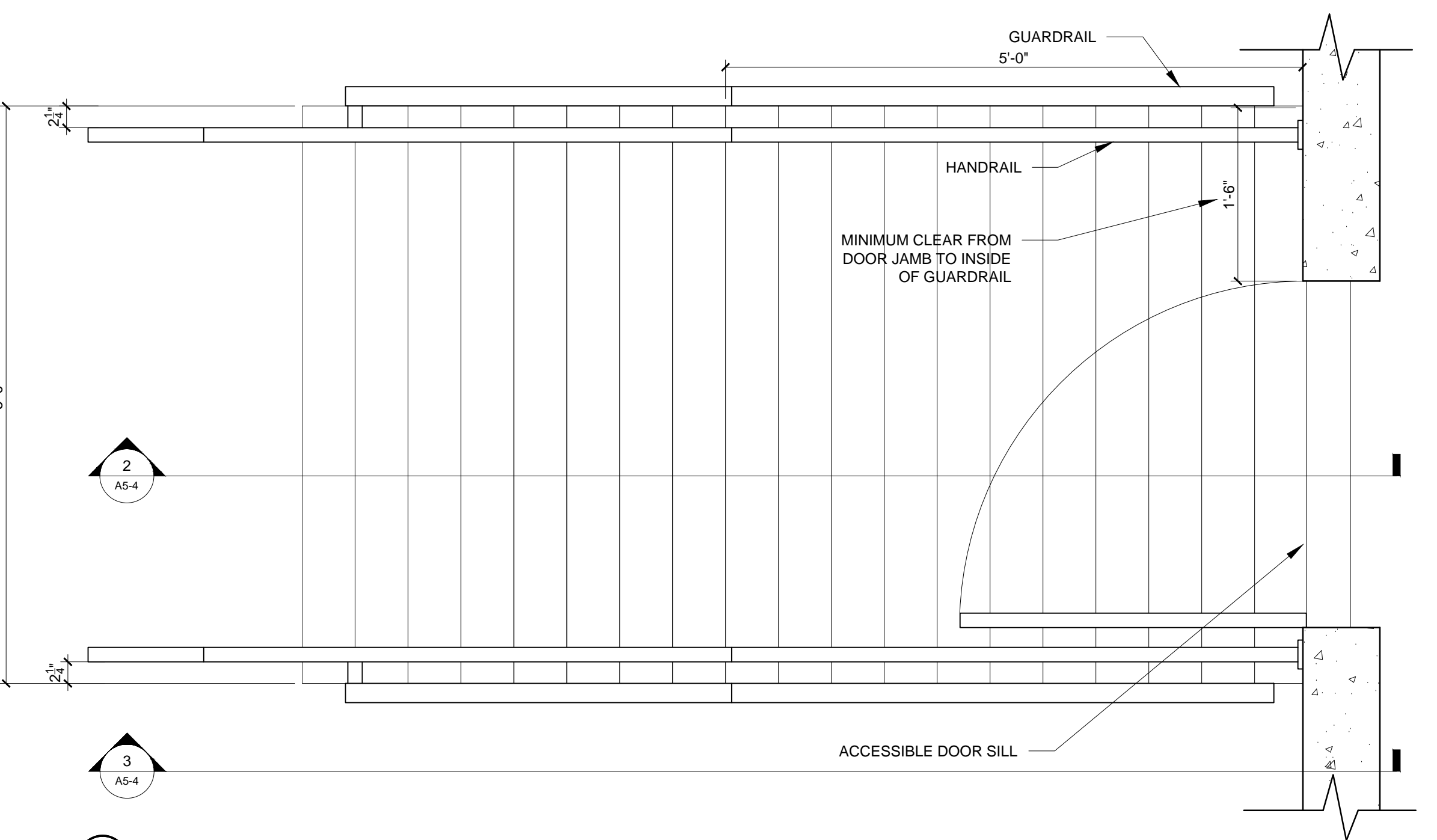


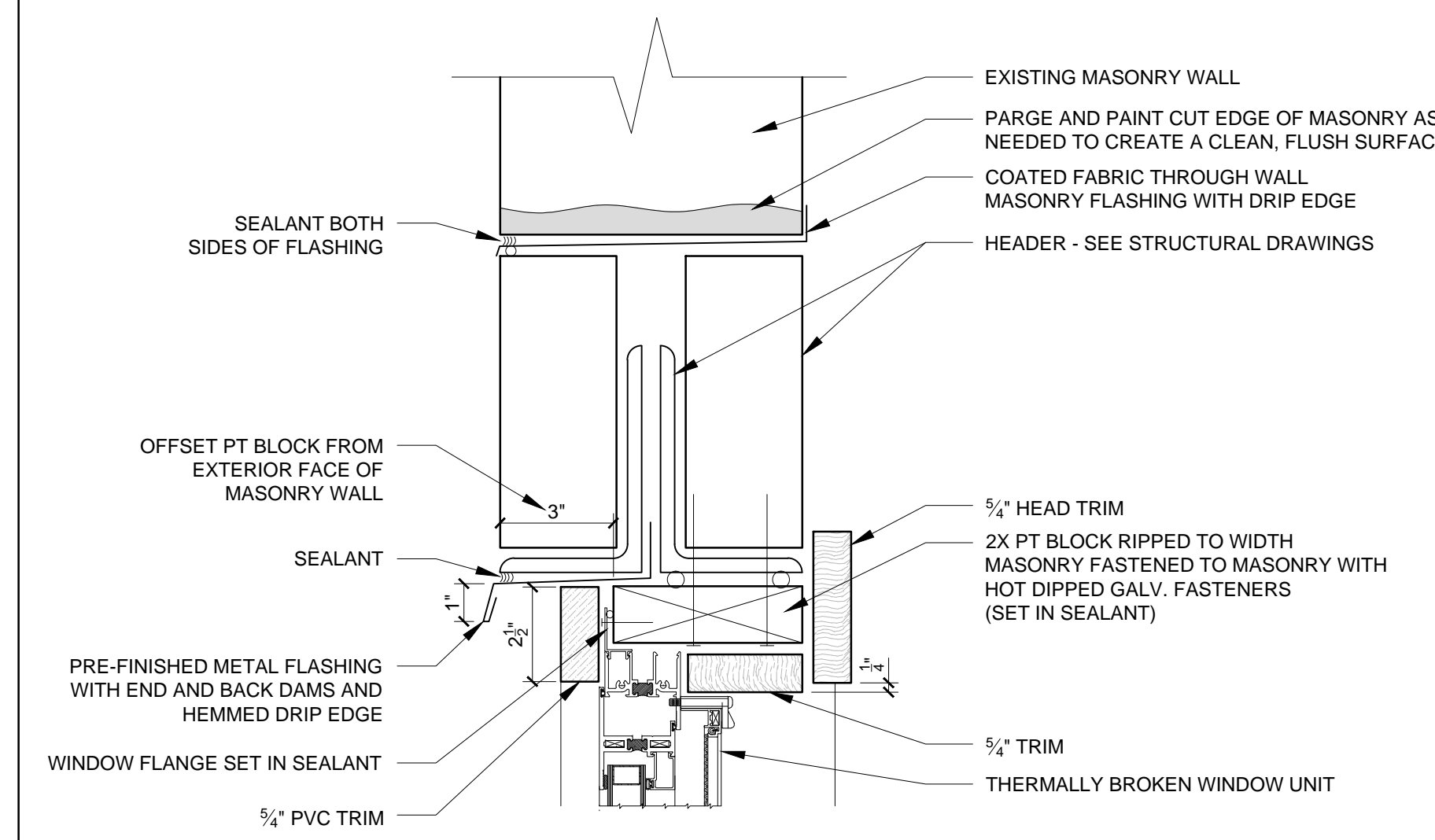
3 ELEVATION OF WOOD FRAMED EXTERIOR LANDING AND STAIR
 3/8" = 1'-0"



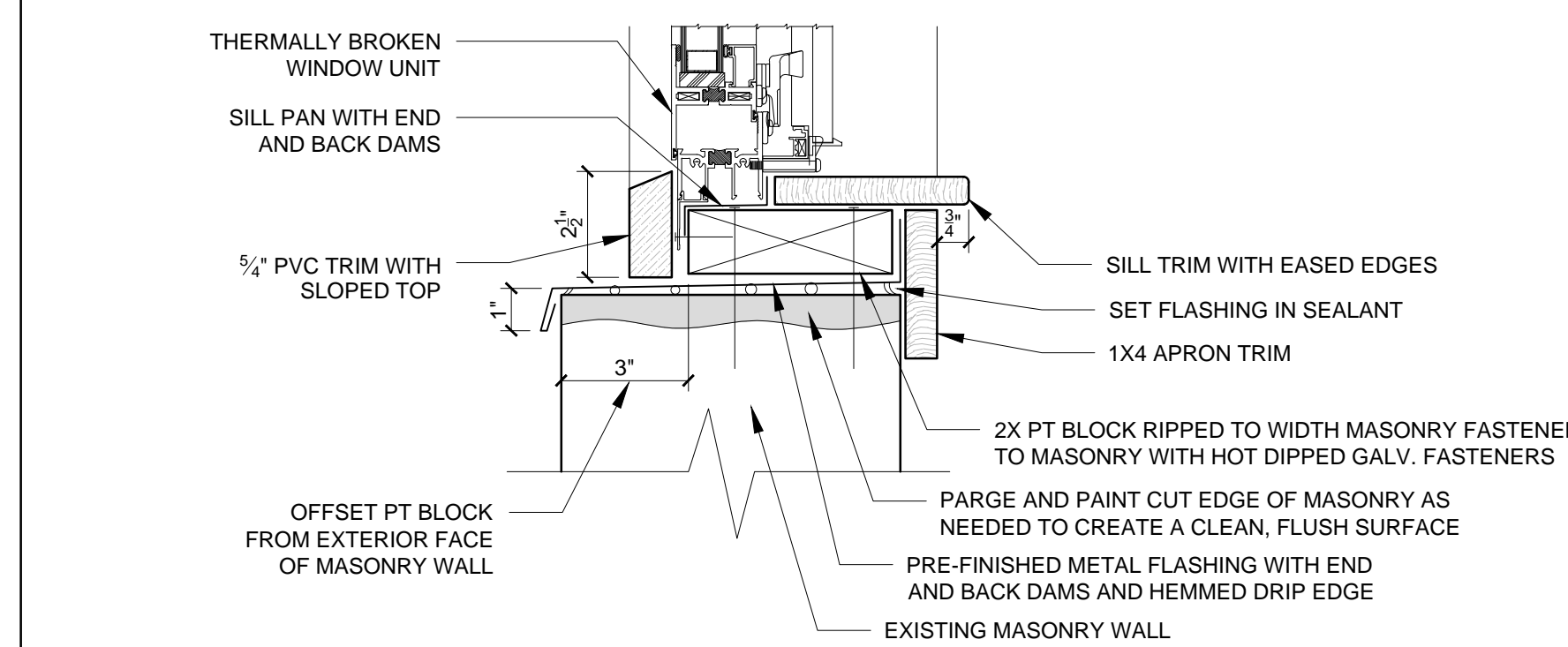
2 SECTION THROUGH WOOD FRAMED EXTERIOR LANDING AND STAIR
 1/8" = 1'-0"



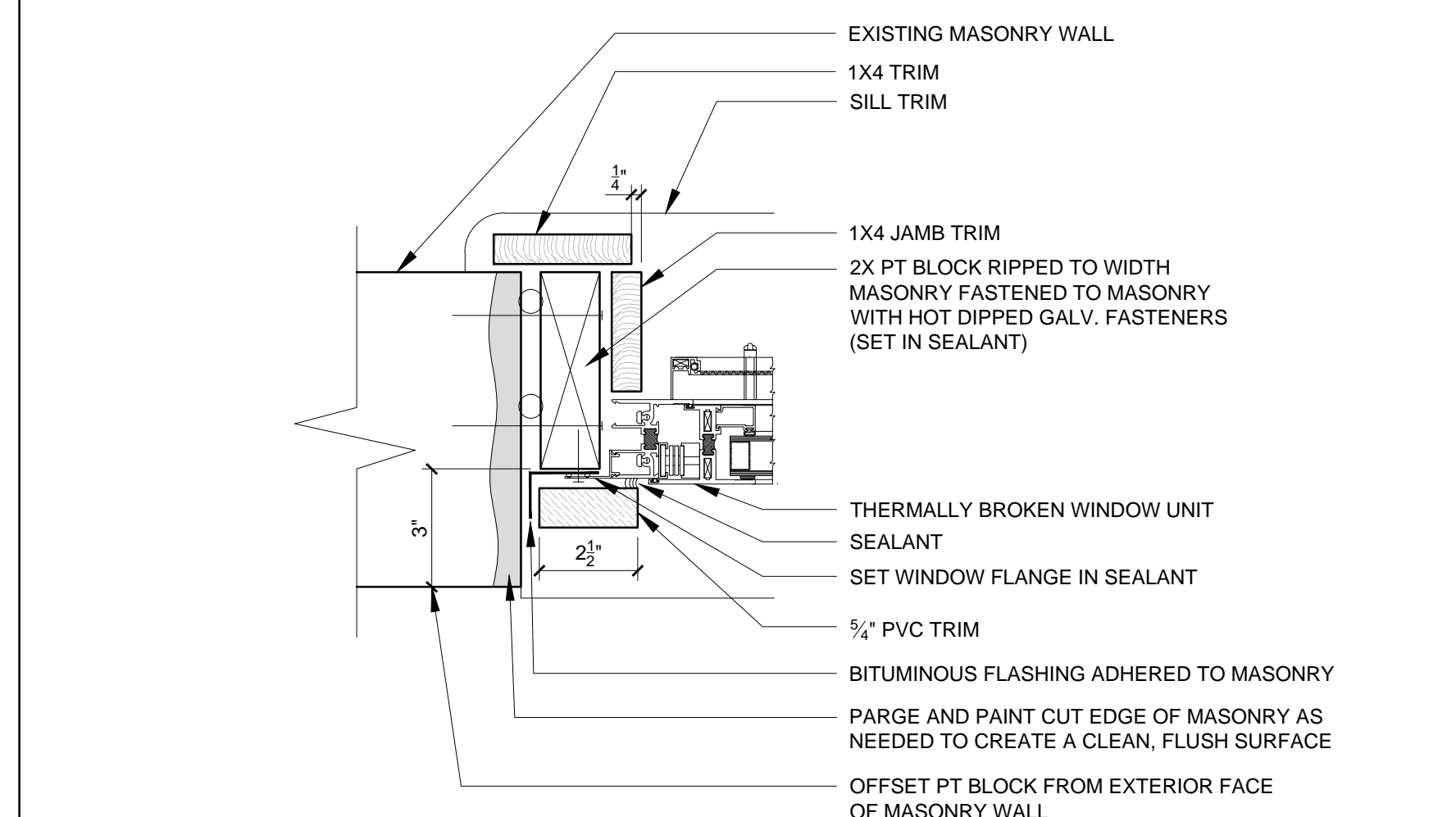
1 WOOD FRAMED EXTERIOR LANDING AND STAIRS
 1/8" = 1'-0"



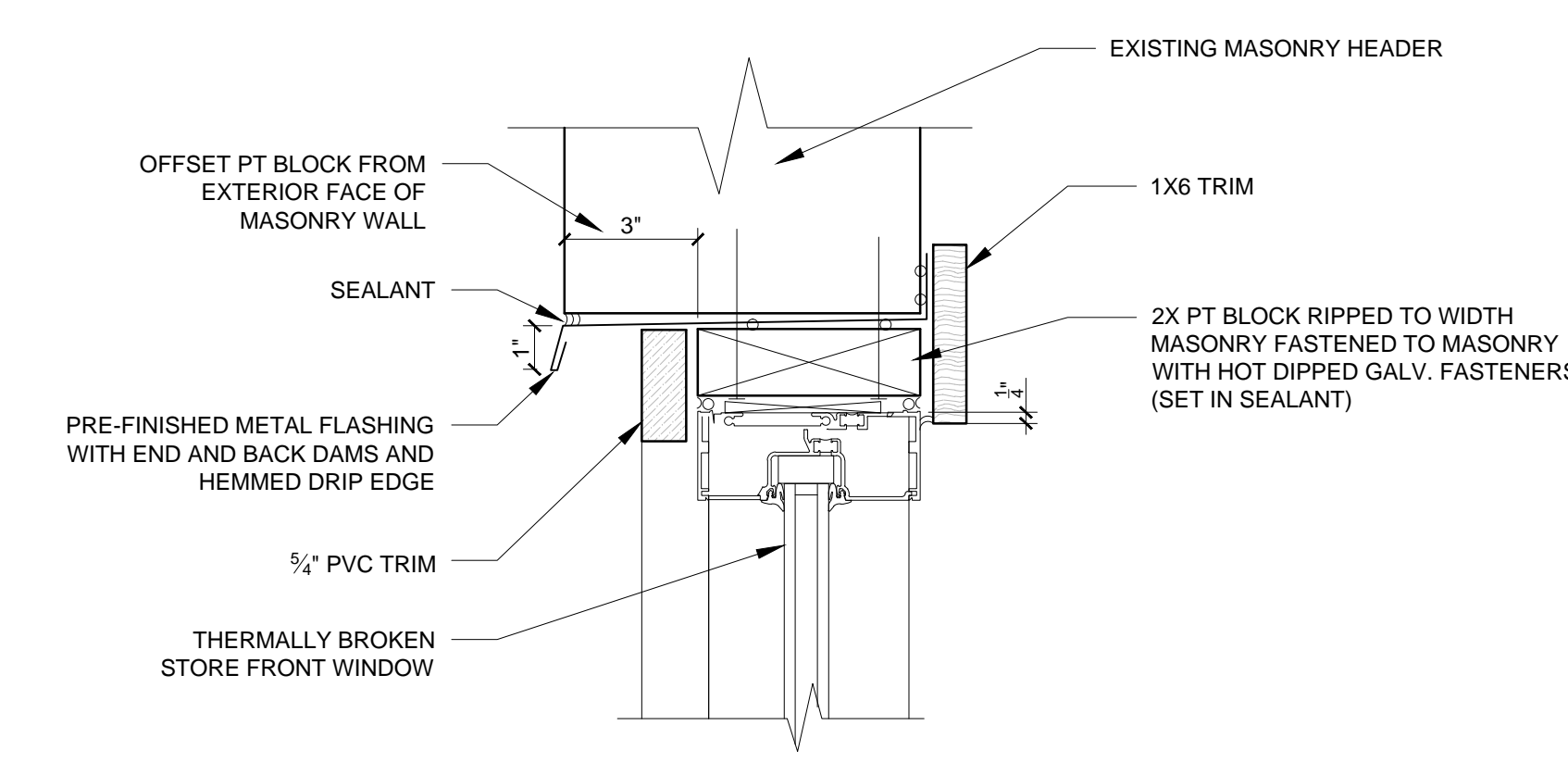
8 SECTION DETAIL AT FLANGED WINDOW HEAD
 3/8" = 1'-0"



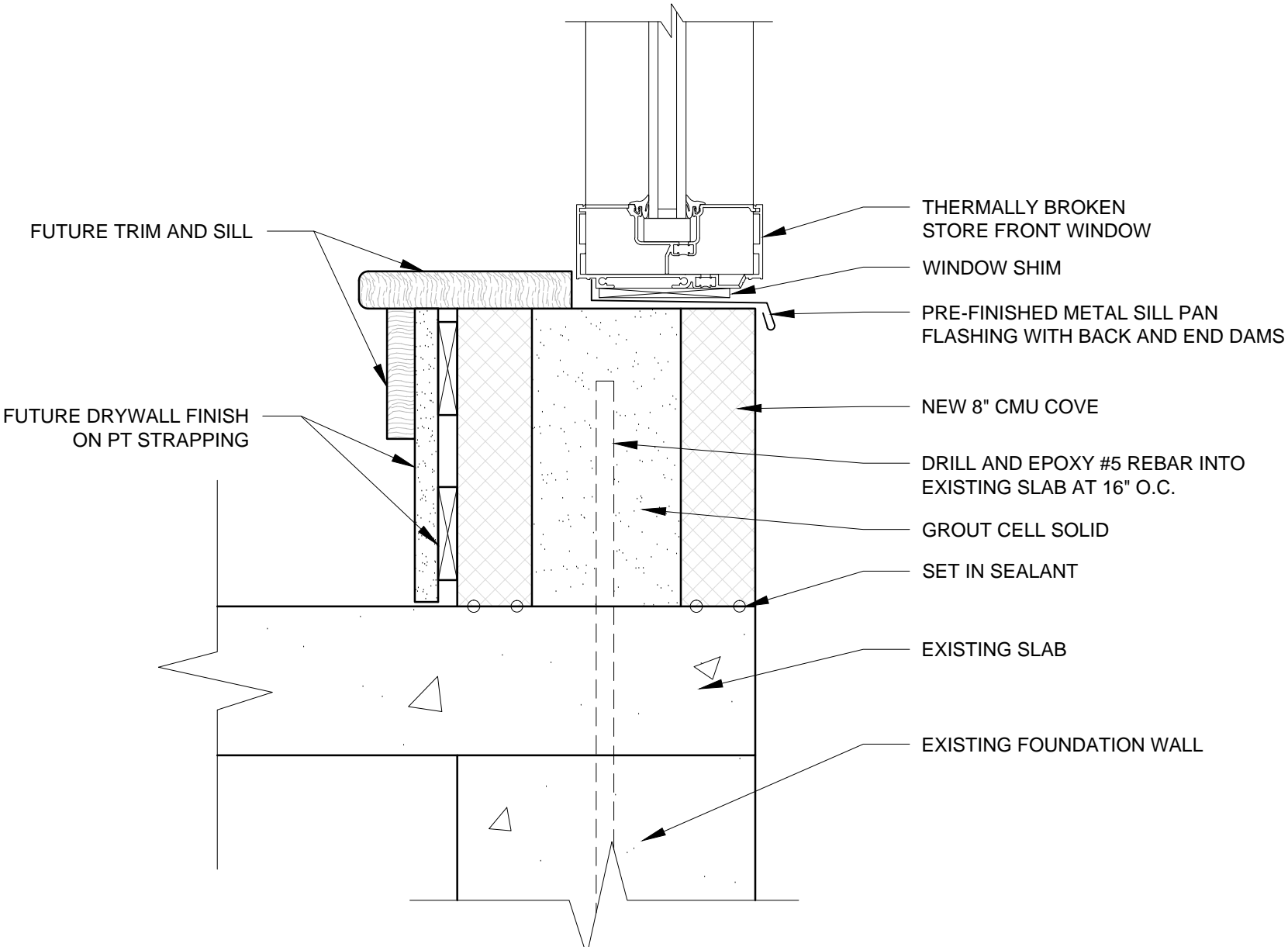
7 SECTION DETAIL AT FLANGED WINDOW SILL
 3/8" = 1'-0"



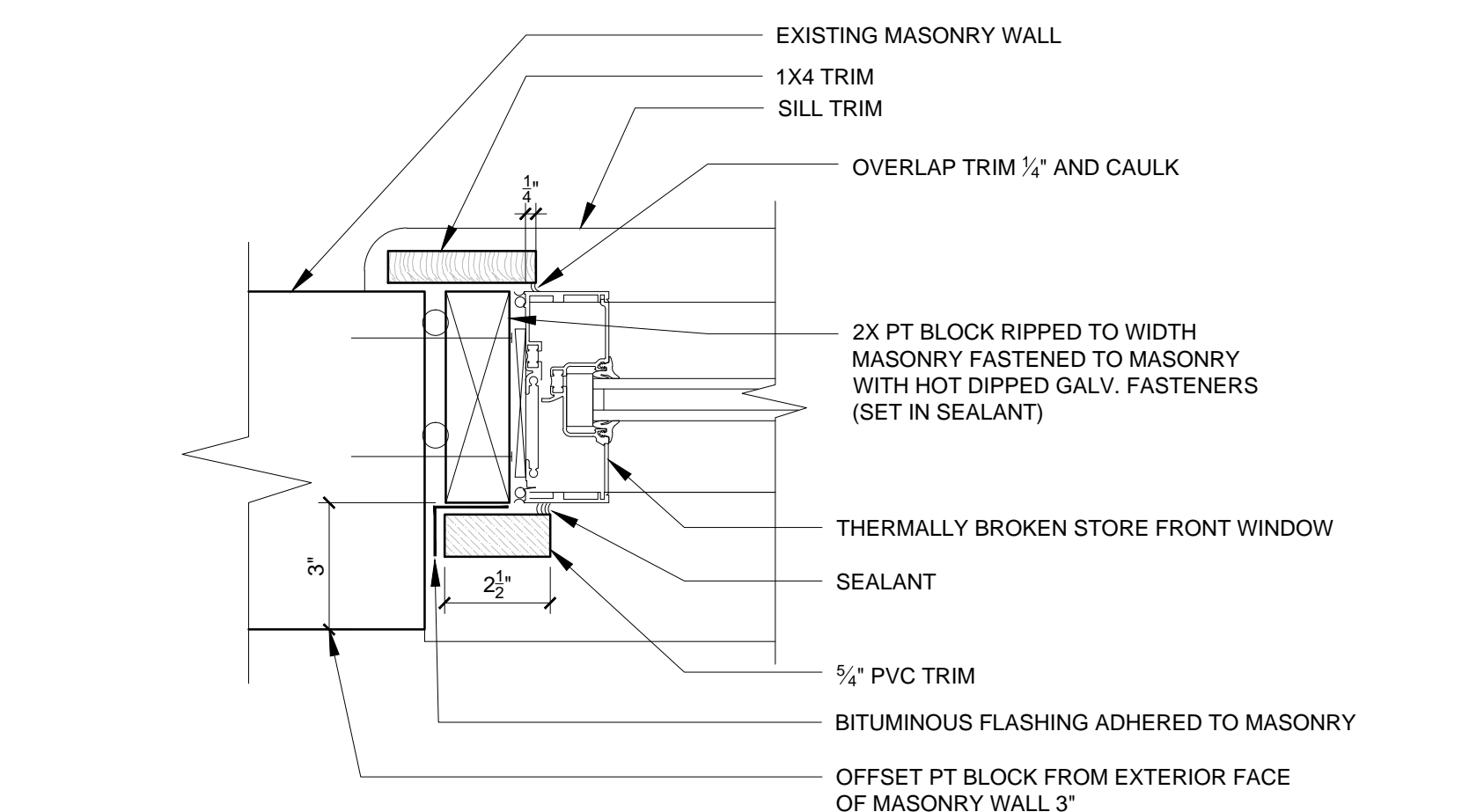
6 PLAN DETAIL AT FLANGED WINDOW JAMB
 3/8" = 1'-0"



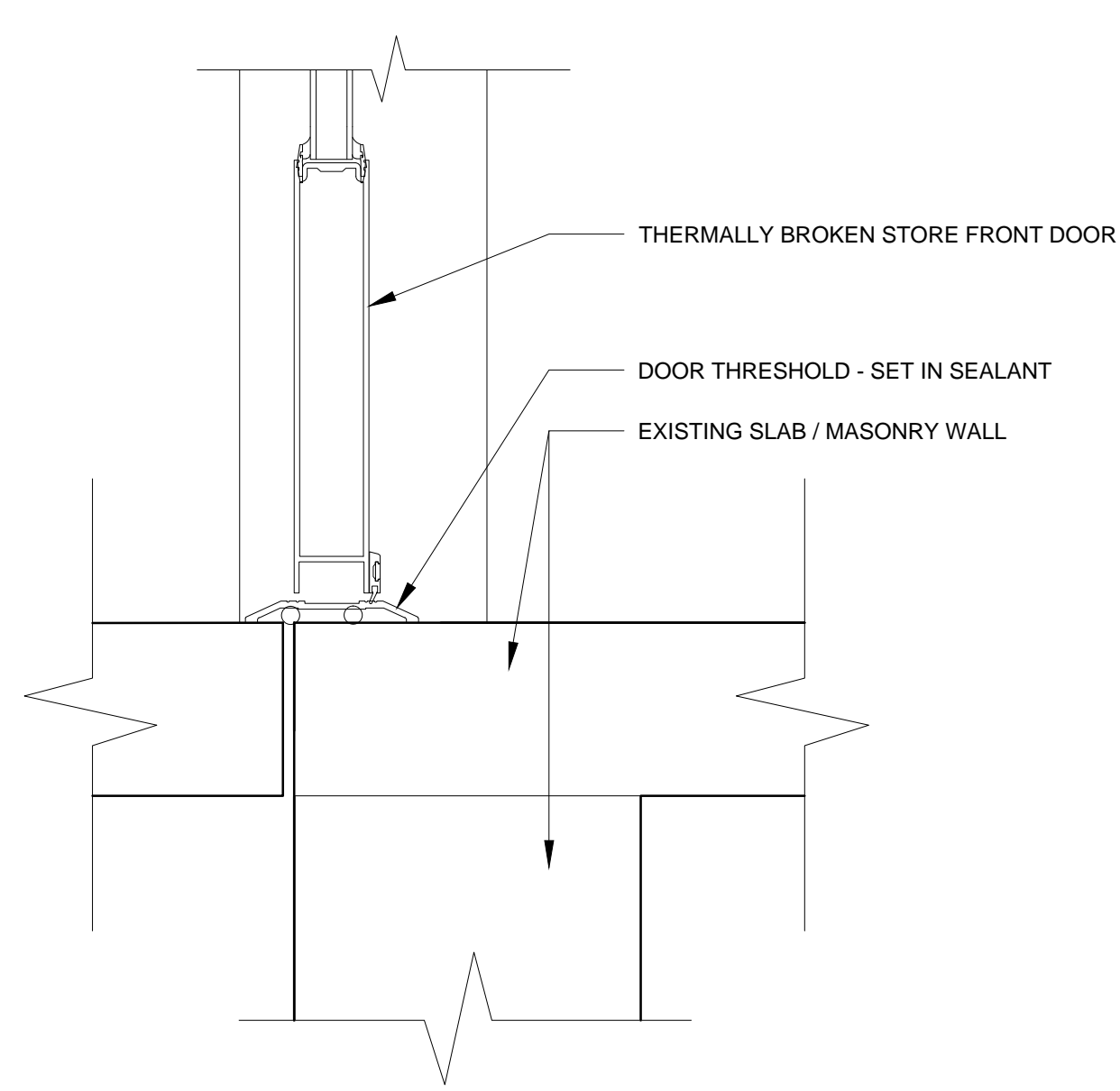
11 SECTION DETAIL AT STORE FRONT WINDOW HEAD
 3/8" = 1'-0"



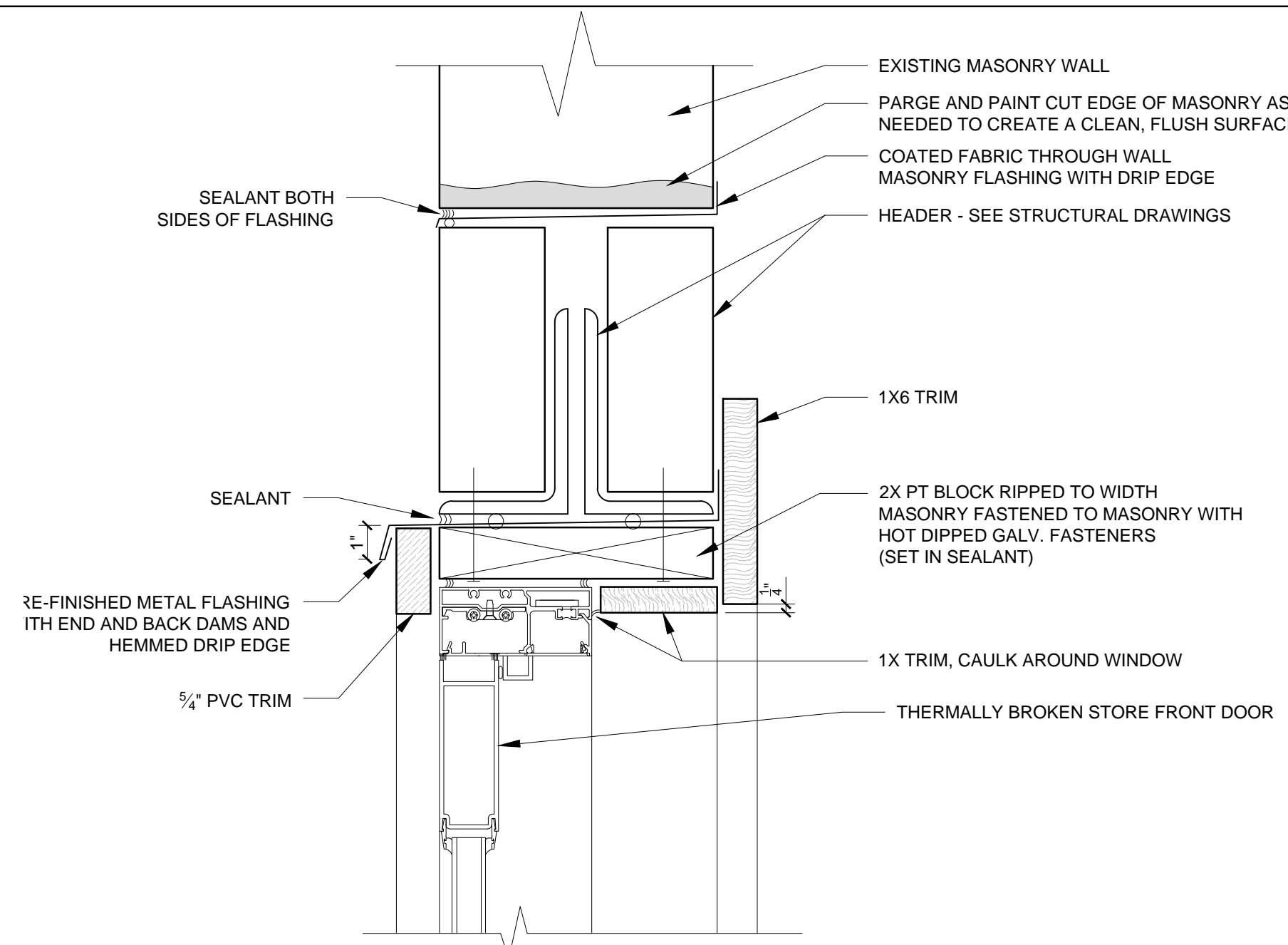
10 SECTION DETAIL AT STORE FRONT WINDOW SILL
 3/8" = 1'-0"



9 PLAN DETAIL AT STORE FRONT WINDOW JAMB
 3/8" = 1'-0"



5 SECTION DETAIL OF STORE FRONT DOOR SILL
 3/8" = 1'-0"



4 SECTION DETAIL OF STORE FRONT DOOR HEAD
 3/8" = 1'-0"