

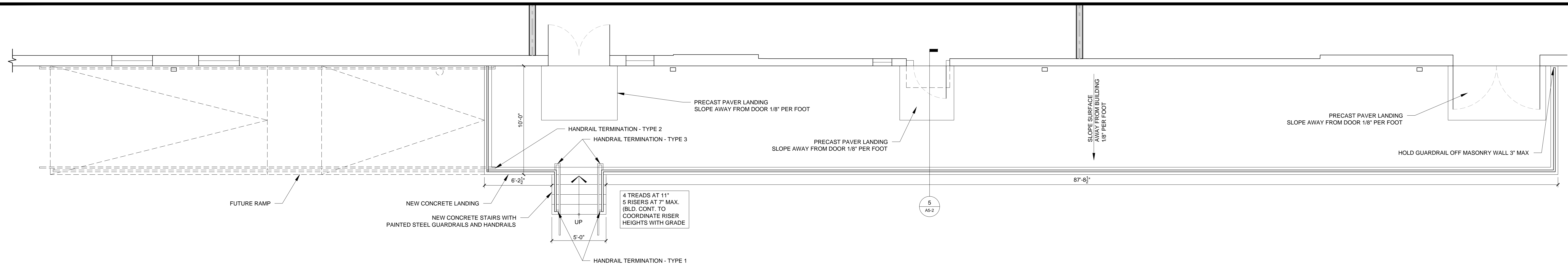
© 2014 RYAN SENATORE ARCHITECTURE

RENOVATIONS TO  
170 ANDERSON STREET  
PORTLAND, MAINE

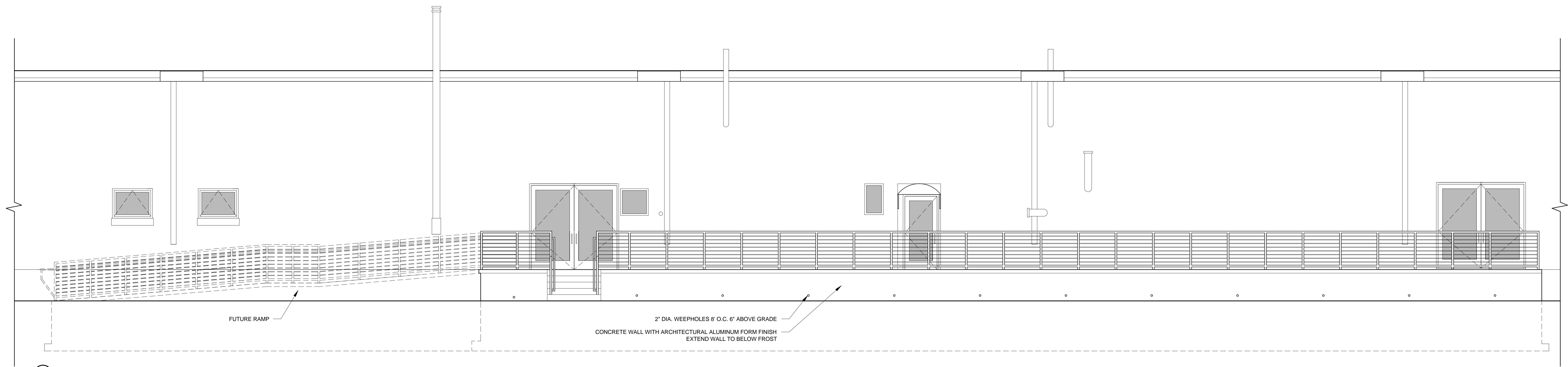


RYAN SENATORE ARCHITECTURE  
565 CONGRESS STREET  
SUITE 304  
PORTLAND, MAINE 04101  
207-655-6414  
senatorearchitecture.com

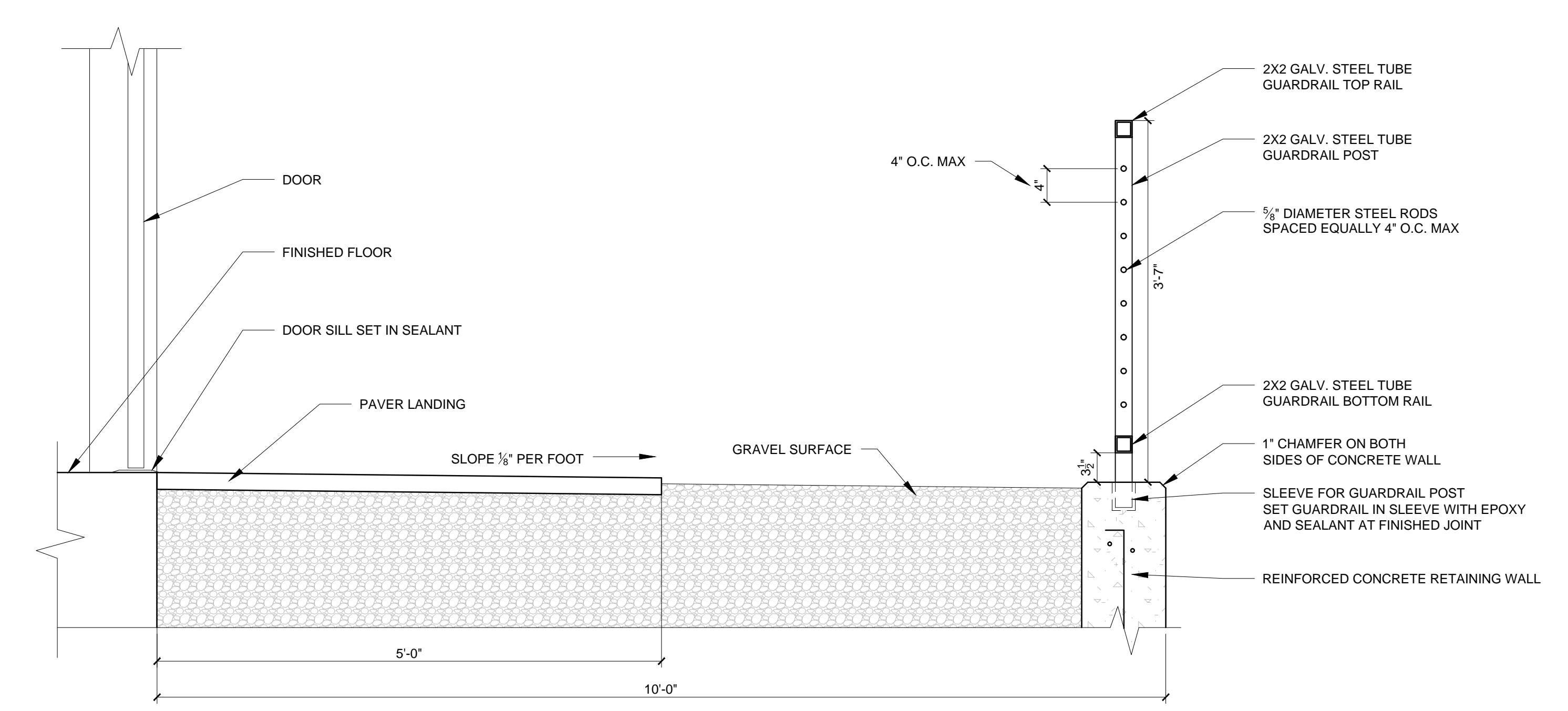
CONSULTANTS:  
STRUCTURAL:  
Structural Integrity  
77 Oak Street  
Portland, ME 04101  
207-774-4614



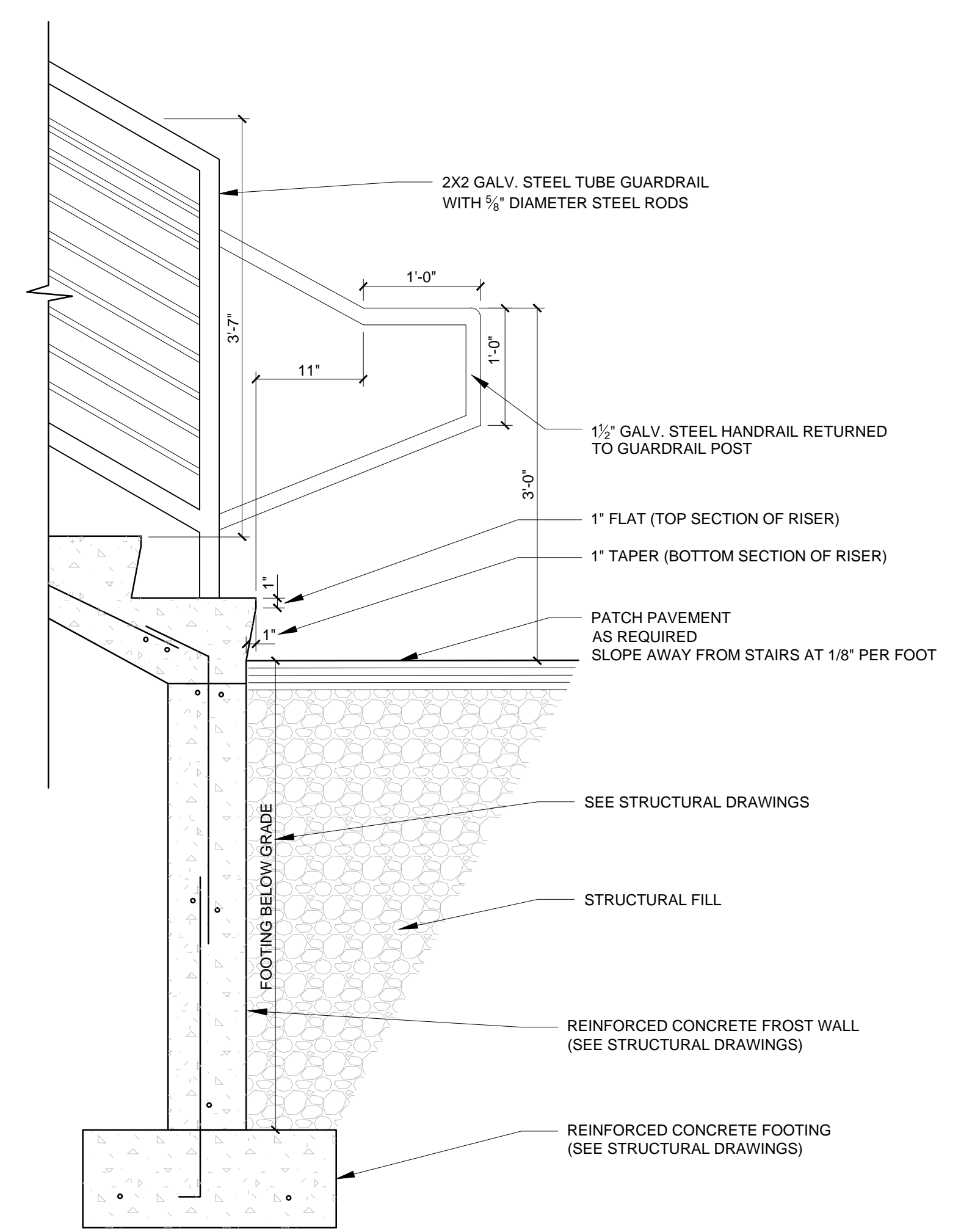
1 STAIR / RAMP PLAN  
1/8" = 1'-0"



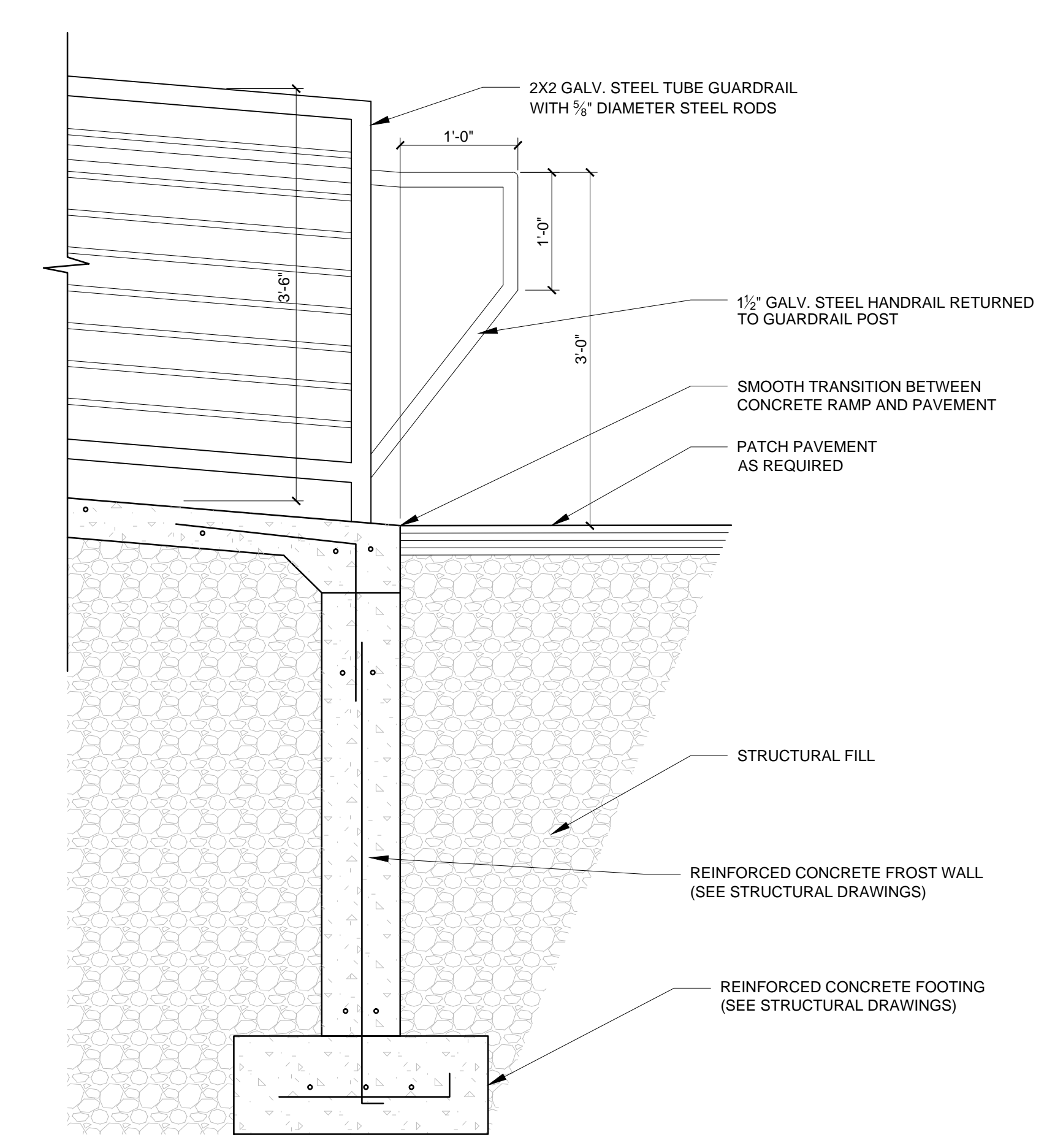
2 STAIR / RAMP ELEVATION  
1/8" = 1'-0"



5 PLATFORM SECTION DETAIL  
1" = 1'-0"



4 STAIR DETAIL  
1" = 1'-0"



3 RAMP DETAIL  
1" = 1'-0"

REVISIONS:

DATE: MAY 09, 2014  
PROJECT No. 1416  
DRAWN BY: RJS / RRT  
CHECKED BY: RJS  
SCALE: AS NOTED

SHEET TITLE:  
DETAILS

A5-2