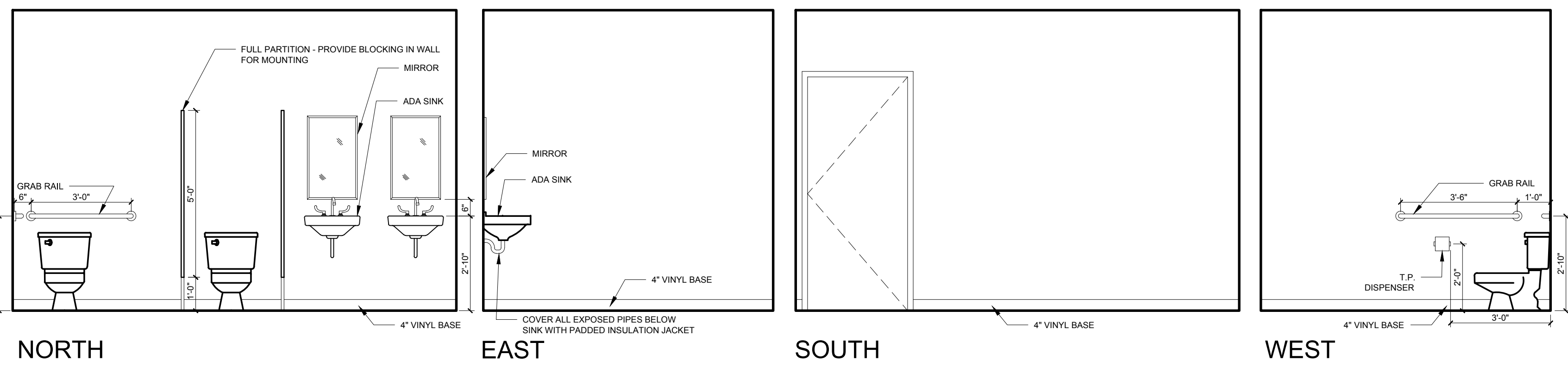
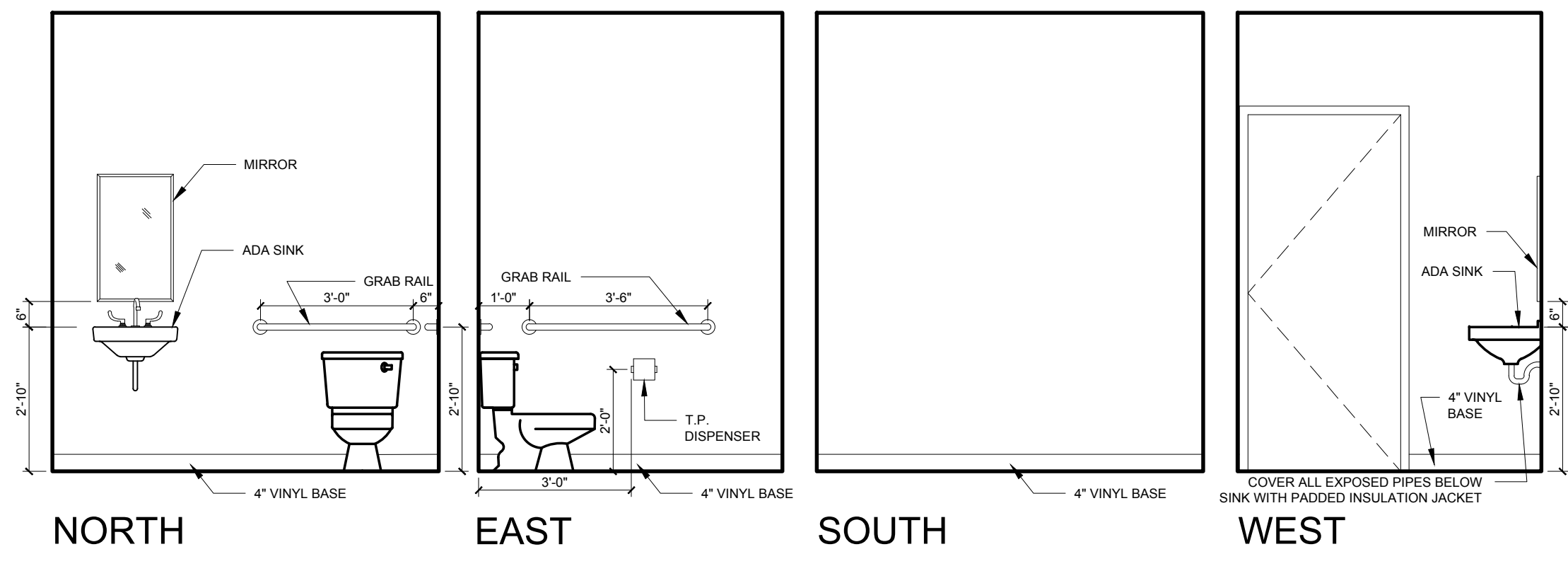


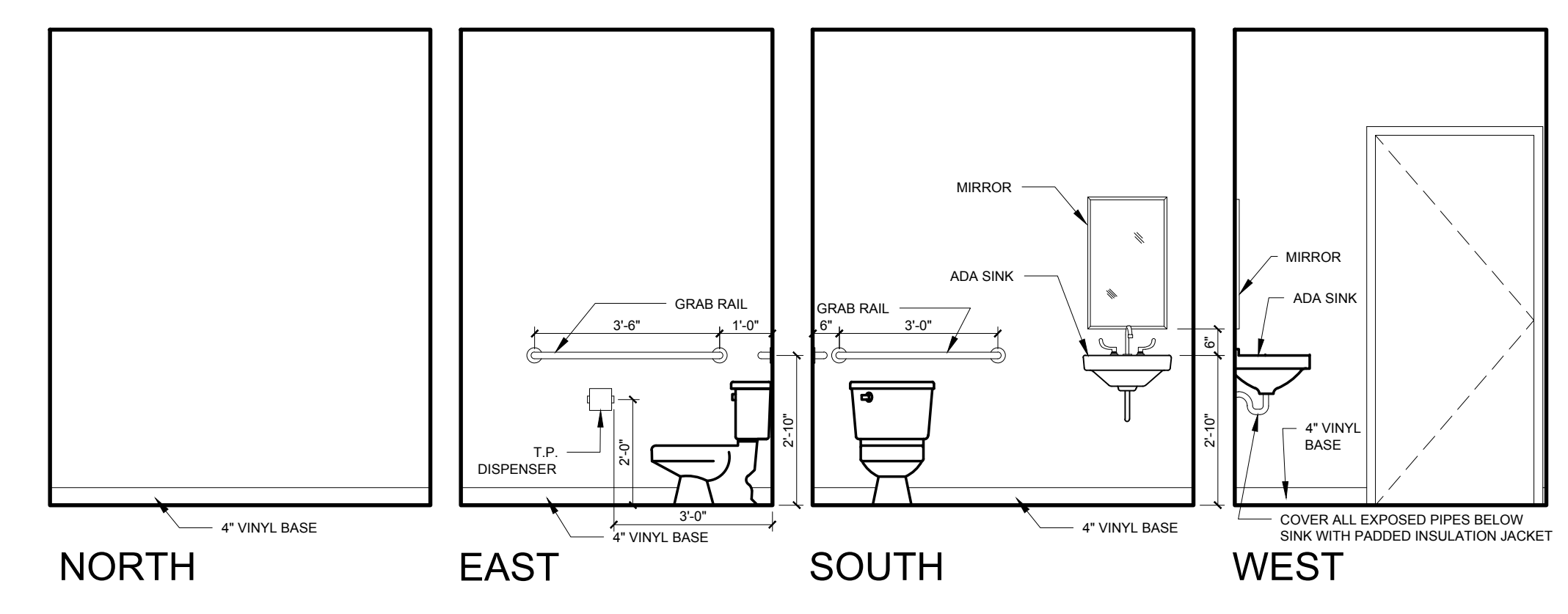
8 MEN'S RESTROOM 101
 3'8" x 1'-0"



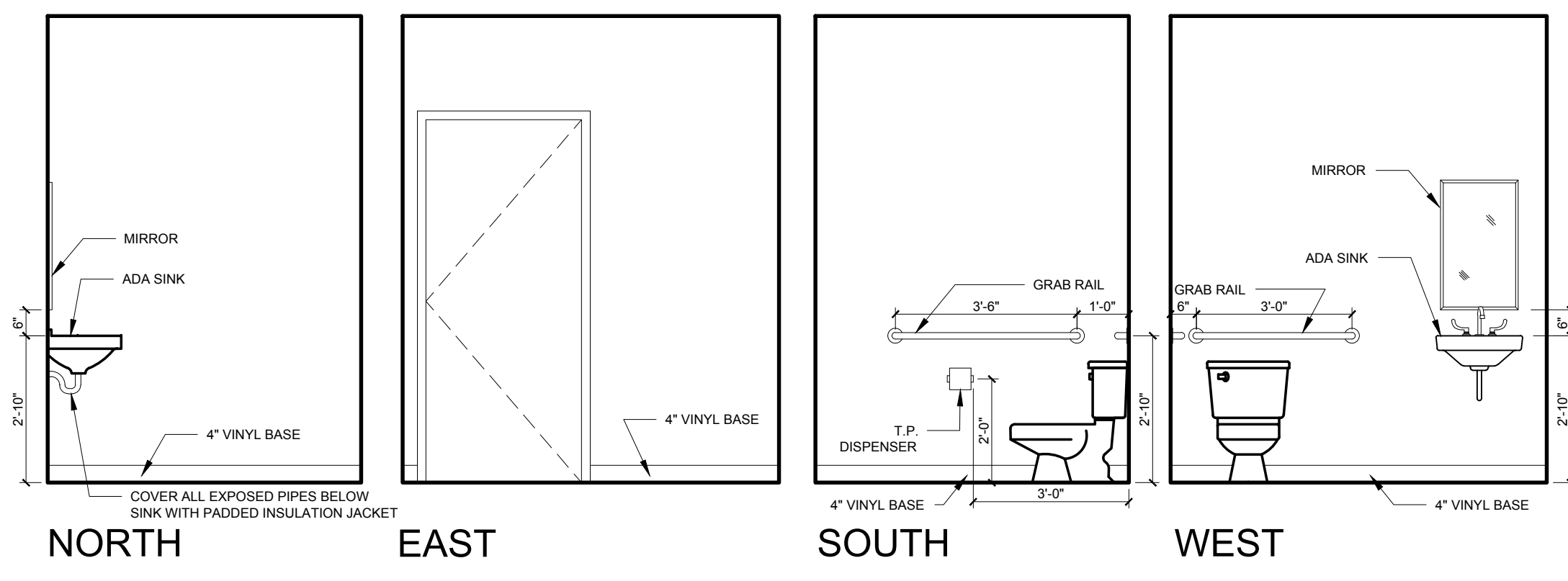
6 WOMEN'S RESTROOM 102
 3'8" x 1'-0"



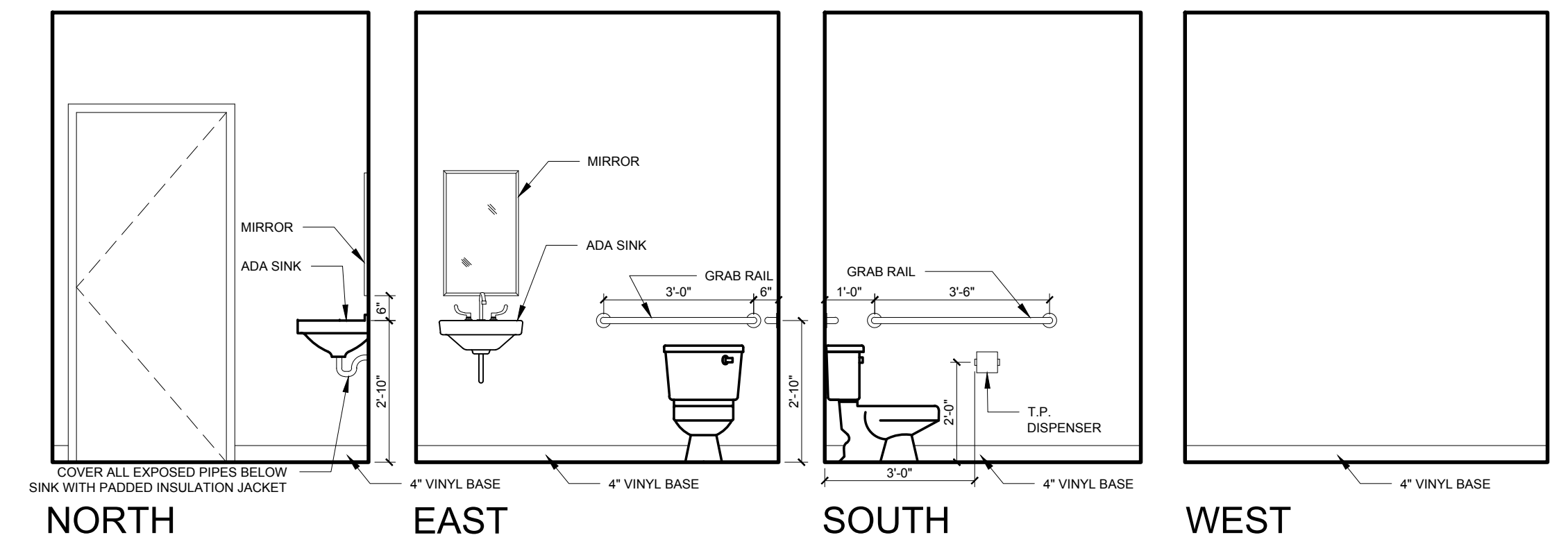
4 REST ROOM 501
 3'8" x 1'-0"



7 REST ROOM 201
 3'8" x 1'-0"



5 REST ROOM 301
 3'8" x 1'-0"

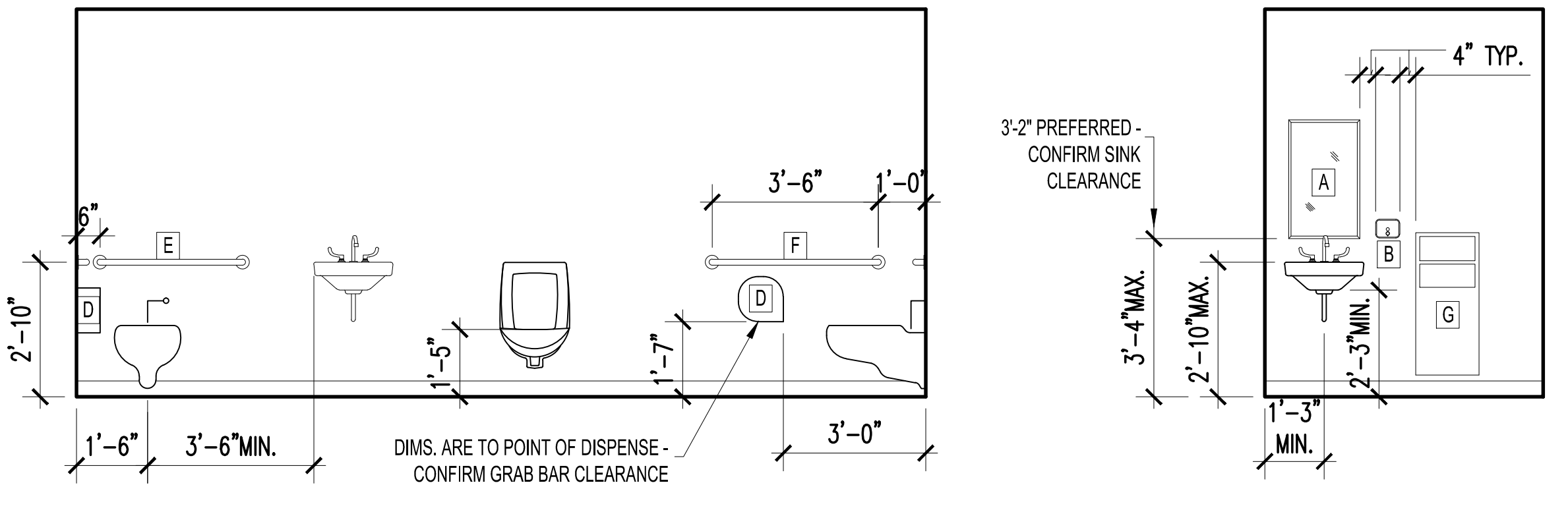


3 REST ROOM 401
 3'8" x 1'-0"

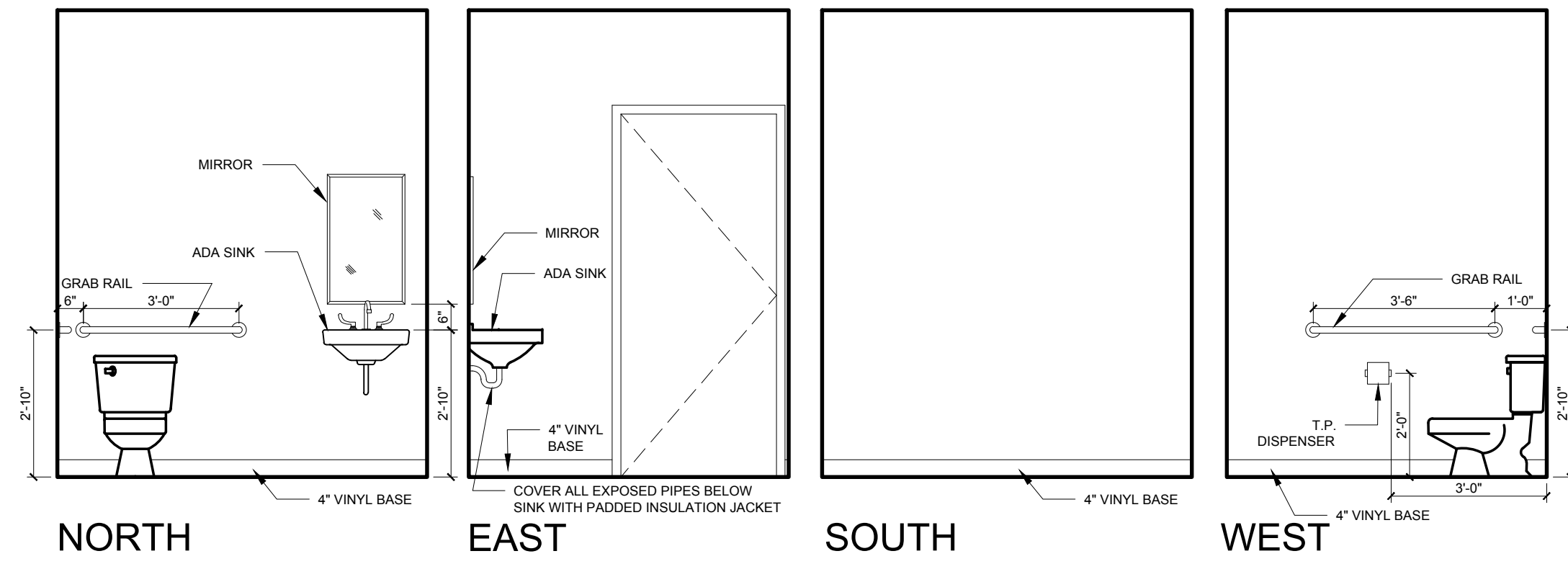
- NOTES
- WHEN GIVEN A RANGE OF DIMENSIONS FOR PLACEMENT, PLACE ALL FIXTURES OF SAME TYPE AT THE SAME ELEVATION THROUGHOUT, UNLESS OTHERWISE DIRECTED.
 - MIRRORS TO BE CENTERED OVER SINKS
 - PROVIDE APPROPRIATE BLOCKING IN WALLS BEHIND ALL FIXTURES, PARTITIONS, AND ACCESSORIES.

TOILET ACCESSORIES KEY

- A MIRROR 18" x 36" NOM.
- B SOAP DISPENSER - PBOIBC
- C NOT USED
- D TOILET PAPER DISPENSER
- E GRAB BAR 36" (1 1/4" TO 1 1/2" O.D.)
- F GRAB BAR 42" (1 1/4" TO 1 1/2" O.D.)
- G NOT USED
- H GRAB BAR 18" (1 1/4" TO 1 1/2" O.D.)



2 TYPICAL ADA BATHROOM LAYOUT
 3'8" x 1'-0"



1 REST ROOM 601
 3'8" x 1'-0"

REVISIONS:

DATE: MAY 09, 2014
 PROJECT No. 1416
 DRAWN BY: RJS / RRT
 CHECKED BY: RJS
 SCALE: AS NOTED

SHEET TITLE:
 INTERIOR ELEVATIONS