

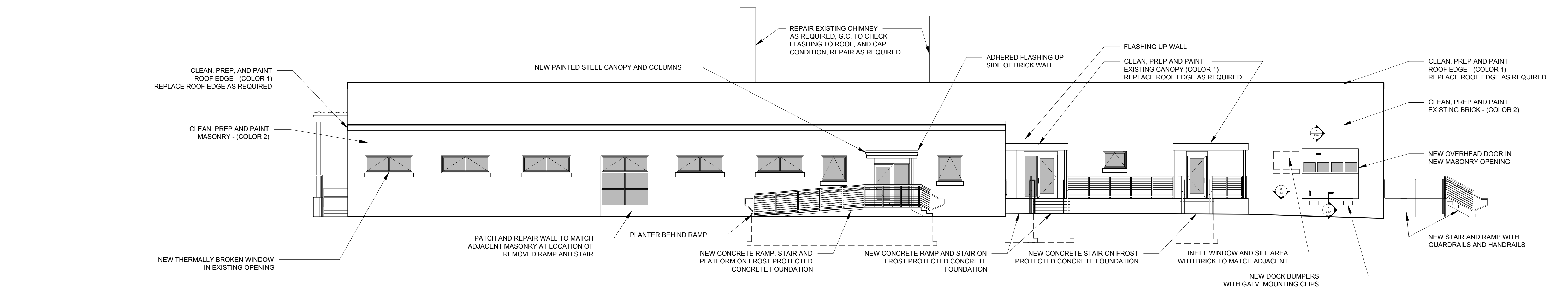
© 2014 RYAN SENATORE ARCHITECTURE

RENOVATIONS TO  
170 ANDERSON STREET  
PORTLAND, MAINE

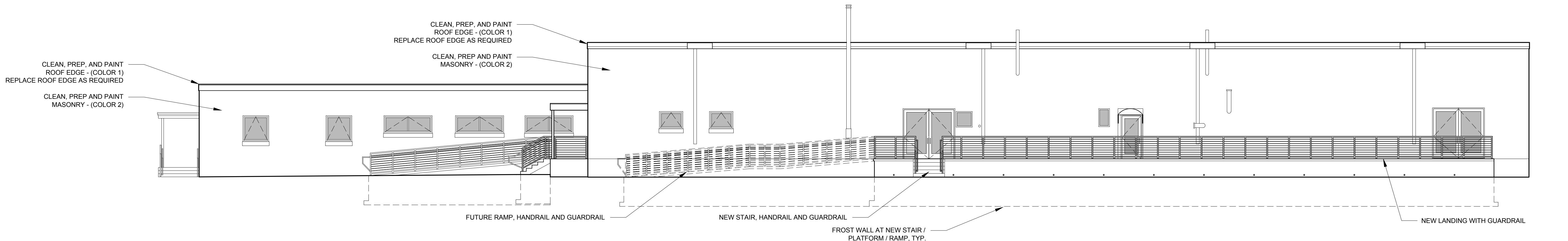


RYAN SENATORE  
ARCHITECTURE  
565 CONGRESS STREET  
SUITE 304  
PORTLAND, MAINE 04101  
207-650-8414  
senatorearchitecture.com

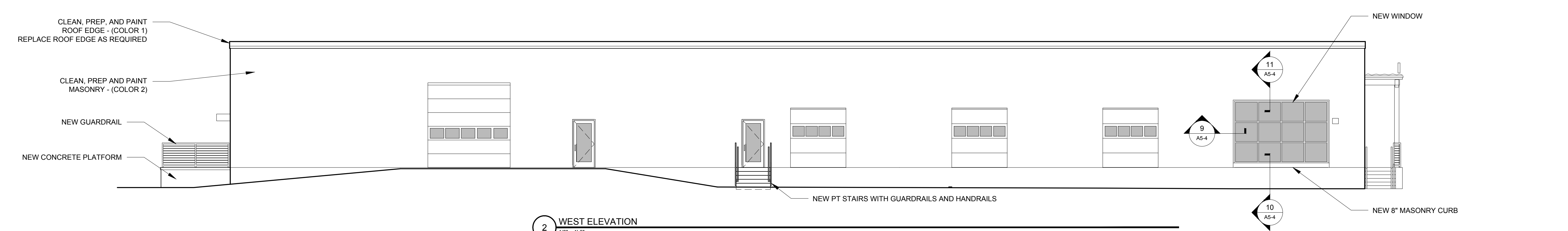
CONSULTANTS:  
STRUCTURAL:  
Structural Integrity  
77 Oak Street  
Portland, ME 04101  
207-774-4614



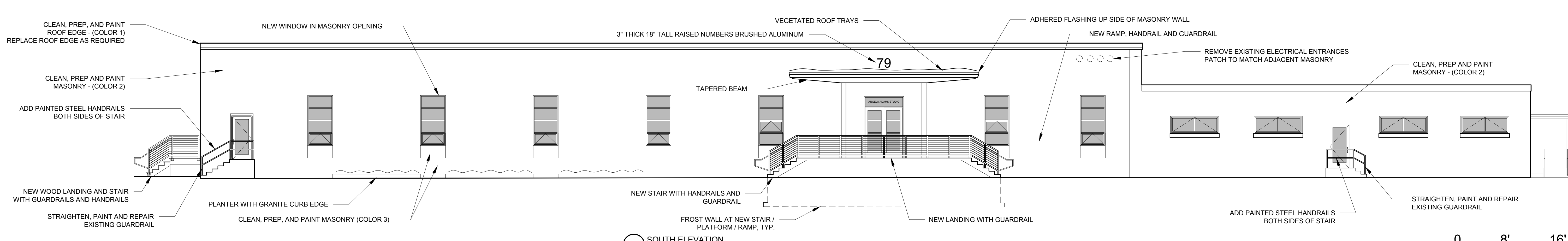
4 EAST ELEVATION  
1/8" = 1'-0"



3 NORTH ELEVATION  
1/8" = 1'-0"



2 WEST ELEVATION  
1/8" = 1'-0"



1 SOUTH ELEVATION  
1/8" = 1'-0"



REVISIONS:

DATE: MAY 09, 2014

PROJECT No. 1416

DRAWN BY: RJS / RRT

CHECKED BY: RJS

SCALE: AS NOTED

SHEET TITLE:

ELEVATIONS

A2-0