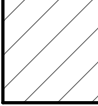




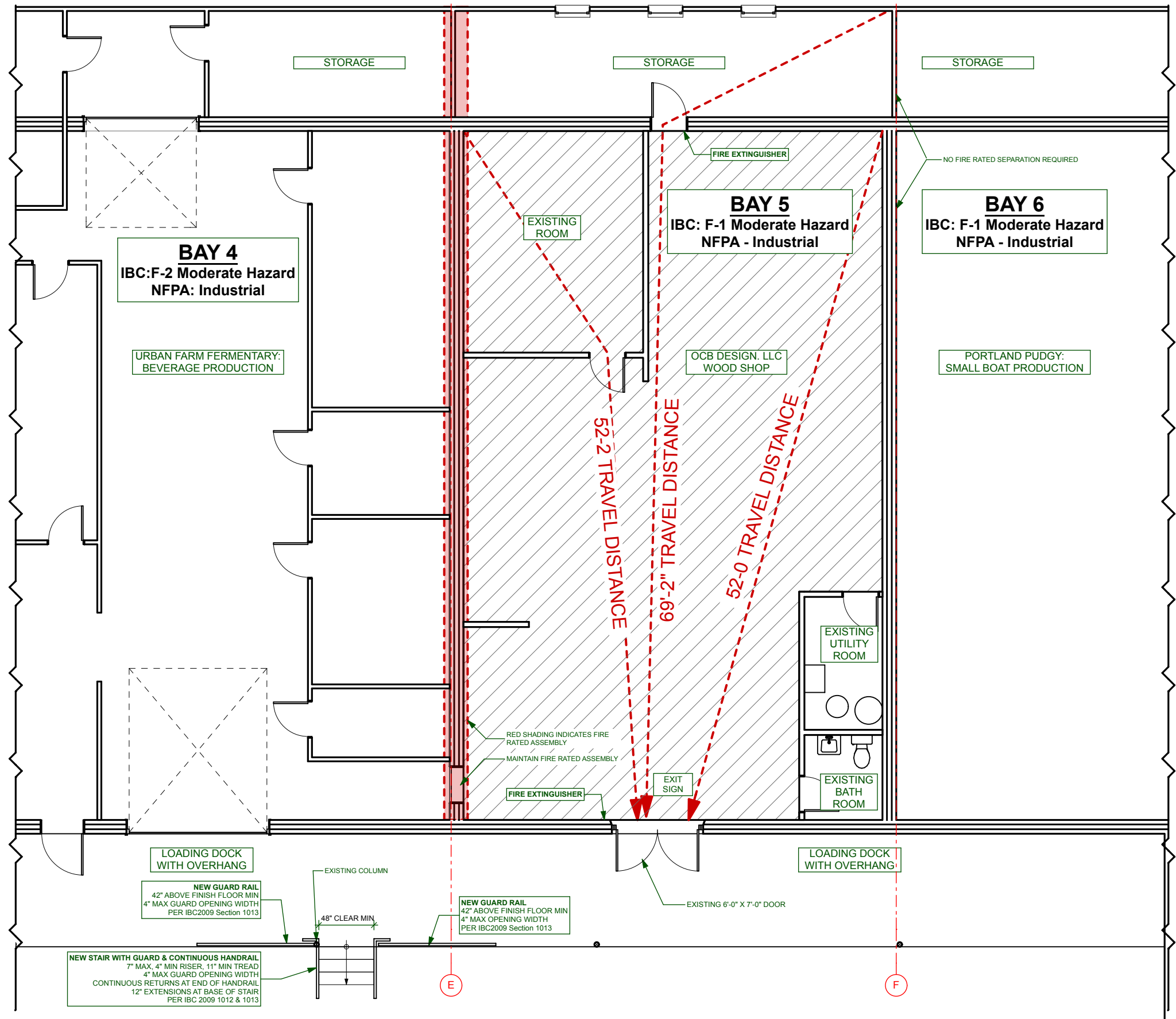
BAY B5 NOTES

PORTLAND ZONING NOTES:
I-Lb ZONE: Low Impact Industrial Use: Wood Products

IBC OCCUPANCY KEY NOTES
BAY 5
 F-1: FACTORY, MOD-HAZARD
1,421 SF / 100 = 14 Occupants

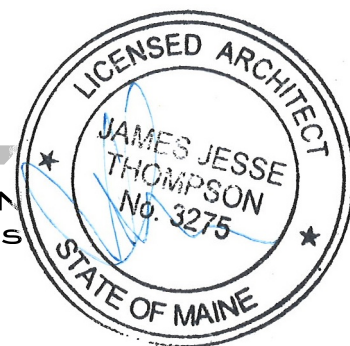
NFPA OCCUPANCY KEY NOTES
BAY 5
 INDUSTRIAL
1,421 SF / 100 = 14 Occupants

WALL ASSEMBLY RATING
 1-HR FIRE RATED ASSEMBLY



KAPLAN THOMPSON
ARCHITECTS

424 fore st., portland, me 04101
207-842-2888 fax:842-2828



Project:
OCB Design, LLC
200 ANDERSON ST
PORTLAND, MAINE 04101

Drawing: LIFE SAFETY/KEY PLAN

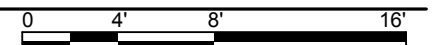
CHANGE OF USE PERMIT

Scale: 1'-8" = 1'-0"

Drawn by: RT

Date: November 14, 2017

Revised:



A-1.2