

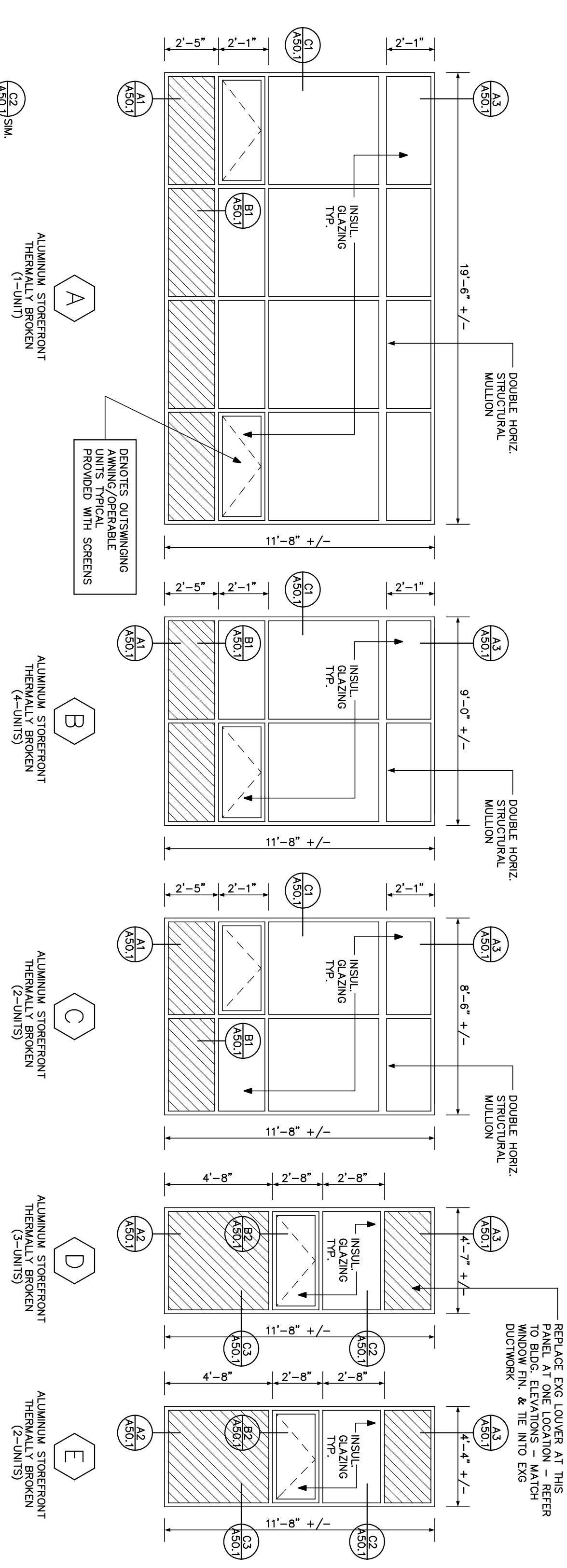
Project Title  
**BAYVIEW HEIGHTS  
 ROOF & WINDOW  
 RENOVATIONS**  
 Volunteers of America Northern New England  
 158 North Street  
 Portland, Maine

**GENERAL NOTES**

1. ALL AREAS EFFECTED BY DEMOLITION OR DAMAGED WHILE INSTALLING NEW WINDOWS SHALL BE REPAIRED, PATCHED AND REFINISHED TO EXISTING FINISHES.
2. REFER TO DRAWING SHEET A20.1 FOR NEW WINDOW LOCATIONS.

Issue Date	Description
04-26-11	ISSUED FOR CONSTRUCTION
04-20-11	PROGRESS DRAWINGS

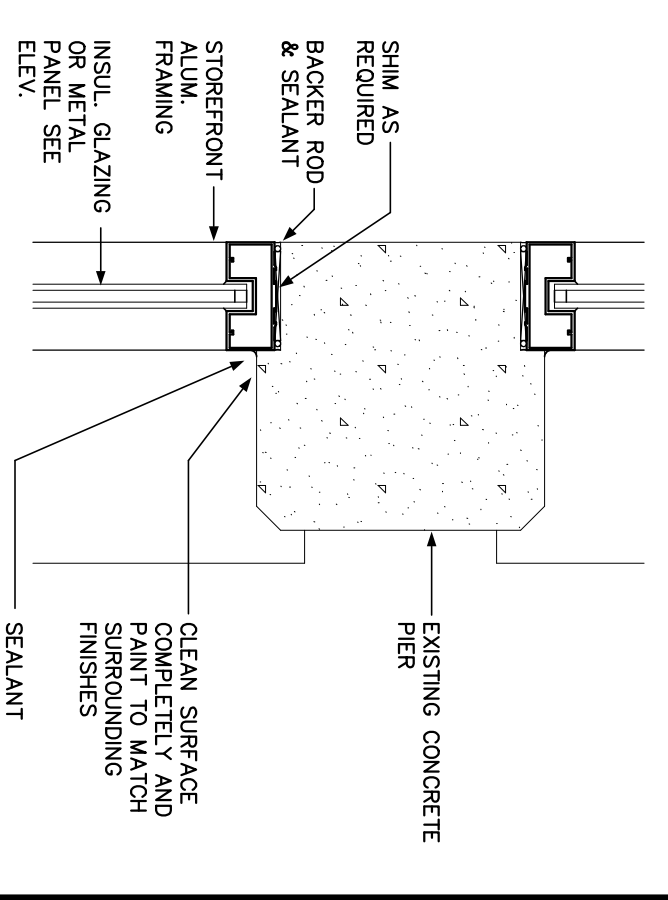
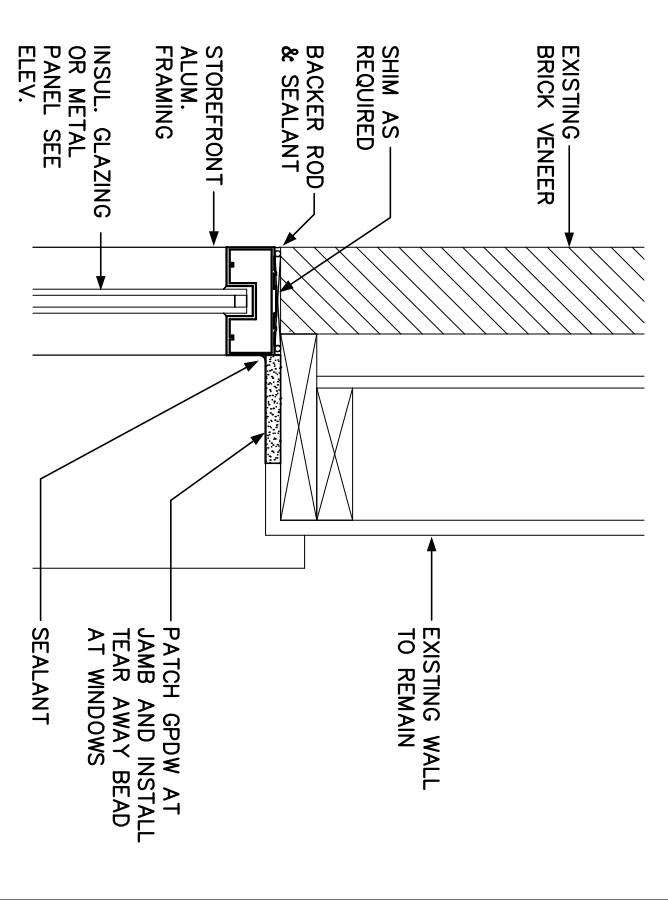
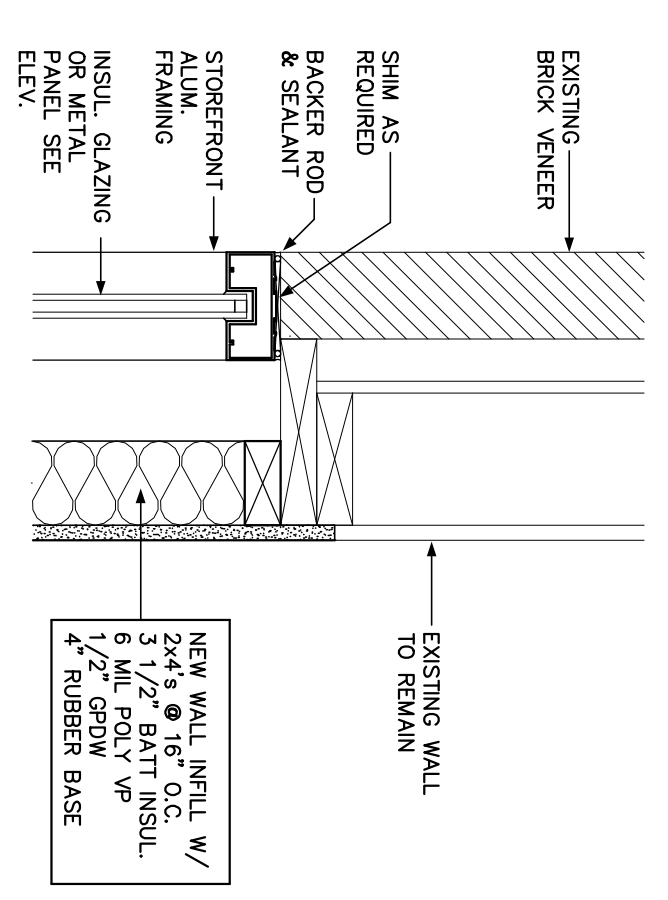
REPLACE EXG LOWER AT THIS PANEL AT ONE LOCATION - REFER DRAWING SHEET A20 FOR WINDOW & EXG DUTYWORK.



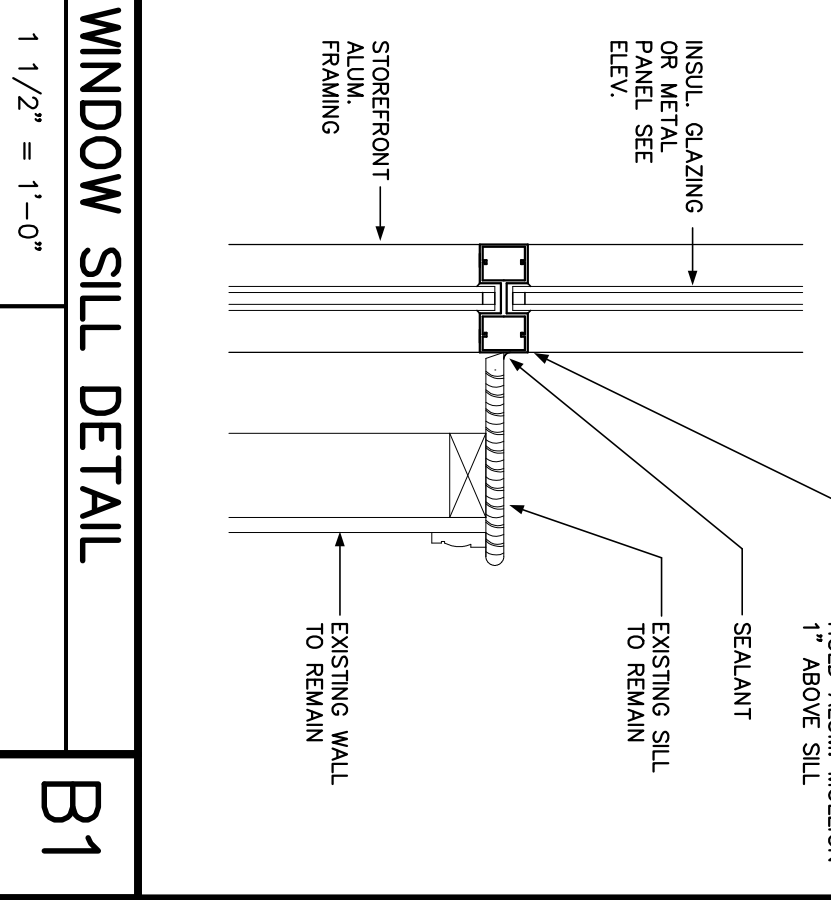
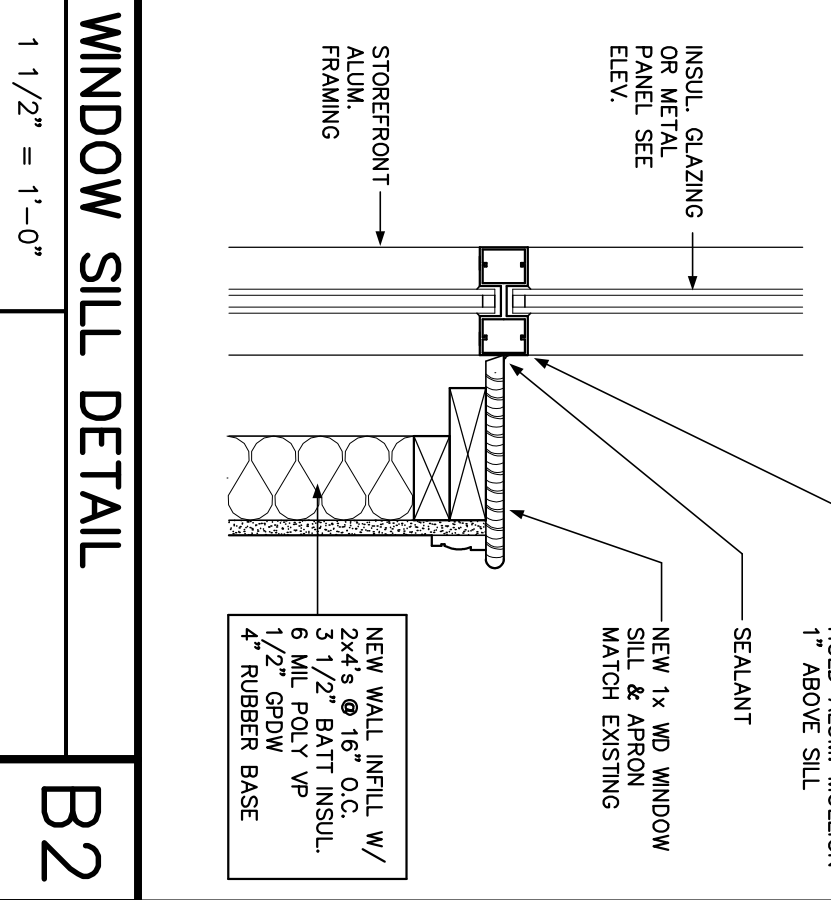
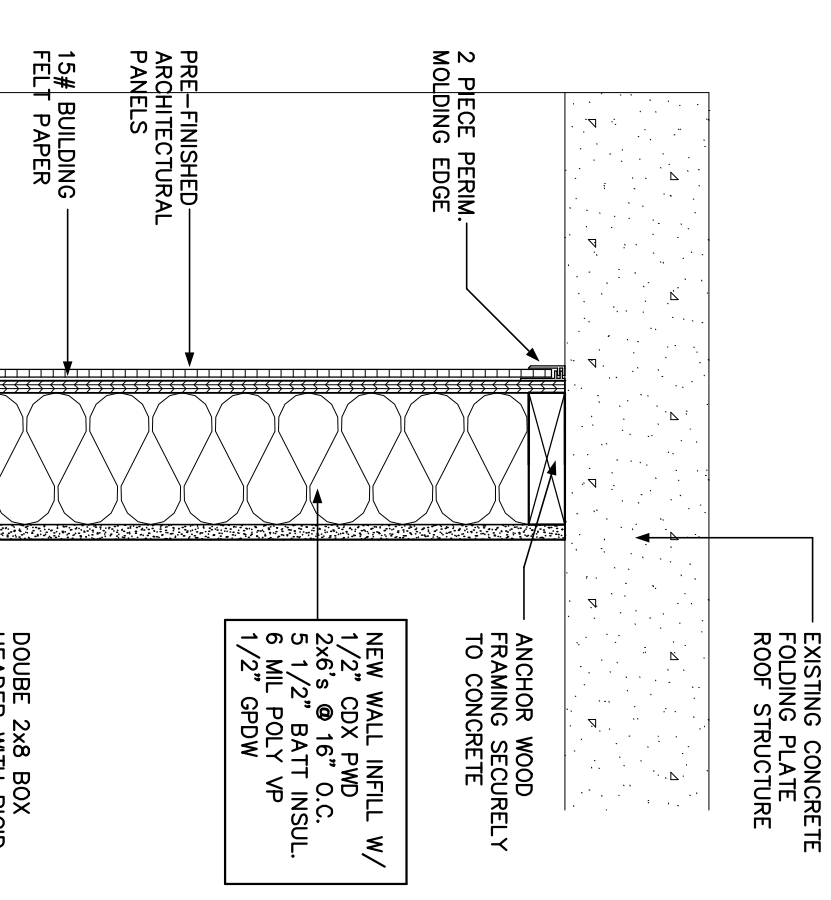
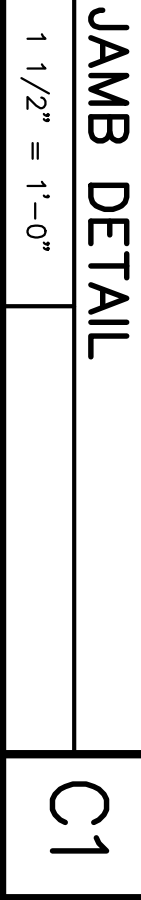
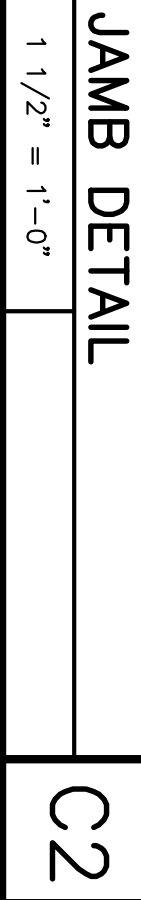
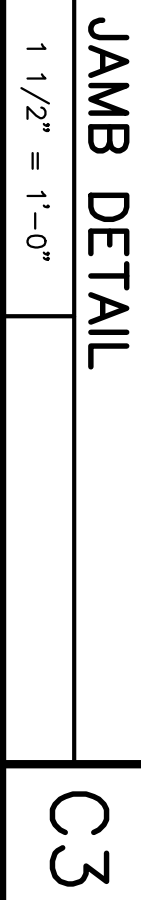
NOTES  
 FIELD VERIFY ALL DIMENSIONS AND CONDITIONS.  
 GLAZE ALL WINDOWS WITH INSULATED GLASS UNLESS OTHERWISE NOTED.  
 REFER TO DRAWING SHEET A20.1 FOR WINDOW LOCATIONS.  
 INDICATES 1" INSULATED METAL PANELS

**WINDOW TYPES**

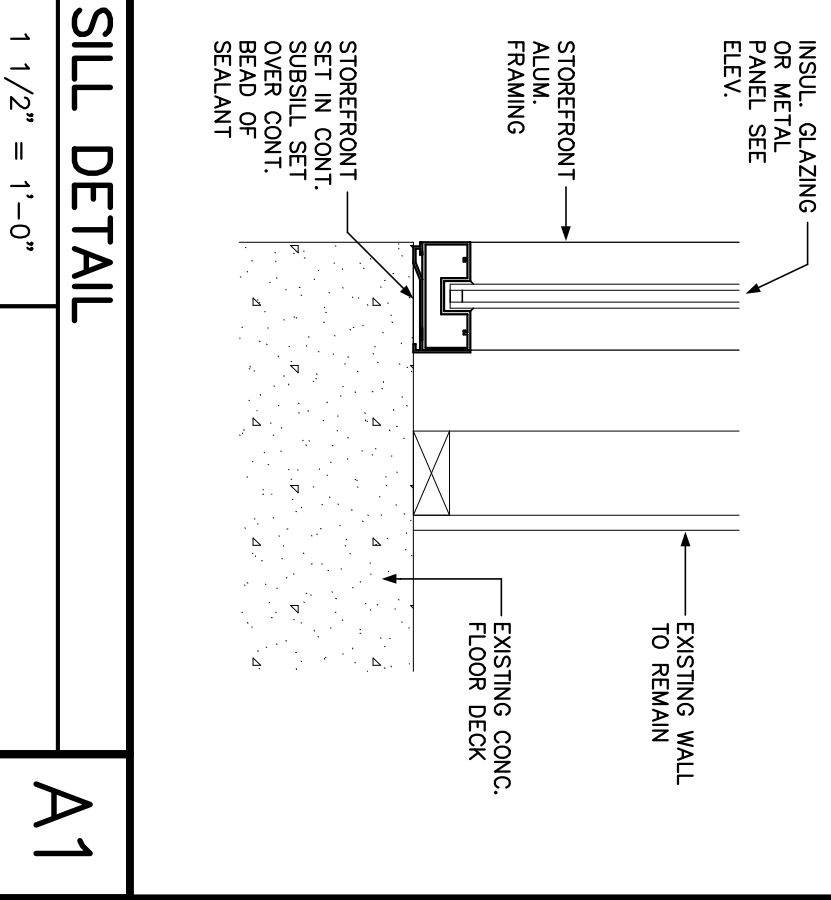
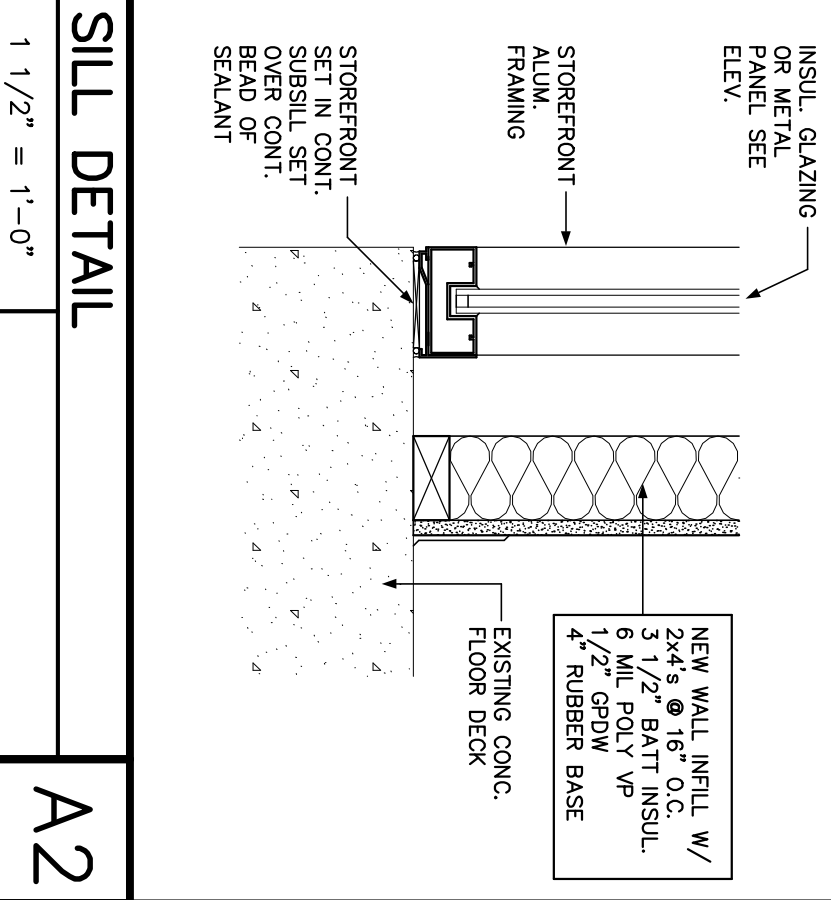
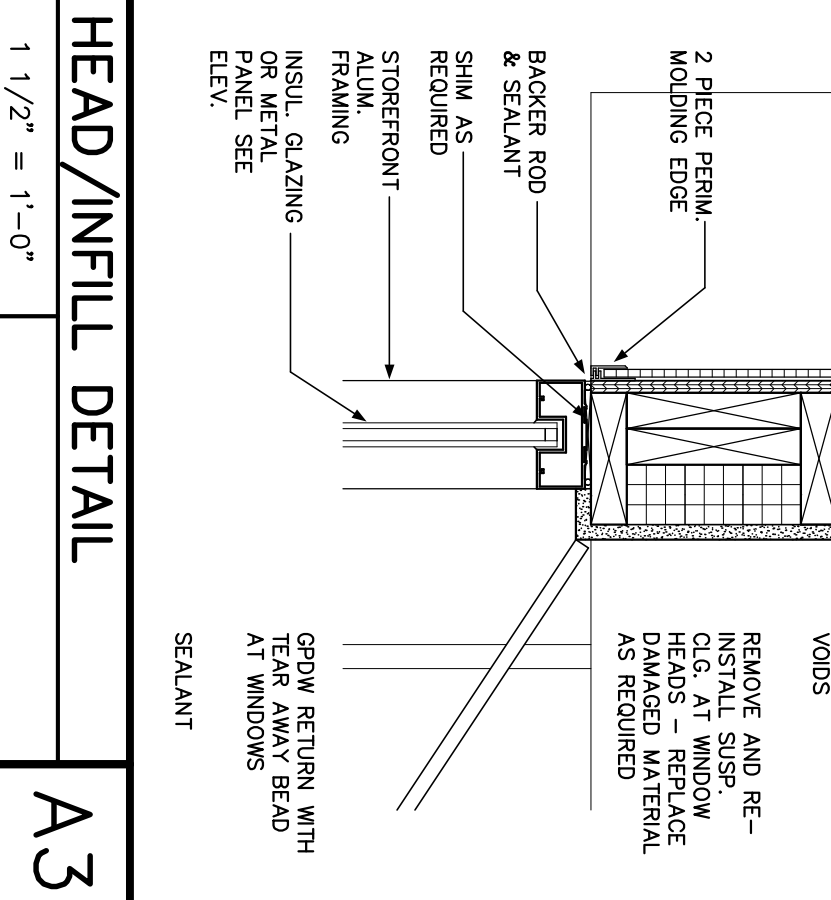
ALUMINUM STOREFRONT THERMALLY BROKEN (1-UNIT)



**WINDOW INFILL ELEV.**



**HEAD/INFILL DETAIL**



Window Title  
**WINDOW ELEVATIONS  
 AND DETAILS**  
 Drawing Number  
**A50.1**