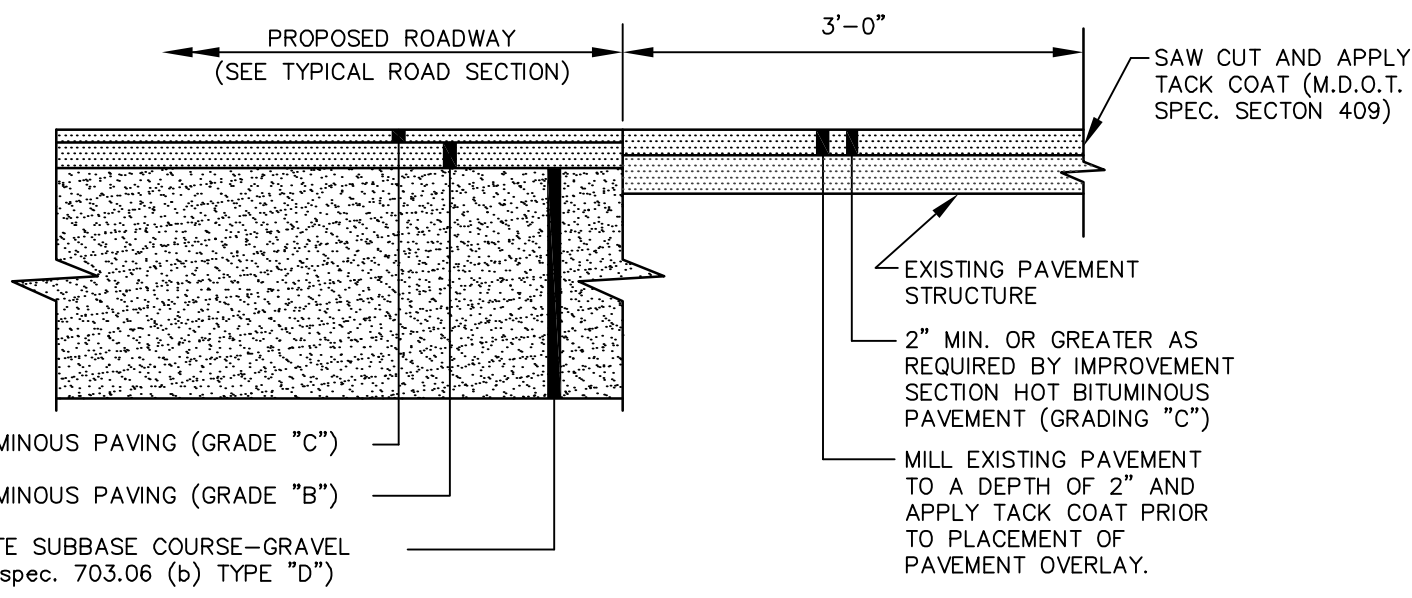
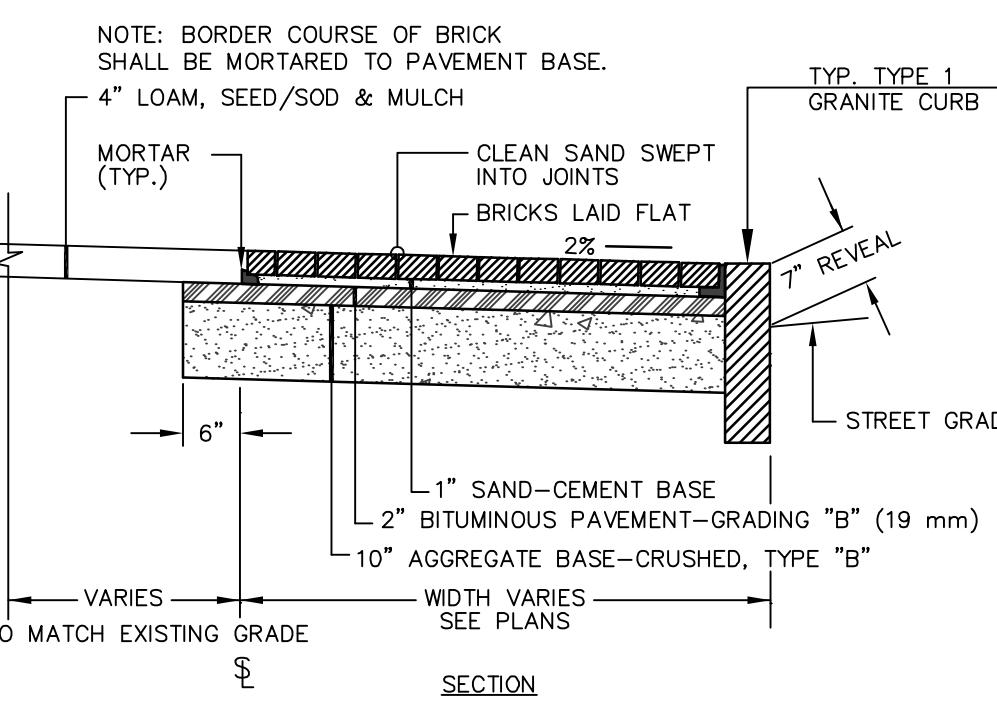


- NOTES:**
1. COMPACT GRAVEL SUBBASE, BASE COURSE TO 92% OF MAXIMUM DENSITY USING HEAVY ROLLER COMPACTION.
  2. CONTRACTOR SHALL SET GRADE STAKES MARKING SUBBASE AND FINISH GRADE ELEVATIONS FOR CONSTRUCTION REFERENCE.

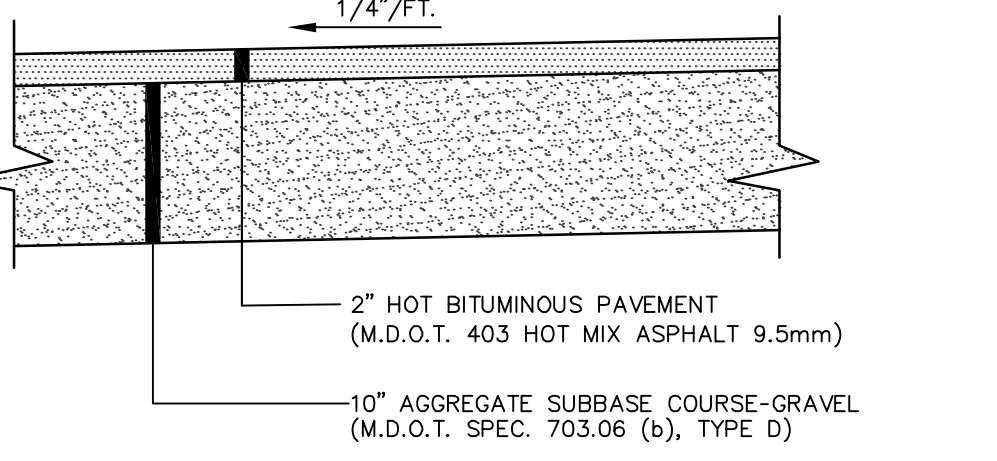
**TYP. PAVED DRIVEWAY SECTION**  
NOT TO SCALE



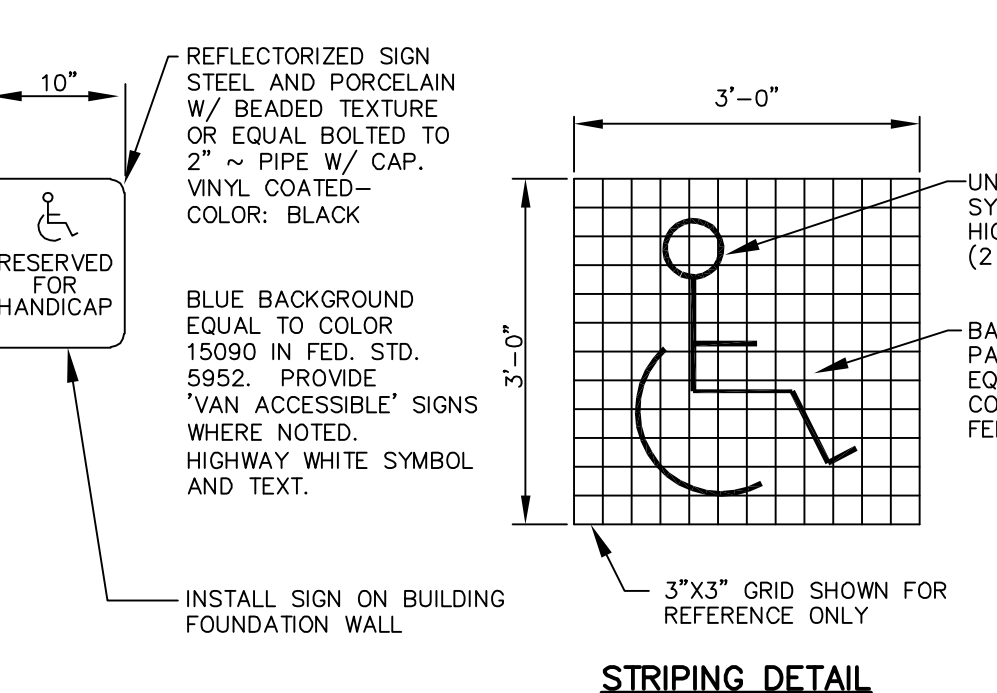
**PAVEMENT SAW CUT DETAIL**  
NOT TO SCALE



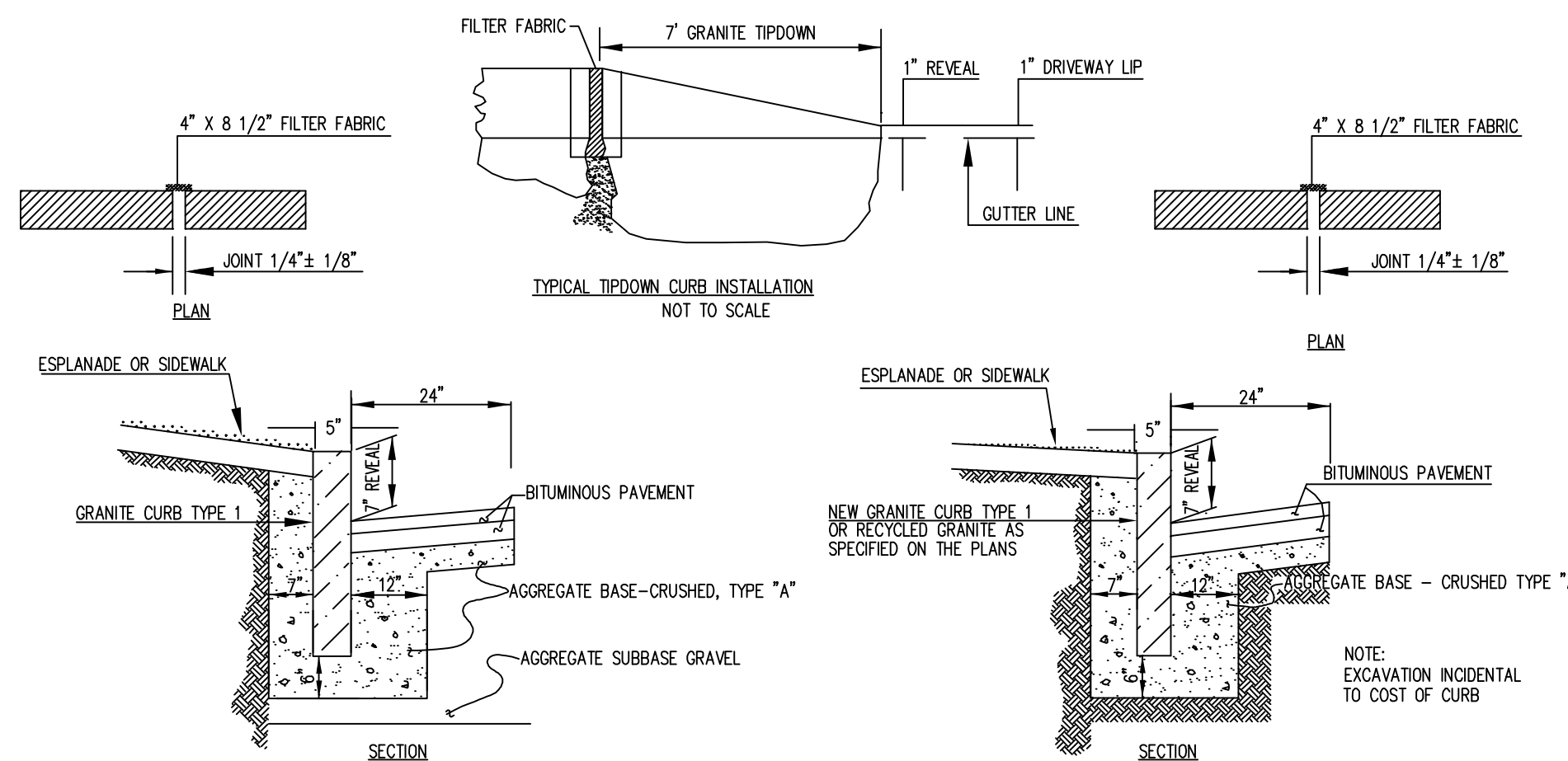
**BRICK SIDEWALK DETAIL**  
NOT TO SCALE



**BITUMINOUS SIDEWALK**  
NOT TO SCALE

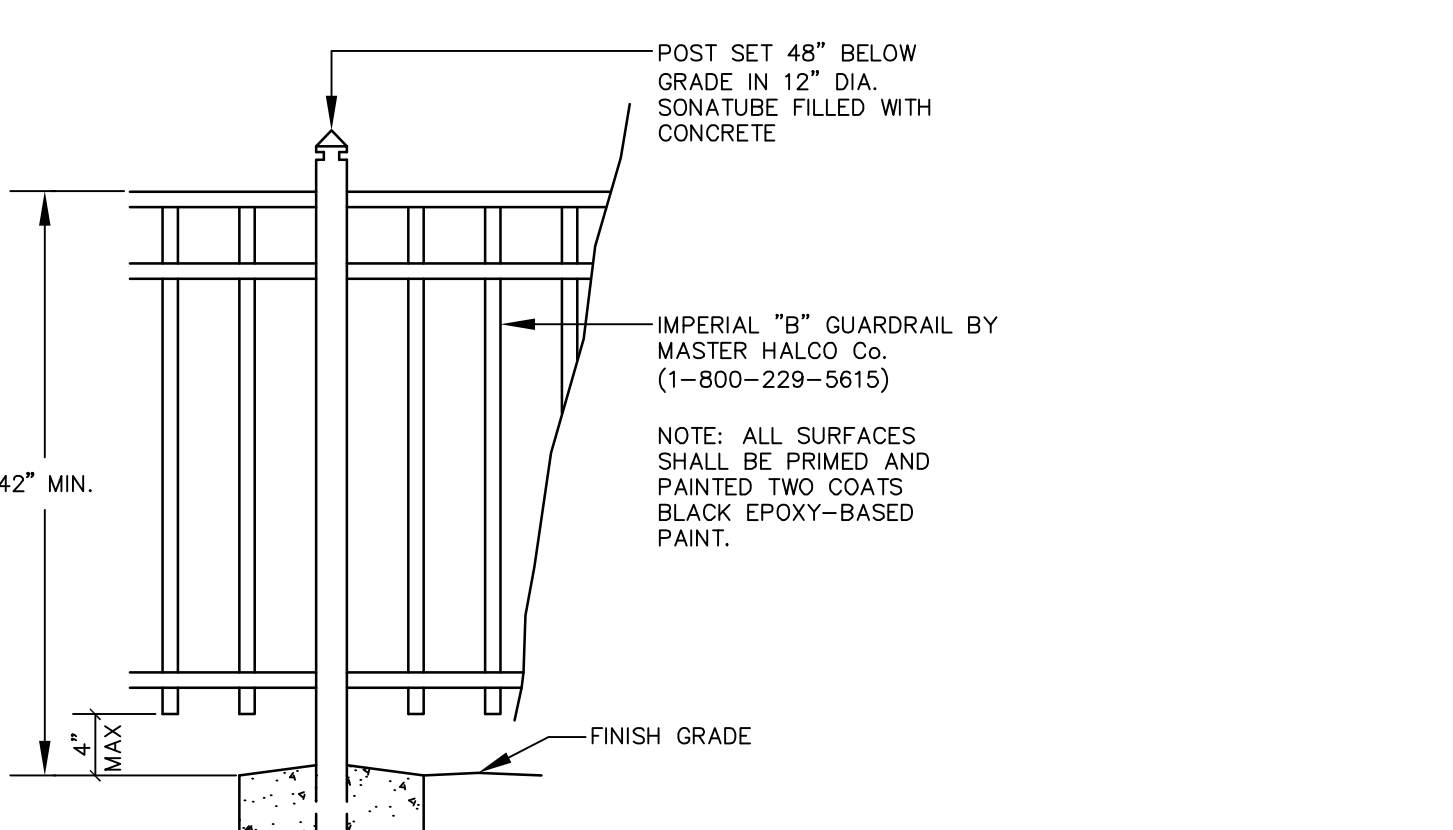


**HANDICAP SIGNS AND STRIPING**  
NOT TO SCALE

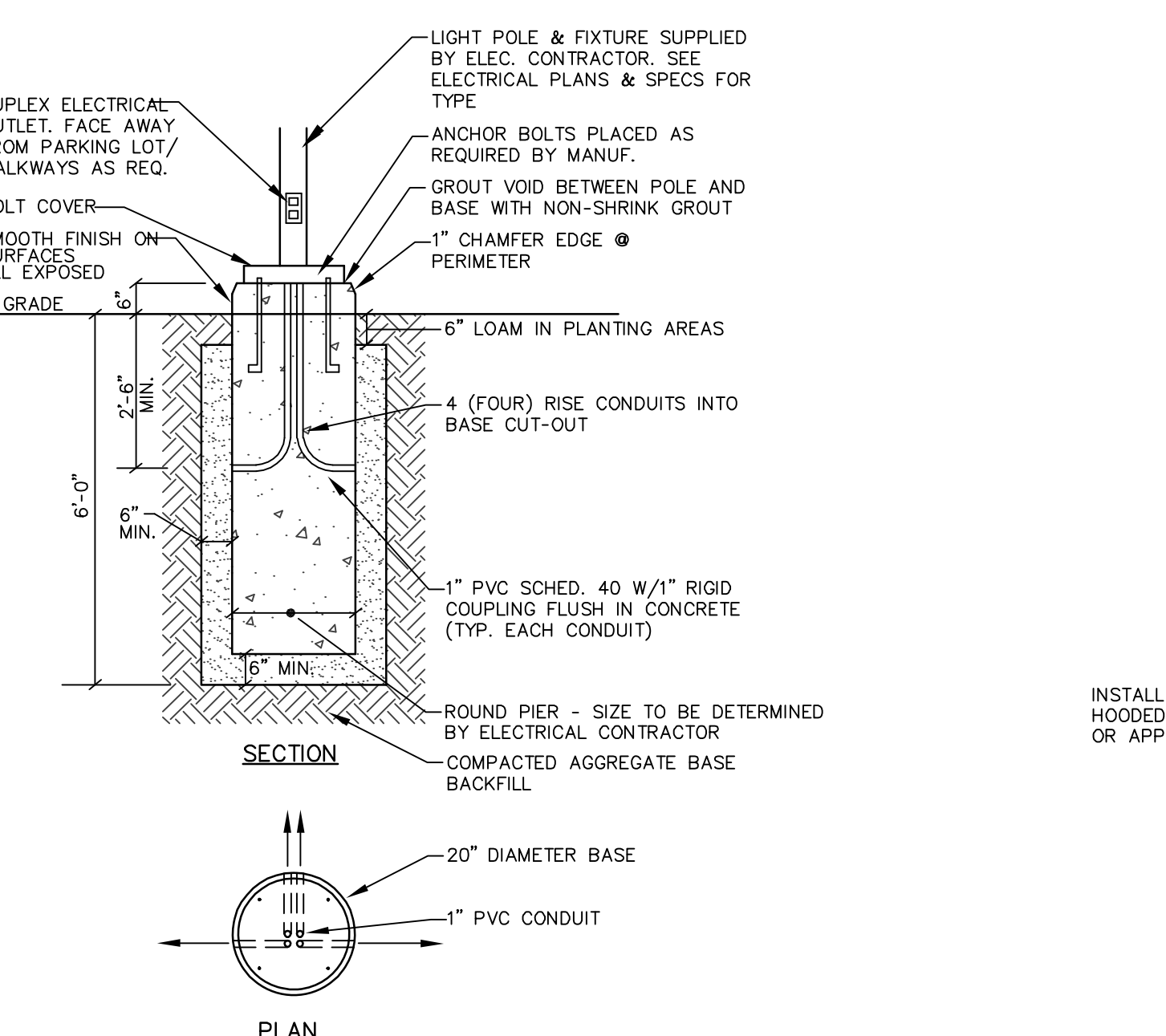


- NOTES:**
1. BRING TO SUBGRADE AS REQUIRED W/ COMMON BORROW COMPACTED TO 90% OF MAXIMUM DENSITY.
  2. NO GRANITE CURB SECTIONS SHALL BE INSTALLED LESS THAN 4 FT. IN LENGTH.

**INSTALLATION OF CURB, TYPE 1**  
NOT TO SCALE

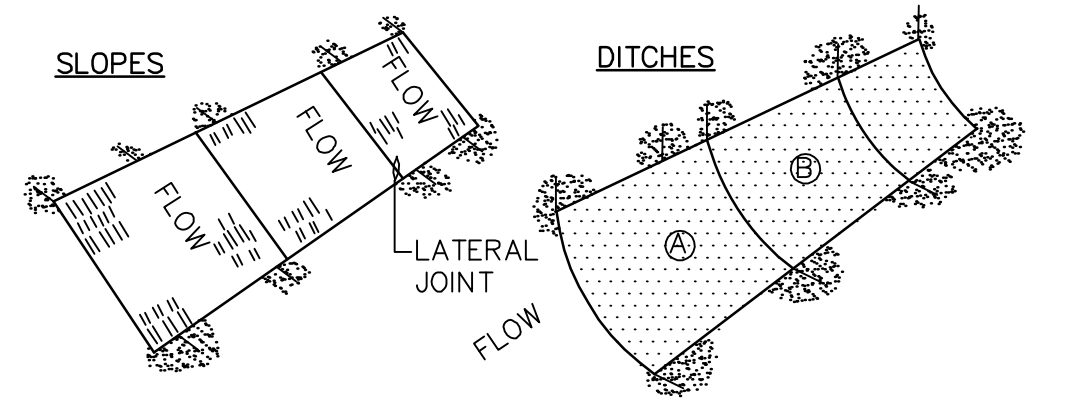


**PEDESTRIAN GUARDRAIL (ALUMINUM TUBING)**  
NOT TO SCALE



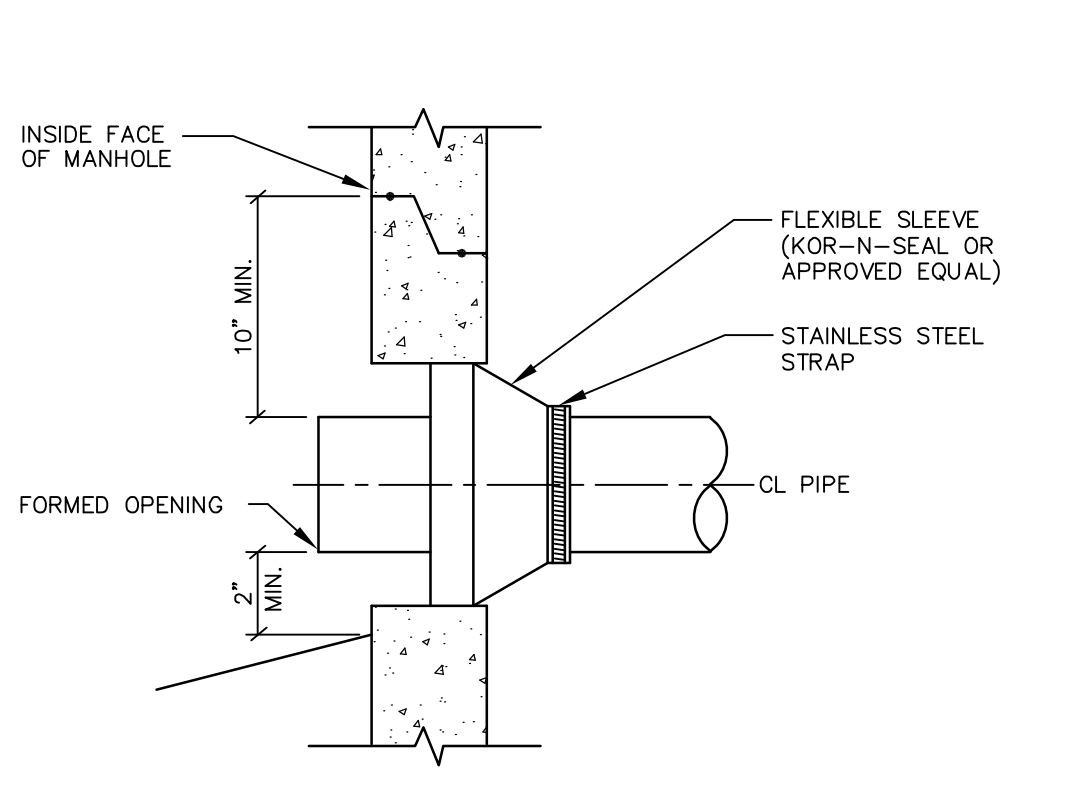
- NOTES:**
1. CONCRETE (f<sub>c</sub>=5000 psi, @ 28 DAYS) WITH STEEL REINFORCEMENT.
  2. CONDUIT AND ANCHOR BOLTS PLACED AS REQUIRED PROVIDED BY ELECTRICAL CONTRACTOR.
  3. PROVIDE 2 COATS BITUMINOUS DAMPROOFING FOR ALL CONCRETE BELOW GRADE.
  4. INSTALL BASE 3'-0" ABOVE FINISH GRADE IN LOCATIONS WHERE POLES ARE IN PARKING LOT PAVEMENT.
  5. LIGHT POLE BASE AS MANUFACTURED BY SUPERIOR CONCRETE OR APPROVED EQUAL.

**20" ROUND LIGHT POLE BASE**  
NOT TO SCALE



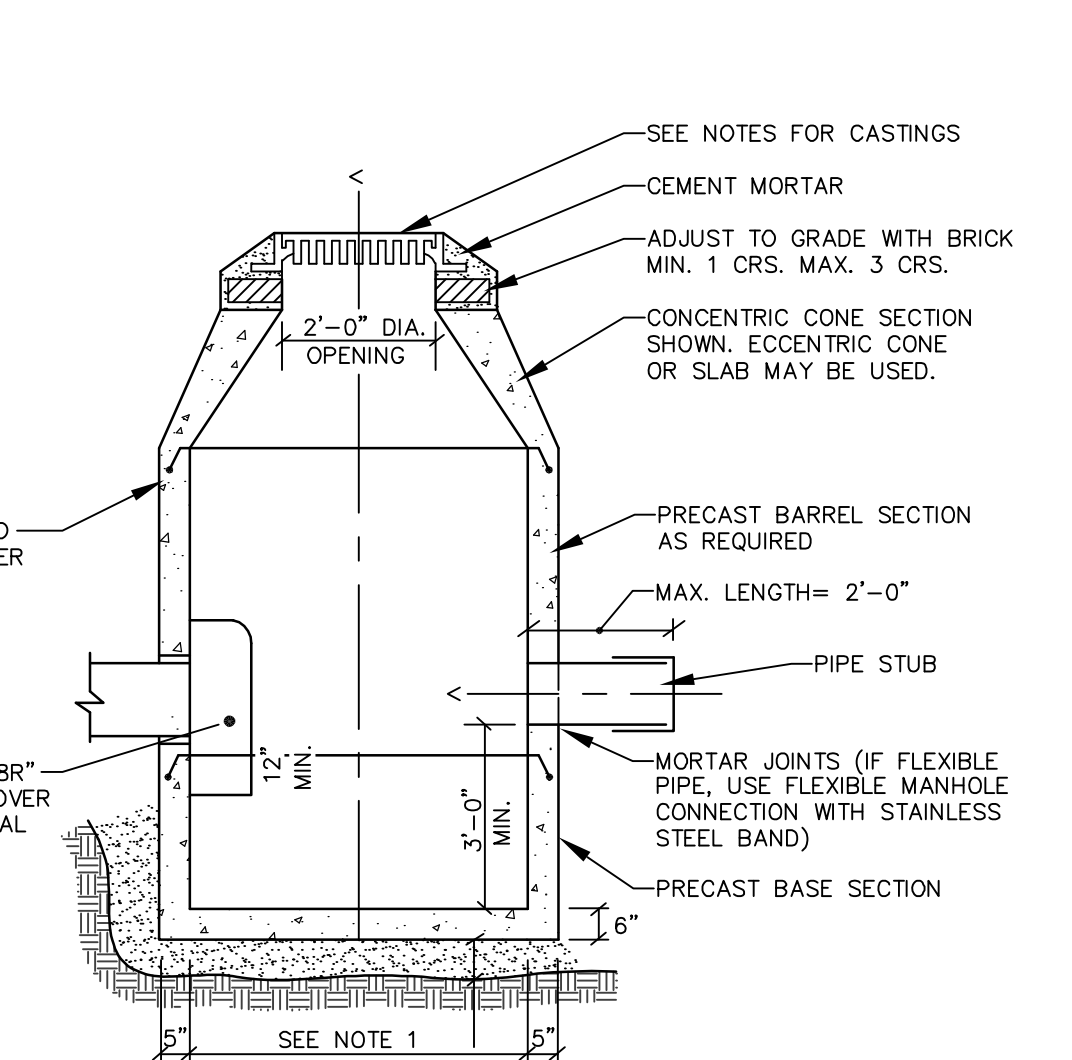
- NOTES:**
1. BURY THE TOP END OF THE MESH MATERIAL IN A 6" TRENCH AND BACKFILL AND TAMP TRENCHING SECURE END WITH STAPLES AT 6" SPACING, 4" DOWN FROM EXPOSED END.
  2. FLOW DIRECTION JOINTS TO HAVE UPPER END OF LOWER STRIP BURIED WITH UPPER LAYERS OVERLAPPED 4" AND STAPLED. OVERLAP B OVER A.
  3. LATERAL JOINTS TO HAVE 4" OVERLAP OF STRIPS. STAPLE 18" ON CENTER.
  4. STAPLE OUTSIDE LATERAL EDGE 2" ON CENTER.
  5. WIRE STAPLES TO BE MIN OF #11 WIRE 6" LONG AND 1-1/2" WIDE.
  6. USE NORTH AMERICAN GREEN DS 150 OR APPROVED EQUAL.

**EROSION CONTROL BLANKET**  
NOT TO SCALE



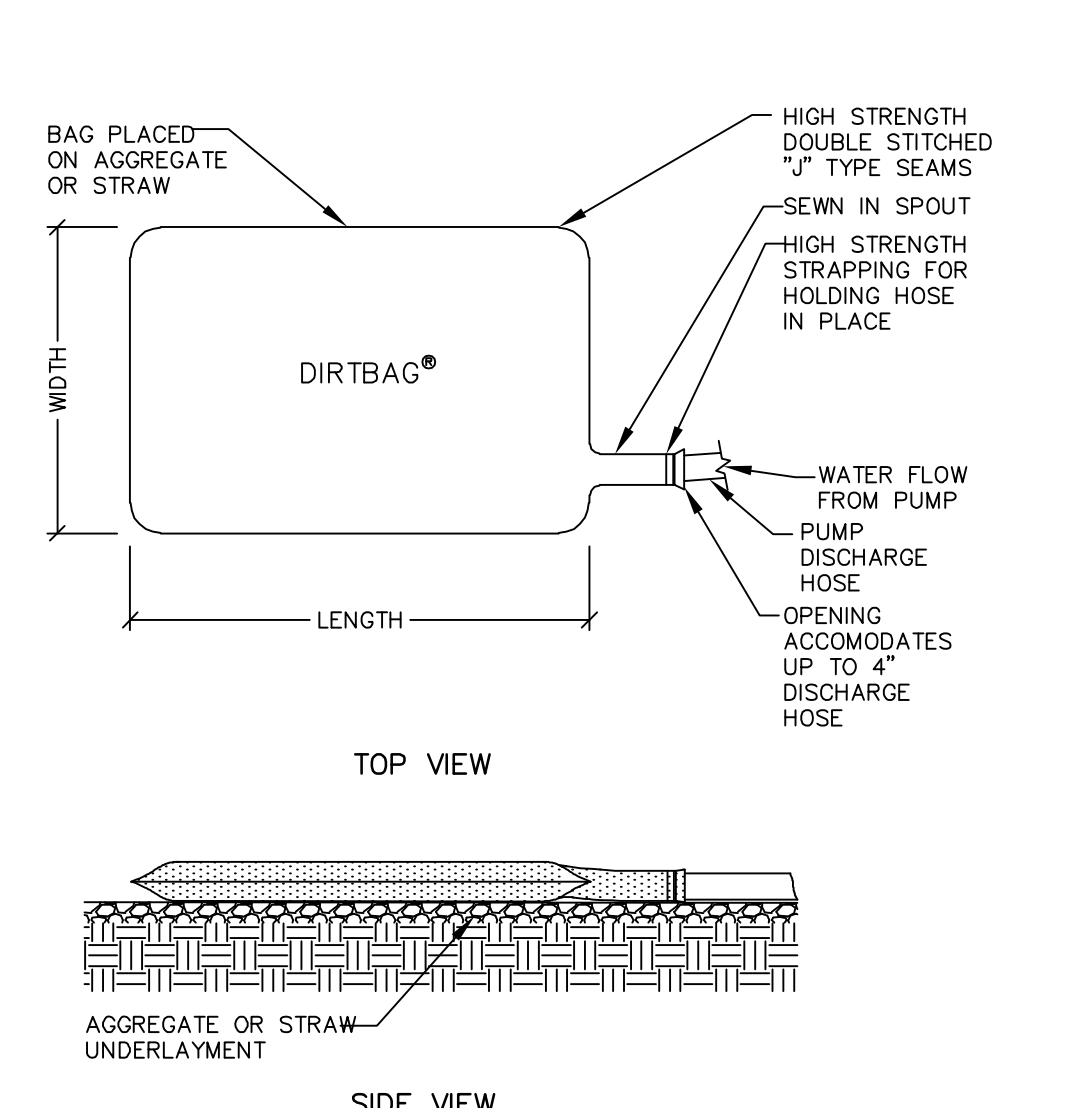
- NOTE:**
- ALL NEW PENETRATIONS INTO EXISTING MANHOLES SHALL BE PERFORMED BY PORTLAND WATER DISTRICT CREWS. TO SCHEDULE WORK, CONTACT THE DISTRICT'S WASTEWATER OPERATIONS DIVISION AT LEAST TWO WORKING DAYS PRIOR TO THE DATE THE WORK IS TO BE PERFORMED.

**NEW PIPE TO EXISTING MANHOLE CONNECTION - 4" TO 24"**  
NOT TO SCALE

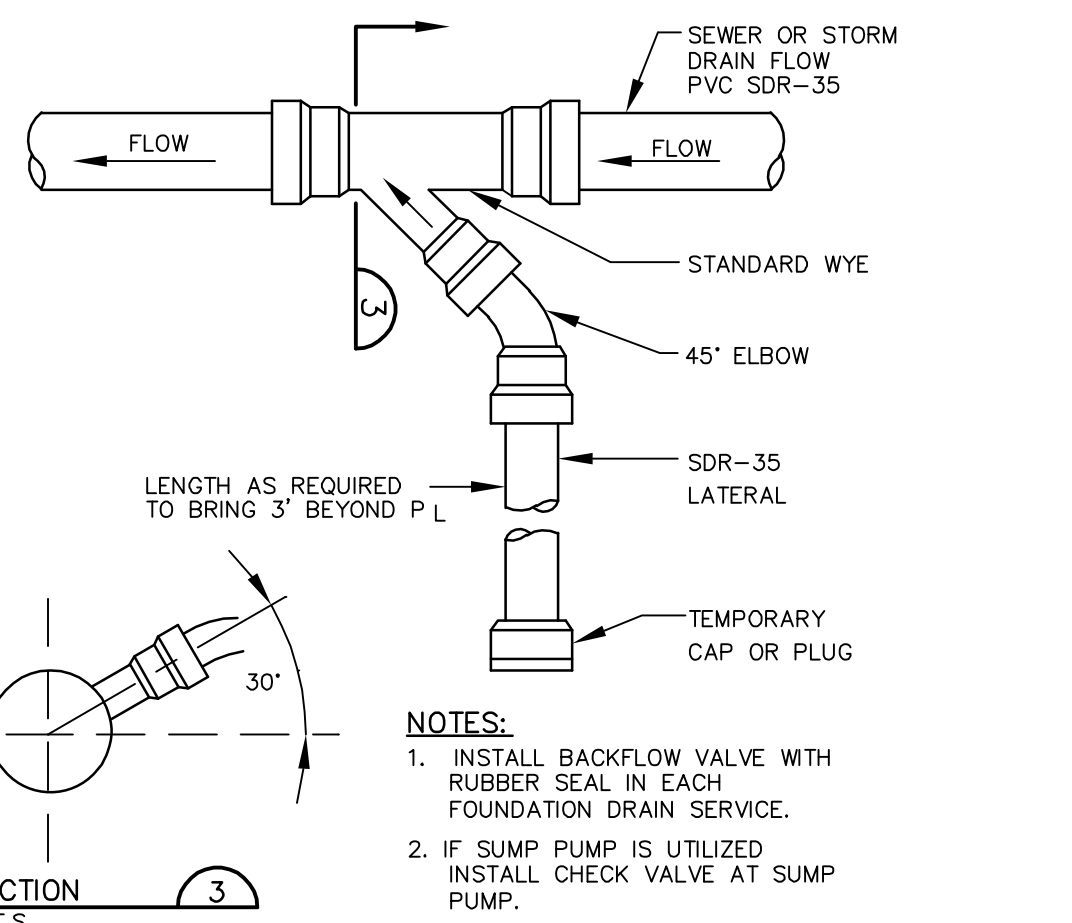


- NOTES:**
1. 4'-0" I.D. TYPICAL. SOME STRUCTURES MAY REQUIRE LARGER I.D. PROVIDE SHOP DRAWINGS.
  2. DRAINAGE STRUCTURES TO BE DESIGNED FOR H=20 LOADING.
  3. PIPE SIZES AND INVERTS AS NOTED ON PLANS.
  4. CATCH BASIN FRAME AND GRATE TO BE EAST JORDAN FOUNDRY 5250, OR APPROVED EQUAL.
  5. DRAIN MANHOLE FRAME AND GRATE TO BE EAST JORDAN FOUNDRY 1080, TYPE A OR APPROVED EQUAL. COVER SHALL BE MARKED "DRAIN".

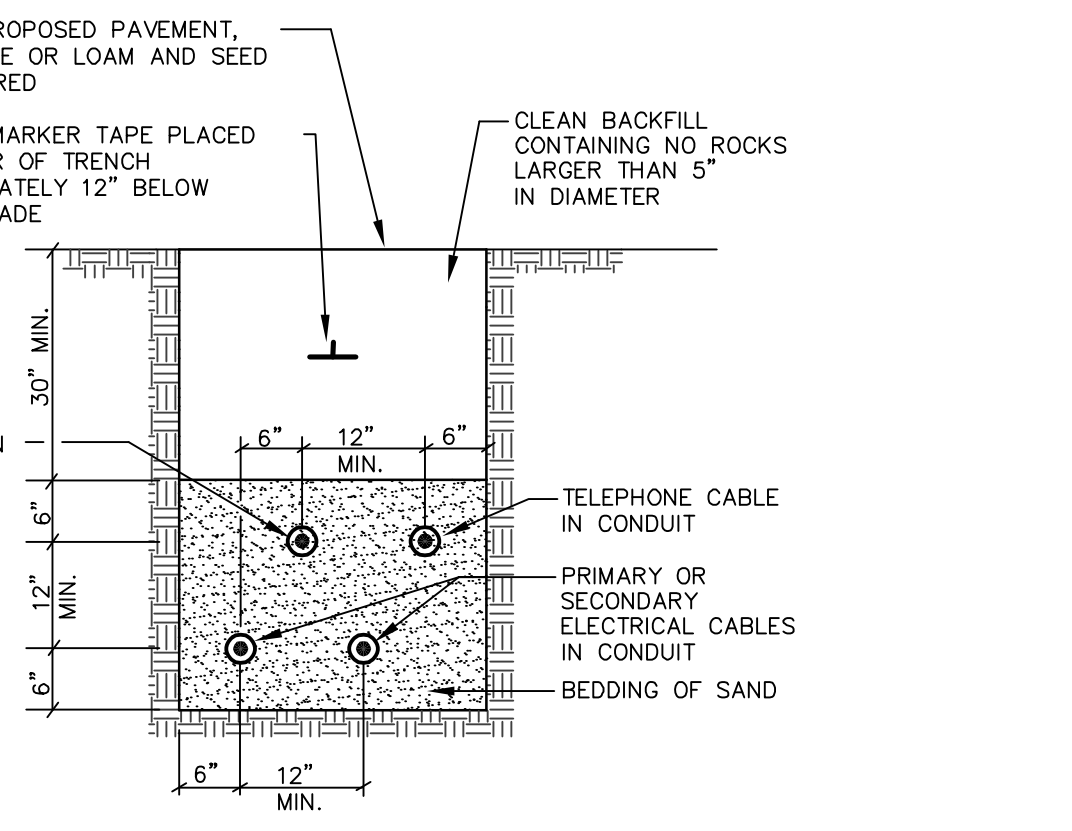
**TYPICAL DRAINAGE MANHOLE/CATCH BASIN**  
NOT TO SCALE



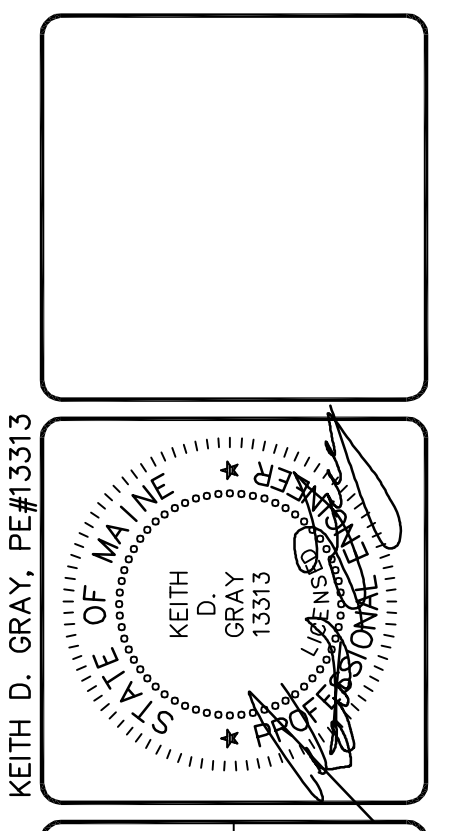
**DIRTBAG PUMPED SILT CONTROL SYSTEM**  
NOT TO SCALE



**SEWER / FOUNDATION DRAIN SERVICE CONNECTION**  
NOT TO SCALE



**TYPICAL UNDERGROUND CABLE INSTALLATION**  
NOT TO SCALE



DESIGNED	CHECKED
KDG	KDG

A. WTC 12/15/16 CITY SUBMITTAL NO. 1  
 REV. BY: DATE: STATUS:  
 THIS PLAN SHALL NOT BE MODIFIED WITHOUT WRITTEN PERMISSION FROM SEBAGO TECHNICS, INC. ANY ALTERATIONS AUTHORIZED OR OTHERWISE, SHALL BE AT THE USER'S SOLE RISK AND WITHOUT LIABILITY TO SEBAGO TECHNICS, INC.

**SEBAGO TECHNICS**

WWW.SEBAGO TECHNICS.COM

75 John Roberts Rd. Suite 1A Lewiston, ME 04240  
 250 Goddard Rd. Suite B Lewiston, ME 04240  
 Tel. 207-200-9100 Tel. 207-783-5656

**DETAILS**

OF: 218-220 WASHINGTON AVENUE  
 218-220 WASHINGTON AVENUE  
 PORTLAND, MAINE

FOR: 218-220 WASHINGTON AVENUE LLC  
 199 ELDERBERRY ROAD  
 SOUTH PORTLAND, MAINE 04106

PROJECT NO.	SCALE
06172	AS SHOWN

SHEET 8B OF 23