

# 218-220 WASHINGTON AVENUE

218-220 WASHINGTON AVENUE  
PORTLAND, MAINE

APPLICANT:  
218-220 WASHINGTON  
AVENUE LLC  
199 ELDERBERRY ROAD  
SOUTH PORTLAND, MAINE 04106

ENGINEER/SURVEYOR:

**SEBAGO**  
TECHNICS

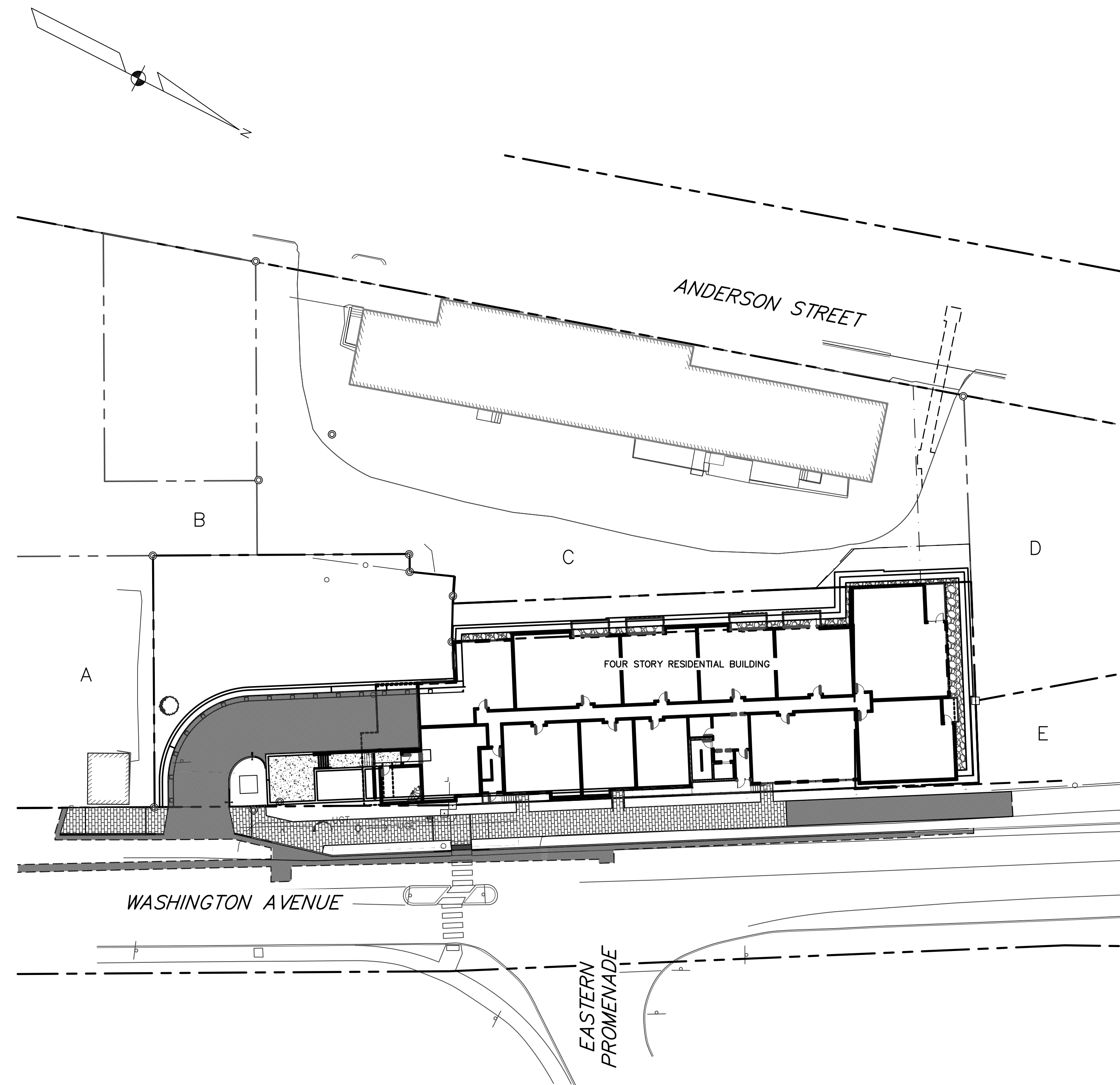
WWW.SEAGOTECHNICS.COM  
75 John Roberts Rd. Suite 1A South Portland, ME 04106  
250 Goddard Rd. Suite B Lewiston, ME 04240  
Tel. 207-200-2100 Tel. 207-783-5656

PROJECT ARCHITECT:

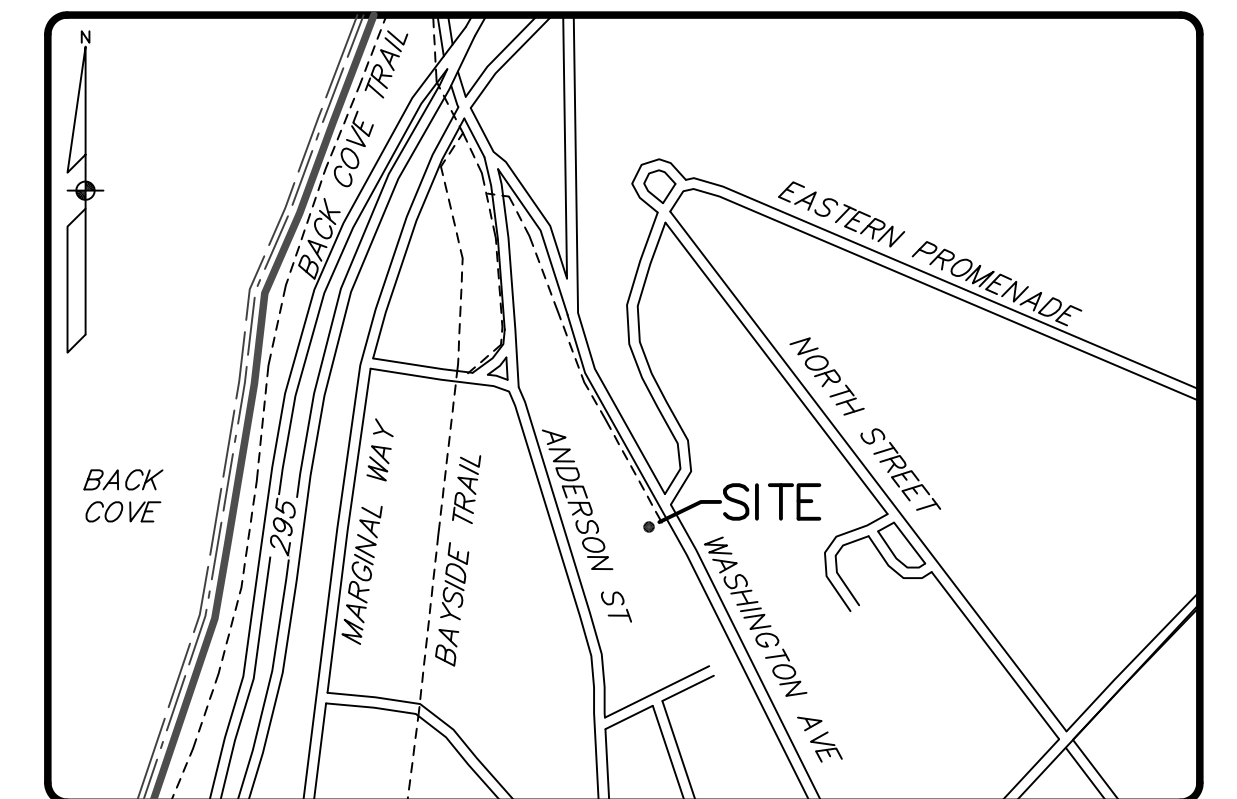
ARCHETYPE  
ARCHITECTS  
48 UNION WHARF  
PORTLAND, MAINE

LIST OF ABUTTERS:

KEY	ABUTTER	BOOK/PAGE
A	202 WASHINGTON LLC	25509/156
B	203 ANDERSON LLC	21587/100 & 21587/96
C	ROCKINGHAM LLC	27757/278
D	PINE STATE ELEVATOR CO.	6106/327
E	STATE OF MAINE	-



SCALE: 1" = 30'



LOCATION MAP

NTS

SHEET INDEX:

INDEX OF PLANS	
SHEET NO.	SHEET TITLE
1	COVER SHEET
2	EXISTING CONDITIONS PLAN
3	SUBDIVISION PLAT
4A	DEMOLITION PLAN
4B	DEMOLITION PLAN
5A	SITE PLAN LOWER LEVEL
5B	SITE PLAN LOWER LEVEL
5C	SITE PLAN UPPER LEVEL
5D	SITE PLAN UPPER LEVEL
6	UTILITY PLAN
7A	GRADING PLAN LOWER LEVEL
7B	GRADING PLAN LOWER LEVEL
7C	GRADING PLAN UPPER LEVEL
7D	GRADING PLAN UPPER LEVEL
7E	PRE-DEVELOPMENT WATERSHED PLAN
7F	POST-DEVELOPMENT WATERSHED PLAN
8A	DETAILS
8B	DETAILS
8C	DETAILS
8D	DETAILS
8E	DETAILS
9A	LANDSCAPE PLAN
9B	LANDSCAPE PLAN