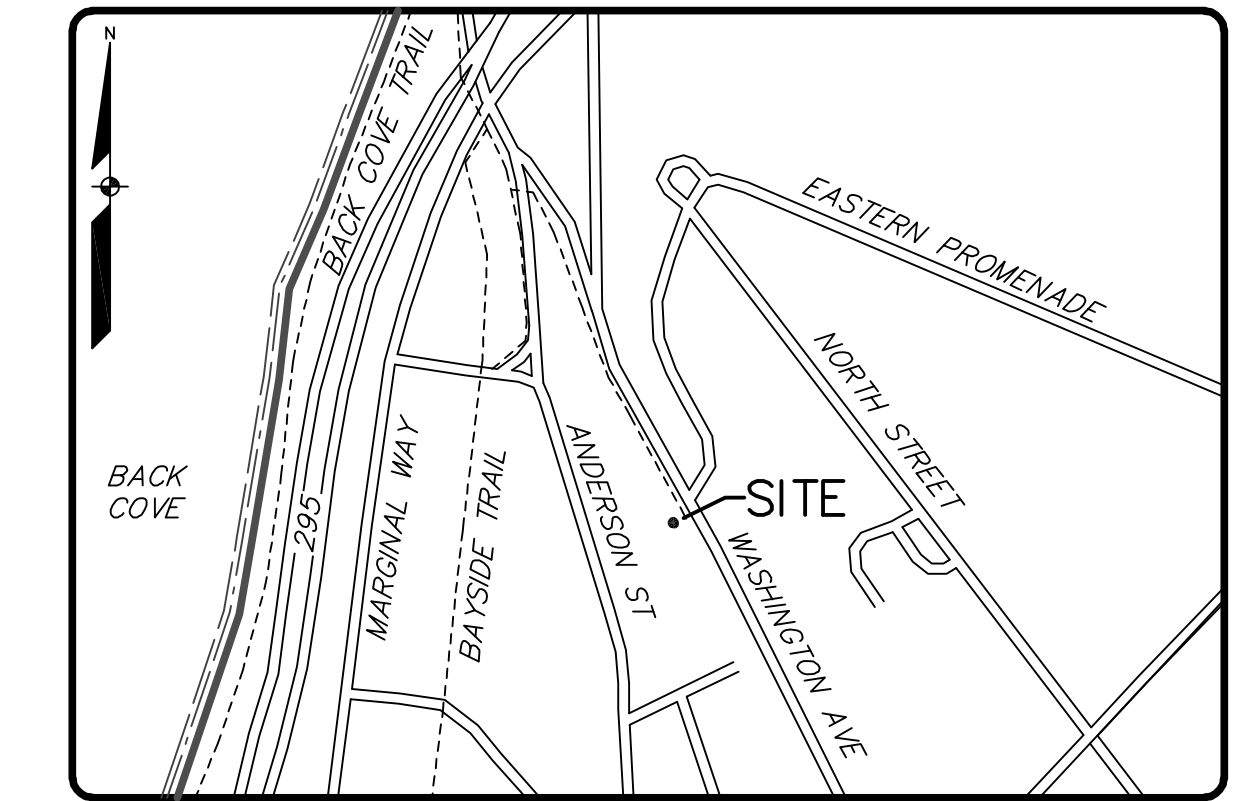


218-220 WASHINGTON AVENUE

218-220 WASHINGTON AVENUE
PORTLAND, MAINE



LOCATION MAP NTS

APPLICANT:
218-220 WASHINGTON AVENUE LLC
199 ELDERBERRY ROAD
SOUTH PORTLAND, MAINE 04106

ENGINEER/SURVEYOR:



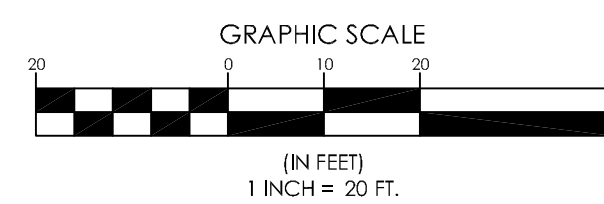
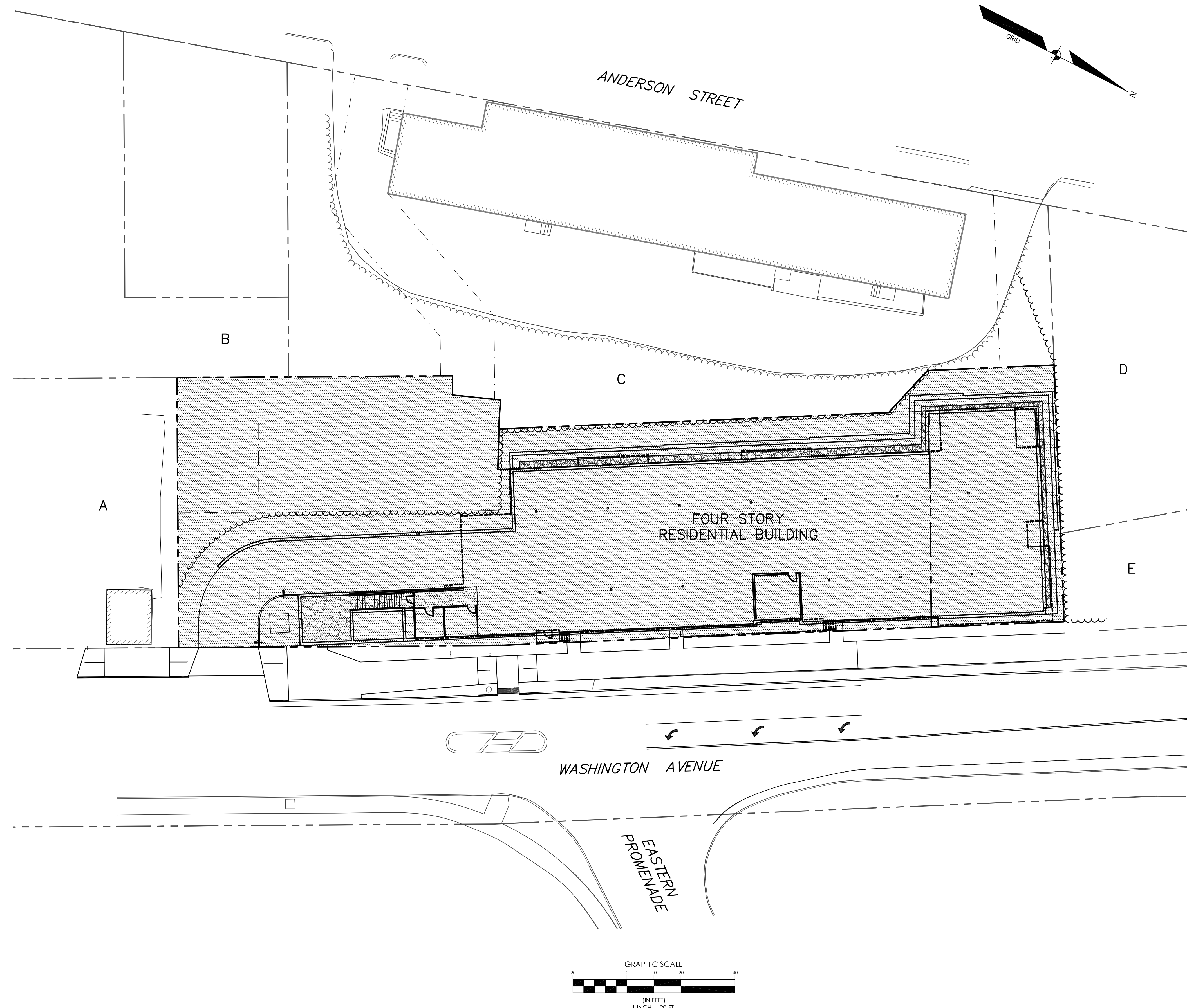
WWW.SEAGOTECHNICS.COM
75 John Roberts Rd. Suite 1A South Portland, ME 04106 Tel. 207-200-2100
250 Goddard Rd. Suite B Lewiston, ME 04240 Tel. 207-783-5656

PROJECT ARCHITECT:

ARCHETYPE ARCHITECTS
48 UNION WHARF
PORTLAND, MAINE

LIST OF ABUTTERS:

KEY	ABUTTER	BOOK/PAGE
A	202 WASHINGTON LLC	25509/156
B	203 ANDERSON LLC	21587/100 & 21587/96
C	ROCKINGHAM LLC	27757/278
D	PINE STATE ELEVATOR CO.	6106/327
E	STATE OF MAINE	-



INDEX OF PLANS

SHEET NO.	SHEET TITLE
1	COVER SHEET
2	DEMOLITION PLAN
3	SITE PLAN LOWER LEVEL
4	SITE PLAN UPPER LEVEL
5	UTILITY PLAN
6	GRADING PLAN LOWER LEVEL
7	GRADING PLAN UPPER LEVEL
8	LANDSCAPE PLAN
9	DETAILS
10	DETAILS
11	DETAILS
12	DETAILS
1.	PRE DEVELOPMENT WATERSHED PLAN
2.	POST-DEVELOPMENT WATERSHED PLAN