

SANITARY SEWER STRUCTURE DATA				
STRUCTURE	RIM	INV. IN	INV. OUT.	DIAM.
SMH-10	65.30	58.35 (S-1)	58.25 (S-2)	48"

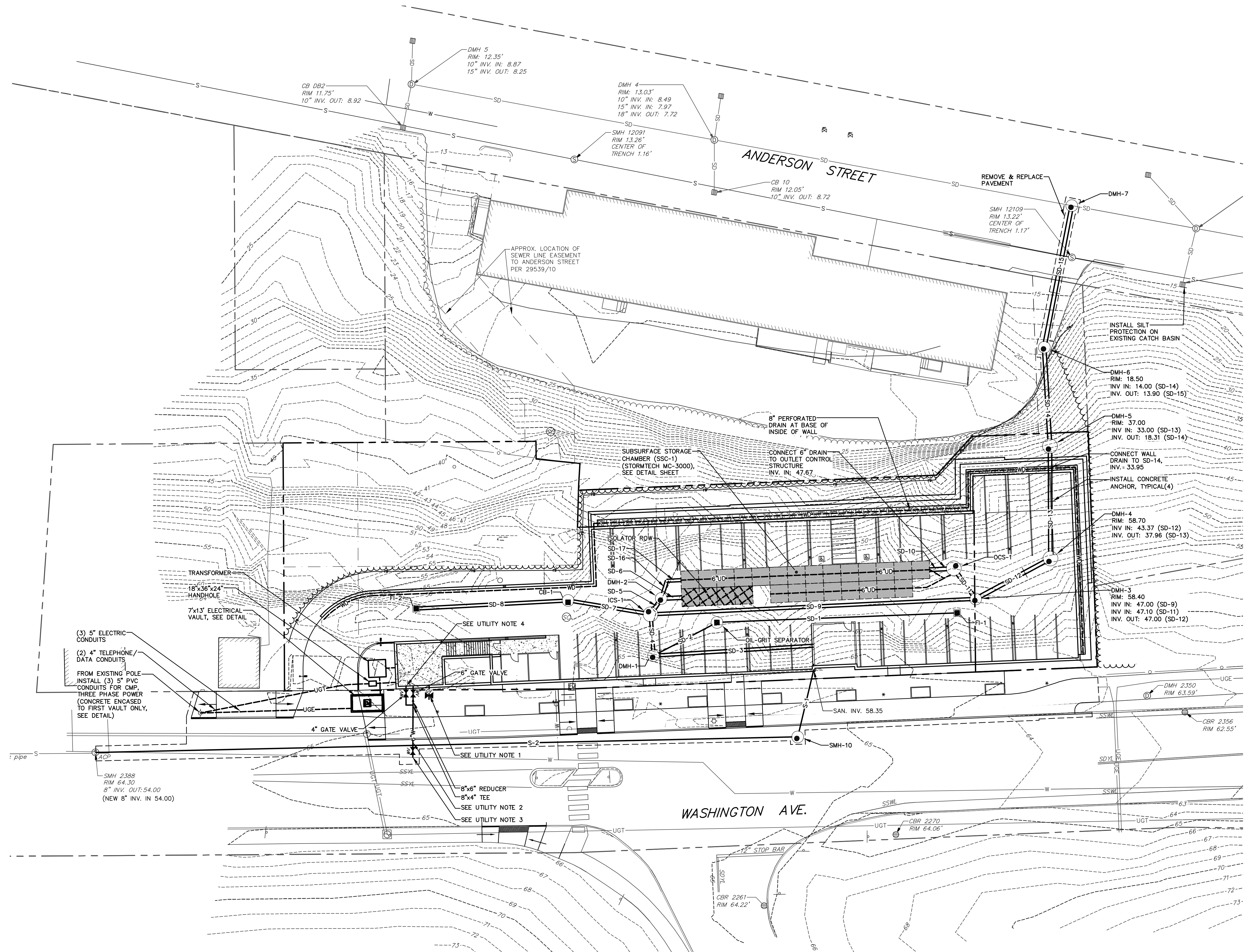
SANITARY SEWER PIPE DATA			
NAME	SIZE	LENGTH	SLOPE
S-1	8"	26'	0.086%
S-2	8"	281'	1.227%

STORM DRAIN STRUCTURE DATA				
STRUCTURE	RIM	INV. IN	INV. OUT.	DIAM.
CB-1	58.70	53.00 (SD-8)	52.90 (SD-7)	48"
DMH-1	58.90	52.50 (SD-3) 54.00 (SD-2)	52.10 (SD-4)	48"
DMH-2	58.60	51.28 (SD-5)	51.28 (SD-6) 51.65 (SD-16)	48"
DMH-3	58.40	47.00 (SD-9) 47.10 (SD-11)	47.00 (SD-12)	48"
DMH-4	58.70	43.37 (SD-12)	37.96 (SD-13)	60"
DMH-5	37.00	33.00 (SD-13)	18.31 (SD-14)	60"
DMH-6	18.50	14.00 (SD-14)	13.90 (SD-15)	48"
DMH-7	12.80	7.45 (SD-15)		48"
FI-1	58.30		55.30 (SD-1)	2'x2'
FI-2	62.55		53.80 (SD-8)	2'x2'
ICS-1	58.60	51.42 (SD-7) 51.42 (SD-4)	51.32 (SD-8) 51.32 (SD-5)	60"
OCS-1	58.60	50.80 (SD-10)	47.57 (SD-11)	60"
OIL-GRIT SEPARATOR	58.30	54.52 (SD-1)	54.42 (SD-2)	48"

STORM DRAIN PIPE DATA			
NAME	SIZE	LENGTH	SLOPE
SD-1	10"	94'	0.830%
SD-2	10"	25'	1.689%
SD-3	12"	62'	2.067%
SD-4	12"	12'	5.549%
SD-5	15"	3'	1.256%
SD-6	15"	6'	0.481%
SD-7	12"	29'	5.058%
SD-8	12"	58'	1.372%
SD-9	12"	127'	3.408%
SD-10	15"	7'	6.192%
SD-11	15"	11'	4.407%
SD-12	15"	30'	12.202%
SD-13	14"	40'	12.298%
SD-14	15"	35'	12.170%
SD-15	15"	54'	11.895%
SD-16	12"	5'	3.655%
SD-17	12"	6'	3.518%

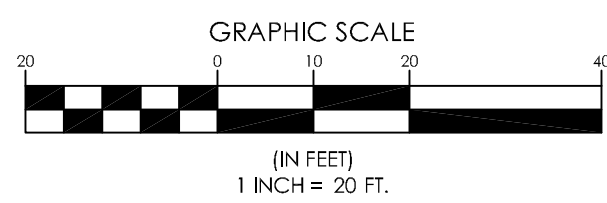
GRADING & UTILITY NOTES:

- UTILITY INFORMATION DEPICTED HEREON IS COMPILED USING PHYSICAL EVIDENCE LOCATED IN THE FIELD AND PRECEDING PLANS. UTILITIES DEPICTED HEREON MAY NOT NECESSARILY REPRESENT ALL EXISTING UTILITIES. CONTRACTORS AND/OR DESIGNERS NEED TO CONTACT DIG-SAFE SYSTEMS, INC. (1-888-DIG-SAFE) AND FIELD VERIFY EXISTING UTILITIES PRIOR TO CONSTRUCTION AND/OR EXCAVATION.
- THE PROJECT IS TO BE SERVICED BY PUBLIC WATER AND SEWER. PRIOR TO INSTALLATION, COORDINATE WATER SERVICE WITH THE PORTLAND WATER DISTRICT AND THE SEWER SERVICE WITH THE CITY OF PORTLAND ENGINEERING DEPARTMENT. SERVICE EXTENSIONS SHALL MEET THE CITY OF PORTLAND WATER AND SEWER DISTRICT STANDARDS.
- ALL SEDIMENT AND EROSION CONTROL MEASURES SHALL BE INSTALLED IN ACCORDANCE WITH "MAINE EROSION AND SEDIMENT CONTROL BMP'S" MANUAL PUBLISHED BY BUREAU OF LAND AND WATER QUALITY MAINE DEPARTMENT OF ENVIRONMENTAL PROTECTION, MARCH 2003 OR LATEST EDITION. IT SHALL BE THE RESPONSIBILITY OF THE CONTRACTOR TO POSSESS A COPY OF THE EROSION CONTROL PLAN AT ALL TIMES.
- ALL SIDESLOPES STEEPER THAN 3:1 (H:V) SHALL BE LINED WITH EROSION CONTROL BLANKET OR ROCK WALL AS SHOWN ON THIS PLAN.
- INSTALL HAY BALE BARRIER AROUND ALL CATCH BASIN NOT IN PAVEMENT.
- INSTALL SILT SACS IN ALL CATCH BASINS IN PAVEMENT.
- SEE DETAIL SHEETS FOR EROSION CONTROL NOTES
- SOIL STOCKPILES SHALL NOT BE LOCATED WITHIN 100 FEET OF ANY NATURAL RESOURCES. STOCKPILES SHALL BE CONTAINED WITH A DOUBLE BOUNDARY OF FILTRATION BARRIER. SEE EROSION CONTROL NOTES.
- PIPE MATERIALS:
  - STORM DRAIN: HDPE WITH THE EXCEPTION OF:
    - SD-13 SHALL BE 14" DUCTILE IRON LINED AND COATED
    - SD-12, SD-14 & SD-15 SHALL BE 12" ADS HP STORM
  - UNDER DRAIN: PERFORATED HDPE TYPE "B"
  - SANITARY SEWER: SDR-35 HDPE
  - WATER MAIN: PER PORTLAND WATER DISTRICT STANDARDS
  - CONDUITS: SCH 40 PVC



UTILITY NOTES:

- TRENCHING AND SAND FILLING BY CONTRACTOR GAS LINE MATERIAL AND INSTALLATION BY UNITIL.
- CONTRACTOR SHALL INSTALL FIELD LOCK GASKETS ON SLIP JOINTS FROM VALVE TO BUILDING.
- INSTALL 8"x8" TAPPING SLEEVE AND 8" GATE VALVE.
- 4" DOMESTIC WITH 2" METER INSTALLED IN UTILITY ROOM.



LEGEND	
EXISTING	PROPOSED
- - - -	- - - -
- - - -	- - - -
- - - -	- - - -
- - - -	- - - -
- - - -	- - - -
- - - -	- - - -
- - - -	- - - -
- - - -	- - - -
- - - -	- - - -
- - - -	- - - -
- - - -	- - - -
- - - -	- - - -
- - - -	- - - -
- - - -	- - - -
- - - -	- - - -
- - - -	- - - -
- - - -	- - - -
- - - -	- - - -
- - - -	- - - -

DESIGNED KDG CHECKED SMF

PROJECT NO. 06172 SCALE 1" = 20'

SHEET 5 OF 12

DATE	BY	FOR	REVISION
07/24/17	D	WTC	07-24-17 CITY SUBMITTAL NO. 5
06/15/17	C	WTC	06-15-17 CITY SUBMITTAL NO. 6
04/11/17	B	WTC	04-11-17 CITY SUBMITTAL NO. 3
12/15/16	A	WTC	12-15-16 CITY SUBMITTAL NO. 1
			STATUS:

THIS PLAN SHALL NOT BE MODIFIED WITHOUT WRITTEN PERMISSION FROM SERBAGO TECHNIQS, INC. ANY ALTERATIONS, ADDITIONS OR DELETIONS SHALL BE AT THE USER'S SOLE RISK AND WITHOUT LIABILITY TO SERBAGO TECHNIQS, INC.

SEBAGO TECHNICS  
75 John H. Berry Road, Lewiston, ME 04240  
Salem, ME 04473  
Tel: 207-752-5656 Fax: 207-200-2100

WWW.SERBAGOTECHNIQS.COM  
250 Sunrise Rd.  
Lewiston, ME 04240  
Tel: 207-752-5656

UTILITY PLAN  
OF  
218-220 WASHINGTON AVENUE  
218-220 WASHINGTON AVENUE  
PORTLAND, MAINE  
FOR:  
218-220 WASHINGTON AVENUE LLC  
190 ELDERBERRY ROAD  
SOUTH PORTLAND, MAINE 04106