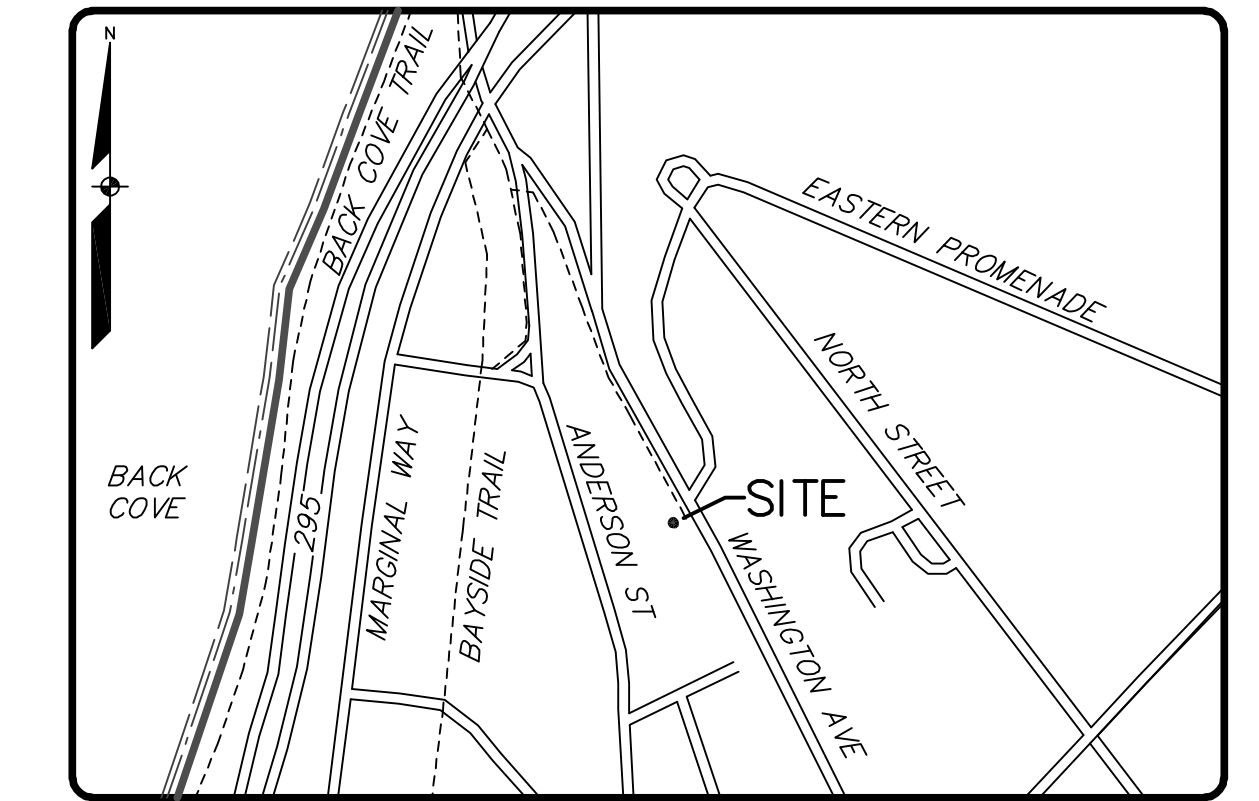


# 218-220 WASHINGTON AVENUE

218-220 WASHINGTON AVENUE  
PORTLAND, MAINE



LOCATION MAP NTS

**APPLICANT:**  
218-220 WASHINGTON AVENUE LLC  
199 ELDERBERRY ROAD  
SOUTH PORTLAND, MAINE 04106

**ENGINEER/SURVEYOR:**



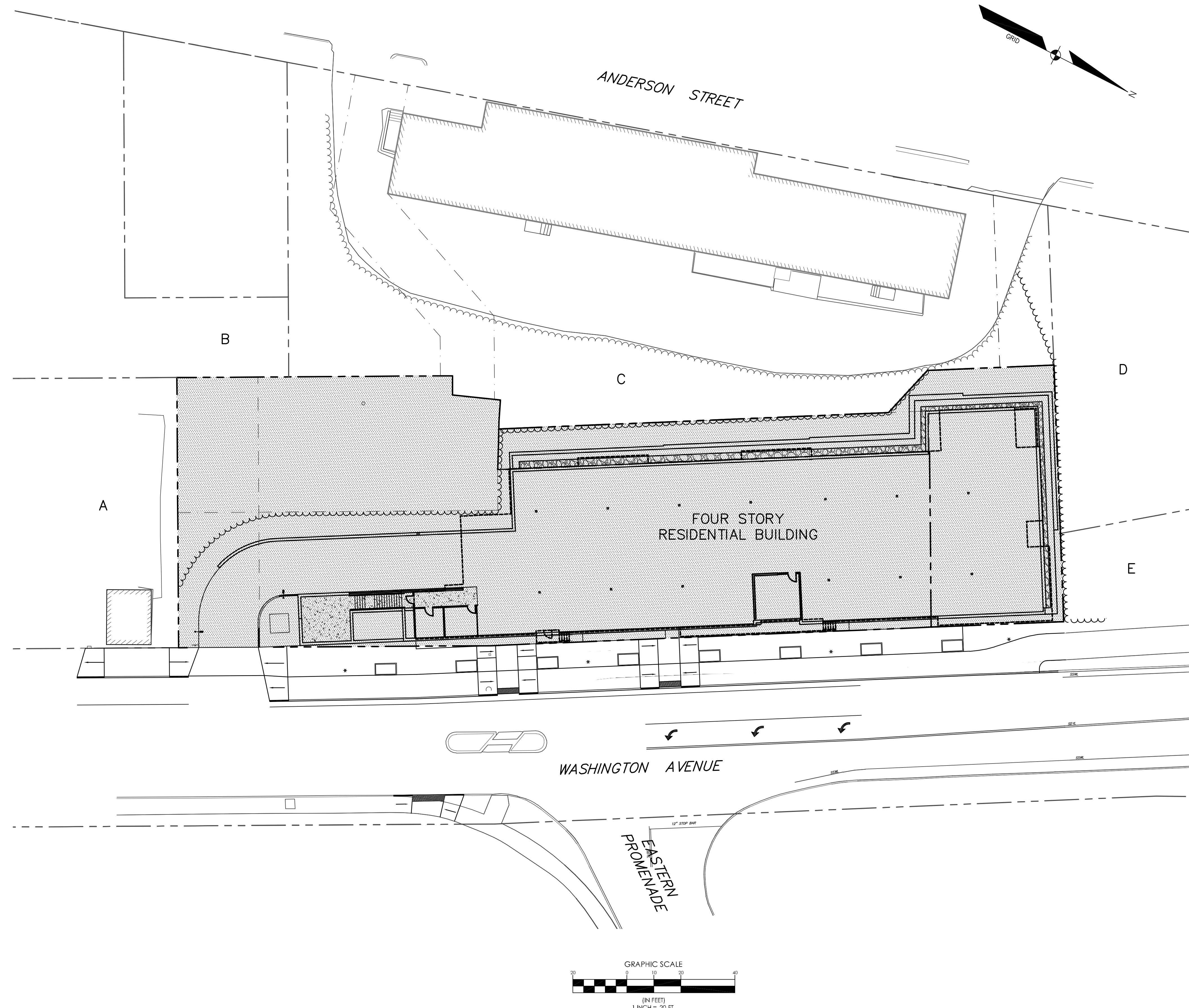
WWW.SEAGOTECHNICS.COM  
75 John Roberts Rd. Suite 1A South Portland, ME 04106 Tel. 207-200-2100  
250 Goddard Rd. Suite B Lewiston, ME 04240 Tel. 207-783-5656

**PROJECT ARCHITECT:**

ARCHETYPE ARCHITECTS  
48 UNION WHARF  
PORTLAND, MAINE

**LIST OF ABUTTERS:**

KEY	ABUTTER	BOOK/PAGE
A	202 WASHINGTON LLC	25509/156
B	203 ANDERSON LLC	21587/100 & 21587/96
C	ROCKINGHAM LLC	27757/278
D	PINE STATE ELEVATOR CO.	6106/327
E	STATE OF MAINE	-



## INDEX OF PLANS

SHEET NO.	SHEET TITLE
1	COVER SHEET
2	DEMOLITION PLAN
3	SITE PLAN LOWER LEVEL
4	SITE PLAN UPPER LEVEL
5	UTILITY PLAN
6	GRADING PLAN LOWER LEVEL
7	GRADING PLAN UPPER LEVEL
8	LANDSCAPE PLAN
9	DETAILS
10	DETAILS
11	DETAILS
12	DETAILS
1	PRE DEVELOPMENT WATERSHED PLAN
2	POST-DEVELOPMENT WATERSHED PLAN