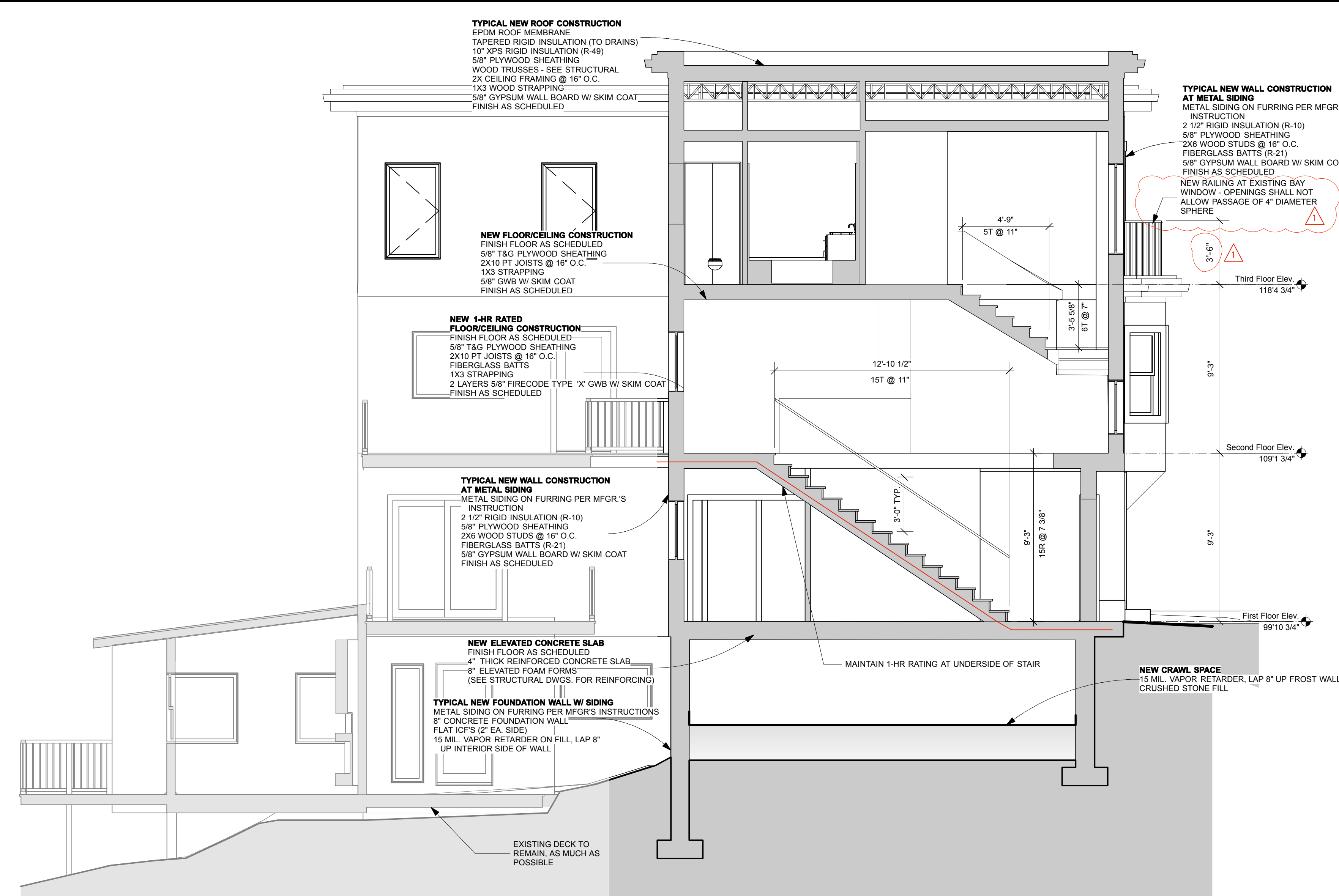


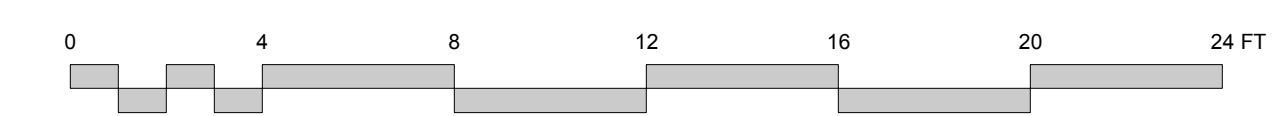
1 Building Section
Scale: 1/4" = 1'-0"



2 Building Section
Scale: 1/4" = 1'-0"



3 Building Section
Scale: 1/4" = 1'-0"



Design Firm RESIDENTIAL DESIGN STUDIO, LLC Carol A. Morrisette 174 Danforth Street Portland, Maine 04102 T 207.699.4184 C 207.671.7965	Project Title 218 Washington Avenue Portland, Maine B-1b Zone CBL 10-A-15	Sheet Status Progress Set - Not for Construction	A3.1
		Project Number 13.70	
Revisions 1 10/1/14 - BLDG REVIEW REDLINES 2 3	Sheet Title Building Sections	Drawn By CAM	Sheet No. 18
		Sheet Scale 1/4" = 1'-0" UNO	
		CAD File Number MorsePlanAv2014	