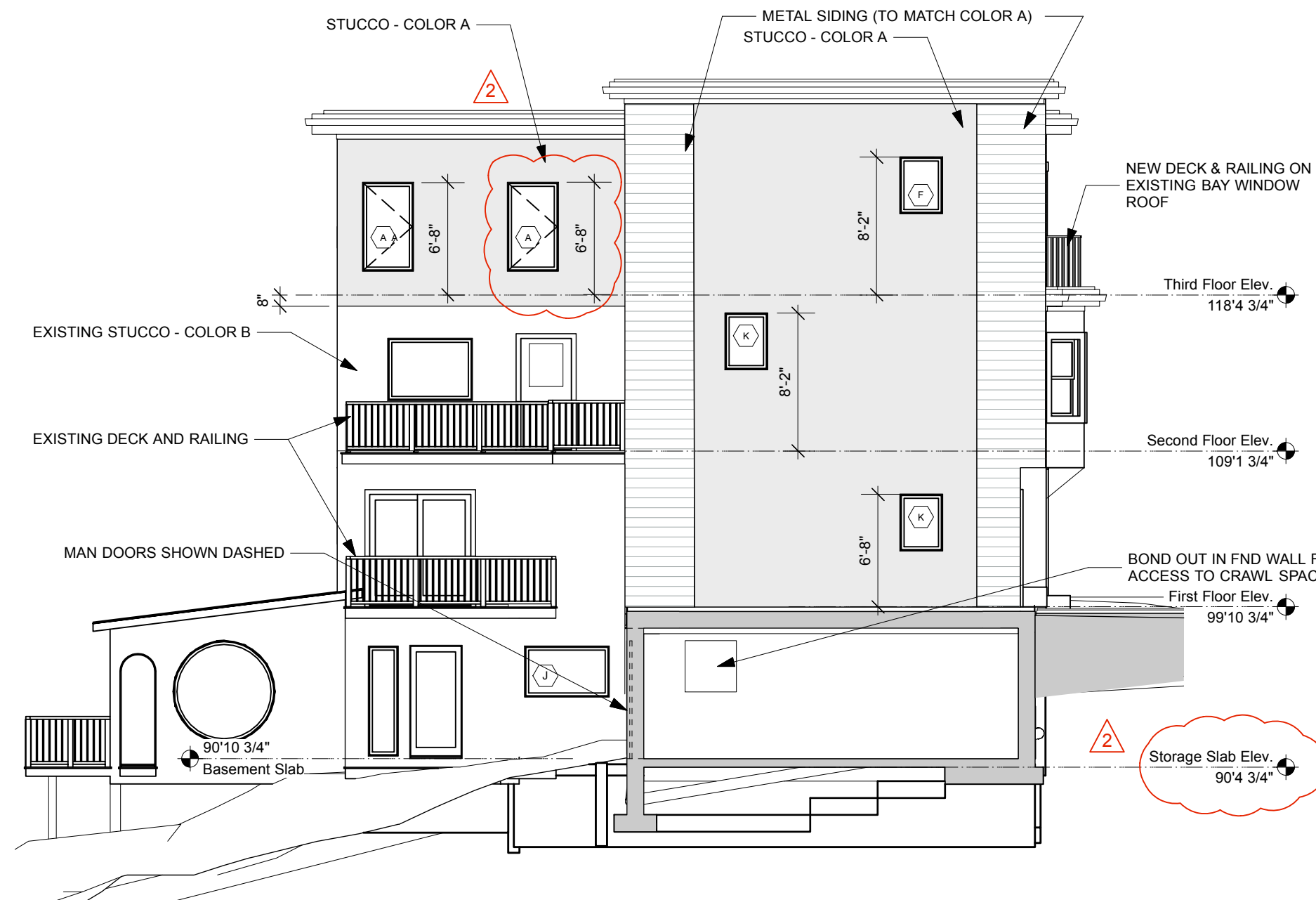
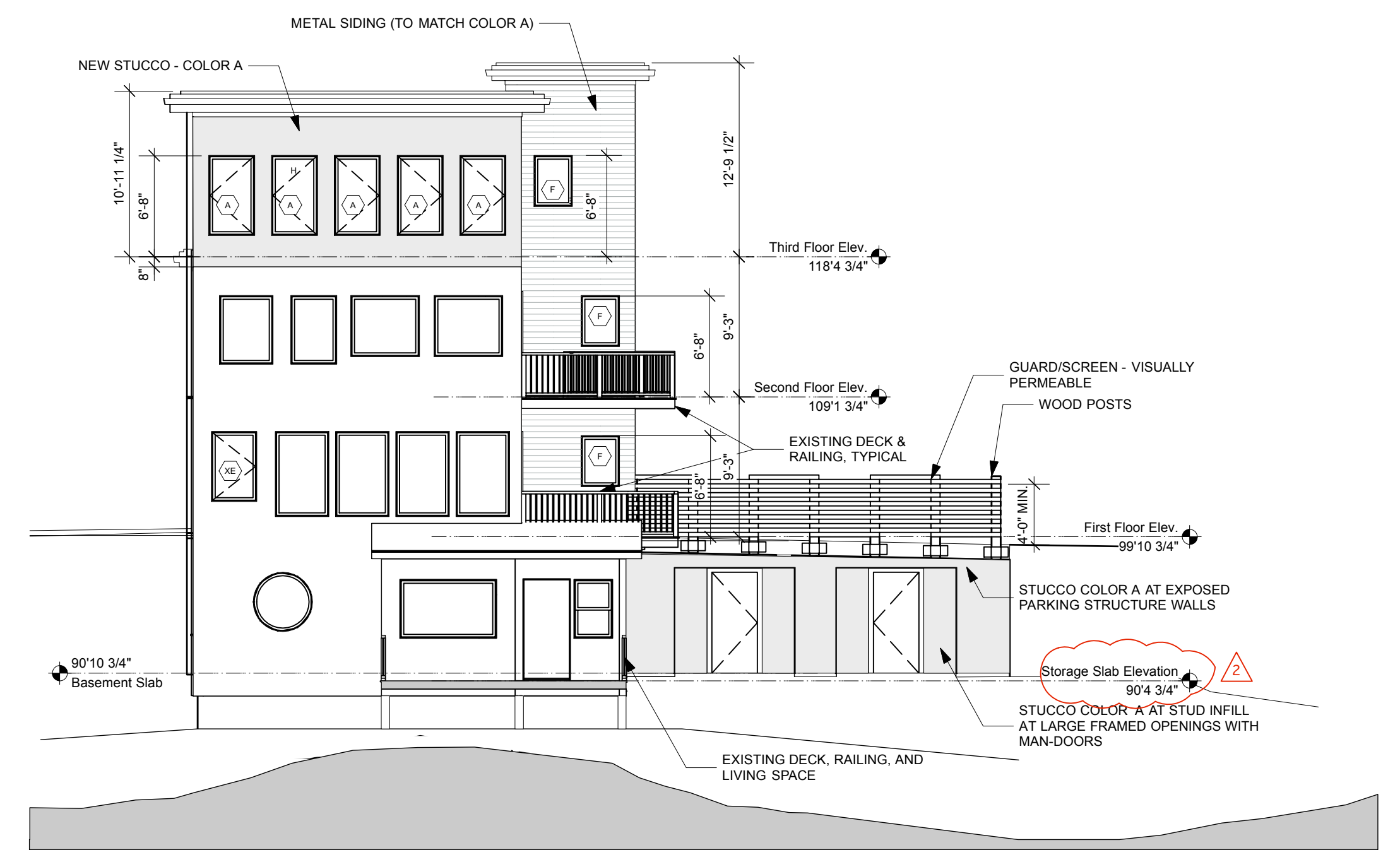


1 North Elevation (Washington Ave.)
Scale: 1/8" = 1'-0"

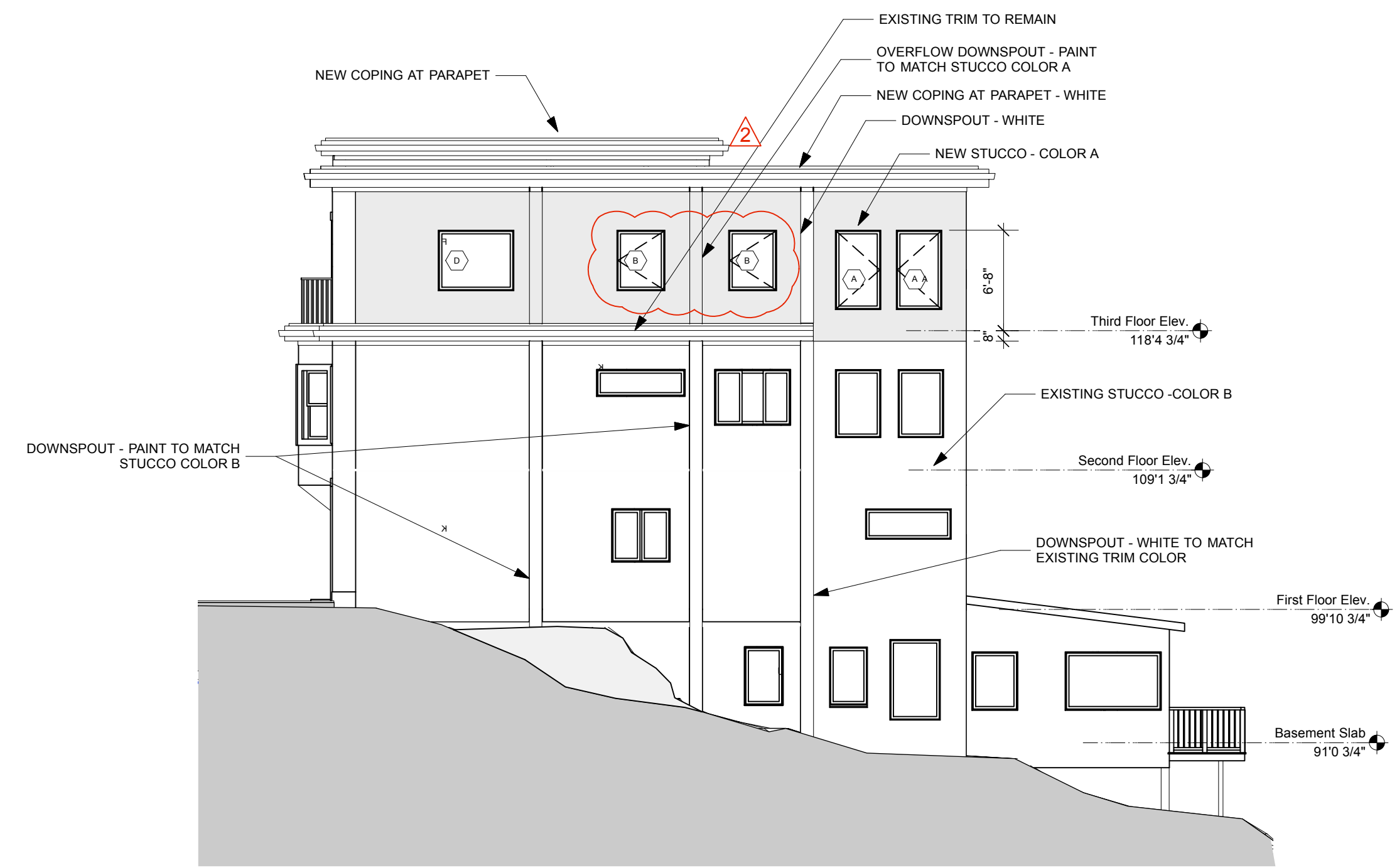


2 East Elevation
Scale: 1/8" = 1'-0"



3 South Elevation
Scale: 1/8" = 1'-0"

Window Schedule—Summarized by Mark																
Mark	Qty	Nominal Size	Class	Frame Details	Openings	Window Data										
		O.A. Width	O.A. Height	Sash Operation	Head Detail	Jamb Detail	Sill Detail	Egress Win	RO Width	RO Height	Max O Width	Max O Height	Mfr	Model No.	Accessories	Comments
A	9	30"	53"	Casement					30 1/2"	53 1/2"	34"	54"				
B	2	32"	40"	Casement					32 1/2"	40 1/2"	34"	48"				
D	1	50"	40"	Fixed Glass					50 1/2"	40 1/2"	54"	48"				
E	1	26"	50"	Fixed Glass					26 1/2"	50 1/2"	28"	54"				
F	4	26"	34"	Fixed Glass					26 1/2"	34 1/2"	28"	40"				WINDOW LOCATIONS ARE NOT WITHIN 36" HORIZONTALLY OF A STAIRWAY WALKING SURFACE WITH GLASS LESS THAN 60" AFF
G	1	26"	30"	Fixed Glass					26 1/2"	30 1/2"	28"	34"				
H	1	26"	26"	Fixed Glass					26 1/2"	26 1/2"	28"	28"				
J	1	50"	30"	Fixed Glass				FALSE	50 1/2"	30 1/2"	54"	34"				
K	2	26"	34"	Fixed Glass					26 1/2"	34 1/2"	28"	40"				PROVIDE TEMPERED GLAZING AT 1ST FLOOR LOCATION ONLY. OTHER WINDOW LOCATIONS ARE NOT WITHIN 36" HORIZONTALLY OF A STAIRWAY WALKING SURFACE WITH GLASS LESS THAN 60" AFF
XE	1	2'11 1/2"	47"	Casement				YES	30"	47 1/2"	34"	48"				EXISTING WINDOW TO REMAIN



4 West Elevation
Scale: 1/8" = 1'-0"

Door Schedule														
Mark	Qty	Nominal Size	Door Operation	Side Lights	Fire Rating	Openings	Door Data							
		Width	Height	Thickness	L Slab Wid	R Slab Wid	Frame	Door Slab	RO Width	RO Height	Mfr	Model No.	Accessories	Comments
D1_01	30"	68"	1'3 3/4"	Swing Simple					41 1/2"	68 3/4"				
D1_02	30"	68"	1'3 3/4"	Swing Simple					41 1/2"	68 3/4"				
D1_03	26"	68"	1'3 3/4"	Swing Simple					27 1/2"	68 3/4"				
D1_04	26"	68"	1'3 3/4"	Swing Simple					27 1/2"	68 3/4"				
D1_05	26"	68"	1'3 3/4"	Swing Simple					27 1/2"	68 3/4"				
D1_06	26"	68"	1'3 3/4"	Swing Simple					27 1/2"	68 3/4"				
D2_01	40"	68"	1'3 3/4"	Swing Slant					41 1/2"	68 3/4"				
D3_01	50"	68"	1'3 3/4"	Complex Swing					51 1/2"	68 3/4"				
D3_02	54"	68"	1'3 3/4"	Swing Slant					55 1/2"	68 3/4"				
D3_03	26"	68"	1'3 3/4"	Pocket Simple					27 1/2"	68 3/4"				
D3_04	26"	68"	1'3 3/4"	Swing Simple					27 1/2"	68 3/4"				
D3_05	26"	68"	1'3 3/4"	Swing Slant					27 1/2"	68 3/4"				
D3_06	26"	68"	1'3 3/4"	Pocket Simple					27 1/2"	68 3/4"				
D4_01	30"	68"	1'3 3/4"	Swing Slant					31 1/2"	68 3/4"				
D4_02	30"	68"	1'3 3/4"	Swing Simple					31 1/2"	68 3/4"				
DB_01	30"	68"	1'3 3/4"	Swing Simple					31 1/2"	68 3/4"				
DB_02	30"	68"	1'3 3/4"	Swing Simple					31 1/2"	68 3/4"				

Design Firm RESIDENTIAL DESIGN STUDIO, LLC Carol A. Morrisette 174 Danforth Street Portland, Maine 04102 T 207.699.4184 C 207.671.7965	Project Title 218 Washington Avenue Portland, Maine B-1b Zone CBL 10-A-15	Sheet Status Progress Set - Not for Construction Project Number 13.70 Date 18 JUNE 2014 Drawn By CAM Sheet No. A2.1
Revisions 1 6/18/14 - RESUBMIT SET 2 8/11/14 - REVIEW COMMENTS 3 10/8/14 - BLDG REVIEW REDLINES	Sheet Title Exterior Elevations & Schedules	Sheet Scale 1/4" = 1'-0" UNO CAD File Number MorsePlanAv2014