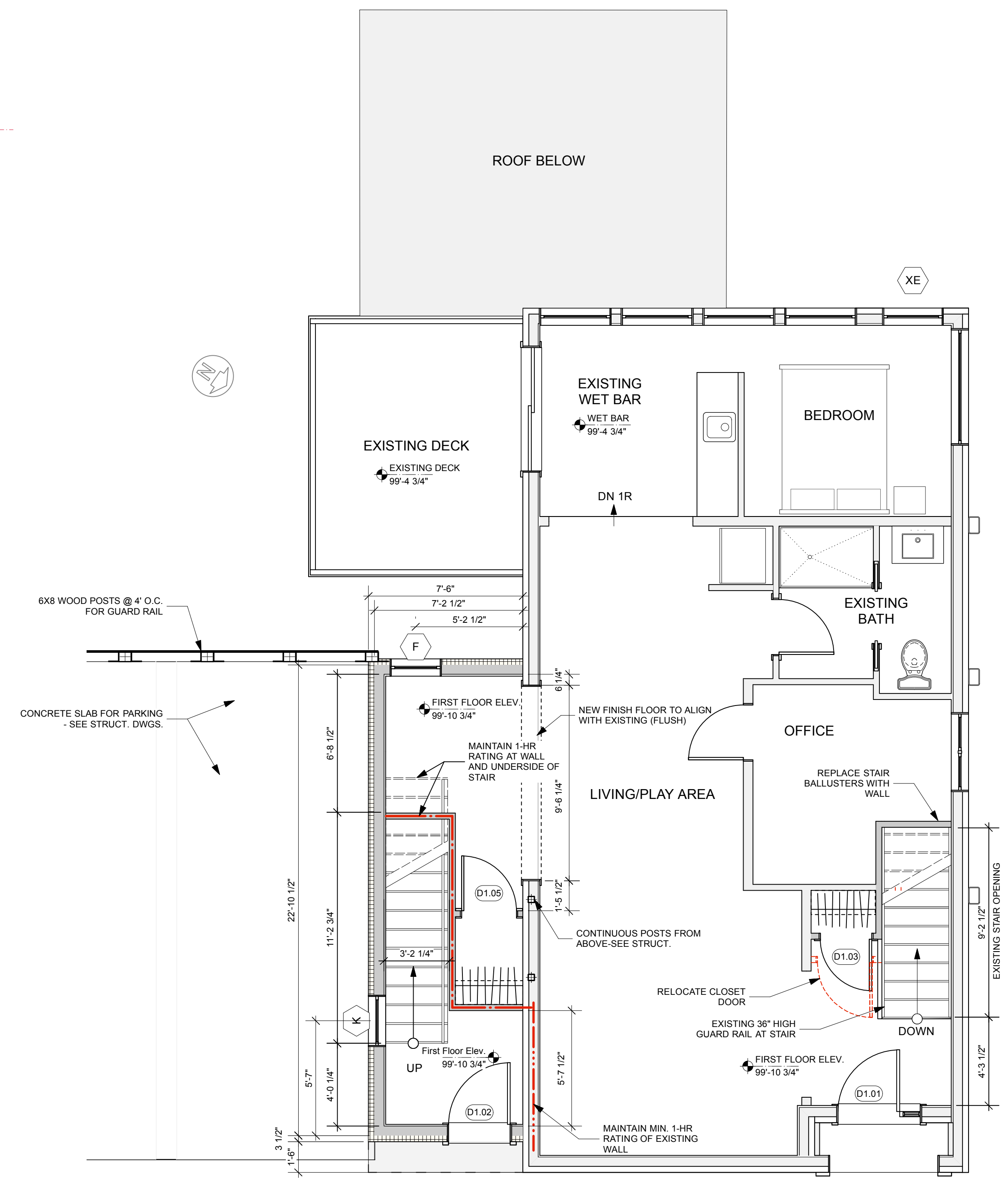


1 Basement Plan
Scale: 1/4" = 1'-0"



2 First Floor Plan
Scale: 1/4" = 1'-0"

PRELIMINARY - NOT FOR CONSTRUCTION

Design Firm RESIDENTIAL DESIGN STUDIO, LLC Carol A. Morrisette 174 Danforth Street Portland, Maine 04102 T 207.699.4184 C 207.671.7965	Project Title 218 Washington Avenue Portland, Maine B-1b Zone	Sheet Status Progress Set - Not for Construction	
		Project Number 13.70	Date 18 JUNE 2014
Revisions 1 2 3	Sheet Title Floor Plans	Drawn By CAM	Sheet No. A1.1
Sheet Scale 1/4" = 1'-0" UNO		CAD File Number MorsePlanAv2014	