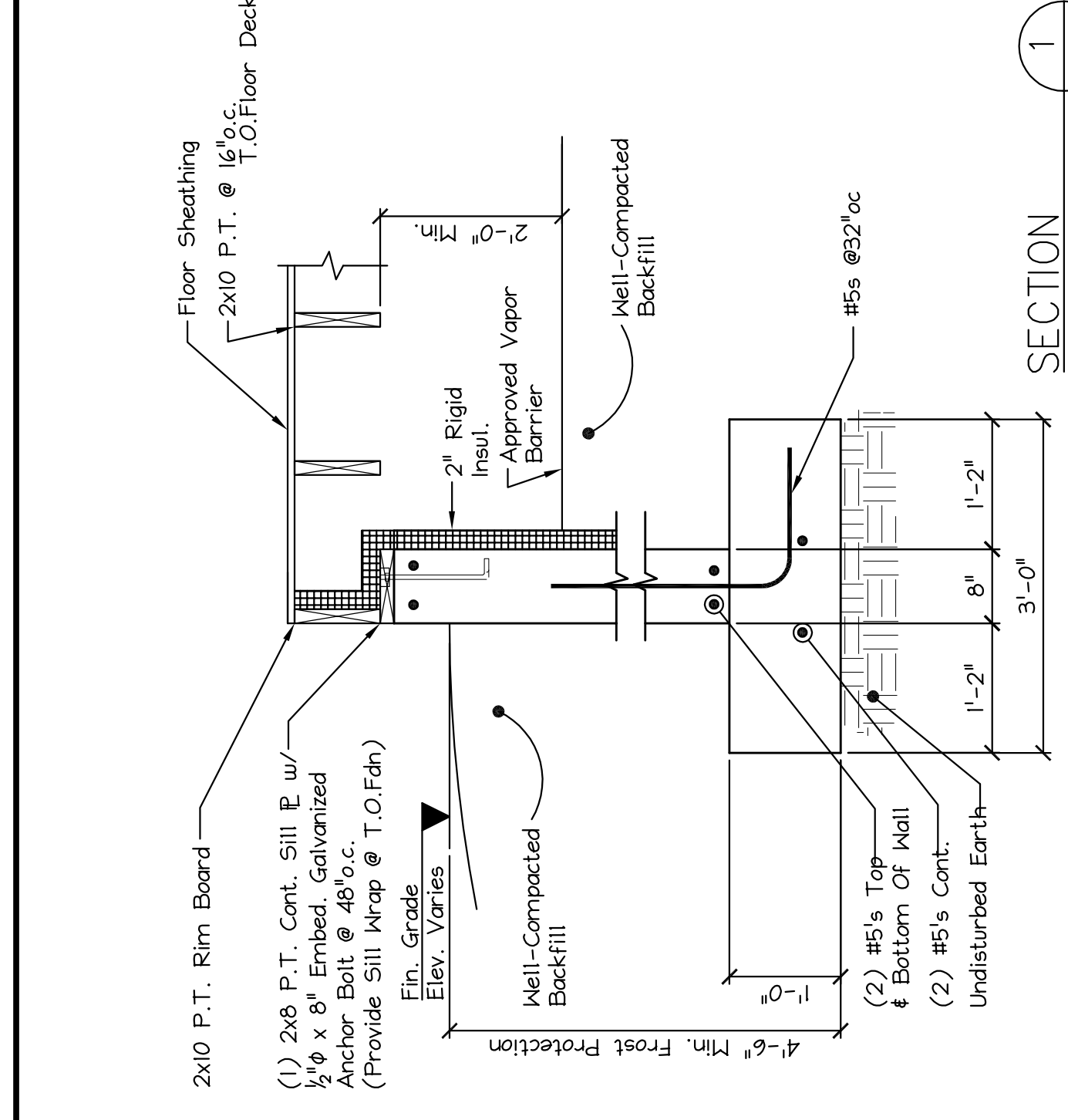
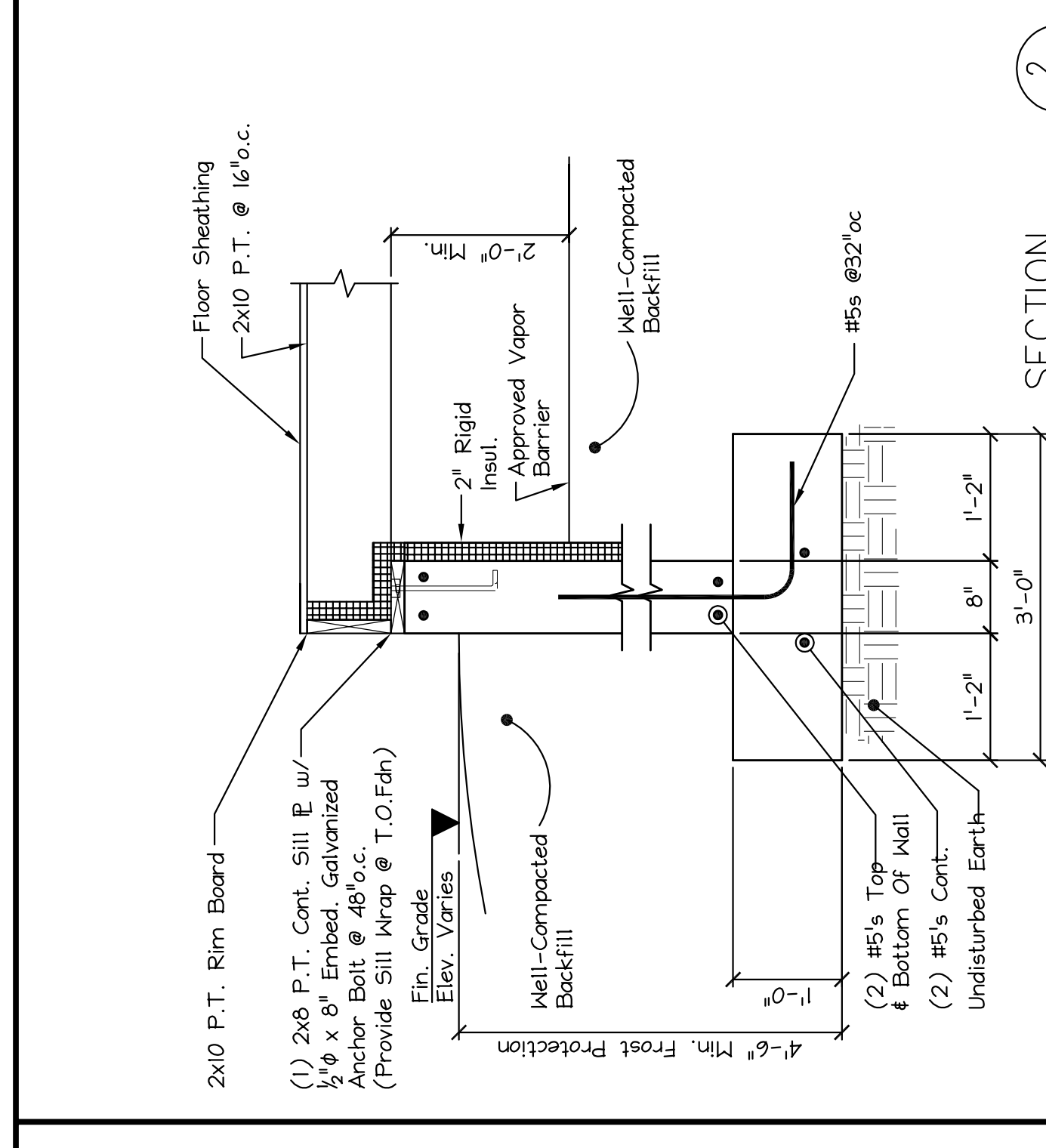


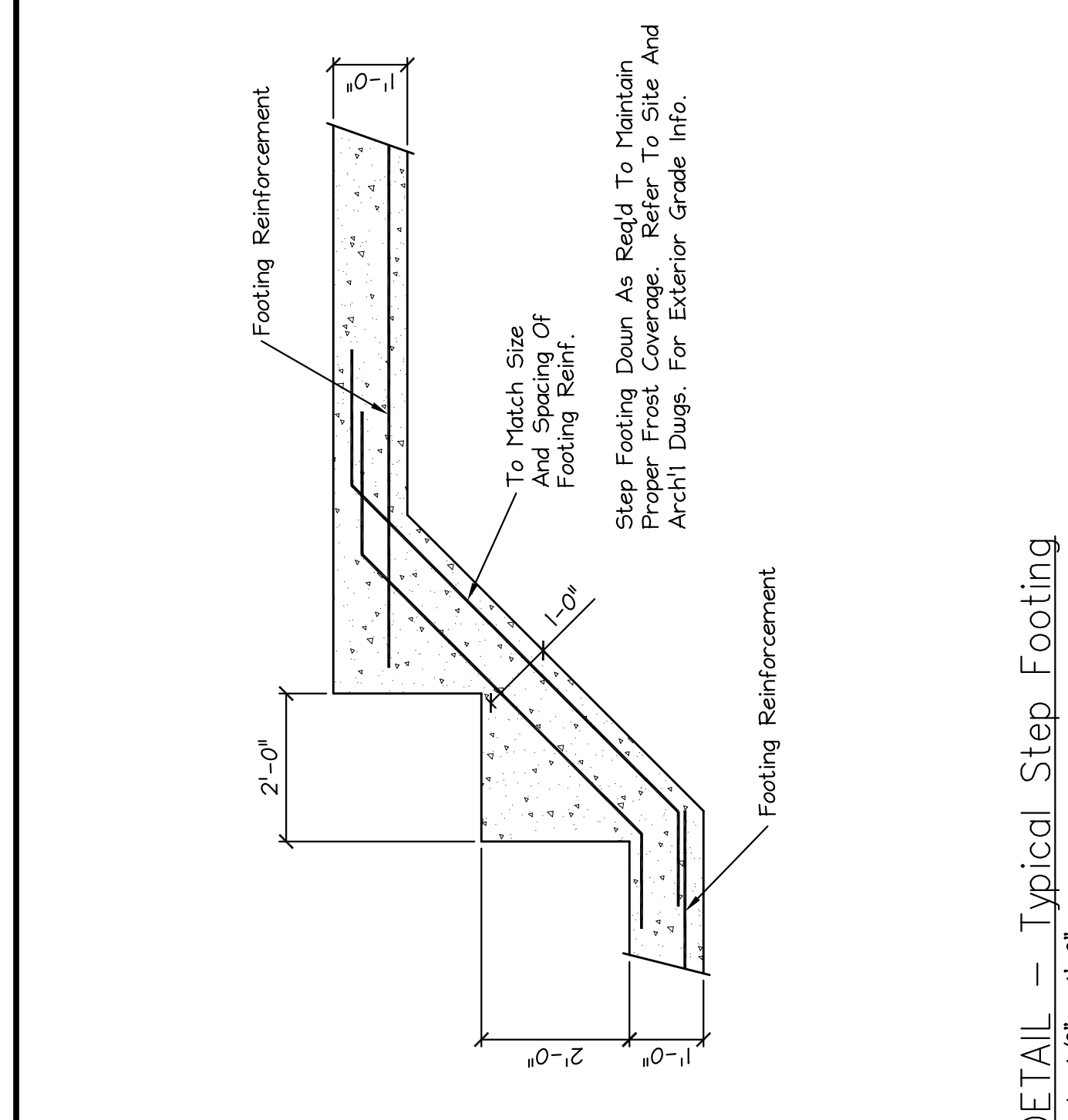
FOUNDATION PLAN  
Scale: 1/4" = 1'-0"



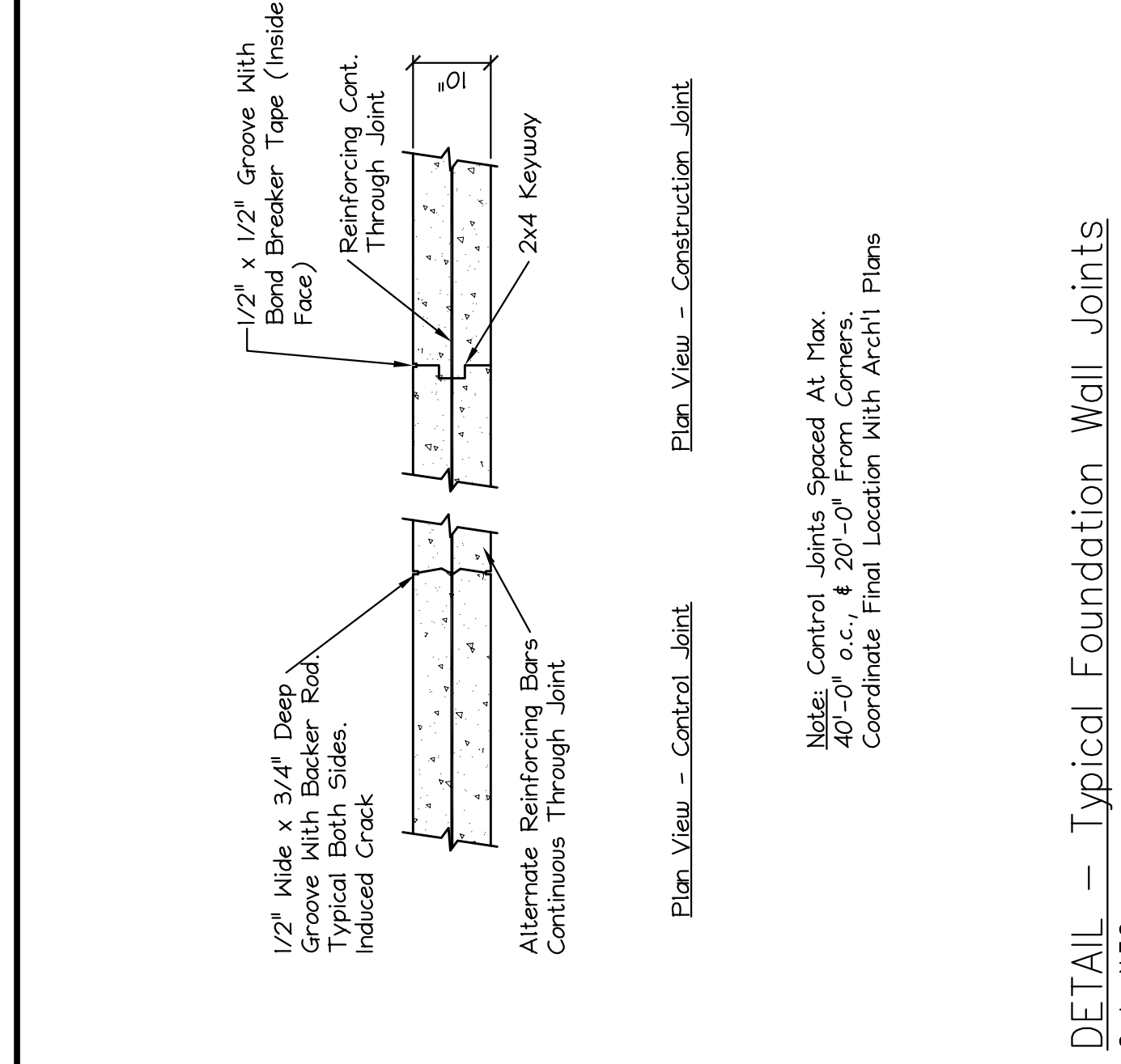
SECTION 1  
Scale: 3/4" = 1'-0"



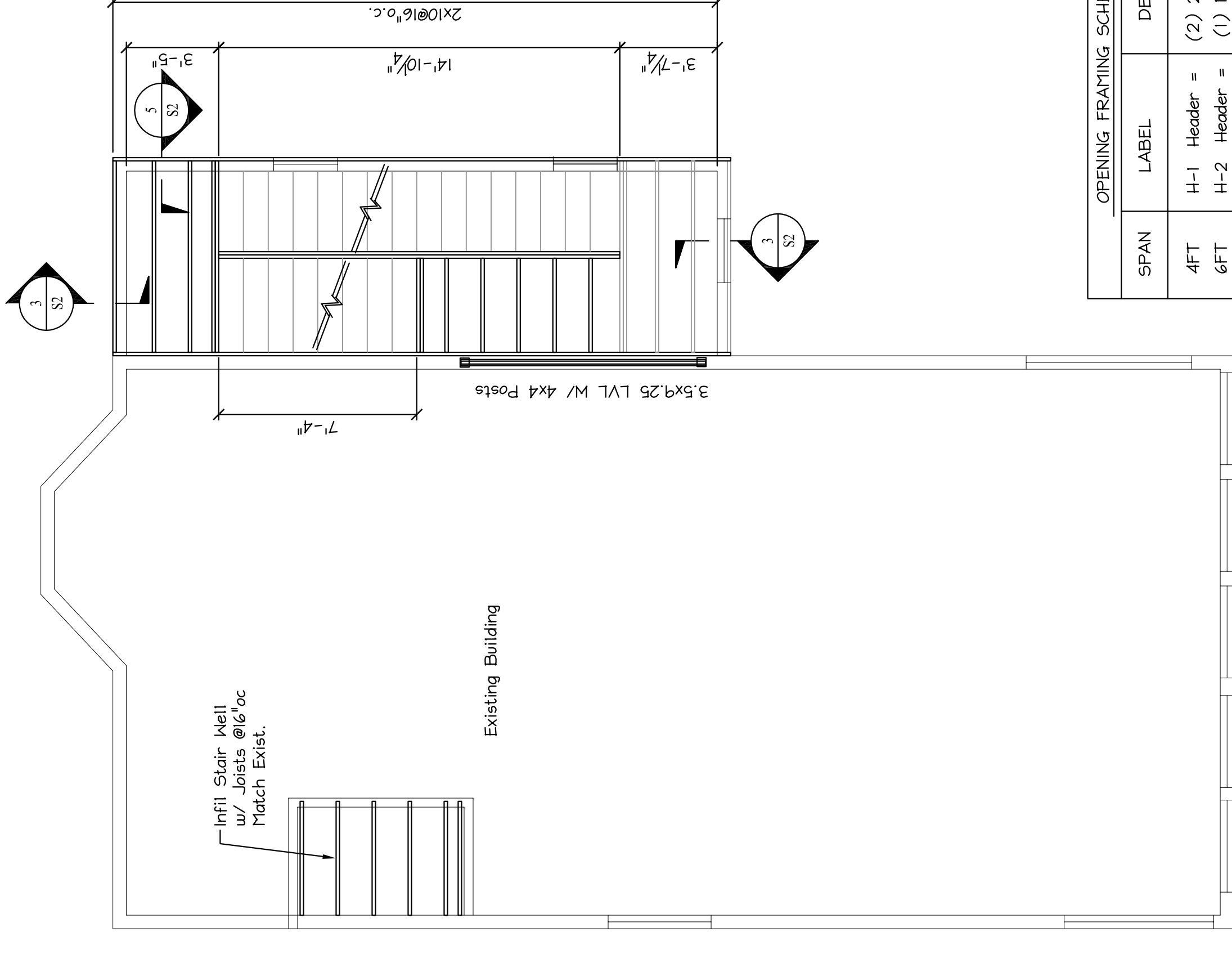
SECTION 2  
Scale: 3/4" = 1'-0"



DETAIL - Typical Step Footing  
Scale: 1/2" = 1'-0"



DETAIL - Typical Foundation Wall Joints  
Scale: N.T.S.



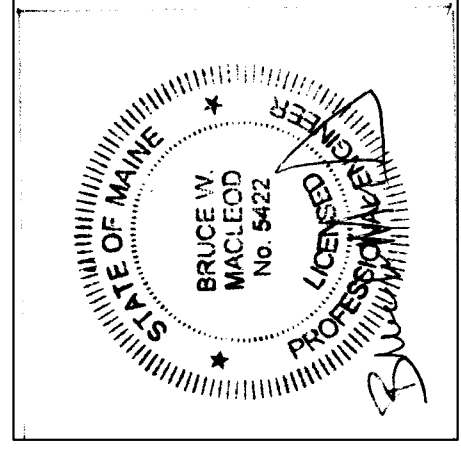
SECOND FLOOR FRAMING PLAN  
Scale: 1/4" = 1'-0"

FRAMING NOTES:  
1. See Specifications and notes on S-3  
2. Refer to Opening Framing Schedule for Headers/Jambs  
3. Refer to S-3 for Shear Wall Construction

SPAN	LABEL	DESCRIPTION
4FT	H-1 Header =	(2) 2x10s SPF or (1).75 x 9.5 LVL
6FT	H-2 Header =	(1) 1.75x11.25 LVL or (2).75 x 9.5 LVL
8FT	H-3 Header =	(2) 1.75x9.5 LVL
10FT	H-4 Header =	(2) 1.75x9.5 LVL
12FT	H-5 Header =	(2) 1.75 x 11.25 LVL
14FT	H-6 Header =	(2) 1.75 x 14 LVL

NOTE:  
PROVIDE (1) JACK STUDS EA. END FOR OPENINGS < 4FT WIDE  
PROVIDE (2) JACK STUDS EA. END FOR OPENINGS < 10FT WIDE  
PROVIDE (1) 4x6 POST EA. END FOR OPENINGS > 10FT WIDE

ISSUED 4.7.14



MACLEOD  
STRUCTURAL ENGINEERS, PA  
90 Bridge Street, Suite 202, Westbrook, Maine 04092 207.839.0880  
Renovation and Addition to  
218 Washington Ave.  
Portland, Maine

TITLE: FOUNDATION AND FRAMING PLANS  
DATE: 04/16/14 DRAWN BY: BWM  
SCALE: as noted PROJ. NO.: 2014-145  
DRAWING NUMBER: S-1