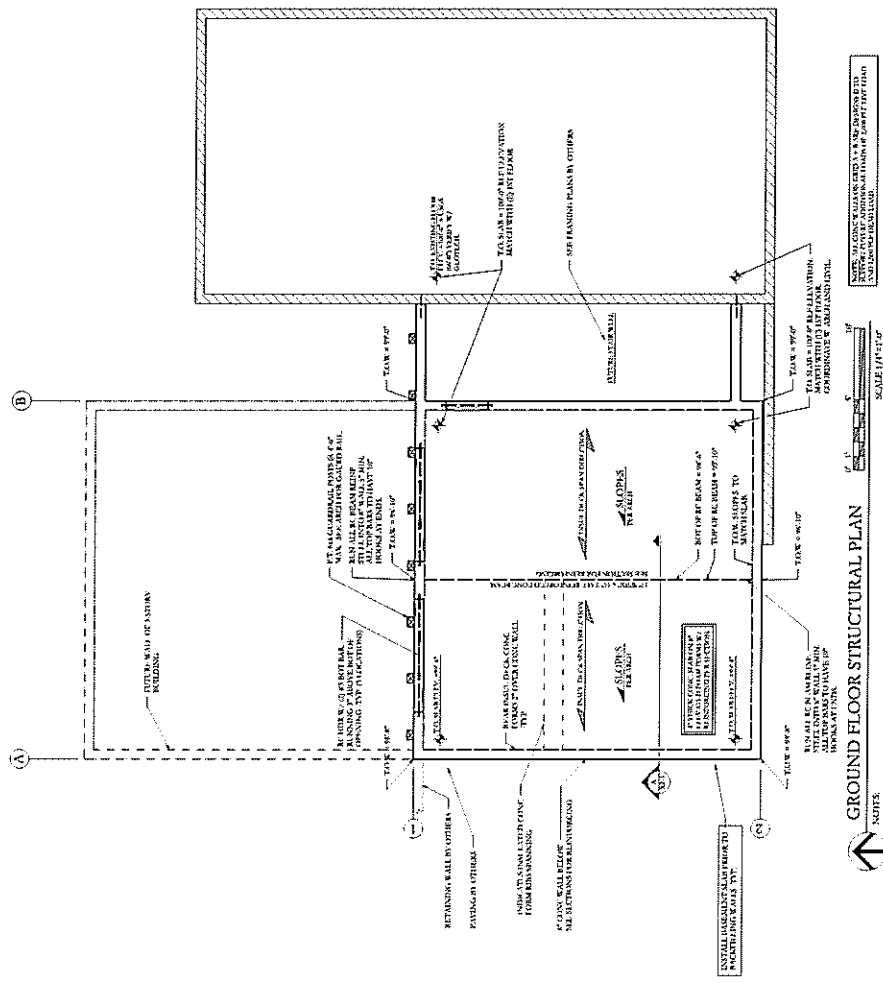


NOT FOR CONSTRUCTION
PROJECTS ONLY



NOTES:
1. ALL CONCRETE REINFORCING STEEL PER PLANS AND SPECIFICATIONS.
2. ALL CONCRETE REINFORCING STEEL IS INDICATED THIS WAY AND SHOWN.
3. ALL CONCRETE REINFORCING STEEL IS INDICATED THIS WAY AND SHOWN.
4. ALL BRACING IN G.C.

GROUND FLOOR STRUCTURAL PLAN
SCALE: 1/4"=1'-0"
NOTES:
1. ALL CONCRETE REINFORCING STEEL PER PLANS AND SPECIFICATIONS.
2. ALL CONCRETE REINFORCING STEEL IS INDICATED THIS WAY AND SHOWN.
3. ALL CONCRETE REINFORCING STEEL IS INDICATED THIS WAY AND SHOWN.
4. ALL BRACING IN G.C.